

Workforce Investment Board
Dept of Workforce Investment Large Conference Room
1880 Wardrobe Ave, Merced, CA 95341
Thursday, March 19, 2009, 3:00-5:00 p.m.
Meeting Agenda



<http://www.mercedwib.com>

-
1. Call to Order/Roll Call.....
 2. Approval of Agenda
 3. Approval of January 8, 2009 Minutes
 4. Public Opportunity to Speak
 5. Consent Agenda
 - a. Self-Sufficiency Wage Policy..... Brian Cutler
 6. Action Agenda.....
 - a. Retreat Outcomes..... Alfredo Mendoza
 - b. Economic Stimulus Sole Source Procurements Alfredo Mendoza
 - c. Recovery Act Youth Funding Levels..... Alfredo Mendoza
 - d. Recovery Act Age Groups..... Alfredo Mendoza
 7. Presentations.....
 - a. End-of-Year Report Andrea Baker
 8. Discussion
 - a. Economic Stimulus (most recent developments)..... Andrea Baker/Steve Newvine
 9. Information
 - a. State Economic Stimulus Dislocated Worker Funds Jackie Walther-Parnell
 - b. Younger Youth (YOP) Quarterly Report..... Rennise Ferrario
 - c. Out-of-School (Empower) Quarterly Report Rennise Ferrario
 - d. Mr. Ed Morrison Update..... Alfredo Mendoza
 - e. Customer Service & Satisfaction Report Joanne Presnell
 - f. Fiscal Report Jackie Walther-Parnell
 - g. Participant Report Brian Cutler
 - h. WIB Nomination Committee..... Brian Cutler
 - i. Participant Enrollment-Employment Data..... Brian Cutler
 - j. WIB Recertification..... Brian Cutler
 - k. Joint Workforce Investment/Board of Supervisors Meeting Alfredo Mendoza
 - l. Green Jobs..... Brian Cutler
 8. Director Comments (5 min)
 9. Chair Comments..... (5 min)
 10. Next Meeting – May 14, 2009
 11. Adjourn

Workforce Investment Board
Dept of Workforce Investment, Large Conference Rm
1880 W. Wardrobe Ave, Merced, CA
January 8, 2009, 3:00-5:00 p.m.
Meeting Minutes



<http://www.mercedwib.com/>

Members Present:

Bob Bittner
Peter Fluetsch
Henry Ildefonso
Rick Osorio
Loretta Schlosser
Karen Weins

Edward Dietz
Debra Glass
David Long
Alfonse Peterson
Vann (Mike) Smith

Ernie Flores
Carol Greenberg
Albert Montejano
Al Romero
Nancy Ugarte

Members Absent:

Lee Andersen
Rennise Ferrario
Joseph Lombardi
John Stewart

Andrea Baker
Darren Hughes
Steve Newvine
Mike Sullivan

Brenda Callahan-Johnson
Amalee Jayasinghe
Terry Nichols

Others Present:

Brian Cutler
Joanne Presnell

Dee Knight
Jackie Walther-Parnell

Alfredo Mendoza

-
1. Call to Order/Roll Call – The Chair, Mr. Albert Montejano, noted at 3:09 p.m. there was no quorum so the board would listen to the first presentation (item 6.a. below). After the presentation, the Chair called the meeting to order at 3:26 p.m. Roll call was taken.
 2. Approval of Agenda – It was *M/S/C Romero/Ildefonso* to approve the agenda.
 3. Approval of Minutes – It was *M/S/C Long/Ildefonso* to approve the September 18, 2008 minutes.
 4. Public Opportunity to Speak – None.
 5. Consent Agenda:
 - a. Limited Funds Policy – It was *M/S/C Osorio/Bittner* to approve the Limited Funds Policy.
 - b. Veterans Policy – It was *M/S/C Osorio/Romero* to approve the Veterans Policy.
 6. Presentations:
 - a. Services to Businesses Downsizing & Closing (Rapid Response): Ms. Joanne Presnell introduced Ms. Audra Stigman, Business Resources Team representative, who provided a graph and data regarding the downsizing, layoffs and closures for businesses in Merced County. She also gave rapid response information (Dept services provided to businesses) on the following industries in Merced County—Accommodation/Food, Construction, Education, Finance, Healthcare, Manufacturing, Retail and Social Services.

Staff was asked to provide statistics at the next meeting on the time it takes a customer to get a job, starting from layoff.

- b. Careersinthevalley.com Website: Mr. Alfredo Mendoza provided an overview of the CA Partnership for the San Joaquin Valley, and gave a presentation on the careersinthevalley website by

showing members how to access employer, training, job search and job postings information in each county and the region.

7. Information:

- a. Governor's Additional Dislocated Worker Funding:
- b. Regional Veterans Grant Proposal Update
- c. Workforce Investment Board Resignation – Mr. Garith Krause
- d. Customer Service & Satisfaction Report
- e. Fiscal Report
- f. Participation Report

8. Director Comments:

Ms. Joanne Presnell informed WIB members that Ms. Andrea Baker had fallen and broken her ankle, and would not be back to work until February. She noted Ms. Baker misses everyone, really wants to be here and wishes everyone a happy New Year. She has a laptop, and is doing some work from home.

9. Chair Comments:

The Chair noted he attended a CA Workforce Association meeting on Dec 12, 2008, in San Diego, CA. He noted Mr. David Bradley gave a presentation on the State and Federal Economic Stimulus package, which was designed not only for government infrastructure but also the private sector. Overall, the presentation was very favorable for the Workforce Investment Boards. The meeting was very informative and positive. Hopefully some of this money will come to California.

It was noted by Ms. Presnell that with President Elect Obama's Economic Stimulus package, the biggest impact on Workforce Development is additional funding for Dislocated Workers, and also a stand-alone Summer Youth Employment Program that we haven't had in many years. It looks very positive that President Elect Obama will sign this package as early as February 2009. Another positive is the nomination of Ms. Hilda Solis as the Secretary of the Dept of Labor. She is from California, and would be a great supporter of the Workforce Investment Areas because she understands the Workforce Investment system.

10. Next Meeting – March 12, 2009, Dept. of Workforce Investment, 1880 Wardrobe Ave, Merced.

11. Adjourn – Meeting was adjourned 4:13 p.m.

TO: Workforce Investment Board

DATE: 03/19/09

FROM: WIB Executive Committee

For Action

For Information

For Discussion

SUBJECT: Self-Sufficiency Wage

PROPOSED MOTION(S): Approve Changes to Self-Sufficiency Wage policy.

DISCUSSION: On 9/15/2005, in accordance with the Workforce Investment Act of 1998 (at Section 134(d)(3)(A)(ii) and the regulations (at 20CFR 663.220), the Merced County Workforce Investment Board approved the current self-sufficiency wage policy.

One of two categories of adults and dislocated workers who may receive intensive services are those who are employed, and have received at least one core service, and are determined by a One-Stop operator to be in need of intensive services to obtain or retain employment that leads to self-sufficiency.

The proposed change in this policy will exempt the five Workforce Investment Board adopted demand industry sectors from the self-sufficiency wage policy.

ATTACHMENT(S):

Self-Sufficiency Wage Policy

Self-Sufficiency Wage Calculation

Self-Sufficiency Wage

Policy: In accordance with the Workforce Investment Act of 1998 (at Section 134(d)(3)(A)(ii)) and the regulations (at 20CFR 663.220), the Merced County Workforce Investment Board has approved the following policy:

- The self-sufficiency wage for adults is based on a formula from the California Budget Project that allows for family size, cost of living in the Merced area to include housing and utilities, food, transportation, childcare and healthcare to be considered.
- The self-sufficiency wage for dislocated workers is at 85% of the individual's dislocation (layoff) wage but in no event less than the adult self-sufficiency wage.
- The self-sufficiency wage will be based on full-time employment, which is an individual working 40 hours/week, 52 weeks/year of work.
- Direct that self-sufficiency wage(s) shall be reassessed at least once per year.
- Candidates for training programs in the WIB-adopted industry sectors are exempt from this policy. Applicants who are employed within the WIB-adopted industry sectors, and are seeking upgrade services and/or other employment within their sectors will be exempt from this policy. WIB adopted industry sectors are as follows:
 - Agribusiness, including Food Processing, Agricultural Technology, and Biotechnology
 - Manufacturing
 - Supply Chain Management and Logistics
 - Health and Medical Care
 - Renewable Energy

Responsible Official: Special Projects Manager

Reviewed Date: February 10, 2009

Revised Date: February 10, 2009

Self - Sufficiency Wage Calculation

The self-sufficiency wage takes into account the following expense categories according to single adult and parent situations and computes the basic family wage (self sufficiency wage):

Self Sufficiency Wage Calculator				
Basic Family Wage Calculation For Merced County Residents				
Based on California Budget Project Methodology				
Expense Categories	Category Codes			
	Single Adult	Single Parent	Two Parent Family	Two Working Parent Family
	A	B	C	D
Housing & Utilities	\$ 546.00	\$ 722.00	\$ 722.00	\$ 722.00
Food	211.00	507.00	731.00	731.00
Transportation	407.00	407.00	407.00	736.00
Child Care	-	912.00	-	912.00
Health Care	287.00	739.00	993.00	993.00
Miscellaneous	206.00	437.00	506.00	506.00
Taxes	361.00	416.00	345.00	618.00
Total (monthly)	\$ 2,018.00	\$ 4,140.00	\$ 3,704.00	\$ 5,218.00
Total (26 weeks)	\$ 12,108.00	\$ 24,840.00	\$ 22,224.00	\$ 31,308.00
Total (52 weeks)	\$ 24,216.00	\$ 49,680.00	\$ 44,448.00	\$ 62,616.00
Basic Family Wage*	\$ 11.64	\$ 23.88	\$ 21.37	\$ 30.10

TO: Workforce Investment Board

DATE: 03/19/09

FROM: WIB Staff

For Action

For Information

For Discussion

SUBJECT: Retreat Outcomes

PROPOSED MOTION(S): That the Workforce Investment Board prioritize the retreat outcomes.

DISCUSSION: On November 13, 2008, the Workforce Investment Board (WIB) held a retreat and discussed strengths, weaknesses, opportunities and trends of the local area. The retreat also covered specific initiatives and projects that the WIB will be involved in for the next 1-2 years. The following list will be placed on a flip chart and members shall be provided with dots to prioritize the outcomes listed below:

- **INFLUENCE WORKFORCE LEGISLATION AND REGULATIONS**
- **IMPROVE ONE-STOP EFFECTIVENESS AND QUALITY**
- **BOARD DEVELOPMENT STRATEGIES, PUBLIC AWARENESS AND OUTCOMES**
- **FACILITATING RESOURCES AND NETWORKS TO HELP BUSINESS SUCCEED**
- **CAPACITY IN WIB SYSTEM TO GATHER BUSINESS DATA**
- **COMPREHENSIVE PROGRAMS FOR EMPLOYMENT AND LIFE SKILLS FOR YOUTH AND ADULT**
- **CONTINUED REGIONAL WORK.**

During the meeting, each member shall be provided two dots and be asked to place them next to the items listed above that are most important to the WIB.

ATTACHMENT(S): N/A

TO: Workforce Investment Board

DATE: 03/19/09

FROM: WIB Staff

For Action

For Information

For Discussion

SUBJECT: Economic Stimulus Sole Source Procurements

PROPOSED MOTION(S): That the Workforce Investment Board (WIB) recommends to the Board of Supervisors that they approve sole source procurements for Adult, Dislocated Worker and Youth funds stemming from the American Recovery and Reinvestment Act of 2009 (The Recovery Act) for training, service providers and summer youth activities.

DISCUSSION: On February 17, 2009, the President signed the American Recovery and Reinvestment Act into law. Among numerous other programs, this Act provides funding for employment and training activities to Workforce Investment Act eligible Adult, Dislocated Worker and Youth participants.

The message from the Employment and Training Administration (ETA) is clear: "States are expected to spend Recovery Act funding quickly and effectively". This message requires local areas to explore the use of expedited procurement processes under current State and local law. The current local law allows for noncompetitive negotiation (sole source) in the event that 1) the award of a contract is infeasible under small purchase procedures; and 2) the public exigency or emergency need for the item or service does not permit a delay resulting from competitive solicitation.

The following actions have been taken to justify the sole source recommendation:

- A competitive solicitation process (RFP) has been examined. The timeline provided by the Department of Administrative Services for an expedited RFP process does not meet the timelines this funding requires.
- The RFP 6300 (current RFP for youth programs) and selected answer to the RFP was examined by staff and County Counsel to justify a stand-alone youth program by the current youth provider. The results of the examination provided no clear connection for a stand-alone summer youth component by the current youth provider.

In order to meet the goals of the President's Recovery Act, and in order to successfully begin spending, a sole source procurement is recommended for selected youth activities (14-17 year-old youth), training and service providers for youth, adult and dislocated workers.

ATTACHMENT(S): N/A

TO: Workforce Investment Board

DATE: 3/19/09

FROM: Youth Council (Workgroup)

For Action

For Information

For Discussion

SUBJECT: American Recovery and Reinvestment Act (ARRA) Youth Funding Levels for PY 08/09 – 10/11

PROPOSED MOTION(S): The Youth Council workgroup recommend to the Workforce Investment Board that youth funding from the American Reinvestment and Recovery Act of 2009 be divided as follows: at least 75% and up to 100% spent in PY 08/09, with remaining funds spent in PY 09/10.

DISCUSSION: On March 10, 2009, the Youth Council workgroup reached consensus that most of the Youth Funding from the ARRA be spent in PY 08/09. The workgroup also recommended that staff utilize the most expeditious method possible for procurement. These actions will fulfill the Employment and Training Administration's (ETA) expectation to use a significant portion of these funds in PY 08/09.

On February 17, 2009, the American Recovery and Reinvestment Act was signed into law. States are expected to spend Recovery Act funding quickly and effectively, with the majority of these funds utilized within the first year of availability. The recommendation for funding in the proposed motion is due to Senate enacting language as well as recommendations by the ETA to provide as many youth as possible with summer employment opportunities.

ATTACHMENT(S): N/A

TO: Workforce Investment Board

DATE: 3/19/09

FROM: Youth Council (Workgroup)

For Action

For Information

For Discussion

SUBJECT: American Reinvestment and Recovery Act (ARRA) – Age Groups

PROPOSED MOTION(S): The Youth Council workgroup recommend to the Workforce Investment Board (WIB) that staff negotiate youth funding from the ARRA to augment current WIA Youth Contract Programs (PY 08/09), to include increasing the number of summer youth employment for year-round youth throughout PY 08/09, and funding be divided between 14-17, 18-21, and 22-24 year old youth for stand-alone summer youth components.

DISCUSSION: The Youth Council workgroup met on March 10, 2009, with consensus from the group being the ARRA funding be provided by negotiating with current WIA youth contract programs to increase the number of year-round participants to begin with summer youth employment activities. The funding shall be provided according to need and capacity, and will include the most expeditious manner possible to ensure that up to 100% of funding is spent in PY 2008/09 among the three age groups.

This summer, with the ARRA funding, the WIB is allowed to provide stand-alone summer youth employment components. The recommendation for funding in the proposed motion is due to Senate enacting language as well as recommendations by the Employment Training Administration to “use a significant portion of these funds to operate expanded summer youth employment opportunities”. The focus for the funds shall:

- **Require separate funding and participant tracking;**
- **Include foster youth;**
- **Include TANF family youth; and**
- **Serve youth throughout the County.**

The length of these funds shall be from February 17, 2009 through June 30, 2011.

ATTACHMENT(S): N/A

TO: Workforce Investment Board

DATE: 03/19/09

FROM: WIB Staff

For Action

For Information

For Discussion

SUBJECT: Economic Stimulus Update

PROPOSED MOTION(S): For information only.

DISCUSSION: The Department of Labor has issued Training and Employment Notice (TEN) 30-08 and Training and Employment Guidance Letter (TEGL) 13-18. There should be an additional TEGL issued prior to the date of this Workforce Investment Board meeting. The documents provide a general overview, implementation strategy, and allotments for training and employment services for the American Recovery and Reinvestment Act of 2009. The State of California allotment is \$488,646,876.00.

During the week of March 9, 2009, Ms. Andrea Baker and Mr. Steve Newvine attended a forum for the National Association of Workforce Boards in Washington DC. They will share what they learned at the forum along with some insights, and open the topic for discussion.

ATTACHMENT(S):

Will be provided at the WIB meeting

TO: Workforce Investment Board

DATE: 03/19/09

FROM: WIB Staff

For Action

For Information

For Discussion

SUBJECT: Additional Workforce Investment Act (WIA) Funds

PROPOSED MOTION(S): None. Information Only.

DISCUSSION: On December 19, 2008, Governor Schwarzenegger authorized a third round of economic stimulus grants totaling \$5.4 million in WIA Funds for 25 regions of California. Merced County's share of these funds is \$233,160. The funds are specifically for Dislocated Worker training, education and placement assistance, and Rapid Response activities. These funds are now available for use.

Staff will be at the meeting to answer questions.

ATTACHMENT(S): None

To: **Alfredo Mendoza:** Department of Workforce Investment
From: **Rebecca Lincoln:** Merced County Office of Education
Re: **Merced County Youth Council Quarterly Report-** Younger Youth Program
Date: **February 2009:** (October- November and December 2008)

A. Overall status of the program:

There are presently 130 active participants in the Youth Opportunity Program at the end of the second quarter. There were twenty-five (25) new enrollments and three (3) exits; resulting in 100% basic skills, work readiness, and/or occupational goals attained and 67 % (2/3) of the participants exited with employment, post-secondary education, in the military &/or advance training.

B. Past quarter highlights:

1) Career Industry Day Events in 2008-2009: These ROP sponsored events provide youth with detailed information and exploration of specific career pathways. Career Industry Days include tours of local businesses, guest speaker presentations, and hands-on activities related to various careers within a pathway. Career Industry Days are held from 8:30 am to 2:00 pm at the Merced County Fair Grounds in the Exhibit Building. The YOP mentors are encouraged to invite those participants whose career goals or technical training aligned with these pathways. The following two career days were offered to our participants in this past quarter:

- a) Careers in Business, Marketing and Computer Information Systems, October 23, 2008
- b) Careers in Arts and Communications, on Thursday, November 20, 2008.

2) The Opportunity Club is an ongoing activity that provides monthly sessions on current jobs, educational, community, and leadership opportunities, as well as information regarding life skills for EMPOWER and YOP youth in Merced County. All YOP and EMPOWER participants are encouraged to attend these meetings.

On October 29th, thirty-two (32) YOP and EMPOWER participants attended a presentation called “Inside Merced Gangs” presented by Mr. Sam Rangel, co-founder of “Distinguish Outreach Services, a national speaker and educator on early warnings signs of gang involvement . Mr. Rangel shared his own life experiences and provided updated statistics on gangs in Merced.

3. **YOP/EMPOWER Winter Potluck** was held on December 10, 2008, thirty-three (33) YOP and EMPOWER participants took part in a nationwide fundraising for ‘Make a Wish Foundation’ by writing letters to Santa. Macy’s Inc promised to donate \$1 to the ‘Make a Wish Foundation’ for each letter received. Letters were delivered to Macy’s by a CAE coordinator. Overall, YOP/EMPOWER wrote 36 letters to Santa, raising \$36 dollars towards the foundation!



C. Past quarter deficiencies: none

D. Past quarter recruiting/marketing efforts:

YOP new enrollments were limited the past two program years, due to the number of exits. The referral and recruitment process was reactivated in October at the following school sites: Merced Union High School District Schools; Le Grand High School, Delhi High School, Dos Palos High School, Los Banos High School and Valley Community School at the Merced, Los Banos and Atwater school sites.

YOP orientations were conducted in the months of October, November and December 2008. The YOP Mentors will continue enrolling new participants in January after the students return from the Christmas break. .

E. Next quarter challenges:

F. Technical assistance needed:

To: **Alfredo Mendoza:** Staff Services Analyst, Department of Workforce Investment
From: **Rebecca Lincoln:** Career Educator, Merced County Office of Education
Re: **Merced County Youth Council Quarterly Report-** Empower Program
Date: **February 2009** (October, November and December 2008)

A. Overall status of the program:

There are presently 116 active participants in EMPOWER at the end of the second quarter; this past quarter the program had eleven (11) new enrollments and five(5) exits. The Empower advisors continue to track the number of participants enrolled in structured program activities to ensure that the majority of youth are receiving intensive services, as opposed to case management services. The status on WIA-Client action reports for goals, activities, exits and follow-ups (phase II) remain up to date.

B. Past Quarter Highlights:

- 1) **EMPOWER Workshops:** The EMPOWER Workshops were provided to youth in the month of November this quarter. The following is an accounting of workshops offered and numbers attended:
 - a) **EMPOWER Orientation:** Conducted on Friday November 7th had an attendance of sixteen youth;
 - b) **EMPOWER Workshop I:** ‘*Gettin’ Ready for the Job*’ conducted on Friday, November 14th had seventeen (17) youth in attendance;
 - c) **EMPOWER Workshop II:** ‘*The Real Game California*’ was conducted on November 17th, 19th & 21st had an average attendance of fifteen (15) participants per session;
 - d) **EMPOWER Workshop III:** ‘*Gettin’ a Job*’ was conducted on December 1st, 3rd & 4th had an average of fifteen (15) participants per session

- 2) **Bldg K-Computer Lab:** EMPOWER participants use the computer lab daily to work on résumés, portfolios, and conduct job search. *PLATO* is educational software designed to increase math and reading skills, it is also available to the participants in the computer lab. Sign-in sheets are used to track the number of participants using the computer lab daily.

- 3) **The Opportunity Club** is an ongoing activity that provides monthly sessions on current jobs, educational, community, and leadership opportunities, as well as information regarding life skills for EMPOWER and YOP youth in Merced County. All YOP and EMPOWER participants are encouraged to attend these meetings.

On October 29th, thirty-two (32) YOP and EMPOWER participants attended a presentation called “Inside Merced Gangs” presented by Mr. Sam Rangel, co-founder of “Distinguish Outreach Services,

a national speaker and educator on early warnings signs of gang involvement . Mr. Rangel shared his own life experiences and provided updated statistics on gangs in Merced.

- 4) **Golden Valley High School** – On Wed Oct 15th, EMPOWER staff were asked to provide an overview to over 200 Golden Valley High School seniors on employability preparation for entering the workforce after graduation. The presentation included resume writing tips, proper completion of a job application, interviewing skills, job placement, job retention strategies, and labor market information. Staff also had the opportunity to provide a short promotion on the EMPOWER program.

5) EMPOWER Success Story:



Yuliana Centeno-Terrones enrolled into the EMPOWER Program on June 7th, 2006. When Yuliana started the program, she had many challenges that prevented her from moving forward with her educational goals to become a Medical Assistant. With support from her family and the EMPOWER program, Yuliana completed her class hours and externship in November, 2007. The very next month, she was hired by Dr. Joe Pediatrics in Los Banos as a Medical Assistant full time.

In a recent follow-up visit, Yuliana stated that she is very busy balancing her full time job, raising her two young boys but loves every minute. She has decided that she wants to continue her education to become a Phlebotomist.

C. Past Quarter Deficiencies: none

D. Past Quarter recruiting and marketing efforts:

Marketing and recruiting efforts for EMPOWER are on-going. In the past quarter, staff conducted presentations to The Merced Adult School, Golden Valley High School; Human Services Agency and to Yosemite High School, Independent Studies and Valley Community High School Counselors.

E. Next quarter challenges:

F. Technical assistance needed:

G. Number of clients receiving social services and examples of services received.

Numerous referrals have been made to agencies to assist with food, clothing, housing and transportation.

TO: Workforce Investment Board

DATE: 03/19/09

FROM: WIB Staff

For Action

For Information

For Discussion

SUBJECT: Mr. Ed Morrison Update

PROPOSED MOTION(S): For information only.

DISCUSSION: A presentation on Open Source Economic Development by Mr. Ed Morrison has been postponed. Mr. Morrison mentioned personal reasons for not being able to present the information on April 6, 2009.

Staff will follow up with Mr. Morrison to find out additional dates of availability.

ATTACHMENT(S): N/A

Worknet Customer Service & Satisfaction Report For All Locations January 2009

Merced County Department of Workforce Investment

Daily Sign-ins

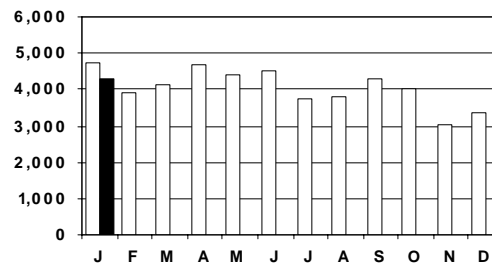
Daily sign-ins for January totaled 4,318, up 939 from the previous month and down 398 from January 2008. Daily sign-ins for the month of January are below the 6 year average.

January's 6 year average: 4,526

2008 annual average: 4,058

**Daily Sign-ins
2008 & 2009**

□ Daily Sign-ins(2008)
■ Daily Sign-ins(2009)



Return Visits

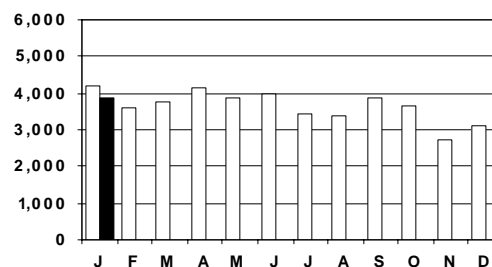
Return visits for January totaled 3,856, up 771 from the previous month and down 363 from January 2008. Return visits for the month of January are below the 6 year average.

January's 6 year average: 4,118

2008 annual average: 3,647

**Returning Visitors
2008 & 2009**

□ Returning Visitors(2008)
■ Returning Visitors(2009)



First Visits

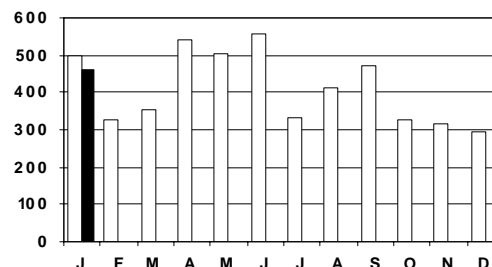
First Visits for January totaled 462, up 168 from the previous month and down 35 from January 2008. First Visits for the month of January are above the 6 year average.

January's 6 year average: 408

2008 annual average: 411

**First Visits
2008 & 2009**

□ First Visits(2008)
■ First Visits(2009)



Contents

<i>How did you hear about us?</i>	2
<i>Would you refer our services to others?</i>	2
<i>Customer Satisfaction</i>	3
<i>How our customers used our services</i>	3
<i>Summary Data - All Locations</i>	4
<i>Summary Data - Individual Locations</i>	5
<i>Suggestions</i>	6
<i>Concerns</i>	7

Customer Flow for January 2009

Both Locations

- On average, Tuesdays were the busiest days of the week, averaging 255 customers per day. (Weekly Average: 1,080 customers)

Merced

- Tuesdays were the busiest day of the week, with an average of 128 customers per day. (Weekly Average: 574 customers).

Los Banos

- Tuesdays were the busiest day of the week, with an average of 127 customers per day. (Weekly Average: 506 customers).

Note:

- As of March, 2008, we are tracking new metrics: Total Visitors, Staff Appointment, EDD/Unemployment visits, Special Classes and Certificate Tests.



**Worknet
Customer Service & Satisfaction Report
For All Locations
January 2009**

Merced County Department of Workforce Investment

**Marketing advertisements for
January 2009**
** The Bus
Worknet signs inside buses*

How did you hear about us?

Responses from first-time visitors

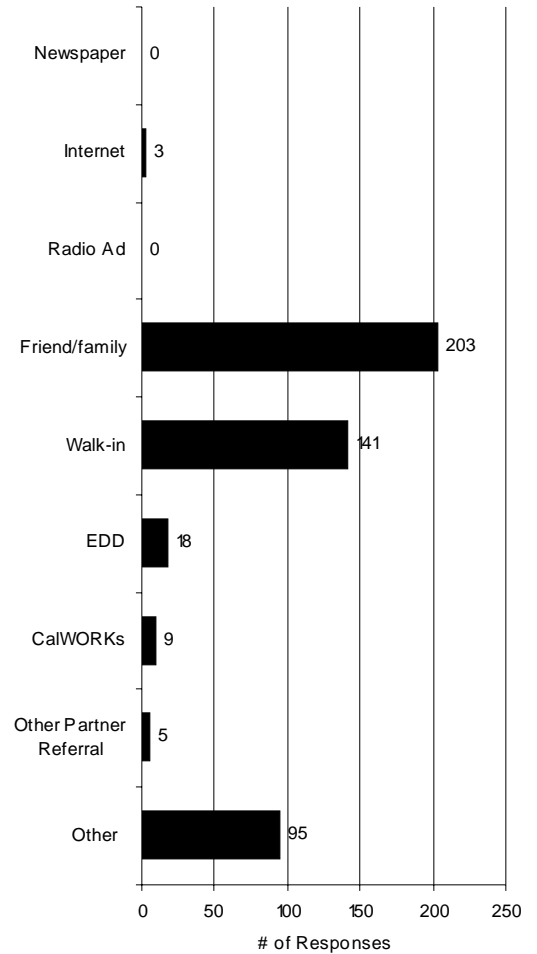
In January, our first time visitors responded most often that they heard about Worknet from friends or family, with 203 customers providing this response.

An additional 141 visitors responded that they were walk-in visitors to Worknet offices.

Of the 95 visitors whose responses were classed as "Other," all visiting both the Los Banos Worknet Offices wrote "PETCO" on the response form. Those visiting the Merced Worknet Office gave a variety of responses, of which "US Census" and "Winton School District" were the most common. Other responders wrote "CVOC", "Mervyns", "Merced College", "Riggs", or "Merced County" on the response form.

How Did You Hear About Us?

■ Jan-09



In January, 99.33 percent of our customers responding would refer our services to others

Would you refer our services to others?

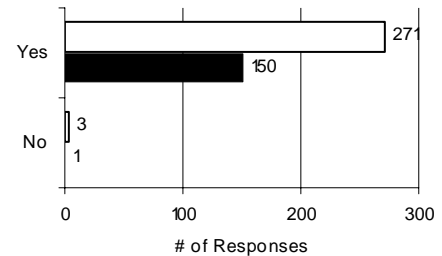
Of those responding to this question, 99.33 percent of our customers would refer our services to others.

PY 06/07 annual average: 98.36%

PY 07/08 annual average: 98.83%

Would you refer our services to others?

□ Jan-08
■ Jan-09

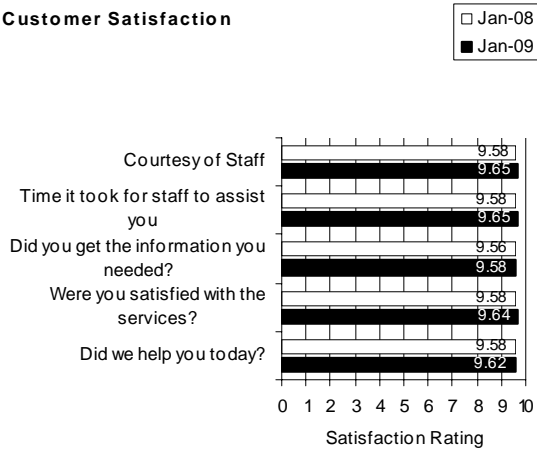




**Worknet
Customer Service & Satisfaction Report
For All Locations
January 2009**

Merced County Department of Workforce Investment

Customer Satisfaction



Customer Satisfaction Ratings

We received 159 surveys with responses to customer satisfaction questions in the month of January.

Consistently we see overall ratings for all questions in this category to be greater than 9.58 out of 10.

Two questionnaires contained a response of 5 or less.

“Consistently we see overall ratings for all questions in this category to be greater than 9.58 out of 10.”

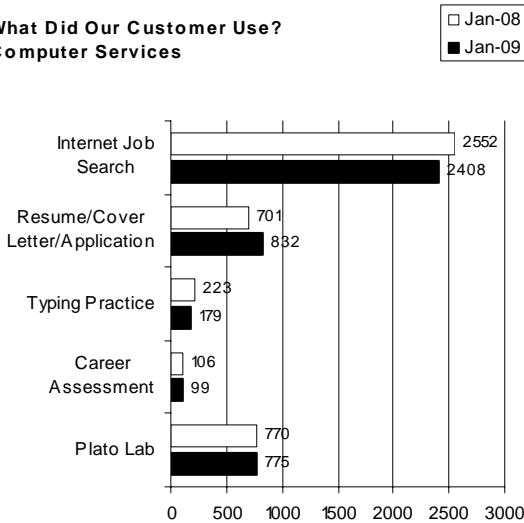
Return Rate For Customer Satisfaction Survey

Both Locations: 3.68%

Merced: 3.83%

Los Banos: 3.51%

**What Did Our Customer Use?
Computer Services**



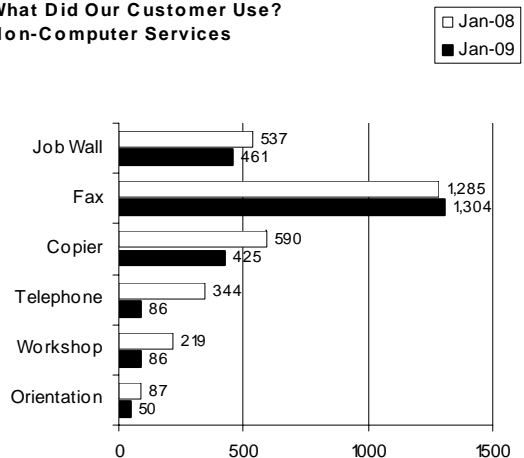
How our customers use our services

Computer related services are always the ones most used by our customers, with customers using one or more such services 4,293 times in January.

Internet Job Search and the Resume/Cover Letter/Application were our most accessed computer services.

1,304 customers used our Fax service at Worknet in the month of January.

**What Did Our Customer Use?
Non-Computer Services**



Fax and Job Wall were the most used non-computer related services. Copier, Workshop and Telephone were the next most used services under this category.



Worknet
Customer Service & Satisfaction Report
For All Locations
January 2009

Merced County Department of Workforce Investment

Customer Service/Satisfaction Summary Data - Both Locations

	Jan-08	Nov-08	Dec-08	Jan-09
Return Visits	4,223	2,713	3,085	3,856
First Visits	498	317	294	462
Total Visits	4,721	3,030	3,379	4,318
Total Visitors	1,980	1,498	1,530	1,932
How did you hear about us?				
Newspaper	3	0	0	0
Internet	0	1	0	3
Radio Ad	1	0	0	0
Friend/family	222	114	137	203
Walk-in	199	143	129	141
EDD	29	15	14	18
CalWORKs	7	4	10	9
Other Partner Referral	8	16	7	5
Other	21	23	13	95
What did our customers use?				
Internet Job Search	2,552	1,716	2,032	2,408
Resume/Cover Letter/Application	701	397	566	832
Typing Practice	223	223	168	179
Career Assessment	106	64	33	99
Job Wall	537	373	344	461
Fax	1,285	992	1,093	1,304
Copier	590	339	363	425
Telephone	344	64	78	86
Plato Lab	770	508	623	775
Workshop	219	50	65	86
Orientation	87	32	26	50
Staff Appointment	235	115	157	138
Special Class	49	34	59	326
EDD/Unemployment	90	124	98	169
Certificate Test	55	124	68	68
Customer Satisfaction				
Courtesy of Staff	9.58	9.69	9.72	9.65
Time it took for staff to assist you	9.58	9.73	9.77	9.65
Did you get the information you needed?	9.56	9.69	9.67	9.58
Were you satisfied with the services?	9.58	9.70	9.73	9.64
Did we help you today?	9.58	9.73	9.75	9.62
Would you refer our services to others?				
Yes	271	176	216	150
No	3	4	1	1



Worknet
Customer Service & Satisfaction Report
For All Locations
January 2009

Merced County Department of Workforce Investment

Customer Service/Satisfaction Summary Data - Individual Locations

Who were our visitors	Merced	Los Banos	Both Locations
Return Visits	2,064	1,792	3,856
First Visits	232	230	462
Total Visits	2,296	2,022	4,318
Total Visitors	1,095	837	1,932
How did you hear about us?			
Newspaper	0	0	0
Internet	3	0	3
Radio Ad	0	0	0
Friend/family	33	170	203
Walk-in	138	3	141
EDD	7	11	18
CalWORKs	4	5	9
Other Partner Referral	5	0	5
Other	44	51	95
What did our customers use?			
Internet Job Search	1,516	892	2,408
Resume / Cover Letter / Application	409	423	832
Typing Practice	139	40	179
Career Assessment	72	27	99
Job Wall	368	93	461
Fax	816	488	1,304
Copier	342	83	425
Telephone	3	83	86
Plato Lab	130	645	775
Workshop	56	30	86
Orientation	39	11	50
Staff Appointment	61	77	138
Special Class	16	310	326
EDD/Unemployment	107	62	169
Certificate Test	57	11	68
Customer Satisfaction			
Courtesy of Staff	9.56	9.75	9.65
Time it took for staff to assist you	9.63	9.68	9.65
Did you get the information you needed?	9.51	9.68	9.58
Were you satisfied with the services?	9.64	9.63	9.64
Did we help you today?	9.50	9.77	9.62
Would you refer our services to others?			
Yes	80	70	150
No	1	0	1



Worknet
Customer Service & Satisfaction Report
For All Locations
January 2009

Merced County Department of Workforce Investment

Page 6

Suggestions

Workshops on how to access jobs online and how to use computers to effectively apply online..
more jobs
no improvement, this service is very helpful.
I think worknet is awesome and they help you everytime.
Everything is great
You guys are doing a good job with services to improve.
Your service is good.
Be like you are. everything is very good.
Not right now, are doing a very good job improving services
n/a right now.
You provide services every body to improve services
No right now, you are doing a very good job improving service.
Coffee would be nice, Stop all spam e-mail.
Don't enforce the 1 hr. rule when there are empty work stations.
stop harassing clients on computers unless you see them not obeying rules.
The staff here in this company is doing a good job.
Everything is so fine.
More state funding for job training.
Your doing a great job.
Great customer services
No, everything is great
Doing a great job!
Great job on computer assistance and good resume help.
Todo esta muy bien!
coffee?
You guys are doing good!
Worknet is doing great! I will be coming back to Worknet!
No, its perfect.
I don't have any suggestions right now to help out, but maybe later
Everything is good.
Provide a phone.



Worknet
Customer Service & Satisfaction Report
For All Locations
January 2009

Merced County Department of Workforce Investment

Page 7

Concerns

Need more spanish speaking personnel on hand
nothing this is a great service already.
I don't have any concerns about this issues with me or careers.
No, I don't have any concerns at this time about issues at this time..
not right now
Not right now about any concerns or issues that can help me at this time.
No, I don't have any concerns at this time about issues right.
So far so good.
Job placement or training.
None at this time.
Computer room-No help
Just that I need a Job!
Gracias por todo!
Just helping me with getting a job.
My issue is that the phone in back is only, should only be used for job seeking only.
Computer skills, more
more jobs

TO: Workforce Investment Board

DATE: 03/19/09

FROM: WIB Staff

For Action

For Information

For Discussion

SUBJECT: WIA Fiscal Reports

PROPOSED MOTION(S): None. Information Only.

DISCUSSION: Attached is the Fiscal Report for Fiscal Year 2008/09 covering July 1, 2008 through January 31, 2009. This report shows all WIA funds available for Fiscal Year 2008/09, accrued expenditures through January 31, 2009, and obligations as of January 31, 2009. Target for expenditures is approximately 58.33% and as of January 31st we were at 43.99% of available Adult Funds, 44.24% of Dislocated Worker Funds, and 35.83% of Youth Formula Funds. This is within expectations as some costs come up later in the fiscal year. Other grants are at different percentages due to different grant timelines.

Staff will be at the meeting to answer questions.

**ATTACHMENT(S):
FY 2008/09 WIA Fiscal Report**

**MERCED COUNTY DEPARTMENT OF WORKFORCE INVESTMENT
FISCAL REPORT FOR FINANCE COMMITTEE
For Fiscal Year 2008/2009
July 1, 2008 - June 30, 2009
Through 01/31/09**

Target 58.33%

AVAILABLE FUNDS			BUDGET				ACTUAL			OBLIGATIONS			COMMITTED - AVAILABLE		
	Carryover Funds From 07/08	Appropriation FY 08/09	Planned for New Funds Per Estimated Plan Mod 7/1/08 to 6/30/09	Budget for Available Funds	Budget Adjustments	Revised Budget	Accrued Expense	Available	Percent Expended	Total Obligated Funds	Available after Obligations	Percent Spent + Obligated	Total Committed Funds	Available after Committed	Pct Spent + Obligated + Committed
							FY to Date		to Date						
ADULT															
08/09 Allocation		\$ 1,648,103	Core A \$ 351,716	\$ 418,161	\$ -	\$ 418,161	\$ 179,684	\$ 238,477	42.97%	\$ 7,763	\$ 230,714	44.83%	\$ 230,714	\$ -	100.00%
			Core B \$ 485,623	\$ 577,365	\$ -	\$ 577,365	\$ 335,477	\$ 241,888	58.10%	\$ 16,023	\$ 225,864	60.88%	\$ 225,864	\$ -	100.00%
			Intensive \$ 131,173	\$ 155,954	\$ -	\$ 155,954	\$ 60,408	\$ 95,545	38.73%	\$ 3,190	\$ 92,355	40.78%	\$ 92,355	\$ -	100.00%
PY Cash Balances 6/30/08	\$ 303,620		Training \$ 514,781	\$ 612,031	\$ -	\$ 612,031	\$ 200,216	\$ 411,815	32.71%	\$ 49,024	\$ 362,791	40.72%	\$ 362,791	\$ -	100.00%
	\$ 303,620	\$ 1,648,103	Total	\$ 1,483,293	\$ 1,763,510	\$ 1,763,510	\$ 775,786	\$ 987,724	43.99%	\$ 76,000	\$ 911,725	48.30%	\$ 911,724	\$ -	100.00%
DISPLACED WORKER															
08/09 Allocation		\$ 1,380,143	Core A \$ 441,622	\$ 549,564	\$ -	\$ 549,564	\$ 199,308	\$ 350,256	36.27%	\$ 11,951	\$ 338,305	38.44%	\$ 295,697	\$ 42,608	92.25%
		\$ 133,160	Core B \$ 399,429	\$ 497,058	\$ -	\$ 497,058	\$ 361,576	\$ 135,482	72.74%	\$ 20,607	\$ 114,875	76.89%	\$ 76,337	\$ 38,538	92.25%
DW Budgeted Portion of 25% DW AUG			Intensive \$ 120,619	\$ 150,101	\$ -	\$ 150,101	\$ 59,099	\$ 91,001	39.37%	\$ 6,924	\$ 84,077	43.99%	\$ 72,439	\$ 11,638	92.25%
PY Cash Balances 6/30/08	\$ 208,106		Training \$ 280,459	\$ 349,009	\$ -	\$ 349,009	\$ 63,798	\$ 285,211	18.28%	\$ 36,170	\$ 249,041	28.64%	\$ 221,982	\$ 27,059	92.25%
	\$ 208,106	\$ 1,513,303	Total	\$ 1,242,129	\$ 1,545,732	\$ 1,545,732	\$ 683,782	\$ 861,950	44.24%	\$ 75,652	\$ 786,298	49.13%	\$ 666,455	\$ 119,843	92.25%
YOUTH															
08/09 Allocation		\$ 1,760,318	In School \$ 950,573	\$ 1,434,320	\$ -	\$ 1,434,320	\$ 442,781	\$ 991,539	30.87%	\$ 560,268	\$ 431,271	69.93%	\$ 431,271	\$ -	100.00%
			Out of School \$ 633,714	\$ 956,213	\$ -	\$ 956,213	\$ 413,773	\$ 542,440	43.27%	\$ 339,286	\$ 203,154	78.75%	\$ 203,154	\$ -	100.00%
PY Cash Balances 6/30/08	\$ 911,140		Total	\$ 1,584,287	\$ 2,390,533	\$ 2,390,533	\$ 856,554	\$ 1,533,979	35.83%	\$ 899,554	\$ 634,425	73.46%	\$ 634,425	\$ -	100.00%
	\$ 911,140	\$ 1,760,318	Total Admin	\$ 478,855	\$ 644,815	\$ 644,815	\$ 264,929	\$ 379,886	41.09%	\$ 11,273	\$ 368,613	42.83%	\$ 15,033	\$ 353,580	45.17%
All Formula Grants	\$ 1,422,866	\$ 4,921,724	Total	\$ 4,788,564	\$ 6,344,590	\$ 6,344,590	\$ 2,581,050	\$ 3,763,540	40.68%	\$ 1,062,479	\$ 2,701,061	57.43%	\$ 2,227,637	\$ 473,423	92.54%
RAPID RESPONSE/15%/25%															
Formula Rapid Response (541)**	\$ 2,053	\$ 256,472	Rapid Resp. \$ 256,472	\$ 258,525	\$ -	\$ 258,525	\$ 136,657	\$ 121,868	52.86%	\$ 6,133	\$ 115,735	55.23%	\$ 15,735	\$ 100,000	61.32%
CalGRIP*	\$ 390,227		CalGRIP \$ -	\$ 390,227	\$ -	\$ 390,227	\$ 115,691	\$ 274,536	29.65%	\$ 260,309	\$ 14,227	96.35%	\$ 14,227	\$ -	100.00%
	\$ 392,280	\$ 256,472	Total	\$ 256,472	\$ 648,752	\$ 648,752	\$ 252,348	\$ 396,404	38.90%	\$ 266,442	\$ 129,962	79.97%	\$ 29,962	\$ 100,000	84.59%
INCENTIVE AWARDS															
08/09 Award (Amount TBD)			Incentive \$ -	\$ 12,646	\$ -	\$ 12,646	\$ 2,130	\$ 10,516	16.84%	\$ -	\$ 10,516	16.84%	\$ 10,516	\$ -	100.00%
PY Cash Balances 6/30/08	\$ 12,646		Total	\$ -	\$ 12,646	\$ 12,646	\$ 2,130	\$ 10,516	16.84%	\$ -	\$ 10,516	16.84%	\$ 10,516	\$ -	100.00%
	\$ 12,646	\$ -	Total	\$ -	\$ 12,646	\$ 12,646	\$ 2,130	\$ 10,516	16.84%	\$ -	\$ 10,516	16.84%	\$ 10,516	\$ -	100.00%
OTHER (DoL, Contract, etc.)															
Federal LVN Grant*	\$ 1,306,782		LVN Project \$ -	\$ 1,306,782	\$ -	\$ 1,306,782	\$ 513,783	\$ 792,999	39.32%	\$ 638,039	\$ 154,960	88.14%	\$ 39,896	\$ 115,064	91.19%
San Joaquin Manufacturing Contract*	\$ 52,068		San Joaquin \$ -	\$ 52,068	\$ -	\$ 52,068	\$ 52,068	\$ -	100.00%	\$ -	\$ -	100.00%	\$ -	\$ -	100.00%
Stan Alliance Biotech Contract		\$ 29,272	SA Biotech \$ 29,272	\$ 29,272	\$ -	\$ 29,272	\$ 7,530	\$ 21,742	25.72%	\$ 122	\$ 21,620	26.14%	\$ -	\$ 21,620	26.14%
CCWC (WorkKeys) Contract*	\$ 42,634		WorkKeys \$ -	\$ 42,634	\$ -	\$ 42,634	\$ 42,634	\$ -	100.00%	\$ -	\$ -	100.00%	\$ -	\$ -	100.00%
MC Career Advancement Academy		\$ 20,000	MCCAdvnc \$ 20,000	\$ 20,000	\$ -	\$ 20,000	\$ 12,602	\$ 7,398	63.01%	\$ 965	\$ 6,433	67.84%	\$ 6,433	\$ -	100.00%
	\$ 1,401,484	\$ 49,272	Total	\$ 49,272	\$ 1,450,756	\$ 1,450,756	\$ 628,617	\$ 822,139	43.33%	\$ 639,126	\$ 183,013	87.39%	\$ 46,329	\$ 136,684	90.58%

* Amounts represent cash balances remaining from entire multi-year award amounts, which are immediately available. **Rapid Response "carry in" is realized accruals claimed as cash for prior year closeout.

BUDGET:	Includes all funds available for fiscal year based on Plan to be submitted to EDD on request, revised in accordance with latest appropriations information received from Chief, Workforce Services Division, as required. Formula Administrative Funds lose their identity upon appropriation. Federal LVN Grant appropriation reduced \$18,504 by Modification #3 IAW PL 110-5. Additional Dislocated Worker and Rapid Response funds provided beginning in January 2009 by R970546-307 cash code.	In-School Youth	51.69%
OBLIGATIONS:	Includes funds obligated in contracts and ITA's. Does NOT include funds committed for operations.	Out-of-School Youth	48.31%
COMMITTED:	Includes projected staff personnel and overhead costs		
AVAILABLE:	Balance after expenditures and obligations.		

TO: Workforce Investment Board

DATE: 03/19/09

FROM: WIB Staff

For Action

For Information

For Discussion

SUBJECT: Participant Report

PROPOSED MOTION(S): Information only.

DISCUSSION: Attached is a participant report for the time period July 2008 through January 2008, which reflects the number of participants enrolled and exited (and how they entered and exited the programs) within specific grant codes. Each year a modification to the Workforce Investment Boards 5-Year Strategic Plan is submitted with projected participant numbers. The attached report is a comparison of the actual participant numbers with the projected numbers submitted in the yearly plan with 58.33% of the program year expended.

**ATTACHMENT(S):
Participant Report**

WIA PARTICIPANT SUMMARY REPORT - FORMULA GRANTS

PY 2008/09 - January 2009

Report Range 07/2008 to 01/2009

58.33% of Plan Year Expended

	Adult (201)			Dislocated Worker (501)		
	Actual	Planned	Per Cent	Actual	Planned	Per Cent
Total Participants	400	523	76.5%	100	208	48.1%
Participants Carried In	310	271	114.4%	69	70	98.6%
New Participants Entering Grant	90	252	35.7%	31	138	22.5%
Total Participants Exiting WI	245	318	77.0%	52	161	32.3%
Entered Unsubsidized Employment	151	299	50.5%	39	140	27.9%
Training Related	34	85	40.0%	3	53	5.7%
Other Exits*	17	19	89.5%	6	21	28.6%
Program Activities/Services Summary						
Core Services (Registered)	400	466	85.8%	100	135	74.1%
Intensive Services	196	216	90.7%	66	122	54.1%
Training Services**	32	110	29.1%	15	93	16.1%
Non-WIA Funded Services	127			20		
Supportive Services	159			34		

	Older Youth (301)				
	Older Youth	Younger Youth	Actual Total	Planned	Per Cent
Total Participants	115	240	355	490	72.4%
Participants Carried In	104	204	308	310	99.4%
New Participants Entering Grant	11	36	47	180	26.1%
Total Participants Exiting WI	33	66	99	102	97.1%
Entered Unsubsidized Employment	11	9	20	35	57.1%
Training Related	2	1	3	15	20.0%
Entered Post-Secondary Education	10	40	50	40	125.0%
Entered Advanced Training	1		1	7	14.3%
Attained High School Diploma/GED	1	40	41	55	74.5%
Other Exits	5	6	11	5	220.0%
Program Activities/Services Summary					
Goals Set (Younger Youth Only)**		90	90		

*Other Exits includes Exit Code 02 "Remained With Layoff Employer" for Dislocated Workers.

**Training Services totals exclude Non-WIA Funded Training Services

***Goals Set is no longer a Participant Plan data point. Results listed for informational purposes only.

WIA PARTICIPANT SUMMARY REPORT - OTHER GRANTS AND CONTRACTS

PY 2008/09 - January 2009

Report Range 07/2008 to 01/2009

	Federal LVN Grant (907)	SJC Manufacturing (914)	WIA 15% CalGRIP (414)	CalGRIP Younger Youth (417)
Total Participants	85	19	11	19
Participants Carried In				
New Participants Entering Grant	85	19	11	19
Total Participants Exiting WI	27	11		
Entered Unsubsidized Employment	11	10		
Training Related	19	6		
Entered Military Service				
Entered Qualified Apprenticeship Program				
Entered Post-Secondary Education				
Entered Advanced Training				
Attained Recognized Certificate/Diploma/Degree	17	10		
Attained High School Diploma/GED				
Returned to Secondary School (Youth Only)				
Exits Excluded from Performance				
Other Exits	4	1		
Program Activities/Services Summary				
Core Services (Registered)	83	19		
Intensive Services	80	19	11	19
Training Services*		8		
Non-WIA Funded Services	79	10		
Supportive Services	85	19		
Youth Services			11	19
Concurrent Program Participants	12	4	3	1
Individual Training Accounts				
Goals Set (Younger Youth Only)				

***Training Services totals exclude Non-WIA Funded Training Services**

WIA PARTICIPANT CHARACTERISTICS SUMMARY

Report Period: 7/2008 to 1/2009

FORMULA GRANTS

	ADULT		DISLOCATED WORKER		301 OLDER YOUTH		301 YOUNGER YOUTH		TOTAL (ALL GRANT CODES)	
	#	%	#	%	#	%	#	%	#	%
Total	400	100.0%	100	100.0%	122	100.0%	240	100.0%	862	100.0%
Female	296	74.0%	63	63.0%	78	63.9%	114	47.5%	551	63.9%
Male	104	26.0%	37	37.0%	44	36.1%	126	52.5%	311	36.1%
Age										
14-18	39	9.8%			10	8.2%	240	100.0%	289	33.5%
19-21	47	11.8%	3	3.0%	112	91.8%			162	18.8%
22-29	125	31.3%	7	7.0%					132	15.3%
30-44	139	34.8%	36	36.0%					175	20.3%
45-54	36	9.0%	35	35.0%					71	8.2%
55-61	12	3.0%	18	18.0%					30	3.5%
62-64	1	0.3%							1	0.1%
65 and over	1	0.3%	1	1.0%					2	0.2%
Race/Ethnicity										
American Indian / Alaskan Native	4	1.0%	1	1.0%			5	2.1%	10	1.2%
Asian	42	10.5%	5	5.0%	10	8.2%	47	19.6%	104	12.1%
Black / African American	19	4.8%	2	2.0%	6	4.9%	21	8.8%	48	5.6%
Hawaiian Native/Other Pacific Islander	12	3.0%	1	1.0%	2	1.6%	1	0.4%	16	1.9%
White	142	35.5%	38	38.0%	14	11.5%	33	13.8%	227	26.3%
Ethnicity Hispanic or Latino	203	50.8%	56	56.0%	91	74.6%	148	61.7%	498	57.8%
Labor Force Status										
Employed	155	38.8%	1	1.0%	14	11.5%	4	1.7%	174	20.2%
Unemployed	245	61.3%	99	99.0%	108	88.5%	236	98.3%	688	79.8%
UI Claimant	21	5.3%	81	81.0%	4	3.3%	1	0.4%	107	12.4%
UI Exhaustee	12	3.0%	16	16.0%					28	3.2%
Barriers to Employment										
Disabled	9	2.3%			7	5.7%	26	10.8%	42	4.9%
Limited English Proficiency	4	1.0%	3	3.0%	6	4.9%	7	2.9%	20	2.3%
Single Parent	82	20.5%	13	13.0%	22	18.0%	9	3.8%	126	14.6%
Work Profiling Reempl. Services Referral	1	0.3%	11	11.0%					12	1.4%
Low Income	256	64.0%	50	50.0%	112	91.8%	230	95.8%	648	75.2%
Displaced Homemaker										
Offender	6	1.5%	3	3.0%	14	11.5%	19	7.9%	42	4.9%
Homeless	2	0.5%	1	1.0%	3	2.5%	2	0.8%	8	0.9%
Runaway Youth					1	0.8%	3	1.3%	4	0.5%
Pregnant Parenting Youth					38	31.1%	17	7.1%	55	6.4%
Youth Needing Additional Assistance					122	100.0%	238	99.2%	360	41.8%
Basic Literacy Skills Deficient	56	14.0%	41	41.0%	110	90.2%	208	86.7%	415	48.1%
Substance Abuse	2	0.5%			5	4.1%	10	4.2%	17	2.0%
Foster Youth					1	0.8%	5	2.1%	6	0.7%

WIA PARTICIPANT CHARACTERISTICS SUMMARY

Report Period: 7/2008 to 1/2009

OTHER GRANTS AND CONTRACTS

	FEDERAL LVN GRANT (907)		SJC MANUFACTURING CONTRACT (914)		WIA 15% CALGRIP (414)		WIA 15% CALGRIP YOUNGER YOUTH (417)		TOTAL (ALL GRANT CODES)	
	#	%	#	%	#	%	#	%	#	%
Total	85	100.0%	19	100.0%	11	100.0%	19	100.0%	134	100.0%
Female	80	94.1%			4	36.4%	3	15.8%	87	64.9%
Male	5	5.9%	19	100.0%	7	63.6%	16	84.2%	47	35.1%
Age										
14-18					3	27.3%	19	100.0%	22	16.4%
19-21	2	2.4%	1	5.3%	8	72.7%			11	8.2%
22-29	39	45.9%	2	10.5%					41	30.6%
30-44	32	37.6%	13	68.4%					45	33.6%
45-54	10	11.8%	2	10.5%					12	9.0%
55-61	2	2.4%	1	5.3%					3	2.2%
62-64										
65 and over										
Race/Ethnicity										
American Indian / Alaskan Native										
Asian	28	32.9%					1	5.3%	29	21.6%
Black / African American	5	5.9%			1	9.1%	3	15.8%	9	6.7%
Hawaiian Native/Other Pacific Islander	4	4.7%							4	3.0%
White	26	30.6%	7	36.8%	1	9.1%	1	5.3%	35	26.1%
Ethnicity Hispanic or Latino	27	31.8%	12	63.2%	9	81.8%	14	73.7%	62	46.3%
Labor Force Status										
Employed	63	74.1%			1	9.1%			64	47.8%
Unemployed	22	25.9%	19	100.0%	10	90.9%	19	100.0%	70	52.2%
UI Claimant			8	42.1%					8	6.0%
UI Exhaustee	1	1.2%							1	0.7%
Barriers to Employment										
Disabled	1	1.2%	1	5.3%	1	9.1%	1	5.3%	4	3.0%
Limited English Proficiency	1	1.2%					3	15.8%	4	3.0%
Single Parent	23	27.1%			4	36.4%			27	20.1%
Work Profiling Reempl. Services Referral										
Low Income	36	42.4%	12	63.2%	11	100.0%	18	94.7%	77	57.5%
Displaced Homemaker										
Offender			5	26.3%	5	45.5%	17	89.5%	27	20.1%
Homeless			1	5.3%					1	0.7%
Runaway Youth							4	21.1%	4	3.0%
Pregnant Parenting Youth					4	36.4%	2	10.5%	6	4.5%
Youth Needing Additional Assistance					11	100.0%	18	94.7%	29	21.6%
Basic Literacy Skills Deficient	11	12.9%	4	21.1%	10	90.9%	14	73.7%	39	29.1%
Substance Abuse			1	5.3%			4	21.1%	5	3.7%
Foster Youth										

TO: Workforce Investment Board

DATE: 3/19/09

FROM: WIB Staff

For Action

For Information

For Discussion

SUBJECT: Workforce Investment Board (WIB) Nomination Committee

PROPOSED MOTION(S): Information only.

DISCUSSION: The WIB bylaws state: “Officers shall be elected by the Board members each year at the last regular Board meeting of the operating year, which commences on July 1 and ends on June 30...The terms of all officers shall be one (1) year. No person shall serve longer than two (2) terms in each position.”

The WIB Chairperson will appoint a nominating committee to recommend nominees by the last WIB meeting of this operating year.

ATTACHMENT(S): N/A

TO: Workforce Investment Board

DATE: 03/19/09

FROM: WIB Staff

For Action

For Information

For Discussion

SUBJECT: Participant Enrollment-Employment Data

PROPOSED MOTION(S): Information only.

DISCUSSION: During the Workforce Investment Board meeting on January 8, 2009, there was a request to supply supplemental Workforce Investment Act (WIA) participant data that may be useful to determine how long it takes people to become employed. Data was available on the State JTA system to compile the attached matrix.

**ATTACHMENT(S):
Participant Enrollment-Employment Data**

Participant Event Intervals

For Customers with Exit Dates between January 1 and December 31, 2008 who entered Unsubsidized Employment on Exit.

	Average
Adults (192 in sample)	
Days between Unemployment and Application	130
Days between Application and Enrollment	14
Days between Enrollment and Re-employment	110
Days between Re-employment and Exit	93
Dislocated Workers (72 in sample)	
Days between Dislocation and Application	143
Days between Application and Enrollment	15
Days between Enrollment and Re-employment	183
Days between Re-employment and Exit	104
Youth (33 in sample) ²	
Days between Unemployment and Application	171
Days between Application and Enrollment	1
Days between Enrollment and Re-employment	1050
Days between Re-employment and Exit	174

TO: Workforce Investment Board

DATE: 03/19/09

FROM: WIB Staff

For Action

For Information

For Discussion

SUBJECT: Local Workforce Investment Board Recertification

PROPOSED MOTION(S): Information only.

DISCUSSION: The Merced County Workforce Investment Board applies for recertification with the State every two years. The application was forwarded to the State on November 19, 2008. We received a letter from the California Workforce Investment Board on February 21, 2009, indicating the WIB has been certified for another two-year period between January 1, 2009 and December 30, 2010. This has also been verified by our State Regional Advisor.

ATTACHMENT(S):

California Workforce Investment Board Letter

Arnold Schwarzenegger
Governor

Lawrence Gottlieb
Chair

Chris Essel
Vice-Chair

Barbara Halsey
Executive Director

February 21, 2009

Albert Montejano, Chair
Merced County Workforce Investment Board
1880 West Wardrobe Ave
Merced, CA 95340-6407

RE: Workforce Investment Board Recertification

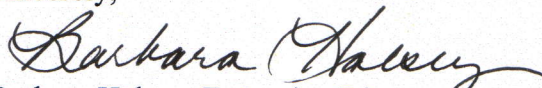
On January 9, 2009, the California Workforce Investment Board (State Board) voted to recertify 44 of California's Local Workforce Investment Boards (LWIBs) and conditionally certify 5 LWIBs. This recertification will be in effect from January 1, 2009, through December 30, 2010, or – in the event that Congress reauthorizes or extends the Workforce Investment Act (WIA) of 1998 during this two-year period – for the duration of California's current WIA Strategic Plan. Should reauthorization or extension come to pass before December 30, 2010, the State Board will revisit the issue of recertification of California LWIBs in light of the new federal legislation.

Local Workforce Investment Boards are recertified in accordance with WIA Section 117(c)(2), which specifies that the Governor shall certify one local board for each Local Workforce Investment Area once every two years. Your Board's recertification is based on information you provided to the Employment Development Department (EDD) in response to WIA Directive WIAD08-7.

The State will monitor the Local Boards for full compliance. Additionally, the State Board working closely with the Employment Development Department (EDD), will continue to identify opportunities to provide on an on-going basis technical assistance and incentives (e.g., eligibility for 15 Percent Discretionary grants) to support Local Boards efforts to comply with federal and State law; and to promulgate a clear process and timetable, in the event of non-compliance, that could lead to potential de-certification of the non-compliant Local Board.

We look forward to working with you to ensure the quality of service California job seekers and employers have come to expect from our state's workforce system.

Sincerely,



Barbara Halsey, Executive Director
California Workforce Investment Board

cc: Andrea Baker, Director

Save The Date!

April 14, 2009
Workforce Investment Board



WORKFORCE
INVESTMENT BOARD
MERCED COUNTY

"Joint WIB/BOS Meeting"

Location

Merced County Administration Building
Board Chambers

2222 M Street

Merced, CA 95340

Time

10:00 AM

Date

April 14, 2009

SAVE THE DATE

TO: Workforce Investment Board

DATE: 03/19/09

FROM: WIB Staff

For Action

For Information

For Discussion

SUBJECT: Green Jobs

PROPOSED MOTION(S): Information only.

DISCUSSION: During the Workforce Investment Board meeting on January 8, 2009, there was a request to provide some fundamental information regarding “Green Jobs.” Staff has done some initial research and would like to share the following:

While there is no commonly accepted definition for the term “green jobs,” the State of California’s definition is any activity or service that performs at least one of the following:

- **Generating and storing renewable energy**
- **Recycling existing materials**
- **Energy efficient product manufacturing, distribution, construction, installation, and maintenance**
- **Education, compliance and awareness**
- **Natural and sustainable product manufacturing**

Generating and storing renewable energy – includes alternative energy generated by, but not limited to:

- **Wind**
- **Solar**
- **Water**
- **Biofuels**
- **Biomass**
- **Hydrogen fuel cells**
- **Geothermal**

Recycling existing materials – Corporations involved in the collection and processing of recyclable materials, including firms running a recycling or wastewater plant. Includes environmental clean-up and remediation (does not include companies that provide bins for recyclable paper, glass, and cans).

Energy efficient product manufacturing, distribution, construction, installation, and maintenance which includes companies involved in the research, development, and manufacturing of products such as solar panels, energy efficient light bulbs, and vehicles. It also includes construction companies that install and repair these products in new or existing residential or commercial real estate, as well as real estate planning and land development.

Education, compliance, and awareness – This sector includes:

- **Training providers for curricula such as solar panel installation, energy auditing, sustainability management, and environmental careers.**
- **Environmental consulting**
- **Governmental/legislative compliance**
- **Conservation and wildlife programs**
- **Trading and offsets**
- **Social assistance**

Natural and sustainable product manufacturing – Includes companies that create products using natural materials. Also includes businesses that produce safe, nontoxic products; bamboo products; products out of previously-recycled materials, and agricultural firms that practice sustainable farming.

Assembly Bill 3018 was signed into law by Governor Schwarzenegger on September 26, 2008 is now cited as the California Green Collar Jobs Act of 2008. The legislation establishes a special committee of the California Workforce Investment Board known as the Green Collar Job Council. The council will drive planning, research, and funding to meet California’s growing green workforce needs. Specifically, the council is tasked to:

- **Assist in identifying and linking green collar job opportunities with workforce development training opportunities in the various regions of the State.**
- **Create public, private, and nongovernmental partnerships to build and expand the State’s workforce development program, network, and infrastructure.**
- **Establish job-training programs in the clean and green technology sectors to assist and prepare specific populations, such as at-risk youth, displaced workers, veterans, formerly incarcerated individuals, and others facing barriers to employment.**
- **Develop statewide and regional labor market data on California’s new and emerging green industries workforce needs, trends, and job growth**

More detailed information can be found at www.edf.org/cagreenjobs

ATTACHMENT(S): N/A