



The Quick Look

A Merced County Labor Market Review - November 2007

Welcome to the Merced County labor market review. The Quick Look has been developed by the Department of Workforce Investment staff for the Merced County Local Workforce Investment Board. The data and information is provided by the California Employment Development Department. Questions can be referred to the Department of Workforce Investment, 1880 West Wardrobe Avenue, Merced, CA 95340. Telephone (209) 724-2042. Email: pitd26@co.merced.ca.us or to EDD's Labor Market Information Division at (916) 262-2162.

Merced County Data not adjusted for Seasonality	Labor Force and Industrial Employment						
	March 2006 Benchmark					Percent Change	
	Nov 06	Sep 07	Oct 07	Nov 07	Month	Year	
Civilian Labor Force	101,800	102,600	101,900	101,100	-0.8%	-0.7%	
Civilian Employment	93,600	94,000	93,200	90,700	-2.7%	-3.1%	
Civilian Unemployment	8,200	8,600	8,700	10,400	19.5%	26.8%	
Civilian Unemployment Rate	8.1%	8.4%	8.5%	10.3%			
(CA Unemployment Rate)	4.6%	5.4%	5.4%	5.6%			
(U.S. Unemployment Rate)	4.3%	4.5%	4.4%	4.5%			
Total, All Industries	73,200	74,000	72,700	70,500	-3.0%	-3.7%	
Total Farm	12,200	13,000	13,000	11,000	-15.4%	-9.8%	
Total Nonfarm	61,000	61,000	59,700	59,500	-0.3%	-2.5%	
Total Private	45,700	45,400	43,900	43,300	-1.4%	-5.3%	
Goods Producing	14,400	14,500	13,200	12,500	-5.3%	-13.2%	
Natural Resources and Mining and Constuction	3,500	3,300	3,100	3,100	0.0%	-11.4%	
Construction	3,500	3,300	3,100	3,100	0.0%	-11.4%	
Manufacturing	10,900	11,200	10,100	9,400	-6.9%	-13.8%	
Durable Goods	1,900	2,000	1,900	1,900	0.0%	0.0%	
Nondurable Goods	9,000	9,200	8,200	7,500	-8.5%	-16.7%	
Service Providing	46,600	46,500	46,500	47,000	1.1%	0.9%	
Private Service Producing	31,300	30,900	30,700	30,800	0.3%	-1.6%	
Trade, Transportation and Utilities	11,500	11,100	11,100	11,200	0.9%	-2.6%	
Wholesale Trade	1,700	1,700	1,700	1,600	-5.9%	-5.9%	
Retail Trade	7,600	7,200	7,300	7,500	2.7%	-1.3%	
Food and Beverage Stores	1,500	1,500	1,500	1,500	0.0%	0.0%	
General Merchandise Stores	1,900	1,600	1,700	1,800	5.9%	-5.3%	
Residual - Miscellaneous Store Retailers	4,200	4,100	4,100	4,200	2.4%	0.0%	
Transportation, Warehousing and Utilities	2,200	2,200	2,100	2,100	0.0%	-4.5%	
Information	1,400	1,400	1,400	1,400	0.0%	0.0%	
Financial Activities	1,900	2,100	2,100	2,100	0.0%	10.5%	
Finance and Insurance	1,200	1,300	1,300	1,300	0.0%	8.3%	
Real Estate and Rental and Leasing	700	800	800	800	0.0%	14.3%	
Professional and Business Services	4,000	3,900	3,900	3,900	0.0%	-2.5%	
Educational and Health Services	5,900	5,900	5,900	5,900	0.0%	0.0%	
Leisure and Hospitality	5,000	4,900	4,800	4,800	0.0%	-4.0%	
Food Services and Drinking Places	4,200	4,200	4,200	4,200	0.0%	0.0%	
Residual - Arts, Entertainment, and Recreation	800	700	600	600	0.0%	-25.0%	
Other Services	1,600	1,600	1,500	1,500	0.0%	-6.3%	
Government	15,300	15,600	15,800	16,200	2.5%	5.9%	
Federal Government	800	800	800	800	0.0%	0.0%	
State Government	1,500	1,800	1,800	1,800	0.0%	20.0%	
Local Government	13,000	13,000	13,200	13,600	3.0%	4.6%	

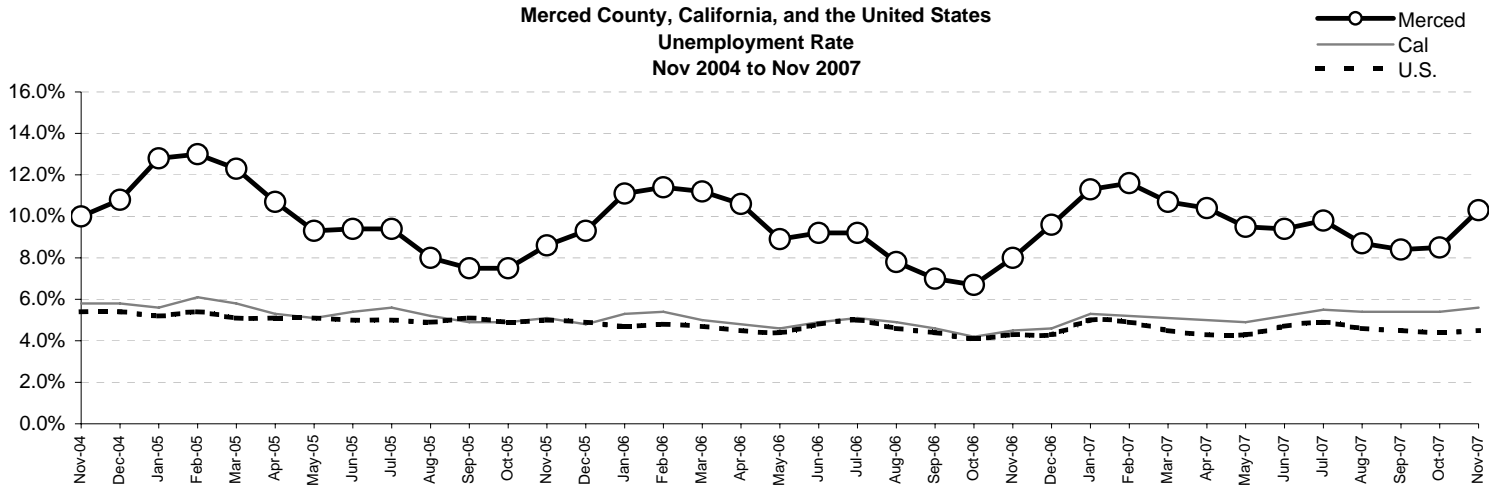
The County continues with one of the highest unemployment rates in the State, ranking 56th out of 58 counties in the month of November. The preliminary result is a increase of 1.8 percentage point in the unemployment rate from the October rate. For year ago data, this preliminary figure is an increase of 2.2 percentage point in the unemployment rate.

Overall, the County's Civilian Labor Force decreased by 800 persons over last month's figure and an decrease of 700 persons over year ago figure. Industrial employment decreased by 2,200 jobs in November over October's figure and a decrease of 2,700 jobs over year ago's figures.

The Quick Look

Nov 2007

**Merced County, California, and the United States
Unemployment Rate
Nov 2004 to Nov 2007**

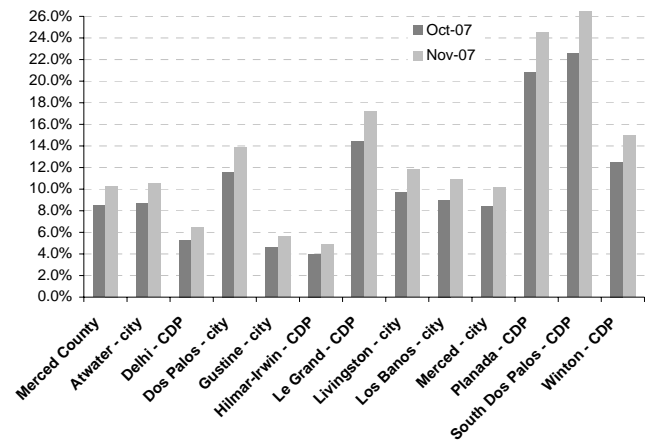


Sub County average unemployment rates for the county, cities, and municipalities.

Area Name	Labor Force	Employment	Unemployment	
			Number	Rate
Merced County	101,100	90,700	10,400	10.3%
Atwater city	11,800	10,600	1,200	10.5%
Delhi CDP	4,000	3,700	300	6.5%
Dos Palos city	1,900	1,600	300	13.9%
Gustine city	2,400	2,300	100	5.6%
Hilmar Irwin CDP	2,700	2,600	100	4.9%
Le Grand CDP	700	600	100	17.2%
Livingston city	5,000	4,400	600	11.8%
Los Banos city	12,600	11,200	1,400	10.9%
Merced city	30,000	26,900	3,100	10.2%
Planada CDP	1,600	1,200	400	24.5%
South Dos Palos CDP	400	300	100	26.5%
Winton CDP	3,800	3,200	600	15.0%

CDP - Census Designated Place

Merced County - Community Unemployment



Merced County's workforce has grown over the past 16 years reflecting improvement of the County's economic well being; however, unemployment remains a consistent barrier to greater prosperity. Average unemployment has fluctuated from an annual low of 9.3 percent to an annual high of 17.5 percent.

Counties in the San Joaquin Valley Quick Look

County	Rank	Labor Force	Employ	Unemployed	Rate
Merced	56	101,100	90,700	10,400	10.3%
Fresno	49	423,600	385,300	38,300	9.0%
Kern	43	352,800	323,000	29,800	8.4%
Kings	49	57,700	52,500	5,200	9.0%
Madera	39	64,900	59,900	5,000	7.7%
San Joaquin	48	290,900	265,300	25,600	8.8%
Stanislaus	51	229,800	209,000	20,800	9.1%
Tulare	53	194,600	176,300	18,300	9.4%
San Joaquin Valley		1,715,400	1,562,000	153,400	8.9%

Counties in the San Joaquin Valley Unemployment Rates

