



Worknet

Customer Service & Satisfaction Report

For All Locations

OCTOBER 2005

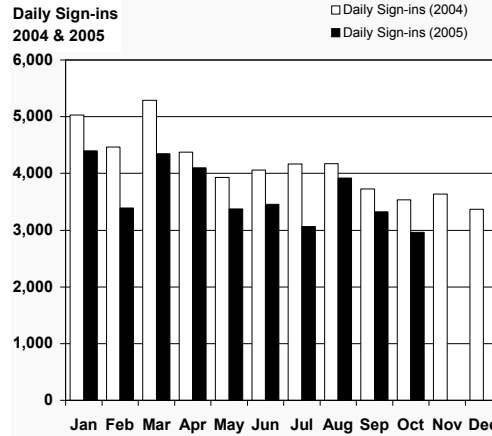
Merced County Department of Workforce Investment

Daily Sign-ins

Daily sign-ins for October totaled 2,966. Down 358 from the previous month and down 570 from October 2004. Daily sign-ins for the month of October is below the 5 year average.

October's 5 year average: 3,426

2004 annual average: 4,146

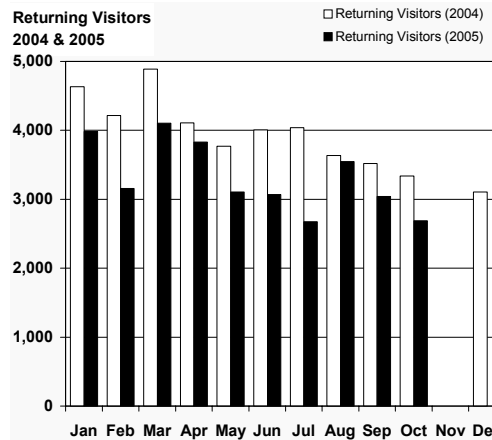


Return Visits

Return visits for October totaled 2,966. Down 350 from the previous month and down 649 from October 2004. Return visits for the month of October is below the 5 year average.

October's 5 year average: 3191

2004 annual average: 3,605

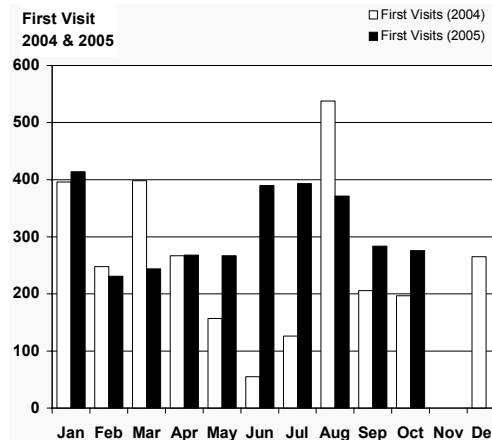


First Visits

First Visits for October totaled 276. Down 8 from the previous month and up 79 from October 2004. First visits for the month of October exceeds the 5 year average.

October 5 year average: 235

2004 annual average: 238



Contents

<i>How did you hear about us?</i>	2
<i>Would you refer our services to others?</i>	2
<i>Customer Satisfaction</i>	3
<i>How our customers used our services</i>	3
<i>Summary Data - All Locations</i>	4
<i>Summary Data - Individual Locations</i>	5

Customer Flow for October 2005

All Locations

- On average, Tuesdays were the busiest days of the week. Averaging 169 clients per day. (Weekly Average: 757 customers)

Merced

- Tuesdays were the busiest day of the week, with an average of 107 clients per day. (Weekly Average: 443 customers).

Los Banos

- Tuesdays were the busiest day of the week, with an average of 56 clients per day (Weekly Average: 284 customers).

Livingston

- Mondays were the busiest day of the week, with an average of 9 per day (Weekly Average: 30 customers).



**Marketing advertisements for
September 2005**

** Valley Values
09/1, 15, 29/2005*

** The Bus
Worknet signs inside buses*

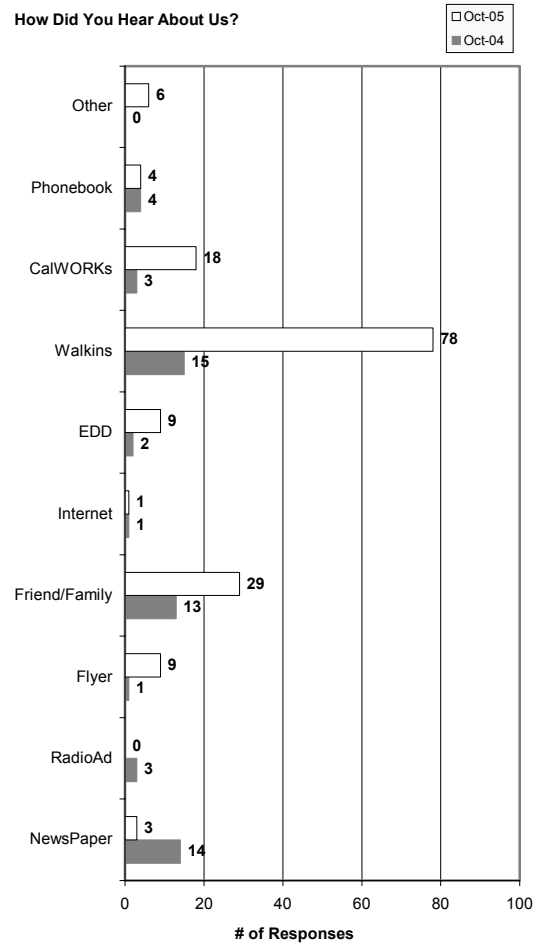
How did you hear about us?

One hundred fifty-seven customers responded to this question in October.

Seventy-eight customers responded with Walk-in as the most frequent response. Friend or Family was the next most frequent response.

We change the method of collecting the data in November 2004 to capture more responses. Due to this change, prior year data is not directly comparable. When comparing current data with prior year data, compare only the rank of the response.

How Did You Hear About Us?



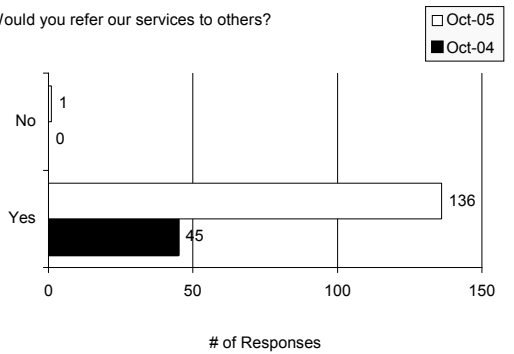
99.3 percent of our customer would refer our services to others

Would you refer our services to others?

Of those responding to this question, 99.3 percent of our customers would refer our services to others.

PY 03/04 annual average: 98.6%
PY 04/05 annual average: 97.3%

Would you refer our services to others?





**Worknet
Customer Service & Satisfaction Report
For All Locations**

OCTOBER 2005

Merced County Department of Workforce Investment

Page 3

Customer Satisfaction



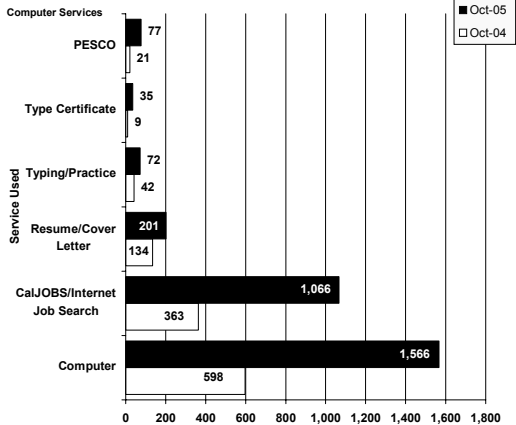
Customer Satisfaction Ratings

Customer satisfaction questions received 156 responses from our customers in October. These questions received ratings between 9.80 and 9.84, with “Did you get the information you needed?” receiving the highest rating.

There was 2 customer that rated “Courtesy of Staff”, with a 5 or less, representing 1.3 percent of our customers.

‘Did you get the information you needed?’ received the highest rating with 9.84 on a scale of 1 to 10.

What Did Our Customer Use?

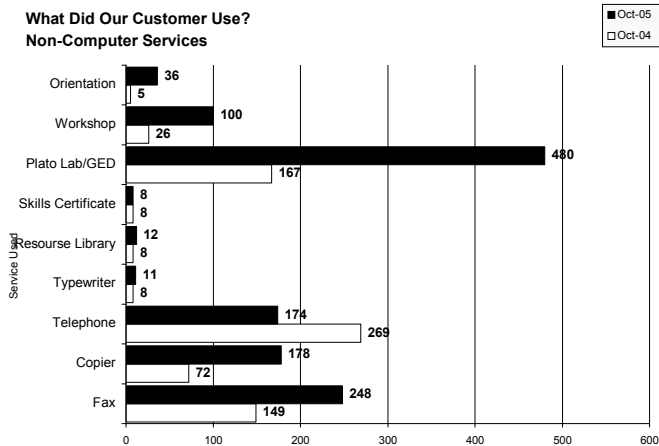


How our customers use our services?

Computer related services are always the most used service by our customers, with 2,744 customers responding to this question. CalJobs/Internet Job Search and Resume/Cover Letter received the most usage within the computer service sub-topic.

‘248 customers used the Fax Machine at WorkNet in the month of October.’

**What Did Our Customer Use?
Non-Computer Services**



Plato Lab/GED and Fax are the most used non-computer related services. Telephone Copier, and Workshop are the next most use services under this category.



**Worknet
Customer Service & Satisfaction Report
For All Locations**

OCTOBER 2005

Merced County Department of Workforce Investment

Customer Service/Satisfaction Summary Data - All Locations

	Oct-04	Aug-05	Sep-05	Oct-05
Daily Sign-ins				
Return Visit	3,339	3,549	3,040	2,690
First Visit	197	371	284	276
Total	3,536	3,920	3,324	2,966
How did you hear about us?				
NewsPaper	14	3	8	3
RadioAd	3	0	1	0
Flyer	1	1	11	9
Friend/Family	13	13	31	29
Internet	1	0	0	1
EDD	2	8	5	9
Walkins	15	73	94	78
CalWORKs	3	6	14	18
Phonebook	4	1	1	4
Other	NA	1	10	6
What did our customer use?				
Computer	598	2,056	1,903	1,566
CalJOBS/Internet Job Search	363	1,424	1,290	1,066
Resume/Cover Letter	134	485	264	201
Typing/Practice	42	126	90	72
Type Certificate	9	94	39	35
PESCO	21	42	34	77
Job Listing	344	803	543	516
Fax	149	423	321	248
Copier	72	487	229	178
Telephone	269	231	186	174
Typewriter	8	8	19	11
Resource Library	8	15	11	12
Skills Certificate	8	9	9	8
Plato Lab/GED	167	489	518	480
Workshop	26	121	122	100
Orientation	5	59	42	36
Customer Satisfaction				
Courtesy of Staff	9.36	9.50	9.12	9.72
Time it took for staff to assist you	9.32	9.49	9.44	9.80
Did you get the information you needed	9.46	9.52	9.49	9.84
Were you satisfied with the services?	9.33	9.52	9.58	9.83
Did we help you today?	9.35	9.52	9.67	9.82
Would you refer our services to others?				
Yes	102	152	136	136
No	2	2	1	1



**Worknet
Customer Service & Satisfaction Report
For All Locations**

OCTOBER 2005

Merced County Department of Workforce Investment

Page 5

Customer Service/Satisfaction Summary Data - Individual Locations

Number of Sign-ins																					
Day of the Week	M	T	W	TH	F	T	W	TH	F	M	T	W	TH	F	M	T	W	TH	F	M	Total
Date	03	04	05	06	07	11	12	13	14	17	18	19	20	21	24	25	26	27	28	31	Total
Livingston	12	6	6	8	5	9	7	5	7	8	5	4	2	4	8	3	8	3	7	6	123
Los Banos	43	53	59	130	70	67	47	53	49	54	46	51	44	45	54	58	59	50	37	49	1,118
Merced	105	88	73	76	81	92	110	110	0	108	119	83	67	80	94	128	75	80	72	84	1,725
Total	160	147	138	214	156	168	164	168	56	170	170	138	113	129	156	189	142	133	116	139	2,966

Who were are visitors	Merced	Los Banos	Livingston	All Locations
First Visit	143	101	32	276
Return Visit	1,582	1,017	91	2,690
How did you hear about us?				
Newspaper	0	3	0	3
Radio Ad	0	0	0	0
Flyer	1	8	0	9
Friend	4	15	10	29
Internet	1	0	0	1
EDD	1	5	3	9
Walk-ins	6	53	19	78
CalWORKs	2	14	2	18
Phone Book	3	1	0	4
Other	1	4	0	5
What did our customers use?				
Computer	1,020	437	109	1,566
CalJOBS/Internet Job Search	658	336	72	1,066
Resume	116	61	24	201
Typing	36	24	12	72
Typing Certificate	22	6	7	35
Career	45	31	1	77
Job Listing	170	272	74	516
Fax	131	100	17	248
Copier	132	40	6	178
Telephone	98	63	13	174
Typewriter	3	8	0	11
Resource Library	4	7	1	12
Skills Certificate	4	4	0	8
Plato Lab	110	370	0	480
Workshop	4	96	0	100
Orientation	28	8	0	36
Customer Satisfaction				
Courtesy of Staff	9.37	9.84	9.60	9.72
Time it took for staff to assist you	9.79	9.79	9.83	9.80
Did you get the information you needed?	9.89	9.85	9.80	9.84
Were you satisfied with the services?	9.84	9.83	9.83	9.83
Did we help you today?	9.79	9.83	9.83	9.82



Worknet

Customer Service & Satisfaction Report

For All Locations

NOVEMBER 2005

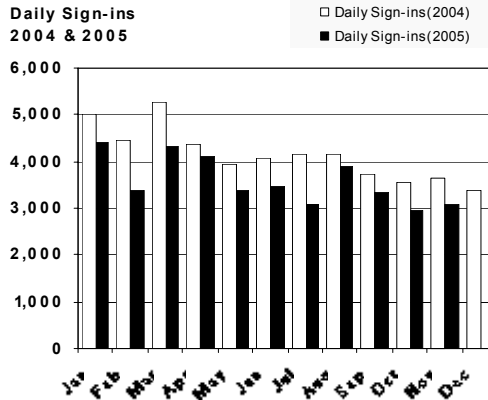
Merced County Department of Workforce Investment

Daily Sign-ins

Daily sign-ins for November 3,088 totaled. Up 122 from the previous month and up 548 from November 2004. Daily sign-ins for the month of November is below the 5 year average.

November's 5 year average: 3,426

2004 annual average: 4,146

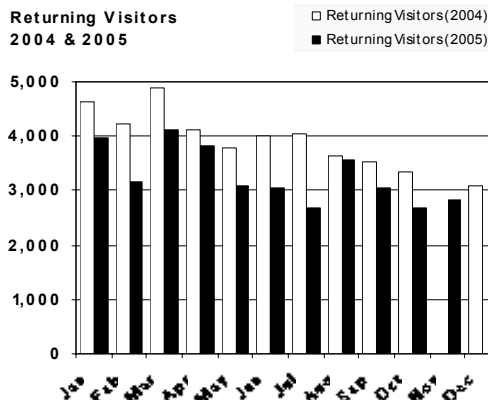


Return Visits

Return visits for November totaled 2,823. Up 133 from the previous month. Due to a change in the method of data collection return visits can not be compared to last years data.

November's 5 year average: NA

2004 annual average: 3,605

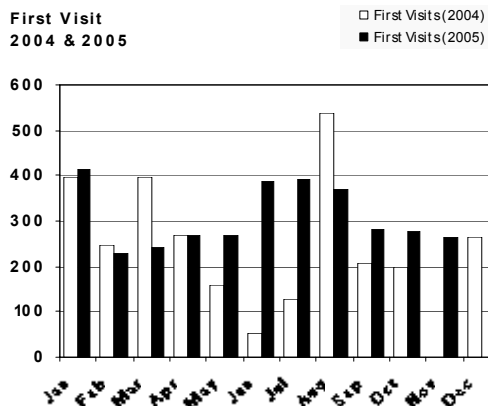


First Visits

First Visits for November totaled 365. Down 11 from the previous month. Due to a change in the method of data collection return visits can not be compared to last years data.

November's 5 year average:

2004 annual average: 238



Contents

<i>How did you hear about us?</i>	2
<i>Would you refer our services to others?</i>	2
<i>Customer Satisfaction</i>	3
<i>How our customers used our services</i>	3
<i>Summary Data - All Locations</i>	4
<i>Summary Data - Individual Locations</i>	5

Customer Flow for November 2005

All Locations

- On average, Mondays were the busiest days of the week. Averaging 181 clients per day. (Weekly Average: 618 customers)

Merced

- Mondays were the busiest day of the week, with an average of 105 clients per day. (Weekly Average: 397 customers).

Los Banos

- Wednesdays were the busiest day of the week, with an average of 54 clients per day (Weekly Average: 350 customers).

Livingston

- Mondays were the busiest day of the week, with an average of 9 per day (Weekly Average: 27 customers).



The Quick Look

A Merced County Labor Market Review - September 2005

Welcome to the Merced County labor market review. The Quick Look has been developed by the Department of Workforce Investment staff for the Merced County Local Workforce Investment Board. The data and information is provided by the California Employment Development Department. Questions can be referred to the Department of Workforce Investment, 1880 West Wardrobe Avenue, Merced, CA 95340. Telephone (209) 724-2042. Email: pitd26@co.merced.ca.us

Merced County Data not adjusted for Seasonality	Labor Force and Industrial Employment					
	March 2004 Benchmark				Percent Change	
	Sep 04	Jul 05	Aug 05 Revised	Sep 05 Prelim.	Month	Year
Civilian Labor Force	99,300	99,700	102,900	102,500	-0.4%	3.2%
Civilian Employment	91,400	90,600	94,500	94,700	0.2%	3.6%
Civilian Unemployment	7,900	9,100	8,400	7,800	-7.1%	-1.3%
Civilian Unemployment Rate	8.0%	9.1%	8.2%	7.6%		
(CA Unemployment Rate)	5.7%	5.4%	5.1%	4.8%		
(U.S. Unemployment Rate)	5.1%	5.2%	4.9%	4.8%		
Total, All Industries	70,200	68,000	71,100	72,500	2.0%	3.3%
Total Farm	12,400	11,700	12,100	12,700	5.0%	2.4%
Total Nonfarm	57,800	56,300	59,000	59,800	1.4%	3.5%
Total Private	45,000	45,400	45,800	46,100	0.7%	2.4%
Goods Producing	15,800	16,500	16,800	16,900	0.6%	7.0%
Natural Resources and Mining	0	100	100	100	0.0%	
Construction	3,500	4,000	4,000	4,000	0.0%	14.3%
Manufacturing	12,300	12,400	12,700	12,800	0.8%	4.1%
Durable Goods	1,700	1,600	1,600	1,600	0.0%	-5.9%
Nondurable Goods	10,600	10,800	11,100	11,200	0.9%	5.7%
Food Man & Beverage & Tobacco	9,000	9,300	9,500	9,700	2.1%	7.8%
Residual - Textile Mills	1,600	1,500	1,600	1,500	-6.3%	-6.3%
Service Providing	42,000	39,800	42,200	42,900	1.7%	2.1%
Private Service Producing	29,200	28,900	29,000	29,200	0.7%	0.0%
Trade, Transportation and Utilities	11,000	11,000	11,000	10,900	-0.9%	-0.9%
Wholesale Trade	1,500	1,400	1,400	1,400	0.0%	-6.7%
Retail Trade	7,600	7,700	7,700	7,600	-1.3%	0.0%
Food and Beverage Stores	1,500	1,500	1,500	1,500	0.0%	0.0%
General Merchandise Stores	1,600	1,800	1,800	1,700	-5.6%	6.3%
Residual - Miscellaneous Store Retailers	4,500	4,400	4,400	4,400	0.0%	-2.2%
Transportation, Warehousing and Utilities	1,900	1,900	1,900	1,900	0.0%	0.0%
Information	1,400	1,300	1,300	1,400	7.7%	0.0%
Financial Activities	1,800	1,700	1,800	1,800	0.0%	0.0%
Finance and Insurance	1,100	1,000	1,100	1,100	0.0%	0.0%
Real Estate and Rental and Leasing	700	700	700	700	0.0%	0.0%
Professional and Business Services	3,300	3,300	3,300	3,400	3.0%	3.0%
Educational and Health Services	5,400	5,300	5,300	5,400	1.9%	0.0%
Leisure and Hospitality	4,700	4,700	4,700	4,700	0.0%	0.0%
Food Services and Drinking Places	4,000	3,900	3,900	3,900	0.0%	-2.5%
Residual - Arts, Entertainment, and Recreation	700	800	800	800	0.0%	14.3%
Other Services	1,600	1,600	1,600	1,600	0.0%	0.0%
Government	12,800	10,900	13,200	13,700	3.8%	7.0%
Federal Government	800	800	800	800	0.0%	0.0%
State Government	500	800	900	900	0.0%	80.0%
Local Government	11,500	9,300	11,500	12,000	4.3%	4.3%

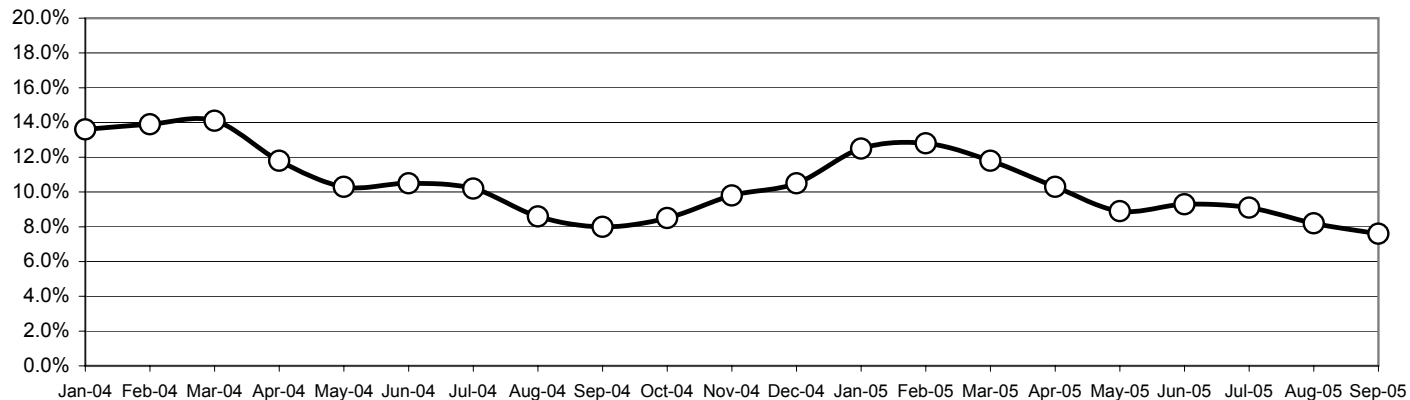
The County continues with one of the highest unemployment rates in the State, ranking 54rd out of 58 counties in the Month of September. The preliminary result is a decrease of 0.6 percentage point in the unemployment rate from the revised August rate. This preliminary figure is a decrease of 0.4 percentage point from the unemployment rate of one year ago.

Overall, the County's Civilian Labor Force decreased by 400 persons over last month's figure and an increase of 3,200 persons over year ago figures. Industrial employment increased by 1,400 jobs in September over August's figures and showed an increased of 2,300 jobs over year ago figures.

The Quick Look

A Merced County Labor Market Review - September 2005

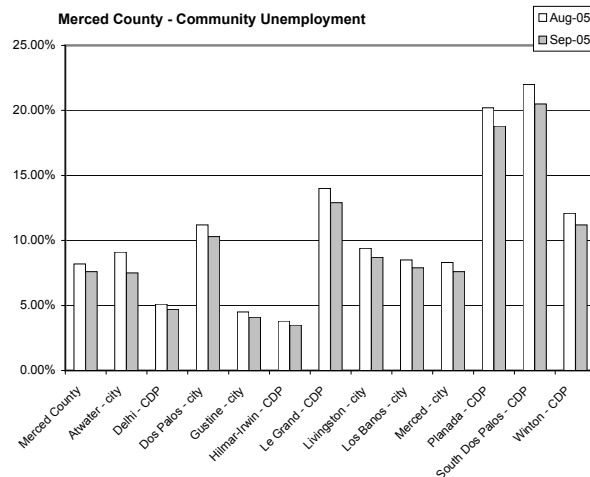
**Merced County Unemployment Rate
2004 - 2005**



Sub County average unemployment rates for the county, cities, and municipalities.

Area Name	Labor Force	Employment	Unemployment	
			Number	Rate
Merced County	102,500	94,700	78,000	7.6%
Atwater City	12,000	11,100	900	7.5%
Delhi CDP	4,000	3,800	200	4.7%
Dos Palos City	1,900	1,700	200	10.3%
Gustine City	2,500	2,400	100	4.1%
Hilmar-Irwin CDP	2,800	2,700	100	3.5%
Le Grand CDP	700	600	100	12.9%
Livingston City	4,900	4,500	400	8.7%
Los Banos City	12,700	11,700	1,000	7.9%
Merced City	30,300	28,000	2,300	7.6%
Planada CDP	1,600	1,300	300	18.8%
South Dos Palos CDP	400	300	100	20.5%
Winton CDP	3,800	3,400	400	11.2%

CDP - Census Designated Place

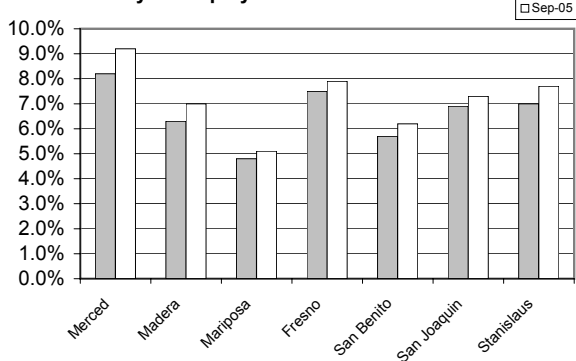


Merced County's workforce has grown over the past 20 years reflecting improvement of the County's economic well being; however, unemployment remains a consistent barrier to greater prosperity. Average unemployment has fluctuated from an annual low of 9.7 percent to an annual high of 17.1 percent.

Seven County Quick Look

County	Rank	Labor Force	Employ	Unemployed	Rate
Merced	56	99,400	90,200	9,200	9.2%
Madera	40	65,700	61,100	4,600	7.0%
Mariposa	18	9,520	9,040	480	5.1%
Fresno	49	427,700	393,900	33,800	7.9%
San Benito	34	25,100	23,500	1,600	6.2%
San Joaquin	43	291,500	270,300	21,200	7.3%
Stanislaus	46	236,300	218,100	18,200	7.7%

Seven County Unemployment Rate





The Quick Look

A Merced County Labor Market Review - October 2005

Welcome to the Merced County labor market review. The Quick Look has been developed by the Department of Workforce Investment staff for the Merced County Local Workforce Investment Board. The data and information is provided by the California Employment Development Department. Questions can be referred to the Department of Workforce Investment, 1880 West Wardrobe Avenue, Merced, CA 95340. Telephone (209) 724-2042. Email: pitd26@co.merced.ca.us

Merced County Data not adjusted for Seasonality	Labor Force and Industrial Employment					
	March 2004 Benchmark				Percent Change	
	Oct 04	Aug 05	Sep 05 Revised	Oct 05 Prelim.	Month	Year
Civilian Labor Force	99,700	102,900	102,500	101,400	-1.1%	1.7%
Civilian Employment	91,200	94,500	94,700	93,200	-1.6%	2.2%
Civilian Unemployment	8,500	8,400	7,900	8,200	3.8%	-3.5%
Civilian Unemployment Rate	8.5%	8.2%	7.7%	8.1%		
(CA Unemployment Rate)	5.7%	5.1%	4.9%	5.0%		
(U.S. Unemployment Rate)	5.1%	4.9%	4.8%	4.6%		
Total, All Industries	69,800	71,100	72,600	70,900	-2.3%	1.6%
Total Farm	12,100	12,100	12,700	12,400	-2.4%	2.5%
Total Nonfarm	57,700	59,000	59,900	58,500	-2.3%	1.4%
Total Private	44,500	45,800	46,000	44,700	-2.8%	0.4%
Goods Producing	15,000	16,800	16,900	15,500	-8.3%	3.3%
Natural Resources and Mining	0	100	100	0	-100.0%	
Construction	3,600	4,000	4,000	39,000	-2.5%	8.3%
Manufacturing	11,400	12,700	12,800	11,600	-9.4%	1.8%
Durable Goods	1,600	1,600	1,600	1,600	0.0%	0.0%
Nondurable Goods	9,800	11,100	11,200	10,000	-10.7%	2.0%
Food Man & Beverage & Tobacco	8,200	9,500	9,700	8,500	-12.4%	3.7%
Residual - Textile Mills	1,600	1,600	1,500	1,500	0.0%	-6.3%
Service Providing	42,700	42,200	43,000	43,000	0.0%	0.7%
Private Service Producing	29,500	29,000	29,100	29,200	0.3%	-1.0%
Trade, Transportation and Utilities	11,200	11,000	10,900	11,100	1.8%	-0.9%
Wholesale Trade	1,500	1,400	1,400	1,400	0.0%	-6.7%
Retail Trade	7,800	7,700	7,600	7,800	2.6%	0.0%
Food and Beverage Stores	1,500	1,500	1,500	1,500	0.0%	0.0%
General Merchandise Stores	1,700	1,800	1,700	1,800	5.9%	5.9%
Residual - Miscellaneous Store Retailers	4,600	4,400	4,400	4,500	2.3%	-2.2%
Transportation, Warehousing and Utilities	1,900	1,900	1,900	1,900	0.0%	0.0%
Information	1,400	1,300	1,300	1,300	0.0%	-7.1%
Financial Activities	1,800	1,800	1,800	1,800	0.0%	0.0%
Finance and Insurance	1,100	1,100	1,100	1,100	0.0%	0.0%
Real Estate and Rental and Leasing	700	700	700	700	0.0%	0.0%
Professional and Business Services	3,400	3,300	3,400	3,300	-2.9%	-2.9%
Educational and Health Services	5,400	5,300	5,400	5,400	0.0%	0.0%
Leisure and Hospitality	4,700	4,700	4,700	4,700	0.0%	0.0%
Food Services and Drinking Places	4,000	3,900	3,900	3,900	0.0%	-2.5%
Residual - Arts, Entertainment, and Recreation	700	800	800	800	0.0%	14.3%
Other Services	1,600	1,600	1,600	1,600	0.0%	0.0%
Government	12,400	12,400	13,100	13,000	-0.8%	4.5%
Federal Government	800	800	800	800	0.0%	0.0%
State Government	500	900	900	900	0.0%	80.0%
Local Government	11,900	11,500	12,200	12,100	-0.8%	1.7%

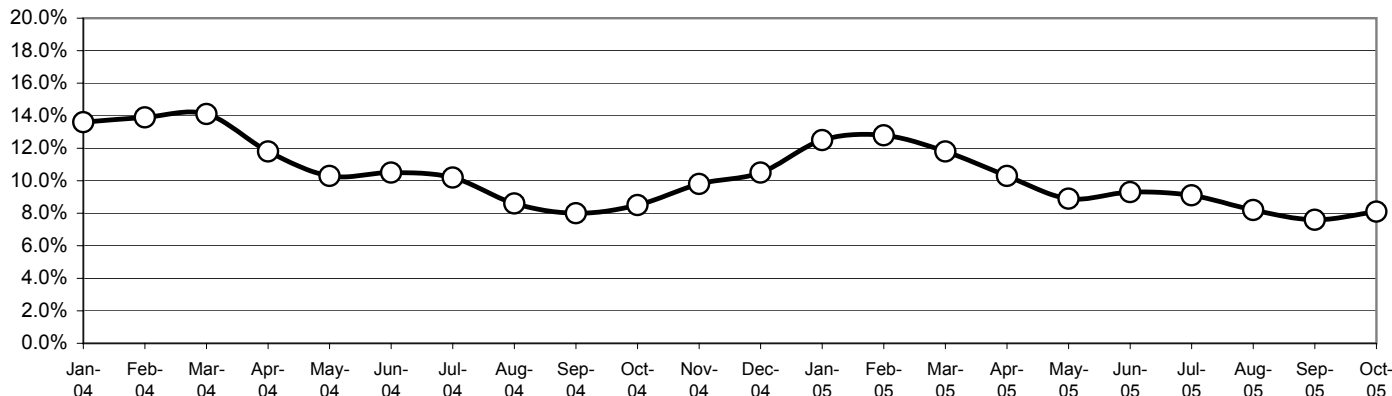
The County continues with one of the highest unemployment rates in the State, ranking 51rd out of 58 counties in the Month of October. The preliminary result is an increase of 0.4 percentage point in the unemployment rate from the revised September rate. This preliminary figure is a decrease of 0.4 percentage point from the unemployment rate of one year ago.

Overall, the County's Civilian Labor Force decreased by 1,100 persons over last month's figure and an increase of 1,700 persons over year ago figures. Industrial employment decreased by 1,700 jobs in October over September's figures and showed an increased of 1,100 jobs over year ago figures.

The Quick Look

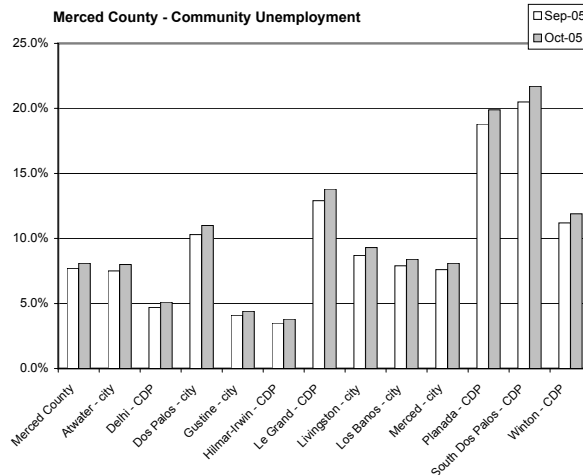
A Merced County Labor Market Review - October 2005

**Merced County Unemployment Rate
2004 - 2005**



Sub County average unemployment rates for the county, cities, and municipalities.

Area Name	Labor Force	Employment	Unemployment	
			Number	Rate
Merced County	101,400	93,200	8,200	8.1%
Atwater City	12,000	11,000	1,000	8.0%
Delhi CDP	4,000	3,800	200	5.1%
Dos Palos City	1,900	1,700	200	11.0%
Gustine City	2,500	2,400	100	4.4%
Hilmar-Irwin CDP	2,800	2,700	100	3.8%
Le Grand CDP	700	600	100	13.8%
Livingston City	5,000	4,500	500	9.3%
Los Banos City	12,600	11,500	1,100	8.4%
Merced City	29,900	27,500	2,400	8.1%
Planada CDP	1,600	1,300	300	19.9%
South Dos Palos CDP	400	300	100	21.7%
Winton CDP	3,700	3,300	400	11.9%



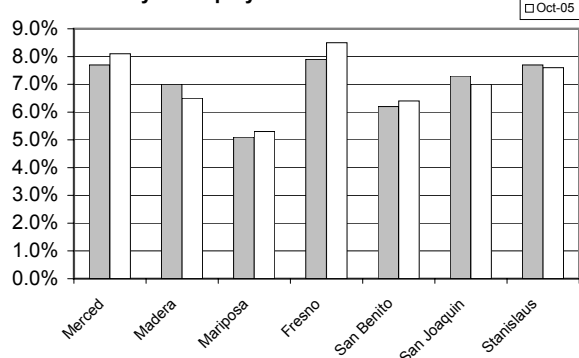
CDP - Census Designated Place

Merced County's workforce has grown over the past 20 years reflecting improvement of the County's economic well being; however, unemployment remains a consistent barrier to greater prosperity. Average unemployment has fluctuated from an annual low of 9.7 percent to an annual high of 17.1 percent.

Seven County Quick Look

County	Rank	Labor Force	Employ	Unemployed	Rate
Merced	51	101,400	93,200	8,200	8.1%
Madera	41	65,400	61,100	4,200	6.5%
Mariposa	25	8,590	8,130	450	5.3%
Fresno	52	408,100	373,400	34,700	8.5%
San Benito	40	25,200	23,600	1,600	6.4%
San Joaquin	43	291,700	271,100	20,500	7.0%
Stanislaus	48	233,800	216,000	17,800	7.6%

Seven County Unemployment Rate





The Quick Look

A Merced County Labor Market Review - November 2005

Welcome to the Merced County labor market review. The Quick Look has been developed by the Department of Workforce Investment staff for the Merced County Local Workforce Investment Board. The data and information is provided by the California Employment Development Department. Questions can be referred to the Department of Workforce Investment, 1880 West Wardrobe Avenue, Merced, CA 95340. Telephone (209) 724-2042. Email: pitd26@co.merced.ca.us

Merced County Data not adjusted for Seasonality	Labor Force and Industrial Employment					
	March 2004 Benchmark				Percent Change	
	Nov 04	Sep 05	Oct 05 Revised	Nov 05 Prelim.	Month	Year
Civilian Labor Force	99,600	102,500	101,700	101,500	-0.2%	1.9%
Civilian Employment	89,800	94,700	93,600	92,300	-1.4%	2.8%
Civilian Unemployment	9,800	7,900	8,200	9,200	12.2%	-6.1%
Civilian Unemployment Rate	9.8%	7.7%	8.0%	9.1%		
(CA Unemployment Rate)	5.8%	4.9%	5.0%	5.1%		
(U.S. Unemployment Rate)	5.2%	4.8%	4.6%	4.8%		
Total, All Industries	68,600	72,600	71,100	70,000	-1.5%	2.0%
Total Farm	10,500	12,700	12,400	10,700	-13.7%	1.9%
Total Nonfarm	58,100	59,900	58,700	59,300	1.0%	2.1%
Total Private	44,500	46,000	44,800	45,000	0.4%	1.1%
Goods Producing	14,800	16,900	15,500	15,500	0.0%	4.7%
Natural Resources and Mining	0	100	0	0		
Construction	3,500	4,000	3,900	3,900	0.0%	11.4%
Manufacturing	11,300	12,800	11,600	11,600	0.0%	2.7%
Durable Goods	1,600	1,600	1,600	1,600	0.0%	0.0%
Nondurable Goods	9,700	11,200	10,000	10,000	0.0%	3.1%
Food Man & Beverage & Tobacco	8,100	9,700	8,500	8,500	0.0%	4.9%
Residual - Textile Mills	1,600	1,500	1,500	1,500	0.0%	-6.3%
Service Providing	43,300	43,000	43,200	43,800	1.4%	1.2%
Private Service Producing	29,700	29,100	29,300	29,500	0.7%	-0.7%
Trade, Transportation and Utilities	11,400	10,900	11,100	11,300	1.8%	-0.9%
Wholesale Trade	1,500	1,400	1,400	1,400	0.0%	-6.7%
Retail Trade	8,000	7,600	7,800	8,000	2.6%	0.0%
Food and Beverage Stores	1,500	1,500	1,500	1,500	0.0%	0.0%
General Merchandise Stores	1,900	1,700	1,800	2,000	11.1%	5.3%
Residual - Miscellaneous Store Retailers	4,600	4,400	4,500	4,500	0.0%	-2.2%
Transportation, Warehousing and Utilities	1,900	1,900	1,900	1,900	0.0%	0.0%
Information	1,400	1,300	1,300	1,300	0.0%	-7.1%
Financial Activities	1,900	1,800	1,800	1,800	0.0%	-5.3%
Finance and Insurance	1,100	1,100	1,100	1,100	0.0%	0.0%
Real Estate and Rental and Leasing	800	700	700	700	0.0%	-12.5%
Professional and Business Services	3,300	3,400	3,300	3,300	0.0%	0.0%
Educational and Health Services	5,400	5,400	5,500	5,500	0.0%	1.9%
Leisure and Hospitality	4,700	4,700	4,700	4,700	0.0%	0.0%
Food Services and Drinking Places	4,000	3,900	3,900	3,900	0.0%	-2.5%
Residual - Arts, Entertainment, and Recreation	700	800	800	800	0.0%	14.3%
Other Services	1,600	1,600	1,600	1,600	0.0%	0.0%
Government	13,600	16,900	13,900	14,300	2.9%	5.1%
Federal Government	800	800	800	800	0.0%	0.0%
State Government	500	900	1,000	1,000	0.0%	100.0%
Local Government	12,300	12,200	12,100	12,500	3.3%	1.6%

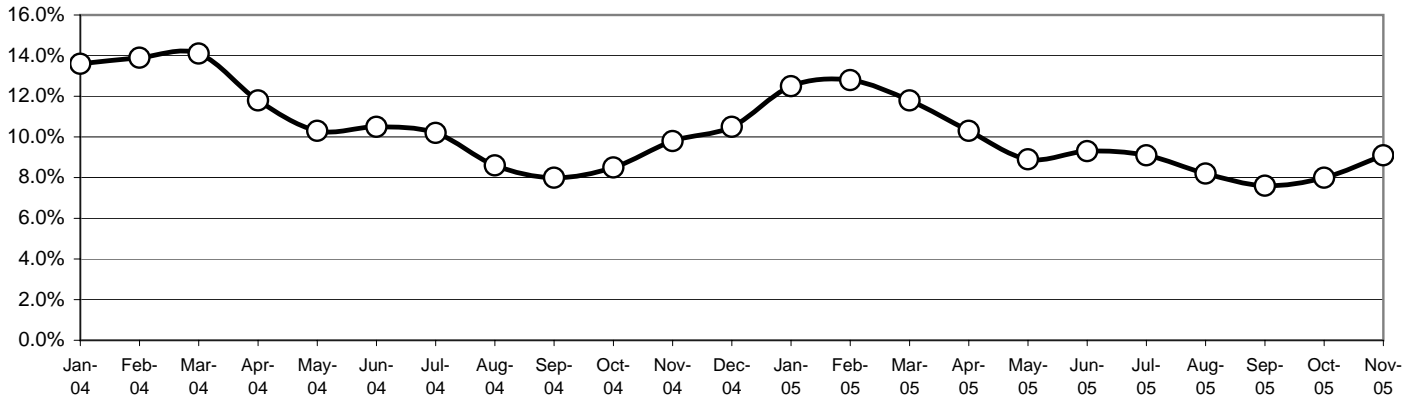
The County continues with one of the highest unemployment rates in the State, ranking 54th out of 58 counties in the month of November. The preliminary result is an increase of 1.1 percentage point in the unemployment rate from the revised October rate. This preliminary figure is a decrease of 0.7 percentage point from the unemployment rate of one year ago.

Overall, the County's Civilian Labor Force decreased by 200 persons over last month's figure and an increase of 1,900 persons over year ago figures. Industrial employment decreased by 1,100 jobs in November over October's figures and showed an increased of 1,400 jobs over year ago figures.

The Quick Look

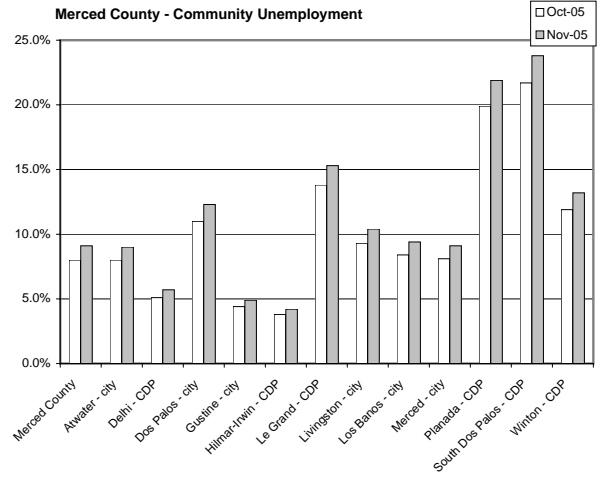
A Merced County Labor Market Review - November 2005

**Merced County Unemployment Rate
2004 - 2005**



Sub County average unemployment rates for the county, cities, and municipalities.

Area Name	Labor Force	Employment	Unemployment	
			Number	Rate
Merced County	101,500	92,300	9,200	9.1%
Atwater City	12,000	10,900	1,100	9.0%
Delhi CDP	3,900	3,700	200	5.7%
Dos Palos City	1,900	1,700	200	12.3%
Gustine City	2,400	2,300	100	4.9%
Hilmar-Irwin CDP	2,700	2,600	100	4.2%
Le Grand CDP	700	600	100	15.3%
Livingston City	4,900	4,400	500	10.4%
Los Banos City	12,600	11,400	1,200	9.4%
Merced City	30,000	27,300	2,700	9.1%
Planada CDP	1,700	1,300	400	21.9%
South Dos Palos CDP	400	300	100	23.8%
Winton CDP	3,800	3,300	500	13.2%



CDP - Census Designated Place

Merced County's workforce has grown over the past 20 years reflecting improvement of the County's economic well being; however, unemployment remains a consistent barrier to greater prosperity. Average unemployment has fluctuated from an annual low of 9.7 percent to an annual high of 17.1 percent.

Seven County Quick Look

County	Rank	Labor Force	Employ	Unemployed	Rate
Merced	54	101,500	92,300	9,200	9.1%
Madera	39	63,100	58,600	4,500	7.2%
Mariposa	32	8,290	7,770	520	6.2%
Fresno	51	401,700	366,300	35,400	8.8%
San Benito	37	25,200	23,400	1,800	7.0%
San Joaquin	41	28,800	266,900	21,100	7.3%
Stanislaus	44	231,900	213,800	18,100	7.8%

Seven County Unemployment Rate

