

**Workforce Investment Board of Merced County
Quality Assurance Committee
Dept of Workforce Investment (Large Conference Room)
1880 W. Wardrobe Ave, Merced, CA
Friday, January 27, 7:30-9:00 a.m.
Meeting Agenda**



www.co.merced.ca.us/wi/wib/wib.html

-
1. Call to Order and Roll Call
 2. Approval of Agenda
 3. Approval of Minutes (November 4, 2005).....
 4. Public Opportunity to Speak
 5. Action Agenda
 - a. Affiliate Site Certification Dave Davis
 - b. Strategic Scorecard Dave Davis
 6. Information/Discussion
 - a. Enterprise Zone Annual Report.....
 - b. Program Summary for Oct/Nov/Dec 2005.....
 - c. Participant Data Reports.....
 7. Chair Comments.....
 8. Next Meeting Date/Time – February 24, 2006, 7:30–9:00 a.m.
 9. Adjourn.....

Workforce Investment Board of Merced County
Quality Assurance Committee
Dept of Workforce Investment Large Conference Rm
1880 W. Wardrobe Ave, Merced, CA
November 4, 2005, 7:30–9:00 a.m.
Meeting Minutes



<http://web.co.merced.ca.us/wi/wib/subcommittees/subcommittees.html>

Members Present: Albert Montejano (Chair), Terry Nichols, Carole Roberds (Vice Chair), Steve Tinetti

Members Absent: Jeremiah Greggains

Staff Present: Bernedette Castaneda, Dave Cramer, Dave Davis, Debby Hoban, Alfredo Mendoza, Robin Redwine, Dick Solis

1. Call to Order and Roll Call: The Chair called the meeting to order at 7:35 a.m. A sign-in sheet was used in lieu of roll call.

2. Approval of Agenda: It was *M/S/C Tinetti/Nichols* to approve the agenda as published.

3. Approve Minutes (July 29, 2005): It was *M/S/C Tinetti/Nichols* to approve the August 26, 2005 minutes.

4. Public Opportunity to Speak: None

5. Action Agenda:

a. Worknet Recertification: Mr. Albert Montejano and Mr. Dave Davis gave an overview on Worknet Certification. The certification included meeting 100% of the Statutory/Compliance requirements, and a score of 33% or 330 using the Baldrige criteria as customized by the Workforce Investment Board (WIB) and using the Baldrige scoring bands. The Merced Worknet Employment Resource Center (ERC) met the Statutory requirements at 100%, and the Performance Excellence criteria was met with a 370. Recertification is for the period of three years.

It was *M/S/C Roberds/Tinetti (abstained Nichols)* that the WIB Quality Assurance Committee accept the Feedback Report, and provide a three-year certification to the Merced Worknet ERC, which has met the Statutory/ Compliance and Performance Excellence criteria as established by the WIB, and forward to the full WIB for approval.

b. Strategic Scorecard: Staff reviewed and discussed measures assigned to the Quality Assurance Committee through the WIB Strategic Scorecard. Mr. Dick Solis give an update on the Business Services Unit. Information on staffing, and present and future activities was provided. Staff reviewed the Program Summary (all locations) for July, August, and September 2005, and final PY 2004/05 Performance Report.

6. Information/Discussion: During the discussion of the Strategic Scorecard the following items were covered.

a. Program Summary for July/Aug/Sept 2005

b. Business Services

"Merced County's Workforce Investment System will keep pace with new growth, the emerging economy, and the ever-changing needs of the employers by creating a better educated, highly skilled workforce, that's capable, prepared, and thoroughly knowledgeable."

c. Participant Data Reports

d. Implications for Action Update: Mr. Davis presented information on three Implications for Action: Education (P-16 Council), the Workforce Housing Taskforce, and Economic Development.

e. Final PY 2004/05 Performance: Covered during the discussion of the Strategic Scorecard.

7. Chair Comments: The Chair congratulated the Leadership Team and Mr. Davis on their work towards the Worknet Recertification.

8. Next Meeting Date & Time: The next meeting will be January 27, 2006, 7:30 a.m., Department of Workforce Investment, Small Conference Room, 1880 W. Wardrobe Ave, Merced.

9. Adjourn: The meeting adjourned at 8:30 a.m.

Minutes prepared by Debby Hoban.

TO: Quality Assurance

DATE: 01/27/06

FROM: WIB Staff

For Action

For Information

For Discussion

SUBJECT: Affiliate Site Certification - the Los Banos Worknet Employment Resource Center

PROPOSED MOTION(S): Begin the process to certify the affiliated Los Banos Worknet Employment Resource Center.

DISCUSSION: The Worknet Employment Resource Center in Los Banos has requested the WIB certify it as a Certified Affiliated One-Stop. The certification process for an affiliated site is simpler than the process for a Comprehensive (Full Service) One Stop.

To be certified, the Los Banos One-Stop Center must receive a minimum score of 100% for the statutory requirements listed below:

Must provide all core services listed in the Workforce Investment Act, as described in Section 134(d)(2) of the Act.

- 1. Determination of whether individuals are eligible to receive assistance.**
- 2. Outreach, intake, and orientation to the information and other services available.**
- 3. Initial assessment of skill levels, aptitudes, and supportive services needs.**
- 4. Job search placement and assistance, and where appropriate, career counseling.**
- 5. Employment statistics information for local, regional and national labor market areas including job vacancy listings, information on job skills necessary to obtain the jobs described in the clause and local information relating to local occupations in demand and the earnings and skill requirements for such occupations.**
- 6. Provision of performance information and program cost information on eligible providers of training services.**
- 7. Provision of information regarding how the local area is performing on the local performance measures.**
- 8. Provision of accurate information relating to the availability of supportive services, including childcare and transportation available in the local area.**
- 9. Information regarding filing claims for unemployment compensation.**
- 10. Assistance in establishing eligibility for welfare-to-work; and programs of financial aid assistance for training and education programs.**

11. Follow-up services, including counseling regarding the workplace, for participants in the workplace investment activities who are placed in unsubsidized employment, for not less than 12 months.

A written application will be received for evaluation. A Site Visit is recommended by staff. It is suggested that the site visit be combined with a future Quality Assurance Committee meeting. If certification is granted, the length of certification will be from two to three years, based on the Committee's evaluation.

ATTACHMENT(S): N/A

TO: WIB Quality Assurance Committee

DATE: 11/04/05

FROM: WIB Staff

For Action

For Information

For Discussion

SUBJECT: Workforce Investment Board (WIB) Strategic Scorecard

PROPOSED MOTION(S): Review and discuss those measures assigned to Quality Assurance through the WIB Strategic Scorecard.

DISCUSSION: The WIB Strategic Scorecard was formally adopted October 25, 2004 and updated April 29, 2005. The Quality Assurance Committee has responsibility for the following measurements:

Customer Perspective

- **Business Customer Satisfaction**
- **Jobseeker Customer Satisfaction**

Internal Operations/Organizational Effectiveness

- **Program Accountability**

Learning and Innovation

- **Progress in Preparation for Worknet Recertification**

**ATTACHMENT(S):
Strategic Scorecard**

MERCED COUNTY WORKFORCE INVESTMENT BOARD STRATEGIC SCORECARD

WIB GOALS

Goal # I Train and attract adaptable workers to fill industry needs.

Goal # II Influence the K-12 education system to design and implement strategies that provide students knowledge of employee skills and attitudes and develop metrics to assure success.

Goal # III Become an active advocacy voice and take political action on workforce development issues at the local, state, and national levels.

Measurement Category: Customer Perspective

Measure/Indicator	Metrics	Method	How Often Review	Responsible WIB Committee
1. Business Customer Satisfaction				
a. Employer Needs Are Being Met	80% Satisfaction Rate & Increase in the # of Employers using Worknet Services	Face to face 10 Question Survey of 30 Employers (Coordinated with Econ. Dev., Chambers, etc and conducted during regular visit with employer & include WIB members)	Annually (July)	QA & BSU
b. Are the Right Industries Targeted • Economic Development Targeted Industries • Growth Industries	Compare targets and adjust industry focus, if necessary	Review Industries adopted from the 2003 MCEDSP and LMI (Growth Industries & Early Warning Data (in development))	Biannually	PP&D & the Economic Development Action Team
2. Job Seeker Customer Satisfaction				
a. Job Seeker Needs Are Being Met	90%	Customer Satisfaction Surveys	Monthly	QA
b. Input from Customers Is Used To Improve Services	Rating to meet or exceed	One Stop Management	Annually (Jan)	QA

MERCED COUNTY WORKFORCE INVESTMENT BOARD STRATEGIC SCORECARD

3. Workforce Development Advocacy/Awareness	<p># Of Face to Face Meetings compared to previous year</p> <p># Of Written Communications compared to previous year</p> <p>Voting record of Legislators</p> <p>Positive impact to Support Local Control</p> <p>Stable or increased WIA Funding</p>	<p>Meetings with Legislators</p> <p>Written Communication with Legislators (requesting a response from them)</p> <p>Invitations to WIB Meetings</p> <p>Invitations to Worknet, i.e., for a tour, Chamber Mixer, etc.</p>	Biannually	Executive

MERCED COUNTY WORKFORCE INVESTMENT BOARD STRATEGIC SCORECARD

Measurement Category: Internal Operations/Organizational Effectiveness

Measure/Indicator	Metrics	Method	How Often Review	Responsible WIB Committee
1. Program Accountability:				
a. Plan vs. Actual Participant Activity				
• Numbers	Planned vs. Actual	Participant Reports	Quarterly	QA
• Demographics White – 46.7% Hispanic – 32.4% Asian - 6.8% African Amer _ 3.8% Amer Indian _ 1.2% Pacific Isl _ 0.2% Others _ 8.9%	Participants vs. Merced Co. Demographics	Participant Reports	Biannually (Jul/ Jan)	QA
• Performance Measures	Attain 80% level on Goals	Performance Reports	Quarterly (1-Nov 2-Feb 3-May 4-Oct)	QA
b. Report Results:				
• Audits	Zero Findings	County Audit	Annually (May)	QA
• Monitoring	Zero Findings	EDD Monitoring WI Monitoring	Annually Biannually	QA
• Youth Quarterly Program Reports				
Out-of-School Youth	Acceptable Progress based on contract timeline	Report from MCOE	Quarterly	YC
Younger Youth	Acceptable Progress based on contract timeline	Report from MCOE	Quarterly	YC

MERCED COUNTY WORKFORCE INVESTMENT BOARD STRATEGIC SCORECARD

<p>c. Resources are Allocated Appropriately:</p> <ul style="list-style-type: none"> • Pilot Program in a specific Industry cluster (offering career ladders or move up strategy) • Quality Controls • Productivity 	Review results of training job and placements in the industry	Identify and select an Industry cluster	Biannually	PP&D
	Improved Scores	Customer Satisfaction Data	Yearly	QA
	Attainment	Performance Measures	Yearly	QA

Measurement Category: Financial/Market Perspective

Measure/Indicator	Metric	Method	How Often Review	Responsible WIB Committee
<p>1. Expenditures including:</p> <ul style="list-style-type: none"> • Obligations • Accruals (Expenses) • Encumbrances • By funding source • By service • Plan vs. Actual 	<p>80% of Current Year Allocation Obligated by End of the Year</p> <p>70% Expended of Available Funds (Carryover plus Allocation) by the End of the Year</p>	Fiscal Reports	Monthly	Finance
<p>2. Revenue & Resources:</p> <p>a. Grants</p>	<p>#s Applied for and Source</p> <p>#s Received and \$\$ Amounts</p>	<p>WI Report</p> <p>WI Report</p>	<p>Quarterly</p> <p>Quarterly</p>	<p>Finance</p> <p>Finance</p>
<p>b. Revenue Generation</p>	<p># of Sources and Amount of \$\$</p>	<p>WI Report</p>	<p>Quarterly</p>	<p>Finance</p>

MERCED COUNTY WORKFORCE INVESTMENT BOARD STRATEGIC SCORECARD

Measurement Category: Learning and Innovation

Measure/Indicator	Metric	Method	How Often Review	Responsible WIB Committee
1. Progress in Preparation for Worknet Recertification	On Schedule	Report from Worknet LT on Time Line	Bimonthly	QA
2. Influence the Workforce Investment System				
a. Education	Report on Activity	Participate on the P-16 Council	Quarterly	PP&D
b. Economic Development/Castle Development	New Jobs Created	Reports by MCEDCO, BEO and EDAC.	Quarterly	PP&D
	Jobs Lost	Reports on Rapid Response activity		
c. Workforce Housing	# of New Units Built # of building permits issued for workforce housing	Support the WIB Policy on Workforce Housing	Yearly	Executive

Glossary

BSU - Dept. of WI Business Services Unit

Executive - WIB Executive Committee

Finance - WIB Finance Committee

PP&D - WIB Program Planning & Development Committee

QA - WIB Quality Assurance Committee

YC - Youth Council

TO: Quality Assurance

DATE: 01/27/06

FROM: WIB Staff

For Action

For Information

For Discussion

SUBJECT: LAMBRA/Enterprise Zone Annual Report 2005

PROPOSED MOTION(S): Information only.

DISCUSSION: The 2005 LAMBRA/Enterprise Zone Annual Report is attached.

ATTACHMENT(S): Report

Eligibility Legend

AFDC (Aid to Families with Dependant Children)	AFDC
Collecting or Exhausted Unemployment Benefits	UI
Disabled, Enrolled In/Completed State Rehab Plan	DisVet
Economically Disadvantaged	ED
Ex-Offender	EX
FS (Food Stamps)	FS
GA (General Assistance)	GA
Homeless	HL
Income Eligible	IE
JTPA (Jobs Training Partnership Act)	JTPA
Native American	NA
None	None
Pending	Pend
Self Employed & Unemployed	SUI
Service-connected Disabled Veteran	DisVet
SSI (Supplemental Security Income)	SSI
TANF (Temporary Aid to Needy Families)	TANF
TEA (Targeted Employment Area)	TEA
Unemployed 15-26 Weeks	15/26
Unemployed Civilian, Dept. of Defense	CDOD
Unemployed Clean Air Act	CAA
Unemployed due to Chronic Seasonal Unemployment	Seas
Unemployed Massive Layoff	Layoff
Unemployed Military Closure/Realignment	Military
Unemployed Plant Closure	Clos
Veteran who left military within last 48 months	Vet48
Vietnam Vet	Vvet
Welfare to Work/CalWORKs	WtW
WIA Enrolled (Workforce Investment Act)	WIA
WOTC (Work Opportunity Tax Credit)	WOTC

Enterprise Zone Annual Report - 2005

Zone Location: Atwater

Business Name: H.R.P., Inc

Checklists Received	Vouchered	Ineligible	UI	EX	FS	None	Pend	SSI	TANF	TEA	15/26	Layoff	Vet48	Vvet	WtW	WIA	WOTC
2	2			2													

Business Name: MB Sports

Checklists Received	Vouchered	Ineligible	UI	EX	FS	None	Pend	SSI	TANF	TEA	15/26	Layoff	Vet48	Vvet	WtW	WIA	WOTC
17	12	5				5			1	11							

Business Name: Pacific Concrete Specialties, I

Checklists Received	Vouchered	Ineligible	UI	EX	FS	None	Pend	SSI	TANF	TEA	15/26	Layoff	Vet48	Vvet	WtW	WIA	WOTC
1	1			1													

Business Name: West-Mark

Checklists Received	Vouchered	Ineligible	UI	EX	FS	None	Pend	SSI	TANF	TEA	15/26	Layoff	Vet48	Vvet	WtW	WIA	WOTC
5		5				5											

Summary for Atwater (4 Businesses)

Sum	25	15	10		3	10			1	11							
------------	----	----	----	--	---	----	--	--	---	----	--	--	--	--	--	--	--

Zone Location: Livingston

Business Name: Foster Farms

Checklists Received	Vouchered	Ineligible	UI	EX	FS	None	Pend	SSI	TANF	TEA	15/26	Layoff	Vet48	Vvet	WtW	WIA	WOTC
7	2	5				5				2							

Business Name: Sensient Dehydrated Flavors

Checklists Received	Vouchered	Ineligible	UI	EX	FS	None	Pend	SSI	TANF	TEA	15/26	Layoff	Vet48	Vvet	WtW	WIA	WOTC
40	32	8	5	2	4	8			2	15	3					1	

Summary for Livingston (2 Businesses)

Sum 47 34 13 5 2 4 13 2 17 3 1

Zone Location: Merced City

Business Name: Anthony Abbate dba McDonal

<i>Checklists Received</i>	<i>Vouchered</i>	<i>Ineligible</i>	<i>UI</i>	<i>EX</i>	<i>FS</i>	<i>None</i>	<i>Pend</i>	<i>SSI</i>	<i>TANF</i>	<i>TEA</i>	<i>15/26</i>	<i>Layoff</i>	<i>Vet48</i>	<i>Vvet</i>	<i>WtW</i>	<i>WIA</i>	<i>WOTC</i>
9	8	1			1	1				4	1						2

Business Name: Bear Creek Tile Comp.

<i>Checklists Received</i>	<i>Vouchered</i>	<i>Ineligible</i>	<i>UI</i>	<i>EX</i>	<i>FS</i>	<i>None</i>	<i>Pend</i>	<i>SSI</i>	<i>TANF</i>	<i>TEA</i>	<i>15/26</i>	<i>Layoff</i>	<i>Vet48</i>	<i>Vvet</i>	<i>WtW</i>	<i>WIA</i>	<i>WOTC</i>
1	1									1							

Business Name: Capital Corp of the West

<i>Checklists Received</i>	<i>Vouchered</i>	<i>Ineligible</i>	<i>UI</i>	<i>EX</i>	<i>FS</i>	<i>None</i>	<i>Pend</i>	<i>SSI</i>	<i>TANF</i>	<i>TEA</i>	<i>15/26</i>	<i>Layoff</i>	<i>Vet48</i>	<i>Vvet</i>	<i>WtW</i>	<i>WIA</i>	<i>WOTC</i>
3	3		1							2							

Business Name: Costco Wholesale

<i>Checklists Received</i>	<i>Vouchered</i>	<i>Ineligible</i>	<i>UI</i>	<i>EX</i>	<i>FS</i>	<i>None</i>	<i>Pend</i>	<i>SSI</i>	<i>TANF</i>	<i>TEA</i>	<i>15/26</i>	<i>Layoff</i>	<i>Vet48</i>	<i>Vvet</i>	<i>WtW</i>	<i>WIA</i>	<i>WOTC</i>
5	3	2				2				3							

Business Name: County Bank

<i>Checklists Received</i>	<i>Vouchered</i>	<i>Ineligible</i>	<i>UI</i>	<i>EX</i>	<i>FS</i>	<i>None</i>	<i>Pend</i>	<i>SSI</i>	<i>TANF</i>	<i>TEA</i>	<i>15/26</i>	<i>Layoff</i>	<i>Vet48</i>	<i>Vvet</i>	<i>WtW</i>	<i>WIA</i>	<i>WOTC</i>
20	20		3		1					9	2			1	4		

Business Name: Courtesy Auto Center

<i>Checklists Received</i>	<i>Vouchered</i>	<i>Ineligible</i>	<i>UI</i>	<i>EX</i>	<i>FS</i>	<i>None</i>	<i>Pend</i>	<i>SSI</i>	<i>TANF</i>	<i>TEA</i>	<i>15/26</i>	<i>Layoff</i>	<i>Vet48</i>	<i>Vvet</i>	<i>WtW</i>	<i>WIA</i>	<i>WOTC</i>
26	23	3	1	10	3	3				7	1		1				

Business Name: Fineline Industries, Inc.

<i>Checklists Received</i>	<i>Vouchered</i>	<i>Ineligible</i>	<i>UI</i>	<i>EX</i>	<i>FS</i>	<i>None</i>	<i>Pend</i>	<i>SSI</i>	<i>TANF</i>	<i>TEA</i>	<i>15/26</i>	<i>Layoff</i>	<i>Vet48</i>	<i>Vvet</i>	<i>WtW</i>	<i>WIA</i>	<i>WOTC</i>
26	18	8		2	1	8				13	2						

Business Name:	<i>Fluetsch & Busby Insurance</i>																		
	Checklists Received	Vouchered	Ineligible	UI	EX	FS	None	Pend	SSI	TANF	TEA	15/26	Layoff	Vet48	Vvet	WtW	WIA	WOTC	
	2	2									1							1	

Business Name:	<i>Guardco Security Services</i>																		
	Checklists Received	Vouchered	Ineligible	UI	EX	FS	None	Pend	SSI	TANF	TEA	15/26	Layoff	Vet48	Vvet	WtW	WIA	WOTC	
	5	5									3						2		

Business Name:	<i>Guardco Security Services, L.</i>																		
	Checklists Received	Vouchered	Ineligible	UI	EX	FS	None	Pend	SSI	TANF	TEA	15/26	Layoff	Vet48	Vvet	WtW	WIA	WOTC	
	41	36	5			15	5		1	2	15	1					2		

Business Name:	<i>Hollywood Video #402442</i>																		
	Checklists Received	Vouchered	Ineligible	UI	EX	FS	None	Pend	SSI	TANF	TEA	15/26	Layoff	Vet48	Vvet	WtW	WIA	WOTC	
	1	1				1													

Business Name:	<i>Home Depot</i>																		
	Checklists Received	Vouchered	Ineligible	UI	EX	FS	None	Pend	SSI	TANF	TEA	15/26	Layoff	Vet48	Vvet	WtW	WIA	WOTC	
	18	7	11			1	11				6								

Business Name:	<i>Huwaidi's Family Dental</i>																		
	Checklists Received	Vouchered	Ineligible	UI	EX	FS	None	Pend	SSI	TANF	TEA	15/26	Layoff	Vet48	Vvet	WtW	WIA	WOTC	
	2	2		1							1								

Business Name:	<i>JSA Restaurant Inc dba McDo</i>																		
	Checklists Received	Vouchered	Ineligible	UI	EX	FS	None	Pend	SSI	TANF	TEA	15/26	Layoff	Vet48	Vvet	WtW	WIA	WOTC	
	23	23			1	4					17						1		

Business Name:	<i>La Nita's Inc</i>																		
	Checklists Received	Vouchered	Ineligible	UI	EX	FS	None	Pend	SSI	TANF	TEA	15/26	Layoff	Vet48	Vvet	WtW	WIA	WOTC	
	8	7	1				1				7								

Business Name:	<i>Label Technology Inc</i>																		
	Checklists Received	Vouchered	Ineligible	UI	EX	FS	None	Pend	SSI	TANF	TEA	15/26	Layoff	Vet48	Vvet	WtW	WIA	WOTC	
	25	14	11	5	1		11				5	3							

Business Name:	<i>Malibu Boats West, Inc.</i>																		
	Checklists Received	Vouchered	Ineligible	UI	EX	FS	None	Pend	SSI	TANF	TEA	15/26	Layoff	Vet48	Vvet	WtW	WIA	WOTC	
	49	28	21	3	3	6	21				9	2	1	1			3		

Business Name:	<i>McAuley Motors, Inc.</i>																		
	Checklists Received	Vouchered	Ineligible	UI	EX	FS	None	Pend	SSI	TANF	TEA	15/26	Layoff	Vet48	Vvet	WtW	WIA	WOTC	
	3	3									2				1				

Business Name:	<i>McLane Pacific</i>																		
	Checklists Received	Vouchered	Ineligible	UI	EX	FS	None	Pend	SSI	TANF	TEA	15/26	Layoff	Vet48	Vvet	WtW	WIA	WOTC	
	7	7		2		3					1	1							

Business Name:	<i>McLane Sun East, Inc #3804</i>																		
	Checklists Received	Vouchered	Ineligible	UI	EX	FS	None	Pend	SSI	TANF	TEA	15/26	Layoff	Vet48	Vvet	WtW	WIA	WOTC	
	11	11				6					1			1			3		

Business Name:	<i>Merced VW Kia Daewoo</i>																		
	Checklists Received	Vouchered	Ineligible	UI	EX	FS	None	Pend	SSI	TANF	TEA	15/26	Layoff	Vet48	Vvet	WtW	WIA	WOTC	
	4	3	1				1				2						1		

Business Name:	<i>Modern Air Mechanical</i>																		
	Checklists Received	Vouchered	Ineligible	UI	EX	FS	None	Pend	SSI	TANF	TEA	15/26	Layoff	Vet48	Vvet	WtW	WIA	WOTC	
	5	4	1	1			1				2			1					

Business Name:	<i>O'Keeffe's, Inc.</i>																		
	Checklists Received	Vouchered	Ineligible	UI	EX	FS	None	Pend	SSI	TANF	TEA	15/26	Layoff	Vet48	Vvet	WtW	WIA	WOTC	
	8	7	1		3		1				3						1		

Business Name:	<i>Pacheco Restaurants Inc dba</i>																		
	<i>Checklists Received</i>	<i>Vouchered</i>	<i>Ineligible</i>	<i>UI</i>	<i>EX</i>	<i>FS</i>	<i>None</i>	<i>Pend</i>	<i>SSI</i>	<i>TANF</i>	<i>TEA</i>	<i>15/26</i>	<i>Layoff</i>	<i>Vet48</i>	<i>Vvet</i>	<i>WtW</i>	<i>WIA</i>	<i>WOTC</i>	
	27	26	1		2		1				24								

Business Name:	<i>Parkers Hardware</i>																		
	<i>Checklists Received</i>	<i>Vouchered</i>	<i>Ineligible</i>	<i>UI</i>	<i>EX</i>	<i>FS</i>	<i>None</i>	<i>Pend</i>	<i>SSI</i>	<i>TANF</i>	<i>TEA</i>	<i>15/26</i>	<i>Layoff</i>	<i>Vet48</i>	<i>Vvet</i>	<i>WtW</i>	<i>WIA</i>	<i>WOTC</i>	
	1	1				1													

Business Name:	<i>Pep Boys #649</i>																		
	<i>Checklists Received</i>	<i>Vouchered</i>	<i>Ineligible</i>	<i>UI</i>	<i>EX</i>	<i>FS</i>	<i>None</i>	<i>Pend</i>	<i>SSI</i>	<i>TANF</i>	<i>TEA</i>	<i>15/26</i>	<i>Layoff</i>	<i>Vet48</i>	<i>Vvet</i>	<i>WtW</i>	<i>WIA</i>	<i>WOTC</i>	
	1	1									1								

Business Name:	<i>Quebecor World Inc</i>																		
	<i>Checklists Received</i>	<i>Vouchered</i>	<i>Ineligible</i>	<i>UI</i>	<i>EX</i>	<i>FS</i>	<i>None</i>	<i>Pend</i>	<i>SSI</i>	<i>TANF</i>	<i>TEA</i>	<i>15/26</i>	<i>Layoff</i>	<i>Vet48</i>	<i>Vvet</i>	<i>WtW</i>	<i>WIA</i>	<i>WOTC</i>	
	20	16	4		1	3	4				7	4						1	

Business Name:	<i>Safeway #8245</i>																		
	<i>Checklists Received</i>	<i>Vouchered</i>	<i>Ineligible</i>	<i>UI</i>	<i>EX</i>	<i>FS</i>	<i>None</i>	<i>Pend</i>	<i>SSI</i>	<i>TANF</i>	<i>TEA</i>	<i>15/26</i>	<i>Layoff</i>	<i>Vet48</i>	<i>Vvet</i>	<i>WtW</i>	<i>WIA</i>	<i>WOTC</i>	
	7	6	1		6		1												

Business Name:	<i>Salmeri Insurance Agency</i>																		
	<i>Checklists Received</i>	<i>Vouchered</i>	<i>Ineligible</i>	<i>UI</i>	<i>EX</i>	<i>FS</i>	<i>None</i>	<i>Pend</i>	<i>SSI</i>	<i>TANF</i>	<i>TEA</i>	<i>15/26</i>	<i>Layoff</i>	<i>Vet48</i>	<i>Vvet</i>	<i>WtW</i>	<i>WIA</i>	<i>WOTC</i>	
	2	2									2								

Business Name:	<i>San Joaquin Glass</i>																		
	<i>Checklists Received</i>	<i>Vouchered</i>	<i>Ineligible</i>	<i>UI</i>	<i>EX</i>	<i>FS</i>	<i>None</i>	<i>Pend</i>	<i>SSI</i>	<i>TANF</i>	<i>TEA</i>	<i>15/26</i>	<i>Layoff</i>	<i>Vet48</i>	<i>Vvet</i>	<i>WtW</i>	<i>WIA</i>	<i>WOTC</i>	
	4							4											

Business Name:	<i>Save Mart Supermarkets</i>																		
	<i>Checklists Received</i>	<i>Vouchered</i>	<i>Ineligible</i>	<i>UI</i>	<i>EX</i>	<i>FS</i>	<i>None</i>	<i>Pend</i>	<i>SSI</i>	<i>TANF</i>	<i>TEA</i>	<i>15/26</i>	<i>Layoff</i>	<i>Vet48</i>	<i>Vvet</i>	<i>WtW</i>	<i>WIA</i>	<i>WOTC</i>	
	3	3									2							1	

Business Name:	Scholle Corporation																		
	Checklists Received	Vouchered	Ineligible	UI	EX	FS	None	Pend	SSI	TANF	TEA	15/26	Layoff	Vet48	Vvet	WtW	WIA	WOTC	
	1	1										1							

Business Name:	Sierra Beverage Company																		
	Checklists Received	Vouchered	Ineligible	UI	EX	FS	None	Pend	SSI	TANF	TEA	15/26	Layoff	Vet48	Vvet	WtW	WIA	WOTC	
	1	1												1					

Business Name:	Tim Razzari Dodge																		
	Checklists Received	Vouchered	Ineligible	UI	EX	FS	None	Pend	SSI	TANF	TEA	15/26	Layoff	Vet48	Vvet	WtW	WIA	WOTC	
	7	2	5	1			5					1							

Business Name:	Tim Razzari Ford																		
	Checklists Received	Vouchered	Ineligible	UI	EX	FS	None	Pend	SSI	TANF	TEA	15/26	Layoff	Vet48	Vvet	WtW	WIA	WOTC	
	41	29	12	8		4	12		1	2	6	6					2		

Business Name:	Tim Razzari Nissan																		
	Checklists Received	Vouchered	Ineligible	UI	EX	FS	None	Pend	SSI	TANF	TEA	15/26	Layoff	Vet48	Vvet	WtW	WIA	WOTC	
	3	3									2	1							

Business Name:	Tomopco, Inc. #606																		
	Checklists Received	Vouchered	Ineligible	UI	EX	FS	None	Pend	SSI	TANF	TEA	15/26	Layoff	Vet48	Vvet	WtW	WIA	WOTC	
	5	5									5								

Business Name:	Trans County Service Co																		
	Checklists Received	Vouchered	Ineligible	UI	EX	FS	None	Pend	SSI	TANF	TEA	15/26	Layoff	Vet48	Vvet	WtW	WIA	WOTC	
	2	1	1				1				1								

Business Name:	Trans County Title																		
	Checklists Received	Vouchered	Ineligible	UI	EX	FS	None	Pend	SSI	TANF	TEA	15/26	Layoff	Vet48	Vvet	WtW	WIA	WOTC	
	5	3	2				2								1	1	1		

Business Name:	Valley Prescription Pharmacy																		
	Checklists Received	Vouchered	Ineligible	UI	EX	FS	None	Pend	SSI	TANF	TEA	15/26	Layoff	Vet48	Vvet	WtW	WIA	WOTC	
	1	1																1	

Business Name:	Wal*Mart WL-2039																		
	Checklists Received	Vouchered	Ineligible	UI	EX	FS	None	Pend	SSI	TANF	TEA	15/26	Layoff	Vet48	Vvet	WtW	WIA	WOTC	
	18	17	1			1	1				13	1					2		

Business Name:	Wellmade Metal Products																		
	Checklists Received	Vouchered	Ineligible	UI	EX	FS	None	Pend	SSI	TANF	TEA	15/26	Layoff	Vet48	Vvet	WtW	WIA	WOTC	
	27	27				1					7							19	

Business Name:	Wells Fargo Bank																		
	Checklists Received	Vouchered	Ineligible	UI	EX	FS	None	Pend	SSI	TANF	TEA	15/26	Layoff	Vet48	Vvet	WtW	WIA	WOTC	
	3	3									3								

Business Name:	WLMD dba Wellmade Produc																		
	Checklists Received	Vouchered	Ineligible	UI	EX	FS	None	Pend	SSI	TANF	TEA	15/26	Layoff	Vet48	Vvet	WtW	WIA	WOTC	
	11	11			1						9							1	

Summary for Merced City (44 Businesses)

Sum	492	395	93	26	30	52	93	4	2	7	194	26	1	5	3	23	6	20
------------	-----	-----	----	----	----	----	----	---	---	---	-----	----	---	---	---	----	---	----

Zone Location: Merced County

Business Name:	Central Valley Concrete																		
	Checklists Received	Vouchered	Ineligible	UI	EX	FS	None	Pend	SSI	TANF	TEA	15/26	Layoff	Vet48	Vvet	WtW	WIA	WOTC	
	10	4	6		4		6												

Business Name:	N & S Tractor Company																		
	Checklists Received	Vouchered	Ineligible	UI	EX	FS	None	Pend	SSI	TANF	TEA	15/26	Layoff	Vet48	Vvet	WtW	WIA	WOTC	
	8	6	2	1		2	2				1					1	1		

Business Name: Pick N Pull

<i>Checklists Received</i>	<i>Vouchered</i>	<i>Ineligible</i>	<i>UI</i>	<i>EX</i>	<i>FS</i>	<i>None</i>	<i>Pend</i>	<i>SSI</i>	<i>TANF</i>	<i>TEA</i>	<i>15/26</i>	<i>Layoff</i>	<i>Vet48</i>	<i>Vvet</i>	<i>WtW</i>	<i>WIA</i>	<i>WOTC</i>
1	1															1	

Business Name: Richwood Meat Company Inc

<i>Checklists Received</i>	<i>Vouchered</i>	<i>Ineligible</i>	<i>UI</i>	<i>EX</i>	<i>FS</i>	<i>None</i>	<i>Pend</i>	<i>SSI</i>	<i>TANF</i>	<i>TEA</i>	<i>15/26</i>	<i>Layoff</i>	<i>Vet48</i>	<i>Vvet</i>	<i>WtW</i>	<i>WIA</i>	<i>WOTC</i>
7	7				3					3					1		

Business Name: Save Mart Supermarkets dba

<i>Checklists Received</i>	<i>Vouchered</i>	<i>Ineligible</i>	<i>UI</i>	<i>EX</i>	<i>FS</i>	<i>None</i>	<i>Pend</i>	<i>SSI</i>	<i>TANF</i>	<i>TEA</i>	<i>15/26</i>	<i>Layoff</i>	<i>Vet48</i>	<i>Vvet</i>	<i>WtW</i>	<i>WIA</i>	<i>WOTC</i>
3	3										1				2		

Summary for Merced County (5 Businesses)

Sum	29	21	8	1	4	5	8			5					4	2		
Grand Total	593	465	124	32	39	61	124	4	2	10	227	29	1	5	3	28	8	20

Lambra Annual Report - 2005

Location: Merced County

Business Name: Cingular Wireless

	<i>Received</i>	<i>Vourchered</i>	<i>Ineligible</i>	<i>UI</i>	<i>FS</i>	<i>None</i>	<i>15/26</i>	<i>WtW</i>	<i>WIA</i>
	21	18	3	8	3	3	3	2	2

Business Name: Hoffman Electronic Systems

	<i>Received</i>	<i>Vourchered</i>	<i>Ineligible</i>	<i>UI</i>	<i>FS</i>	<i>None</i>	<i>15/26</i>	<i>WtW</i>	<i>WIA</i>
	4	3	1		2	1		1	

Summary for 'location' = Merced County (2 Businesses)

Sum 25 21 4 8 5 4 3 3 2

Grand Total



Worknet Customer Service & Satisfaction Report For All Locations

OCTOBER 2005

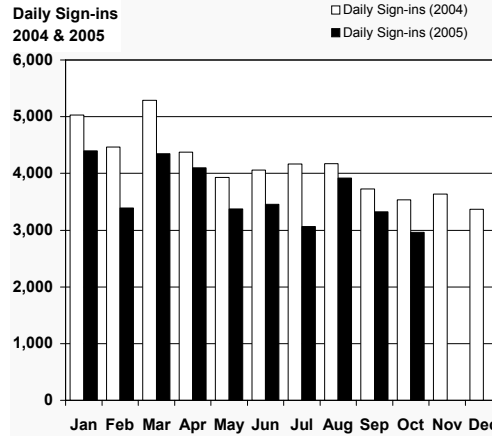
Merced County Department of Workforce Investment

Daily Sign-ins

Daily sign-ins for October totaled 2,966. Down 358 from the previous month and down 570 from October 2004. Daily sign-ins for the month of October is below the 5 year average.

October's 5 year average: 3,426

2004 annual average: 4,146

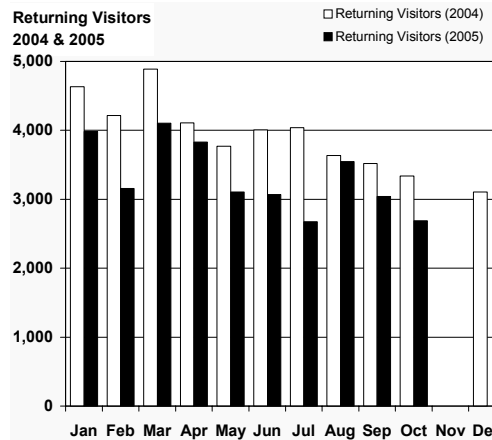


Return Visits

Return visits for October totaled 2,966. Down 350 from the previous month and down 649 from October 2004. Return visits for the month of October is below the 5 year average.

October's 5 year average: 3191

2004 annual average: 3,605

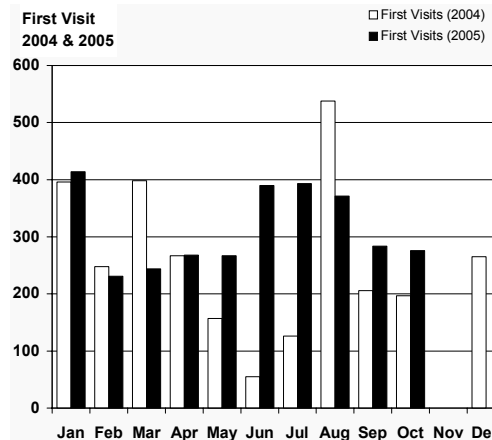


First Visits

First Visits for October totaled 276. Down 8 from the previous month and up 79 from October 2004. First visits for the month of October exceeds the 5 year average.

October 5 year average: 235

2004 annual average: 238



Contents

<i>How did you hear about us?</i>	2
<i>Would you refer our services to others?</i>	2
<i>Customer Satisfaction</i>	3
<i>How our customers used our services</i>	3
<i>Summary Data - All Locations</i>	4
<i>Summary Data - Individual Locations</i>	5

Customer Flow for October 2005

All Locations

- On average, Tuesdays were the busiest days of the week. Averaging 169 clients per day. (Weekly Average: 757 customers)

Merced

- Tuesdays were the busiest day of the week, with an average of 107 clients per day. (Weekly Average: 443 customers).

Los Banos

- Tuesdays were the busiest day of the week, with an average of 56 clients per day (Weekly Average: 284 customers).

Livingston

- Mondays were the busiest day of the week, with an average of 9 per day (Weekly Average: 30 customers).



**Marketing advertisements for
September 2005**

* Valley Values
09/1, 15, 29/2005

* The Bus
Worknet signs inside buses

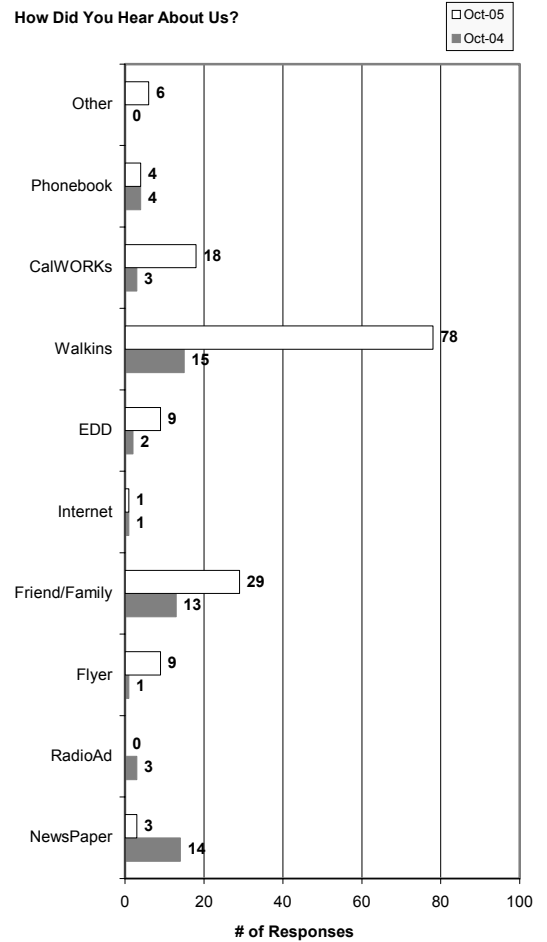
How did you hear about us?

One hundred fifty-seven customers responded to this question in October.

Seventy-eight customers responded with Walk-in as the most frequent response. Friend or Family was the next most frequent response.

We change the method of collecting the data in November 2004 to capture more responses. Due to this change, prior year data is not directly comparable. When comparing current data with prior year data, compare only the rank of the response.

How Did You Hear About Us?



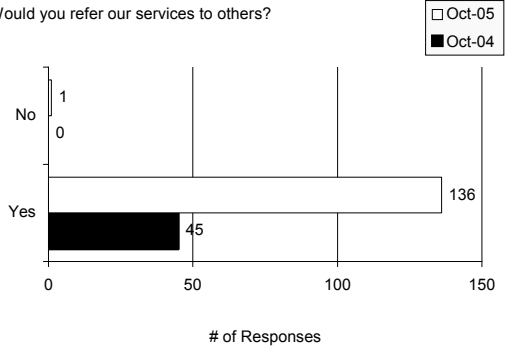
99.3 percent of our customer would refer our services to others

Would you refer our services to others?

Of those responding to this question, 99.3 percent of our customers would refer our services to others.

PY 03/04 annual average: 98.6%
PY 04/05 annual average: 97.3%

Would you refer our services to others?





**Worknet
Customer Service & Satisfaction Report
For All Locations**

OCTOBER 2005

Merced County Department of Workforce Investment

Page 3

Customer Satisfaction



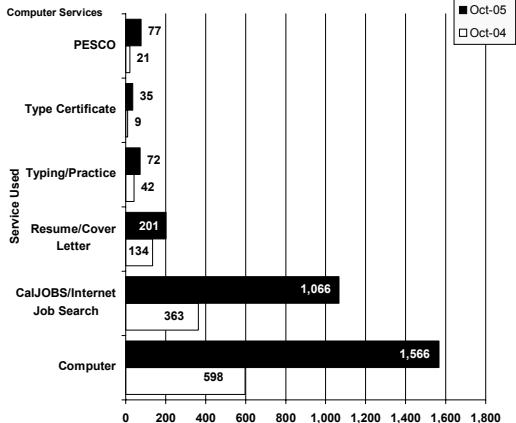
Customer Satisfaction Ratings

Customer satisfaction questions received 156 responses from our customers in October. These questions received ratings between 9.80 and 9.84, with “Did you get the information you needed?” receiving the highest rating.

There was 2 customer that rated “Courtesy of Staff”, with a 5 or less, representing 1.3 percent of our customers.

‘Did you get the information you needed?’ received the highest rating with 9.84 on a scale of 1 to 10.

What Did Our Customer Use?

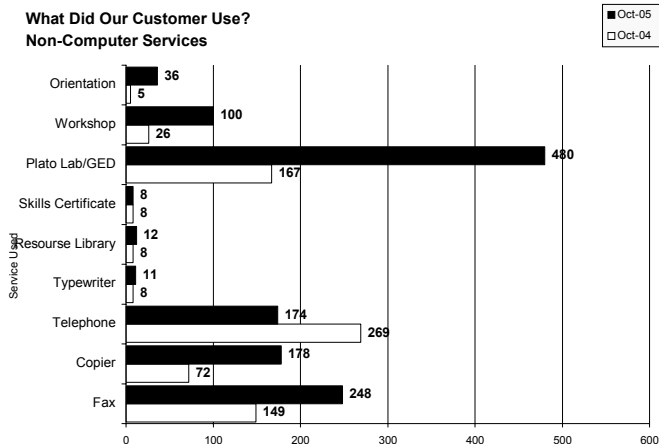


How our customers use our services?

Computer related services are always the most used service by our customers, with 2,744 customers responding to this question. CalJobs/Internet Job Search and Resume/Cover Letter received the most usage within the computer service sub-topic.

‘248 customers used the Fax Machine at WorkNet in the month of October.’

**What Did Our Customer Use?
Non-Computer Services**



Plato Lab/GED and Fax are the most used non-computer related services. Telephone Copier, and Workshop are the next most use services under this category.



**Worknet
Customer Service & Satisfaction Report
For All Locations**

OCTOBER 2005

Merced County Department of Workforce Investment

Customer Service/Satisfaction Summary Data - All Locations

	Oct-04	Aug-05	Sep-05	Oct-05
Daily Sign-ins				
Return Visit	3,339	3,549	3,040	2,690
First Visit	197	371	284	276
Total	3,536	3,920	3,324	2,966
How did you hear about us?				
NewsPaper	14	3	8	3
RadioAd	3	0	1	0
Flyer	1	1	11	9
Friend/Family	13	13	31	29
Internet	1	0	0	1
EDD	2	8	5	9
Walkins	15	73	94	78
CalWORKs	3	6	14	18
Phonebook	4	1	1	4
Other	NA	1	10	6
What did our customer use?				
Computer	598	2,056	1,903	1,566
CalJOBS/Internet Job Search	363	1,424	1,290	1,066
Resume/Cover Letter	134	485	264	201
Typing/Practice	42	126	90	72
Type Certificate	9	94	39	35
PESCO	21	42	34	77
Job Listing	344	803	543	516
Fax	149	423	321	248
Copier	72	487	229	178
Telephone	269	231	186	174
Typewriter	8	8	19	11
Resource Library	8	15	11	12
Skills Certificate	8	9	9	8
Plato Lab/GED	167	489	518	480
Workshop	26	121	122	100
Orientation	5	59	42	36
Customer Satisfaction				
Courtesy of Staff	9.36	9.50	9.12	9.72
Time it took for staff to assist you	9.32	9.49	9.44	9.80
Did you get the information you needed	9.46	9.52	9.49	9.84
Were you satisfied with the services?	9.33	9.52	9.58	9.83
Did we help you today?	9.35	9.52	9.67	9.82
Would you refer our services to others?				
Yes	102	152	136	136
No	2	2	1	1



**Worknet
Customer Service & Satisfaction Report
For All Locations**

OCTOBER 2005

Merced County Department of Workforce Investment

Customer Service/Satisfaction Summary Data - Individual Locations

Number of Sign-ins																					
Day of the Week	M	T	W	TH	F	T	W	TH	F	M	T	W	TH	F	M	T	W	TH	F	M	Total
Date	03	04	05	06	07	11	12	13	14	17	18	19	20	21	24	25	26	27	28	31	Total
Livingston	12	6	6	8	5	9	7	5	7	8	5	4	2	4	8	3	8	3	7	6	123
Los Banos	43	53	59	130	70	67	47	53	49	54	46	51	44	45	54	58	59	50	37	49	1,118
Merced	105	88	73	76	81	92	110	110	0	108	119	83	67	80	94	128	75	80	72	84	1,725
Total	160	147	138	214	156	168	164	168	56	170	170	138	113	129	156	189	142	133	116	139	2,966

Who were are visitors	Merced	Los Banos	Livingston	All Locations
First Visit	143	101	32	276
Return Visit	1,582	1,017	91	2,690
How did you hear about us?				
Newspaper	0	3	0	3
Radio Ad	0	0	0	0
Flyer	1	8	0	9
Friend	4	15	10	29
Internet	1	0	0	1
EDD	1	5	3	9
Walk-ins	6	53	19	78
CalWORKs	2	14	2	18
Phone Book	3	1	0	4
Other	1	4	0	5
What did our customers use?				
Computer	1,020	437	109	1,566
CalJOBS/Internet Job Search	658	336	72	1,066
Resume	116	61	24	201
Typing	36	24	12	72
Typing Certificate	22	6	7	35
Career	45	31	1	77
Job Listing	170	272	74	516
Fax	131	100	17	248
Copier	132	40	6	178
Telephone	98	63	13	174
Typewriter	3	8	0	11
Resource Library	4	7	1	12
Skills Certificate	4	4	0	8
Plato Lab	110	370	0	480
Workshop	4	96	0	100
Orientation	28	8	0	36
Customer Satisfaction				
Courtesy of Staff	9.37	9.84	9.60	9.72
Time it took for staff to assist you	9.79	9.79	9.83	9.80
Did you get the information you needed?	9.89	9.85	9.80	9.84
Were you satisfied with the services?	9.84	9.83	9.83	9.83
Did we help you today?	9.79	9.83	9.83	9.82



Worknet Customer Service & Satisfaction Report For All Locations

NOVEMBER 2005

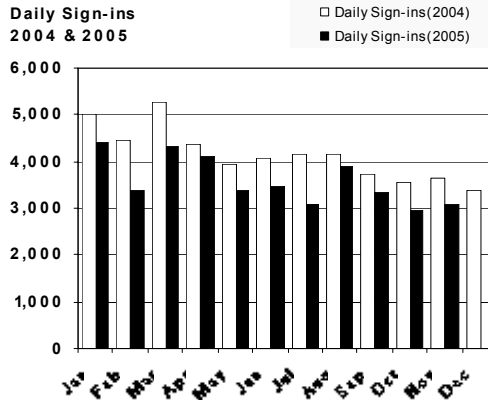
Merced County Department of Workforce Investment

Daily Sign-ins

Daily sign-ins for November 3,088 totaled. Up 122 from the previous month and up 548 from November 2004. Daily sign-ins for the month of November is below the 5 year average.

November's 5 year average: 3,426

2004 annual average: 4,146

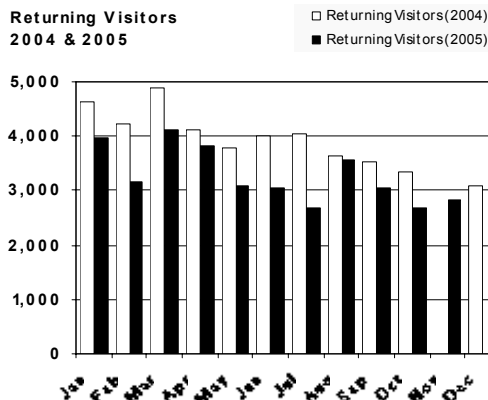


Return Visits

Return visits for November totaled 2,823. Up 133 from the previous month. Due to a change in the method of data collection return visits can not be compared to last years data.

November's 5 year average: NA

2004 annual average: 3,605

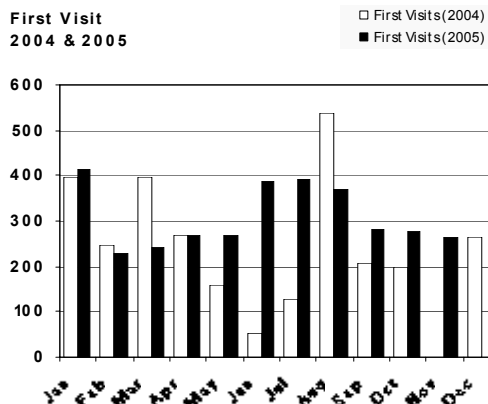


First Visits

First Visits for November totaled 365. Down 11 from the previous month. Due to a change in the method of data collection return visits can not be compared to last years data.

November's 5 year average:

2004 annual average: 238



Contents

<i>How did you hear about us?</i>	2
<i>Would you refer our services to others?</i>	2
<i>Customer Satisfaction</i>	3
<i>How our customers used our services</i>	3
<i>Summary Data - All Locations</i>	4
<i>Summary Data - Individual Locations</i>	5

Customer Flow for November 2005

All Locations

- On average, Mondays were the busiest days of the week. Averaging 181 clients per day. (Weekly Average: 618 customers)

Merced

- Mondays were the busiest day of the week, with an average of 105 clients per day. (Weekly Average: 397 customers).

Los Banos

- Wednesdays were the busiest day of the week, with an average of 54 clients per day (Weekly Average: 350 customers).

Livingston

- Mondays were the busiest day of the week, with an average of 9 per day (Weekly Average: 27 customers).



The Quick Look

A Merced County Labor Market Review - September 2005

Welcome to the Merced County labor market review. The Quick Look has been developed by the Department of Workforce Investment staff for the Merced County Local Workforce Investment Board. The data and information is provided by the California Employment Development Department. Questions can be referred to the Department of Workforce Investment, 1880 West Wardrobe Avenue, Merced, CA 95340. Telephone (209) 724-2042. Email: pitd26@co.merced.ca.us

Merced County Data not adjusted for Seasonality	Labor Force and Industrial Employment					
	March 2004 Benchmark				Percent Change	
	Sep 04	Jul 05	Aug 05 Revised	Sep 05 Prelim.	Month	Year
Civilian Labor Force	99,300	99,700	102,900	102,500	-0.4%	3.2%
Civilian Employment	91,400	90,600	94,500	94,700	0.2%	3.6%
Civilian Unemployment	7,900	9,100	8,400	7,800	-7.1%	-1.3%
Civilian Unemployment Rate	8.0%	9.1%	8.2%	7.6%		
(CA Unemployment Rate)	5.7%	5.4%	5.1%	4.8%		
(U.S. Unemployment Rate)	5.1%	5.2%	4.9%	4.8%		
Total, All Industries	70,200	68,000	71,100	72,500	2.0%	3.3%
Total Farm	12,400	11,700	12,100	12,700	5.0%	2.4%
Total Nonfarm	57,800	56,300	59,000	59,800	1.4%	3.5%
Total Private	45,000	45,400	45,800	46,100	0.7%	2.4%
Goods Producing	15,800	16,500	16,800	16,900	0.6%	7.0%
Natural Resources and Mining	0	100	100	100	0.0%	
Construction	3,500	4,000	4,000	4,000	0.0%	14.3%
Manufacturing	12,300	12,400	12,700	12,800	0.8%	4.1%
Durable Goods	1,700	1,600	1,600	1,600	0.0%	-5.9%
Nondurable Goods	10,600	10,800	11,100	11,200	0.9%	5.7%
Food Man & Beverage & Tobacco	9,000	9,300	9,500	9,700	2.1%	7.8%
Residual - Textile Mills	1,600	1,500	1,600	1,500	-6.3%	-6.3%
Service Providing	42,000	39,800	42,200	42,900	1.7%	2.1%
Private Service Producing	29,200	28,900	29,000	29,200	0.7%	0.0%
Trade, Transportation and Utilities	11,000	11,000	11,000	10,900	-0.9%	-0.9%
Wholesale Trade	1,500	1,400	1,400	1,400	0.0%	-6.7%
Retail Trade	7,600	7,700	7,700	7,600	-1.3%	0.0%
Food and Beverage Stores	1,500	1,500	1,500	1,500	0.0%	0.0%
General Merchandise Stores	1,600	1,800	1,800	1,700	-5.6%	6.3%
Residual - Miscellaneous Store Retailers	4,500	4,400	4,400	4,400	0.0%	-2.2%
Transportation, Warehousing and Utilities	1,900	1,900	1,900	1,900	0.0%	0.0%
Information	1,400	1,300	1,300	1,400	7.7%	0.0%
Financial Activities	1,800	1,700	1,800	1,800	0.0%	0.0%
Finance and Insurance	1,100	1,000	1,100	1,100	0.0%	0.0%
Real Estate and Rental and Leasing	700	700	700	700	0.0%	0.0%
Professional and Business Services	3,300	3,300	3,300	3,400	3.0%	3.0%
Educational and Health Services	5,400	5,300	5,300	5,400	1.9%	0.0%
Leisure and Hospitality	4,700	4,700	4,700	4,700	0.0%	0.0%
Food Services and Drinking Places	4,000	3,900	3,900	3,900	0.0%	-2.5%
Residual - Arts, Entertainment, and Recreation	700	800	800	800	0.0%	14.3%
Other Services	1,600	1,600	1,600	1,600	0.0%	0.0%
Government	12,800	10,900	13,200	13,700	3.8%	7.0%
Federal Government	800	800	800	800	0.0%	0.0%
State Government	500	800	900	900	0.0%	80.0%
Local Government	11,500	9,300	11,500	12,000	4.3%	4.3%

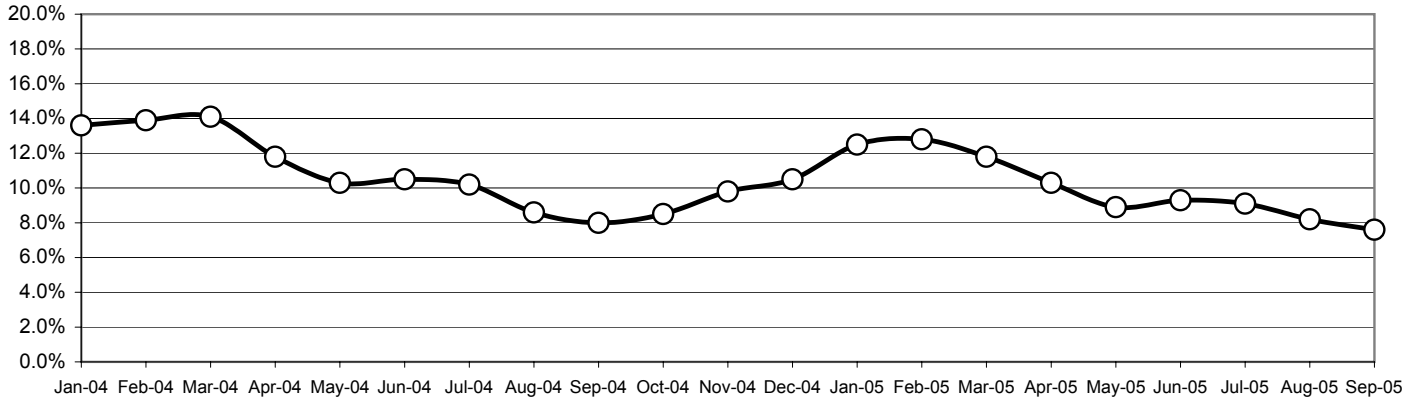
The County continues with one of the highest unemployment rates in the State, ranking 54rd out of 58 counties in the Month of September. The preliminary result is a decrease of 0.6 percentage point in the unemployment rate from the revised August rate. This preliminary figure is a decrease of 0.4 percentage point from the unemployment rate of one year ago.

Overall, the County's Civilian Labor Force decreased by 400 persons over last month's figure and an increase of 3,200 persons over year ago figures. Industrial employment increased by 1,400 jobs in September over August's figures and showed an increased of 2,300 jobs over year ago figures.

The Quick Look

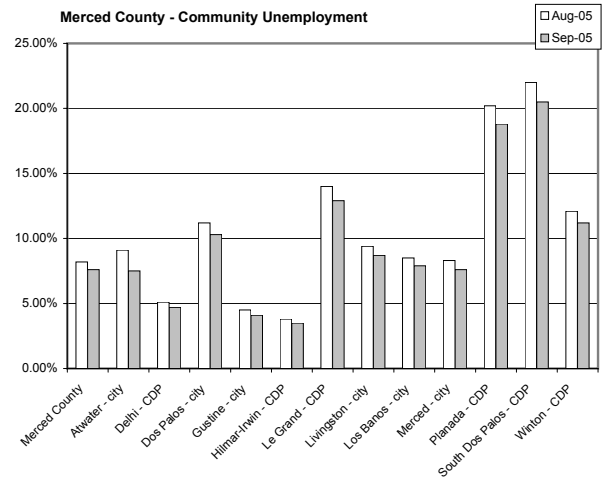
A Merced County Labor Market Review - September 2005

**Merced County Unemployment Rate
2004 - 2005**



Sub County average unemployment rates for the county, cities, and municipalities.

Area Name	Labor Force	Employment	Unemployment	
			Number	Rate
Merced County	102,500	94,700	78,000	7.6%
Atwater City	12,000	11,100	900	7.5%
Delhi CDP	4,000	3,800	200	4.7%
Dos Palos City	1,900	1,700	200	10.3%
Gustine City	2,500	2,400	100	4.1%
Hilmar-Irwin CDP	2,800	2,700	100	3.5%
Le Grand CDP	700	600	100	12.9%
Livingston City	4,900	4,500	400	8.7%
Los Banos City	12,700	11,700	1,000	7.9%
Merced City	30,300	28,000	2,300	7.6%
Planada CDP	1,600	1,300	300	18.8%
South Dos Palos CDP	400	300	100	20.5%
Winton CDP	3,800	3,400	400	11.2%



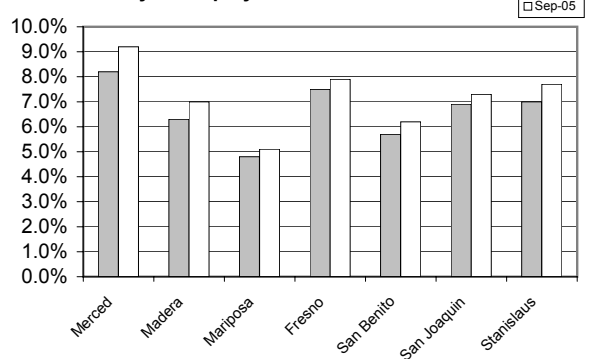
CDP - Census Designated Place

Merced County's workforce has grown over the past 20 years reflecting improvement of the County's economic well being; however, unemployment remains a consistent barrier to greater prosperity. Average unemployment has fluctuated from an annual low of 9.7 percent to an annual high of 17.1 percent.

Seven County Quick Look

County	Rank	Labor Force	Employ	Unemployed	Rate
Merced	56	99,400	90,200	9,200	9.2%
Madera	40	65,700	61,100	4,600	7.0%
Mariposa	18	9,520	9,040	480	5.1%
Fresno	49	427,700	393,900	33,800	7.9%
San Benito	34	25,100	23,500	1,600	6.2%
San Joaquin	43	291,500	270,300	21,200	7.3%
Stanislaus	46	236,300	218,100	18,200	7.7%

Seven County Unemployment Rate





The Quick Look

A Merced County Labor Market Review - October 2005

Welcome to the Merced County labor market review. The Quick Look has been developed by the Department of Workforce Investment staff for the Merced County Local Workforce Investment Board. The data and information is provided by the California Employment Development Department. Questions can be referred to the Department of Workforce Investment, 1880 West Wardrobe Avenue, Merced, CA 95340. Telephone (209) 724-2042. Email: pitd26@co.merced.ca.us

Merced County Data not adjusted for Seasonality	Labor Force and Industrial Employment					
	March 2004 Benchmark				Percent Change	
	Oct 04	Aug 05	Sep 05 Revised	Oct 05 Prelim.	Month	Year
Civilian Labor Force	99,700	102,900	102,500	101,400	-1.1%	1.7%
Civilian Employment	91,200	94,500	94,700	93,200	-1.6%	2.2%
Civilian Unemployment	8,500	8,400	7,900	8,200	3.8%	-3.5%
Civilian Unemployment Rate	8.5%	8.2%	7.7%	8.1%		
(CA Unemployment Rate)	5.7%	5.1%	4.9%	5.0%		
(U.S. Unemployment Rate)	5.1%	4.9%	4.8%	4.6%		
Total, All Industries	69,800	71,100	72,600	70,900	-2.3%	1.6%
Total Farm	12,100	12,100	12,700	12,400	-2.4%	2.5%
Total Nonfarm	57,700	59,000	59,900	58,500	-2.3%	1.4%
Total Private	44,500	45,800	46,000	44,700	-2.8%	0.4%
Goods Producing	15,000	16,800	16,900	15,500	-8.3%	3.3%
Natural Resources and Mining	0	100	100	0	-100.0%	
Construction	3,600	4,000	4,000	39,000	-2.5%	8.3%
Manufacturing	11,400	12,700	12,800	11,600	-9.4%	1.8%
Durable Goods	1,600	1,600	1,600	1,600	0.0%	0.0%
Nondurable Goods	9,800	11,100	11,200	10,000	-10.7%	2.0%
Food Man & Beverage & Tobacco	8,200	9,500	9,700	8,500	-12.4%	3.7%
Residual - Textile Mills	1,600	1,600	1,500	1,500	0.0%	-6.3%
Service Providing	42,700	42,200	43,000	43,000	0.0%	0.7%
Private Service Producing	29,500	29,000	29,100	29,200	0.3%	-1.0%
Trade, Transportation and Utilities	11,200	11,000	10,900	11,100	1.8%	-0.9%
Wholesale Trade	1,500	1,400	1,400	1,400	0.0%	-6.7%
Retail Trade	7,800	7,700	7,600	7,800	2.6%	0.0%
Food and Beverage Stores	1,500	1,500	1,500	1,500	0.0%	0.0%
General Merchandise Stores	1,700	1,800	1,700	1,800	5.9%	5.9%
Residual - Miscellaneous Store Retailers	4,600	4,400	4,400	4,500	2.3%	-2.2%
Transportation, Warehousing and Utilities	1,900	1,900	1,900	1,900	0.0%	0.0%
Information	1,400	1,300	1,300	1,300	0.0%	-7.1%
Financial Activities	1,800	1,800	1,800	1,800	0.0%	0.0%
Finance and Insurance	1,100	1,100	1,100	1,100	0.0%	0.0%
Real Estate and Rental and Leasing	700	700	700	700	0.0%	0.0%
Professional and Business Services	3,400	3,300	3,400	3,300	-2.9%	-2.9%
Educational and Health Services	5,400	5,300	5,400	5,400	0.0%	0.0%
Leisure and Hospitality	4,700	4,700	4,700	4,700	0.0%	0.0%
Food Services and Drinking Places	4,000	3,900	3,900	3,900	0.0%	-2.5%
Residual - Arts, Entertainment, and Recreation	700	800	800	800	0.0%	14.3%
Other Services	1,600	1,600	1,600	1,600	0.0%	0.0%
Government	12,400	12,400	13,100	13,000	-0.8%	4.5%
Federal Government	800	800	800	800	0.0%	0.0%
State Government	500	900	900	900	0.0%	80.0%
Local Government	11,900	11,500	12,200	12,100	-0.8%	1.7%

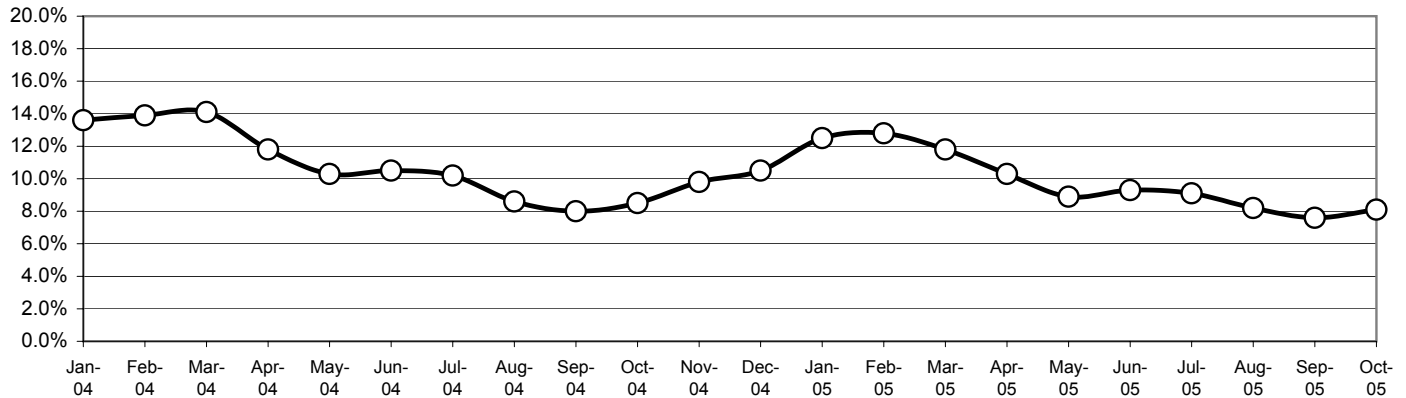
The County continues with one of the highest unemployment rates in the State, ranking 51rd out of 58 counties in the Month of October. The preliminary result is an increase of 0.4 percentage point in the unemployment rate from the revised September rate. This preliminary figure is a decrease of 0.4 percentage point from the unemployment rate of one year ago.

Overall, the County's Civilian Labor Force decreased by 1,100 persons over last month's figure and an increase of 1,700 persons over year ago figures. Industrial employment decreased by 1,700 jobs in October over September's figures and showed an increased of 1,100 jobs over year ago figures.

The Quick Look

A Merced County Labor Market Review - October 2005

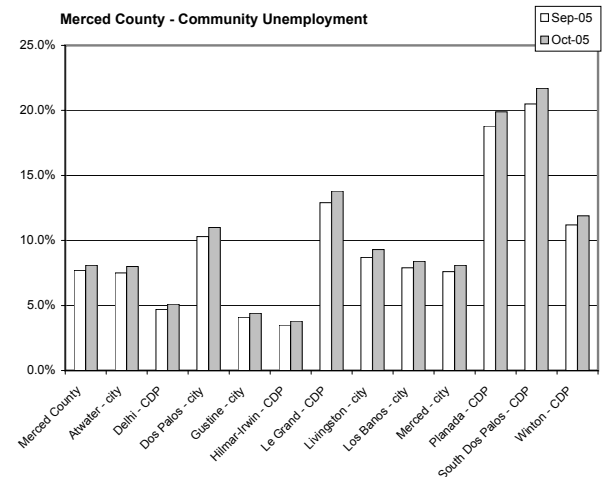
**Merced County Unemployment Rate
2004 - 2005**



Sub County average unemployment rates for the county, cities, and municipalities.

Area Name	Labor Force	Employment	Unemployment	
			Number	Rate
Merced County	101,400	93,200	8,200	8.1%
Atwater City	12,000	11,000	1,000	8.0%
Delhi CDP	4,000	3,800	200	5.1%
Dos Palos City	1,900	1,700	200	11.0%
Gustine City	2,500	2,400	100	4.4%
Hilmar-Irwin CDP	2,800	2,700	100	3.8%
Le Grand CDP	700	600	100	13.8%
Livingston City	5,000	4,500	500	9.3%
Los Banos City	12,600	11,500	1,100	8.4%
Merced City	29,900	27,500	2,400	8.1%
Planada CDP	1,600	1,300	300	19.9%
South Dos Palos CDP	400	300	100	21.7%
Winton CDP	3,700	3,300	400	11.9%

CDP - Census Designated Place

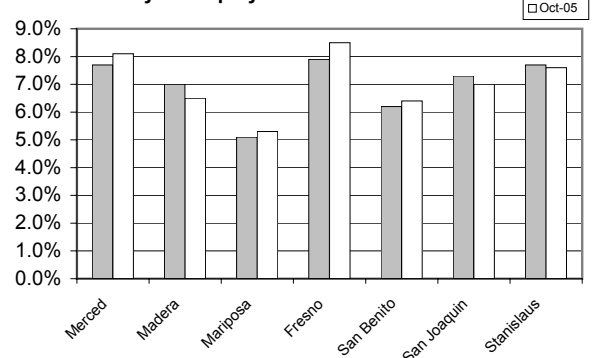


Merced County's workforce has grown over the past 20 years reflecting improvement of the County's economic well being; however, unemployment remains a consistent barrier to greater prosperity. Average unemployment has fluctuated from an annual low of 9.7 percent to an annual high of 17.1 percent.

Seven County Quick Look

County	Rank	Labor Force	Employ	Unemployed	Rate
Merced	51	101,400	93,200	8,200	8.1%
Madera	41	65,400	61,100	4,200	6.5%
Mariposa	25	8,590	8,130	450	5.3%
Fresno	52	408,100	373,400	34,700	8.5%
San Benito	40	25,200	23,600	1,600	6.4%
San Joaquin	43	291,700	271,100	20,500	7.0%
Stanislaus	48	233,800	216,000	17,800	7.6%

Seven County Unemployment Rate





The Quick Look

A Merced County Labor Market Review - November 2005

Welcome to the Merced County labor market review. The Quick Look has been developed by the Department of Workforce Investment staff for the Merced County Local Workforce Investment Board. The data and information is provided by the California Employment Development Department. Questions can be referred to the Department of Workforce Investment, 1880 West Wardrobe Avenue, Merced, CA 95340. Telephone (209) 724-2042. Email: pitd26@co.merced.ca.us

Merced County Data not adjusted for Seasonality	Labor Force and Industrial Employment					
	March 2004 Benchmark				Percent Change	
	Nov 04	Sep 05	Oct 05 Revised	Nov 05 Prelim.	Month	Year
Civilian Labor Force	99,600	102,500	101,700	101,500	-0.2%	1.9%
Civilian Employment	89,800	94,700	93,600	92,300	-1.4%	2.8%
Civilian Unemployment	9,800	7,900	8,200	9,200	12.2%	-6.1%
Civilian Unemployment Rate	9.8%	7.7%	8.0%	9.1%		
(CA Unemployment Rate)	5.8%	4.9%	5.0%	5.1%		
(U.S. Unemployment Rate)	5.2%	4.8%	4.6%	4.8%		
Total, All Industries	68,600	72,600	71,100	70,000	-1.5%	2.0%
Total Farm	10,500	12,700	12,400	10,700	-13.7%	1.9%
Total Nonfarm	58,100	59,900	58,700	59,300	1.0%	2.1%
Total Private	44,500	46,000	44,800	45,000	0.4%	1.1%
Goods Producing	14,800	16,900	15,500	15,500	0.0%	4.7%
Natural Resources and Mining	0	100	0	0		
Construction	3,500	4,000	3,900	3,900	0.0%	11.4%
Manufacturing	11,300	12,800	11,600	11,600	0.0%	2.7%
Durable Goods	1,600	1,600	1,600	1,600	0.0%	0.0%
Nondurable Goods	9,700	11,200	10,000	10,000	0.0%	3.1%
Food Man & Beverage & Tobacco	8,100	9,700	8,500	8,500	0.0%	4.9%
Residual - Textile Mills	1,600	1,500	1,500	1,500	0.0%	-6.3%
Service Providing	43,300	43,000	43,200	43,800	1.4%	1.2%
Private Service Producing	29,700	29,100	29,300	29,500	0.7%	-0.7%
Trade, Transportation and Utilities	11,400	10,900	11,100	11,300	1.8%	-0.9%
Wholesale Trade	1,500	1,400	1,400	1,400	0.0%	-6.7%
Retail Trade	8,000	7,600	7,800	8,000	2.6%	0.0%
Food and Beverage Stores	1,500	1,500	1,500	1,500	0.0%	0.0%
General Merchandise Stores	1,900	1,700	1,800	2,000	11.1%	5.3%
Residual - Miscellaneous Store Retailers	4,600	4,400	4,500	4,500	0.0%	-2.2%
Transportation, Warehousing and Utilities	1,900	1,900	1,900	1,900	0.0%	0.0%
Information	1,400	1,300	1,300	1,300	0.0%	-7.1%
Financial Activities	1,900	1,800	1,800	1,800	0.0%	-5.3%
Finance and Insurance	1,100	1,100	1,100	1,100	0.0%	0.0%
Real Estate and Rental and Leasing	800	700	700	700	0.0%	-12.5%
Professional and Business Services	3,300	3,400	3,300	3,300	0.0%	0.0%
Educational and Health Services	5,400	5,400	5,500	5,500	0.0%	1.9%
Leisure and Hospitality	4,700	4,700	4,700	4,700	0.0%	0.0%
Food Services and Drinking Places	4,000	3,900	3,900	3,900	0.0%	-2.5%
Residual - Arts, Entertainment, and Recreation	700	800	800	800	0.0%	14.3%
Other Services	1,600	1,600	1,600	1,600	0.0%	0.0%
Government	13,600	16,900	13,900	14,300	2.9%	5.1%
Federal Government	800	800	800	800	0.0%	0.0%
State Government	500	900	1,000	1,000	0.0%	100.0%
Local Government	12,300	12,200	12,100	12,500	3.3%	1.6%

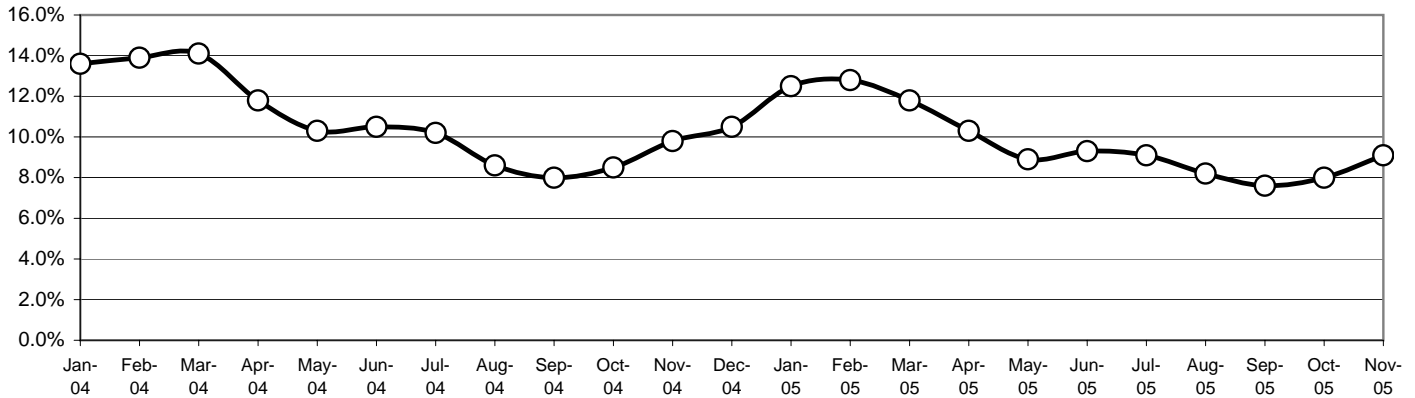
The County continues with one of the highest unemployment rates in the State, ranking 54th out of 58 counties in the month of November. The preliminary result is an increase of 1.1 percentage point in the unemployment rate from the revised October rate. This preliminary figure is a decrease of 0.7 percentage point from the unemployment rate of one year ago.

Overall, the County's Civilian Labor Force decreased by 200 persons over last month's figure and an increase of 1,900 persons over year ago figures. Industrial employment decreased by 1,100 jobs in November over October's figures and showed an increased of 1,400 jobs over year ago figures.

The Quick Look

A Merced County Labor Market Review - November 2005

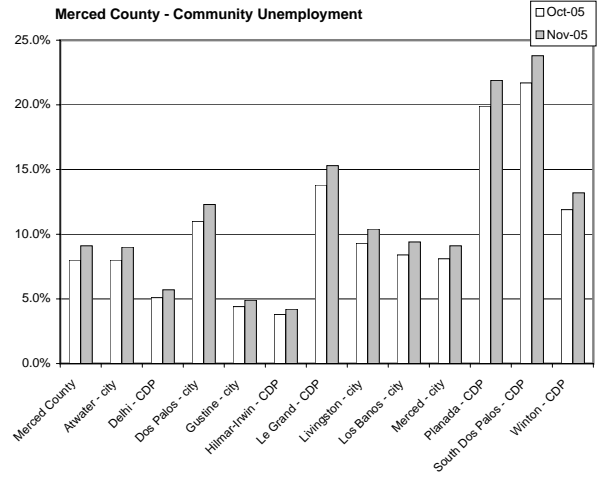
**Merced County Unemployment Rate
2004 - 2005**



Sub County average unemployment rates for the county, cities, and municipalities.

Area Name	Labor Force	Employment	Unemployment	
			Number	Rate
Merced County	101,500	92,300	9,200	9.1%
Atwater City	12,000	10,900	1,100	9.0%
Delhi CDP	3,900	3,700	200	5.7%
Dos Palos City	1,900	1,700	200	12.3%
Gustine City	2,400	2,300	100	4.9%
Hilmar-Irwin CDP	2,700	2,600	100	4.2%
Le Grand CDP	700	600	100	15.3%
Livingston City	4,900	4,400	500	10.4%
Los Banos City	12,600	11,400	1,200	9.4%
Merced City	30,000	27,300	2,700	9.1%
Planada CDP	1,700	1,300	400	21.9%
South Dos Palos CDP	400	300	100	23.8%
Winton CDP	3,800	3,300	500	13.2%

CDP - Census Designated Place

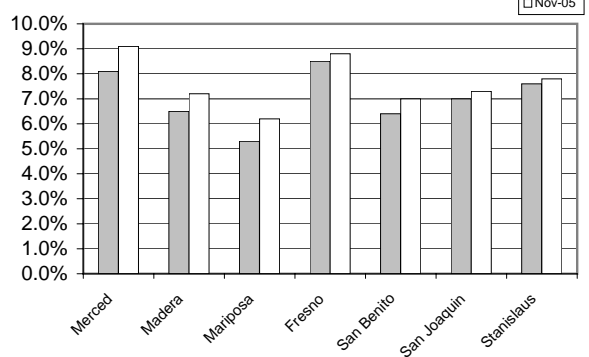


Merced County's workforce has grown over the past 20 years reflecting improvement of the County's economic well being; however, unemployment remains a consistent barrier to greater prosperity. Average unemployment has fluctuated from an annual low of 9.7 percent to an annual high of 17.1 percent.

Seven County Quick Look

County	Rank	Labor Force	Employ	Unemployed	Rate
Merced	54	101,500	92,300	9,200	9.1%
Madera	39	63,100	58,600	4,500	7.2%
Mariposa	32	8,290	7,770	520	6.2%
Fresno	51	401,700	366,300	35,400	8.8%
San Benito	37	25,200	23,400	1,800	7.0%
San Joaquin	41	28,800	266,900	21,100	7.3%
Stanislaus	44	231,900	213,800	18,100	7.8%

Seven County Unemployment Rate



WIA PARTICIPANT SUMMARY REPORT - ADULT

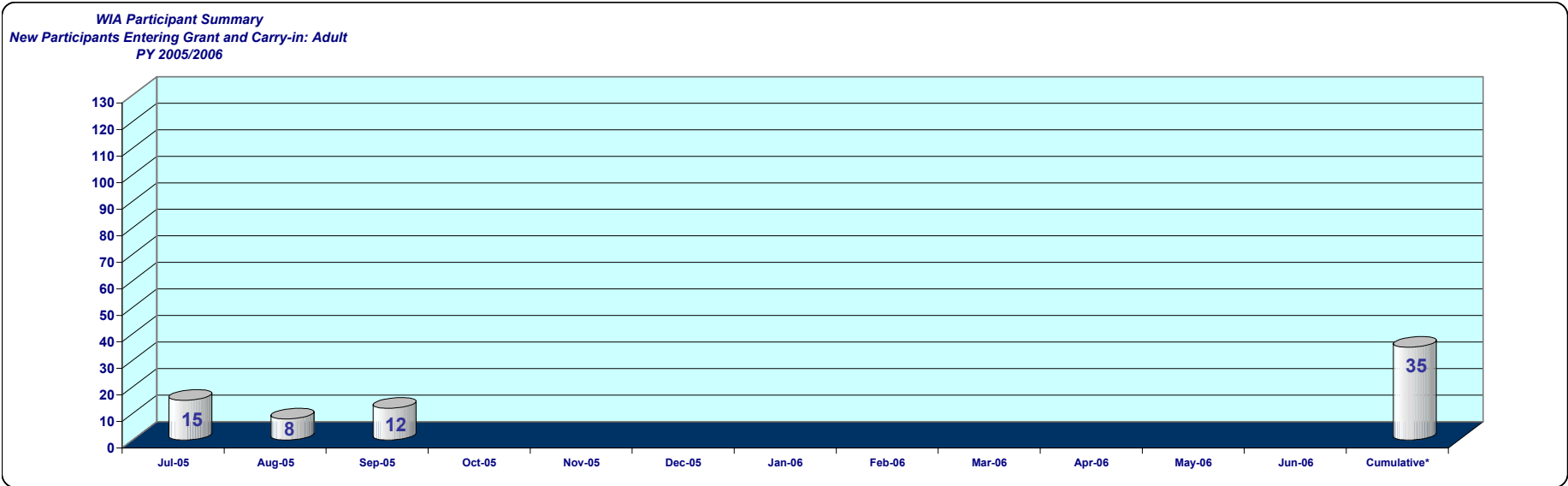
PY 2005/2006

Report Range 07/2005 to 09/2005

	ADULT												Cumulative*	Part. Plan PY 05/06	% of Plan Attained	
	Jul-05	Aug-05	Sep-05	Oct-05	Nov-05	Dec-05	Jan-06	Feb-06	Mar-06	Apr-06	May-06	Jun-06				
Total Participants	186	194	206											206	317	65.0%
Participants Carried In	171	186	194											171	223	76.7%
New Participants Entering Grant	15	8	12											35	94	37.2%

Total Participants Exiting WI	Jul-05	Aug-05	Sep-05	Oct-05	Nov-05	Dec-05	Jan-06	Feb-06	Mar-06	Apr-06	May-06	Jun-06	Cumulative*	Part. Plan PY 05/06	% of Plan Attained
Entered Unsubsidized Employment	0	0	31										31	98	31.6%
Training Related	0	0	20										20	63	31.7%
Entered Military Service	0	0	15										15		
Entered Qualified Apprenticeship Program	0	0	0										0		
Entered Post-Secondary Education	0	0	0										0		
Entered Advanced Training	0	0	0										0		
Attained Recognized Certificate/Diploma/Degree	0	0	18										18		
Attained High School Diploma/GED	0	0	0										0		
Returned to Secondary School (Youth Only)	0	0	0										0		
Exits Excluded from Performance	0	0	2										2		
Other Exits	0	0	27										27	79	34.2%

Program Activities/Services Summary	Enrolled												Cumulative*	Part. Plan PY 05/06	% of Plan Attained	
	Jul-05	Aug-05	Sep-05	Oct-05	Nov-05	Dec-05	Jan-06	Feb-06	Mar-06	Apr-06	May-06	Jun-06				
Core Services (Registered)	186	194	206											206	317	65.0%
Intensive Services	170	179	190											190	170	111.8%
Training Services	76	90	99											99	100	99.0%
Youth Services	0	0	0											0		
Concurrent Program Participants	9	10	12											12		
Individual Training Accounts	5	5	5											5		
Goals Set (Younger Youth Only)	0	0	0											0		



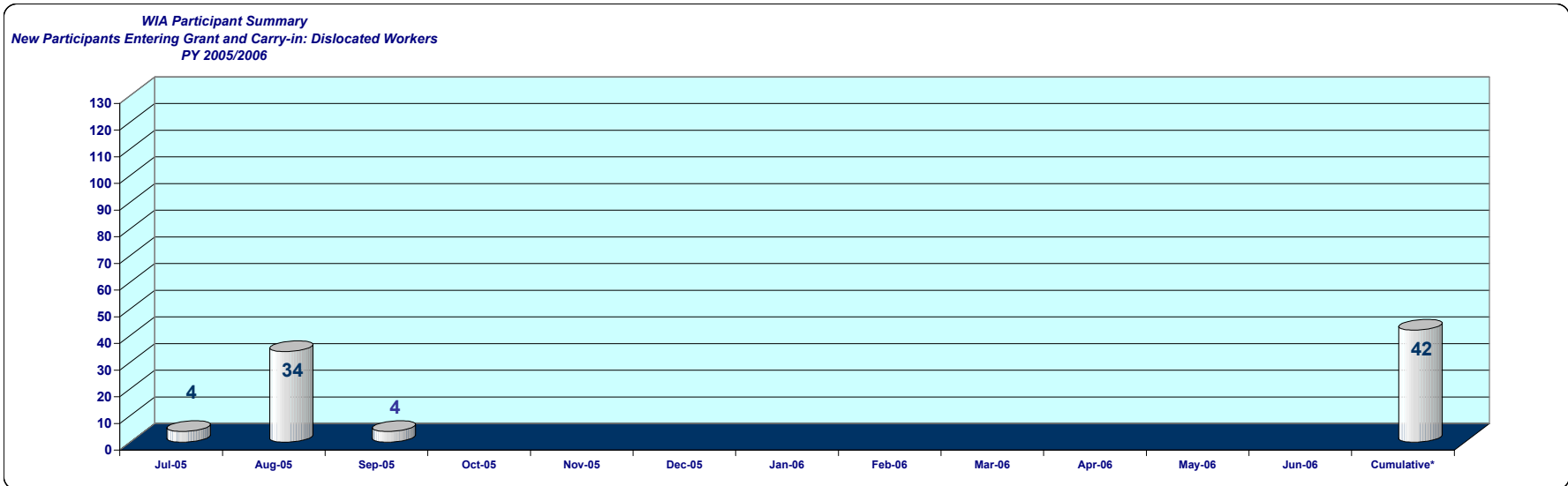
Monthly totals are produced on the 20th of the following month and are not updated on a monthly basis. Late data entry are not updated for previous months, see cumulative totals for current total.

WIA PARTICIPANT SUMMARY REPORT - DISLOCATED WORKER
PY 2005/2006
Report Range 07/2005 to 09/2005

	DISLOCATED WORKER												Cumulative*	Part. Plan PY 05/06	% of Plan Attained	
	Jul-05	Aug-05	Sep-05	Oct-05	Nov-05	Dec-05	Jan-06	Feb-06	Mar-06	Apr-06	May-06	Jun-06				
Total Participants	126	160	164											164	224	73.2%
Participants Carried In	122	126	160											122	161	75.8%
New Participants Entering Grant	4	34	4											42	63	66.67%

	Jul-05	Aug-05	Sep-05	Oct-05	Nov-05	Dec-05	Jan-06	Feb-06	Mar-06	Apr-06	May-06	Jun-06	Cumulative*	Part. Plan PY 05/06	% of Plan Attained
Total Participants Exiting WI	0	0	16										16	72	22.2%
Entered Unsubsidized Employment	0	0	14										14	54	25.9%
Training Related	0	0	9										9	28	32.1%
Entered Military Service	0	0	0										0		
Entered Qualified Apprenticeship Program	0	0	0										0		
Entered Post-Secondary Education	0	0	0										0		
Entered Advanced Training	0	0	0										0		
Attained Recognized Certificate/Diploma/Degree	0	0	11										11		
Attained High School Diploma/GED	0	0	0										0		
Returned to Secondary School (Youth Only)	0	0	0										0		
Exits Excluded from Performance	0	0	0										0		
Other Exits	0	0	15										15	55	27.3%

Program Activities/Services Summary	Enrolled												Cumulative*	Part. Plan PY 05/06	% of Plan Attained	
	Jul-05	Aug-05	Sep-05	Oct-05	Nov-05	Dec-05	Jan-06	Feb-06	Mar-06	Apr-06	May-06	Jun-06				
Core Services (Registered)	126	160	164											164	317	51.7%
Intensive Services	110	140	143											143	170	84.1%
Training Services	48	49	51											51	100	51.0%
Youth Services	0	0	0											0		
Concurrent Program Participants	10	36	37											37		
Individual Training Accounts	7	7	7											7		
Goals Set (Younger Youth Only)	0	0	0											0		

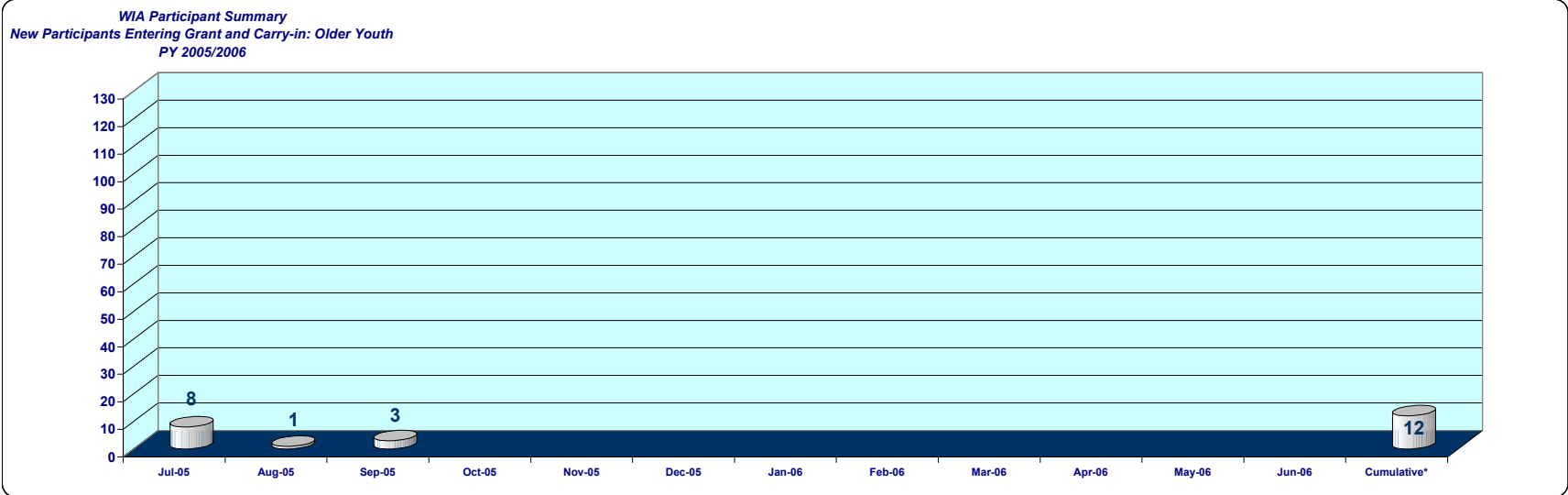


Monthly totals are produced on the 20th of the following month and are not updated on a monthly basis. Late data entry are not updated for previous months, see cumulative totals for current total.

WIA PARTICIPANT SUMMARY REPORT - OLDER YOUTH
PY 2005/2006
Report Range 07/2005 to 09/2005

	OLDER YOUTH												Cumulative*	Part. Plan PY 05/06	% of Plan Attained	
	Jul-05	Aug-05	Sep-05	Oct-05	Nov-05	Dec-05	Jan-06	Feb-06	Mar-06	Apr-06	May-06	Jun-06				
Total Participants	164	165	168											168	317	53.0%
Participants Carried In	156	164	165											156	378	41.3%
New Participants Entering Grant	8	1	3											12	35	34.3%
Total Participants Exiting WI	0	0	7											7		
Entered Unsubsidized Employment	0	0	7											7	33	21.2%
Training Related	0	0	4											4	15	26.7%
Entered Military Service	0	0	0											0		
Entered Qualified Apprenticeship Program	0	0	0											0		
Entered Post-Secondary Education	0	0	0											0	57	0.0%
Entered Advanced Training	0	0	0											0	10	0.0%
Attained Recognized Certificate/Diploma/Degree	0	0	6											6		
Attained High School Diploma/GED	0	0	0											0		
Returned to Secondary School (Youth Only)	0	0	0											0		
Exits Excluded from Performance	0	0	0											0		
Other Exits	0	0	7											7	60	11.7%

Program Activities/Services Summary	Enrolled												Cumulative*	Part. Plan PY 05/06	% of Plan Attained	
	Jul-05	Aug-05	Sep-05	Oct-05	Nov-05	Dec-05	Jan-06	Feb-06	Mar-06	Apr-06	May-06	Jun-06				
Core Services (Registered)	0	0	0											0		
Intensive Services	139	139	142											142		
Training Services	113	114	115											115		
Youth Services	159	160	163											163		
Concurrent Program Participants	65	65	67											67		
Individual Training Accounts	0	0	0											0		
Goals Set (Younger Youth Only)	0	0	0											0		



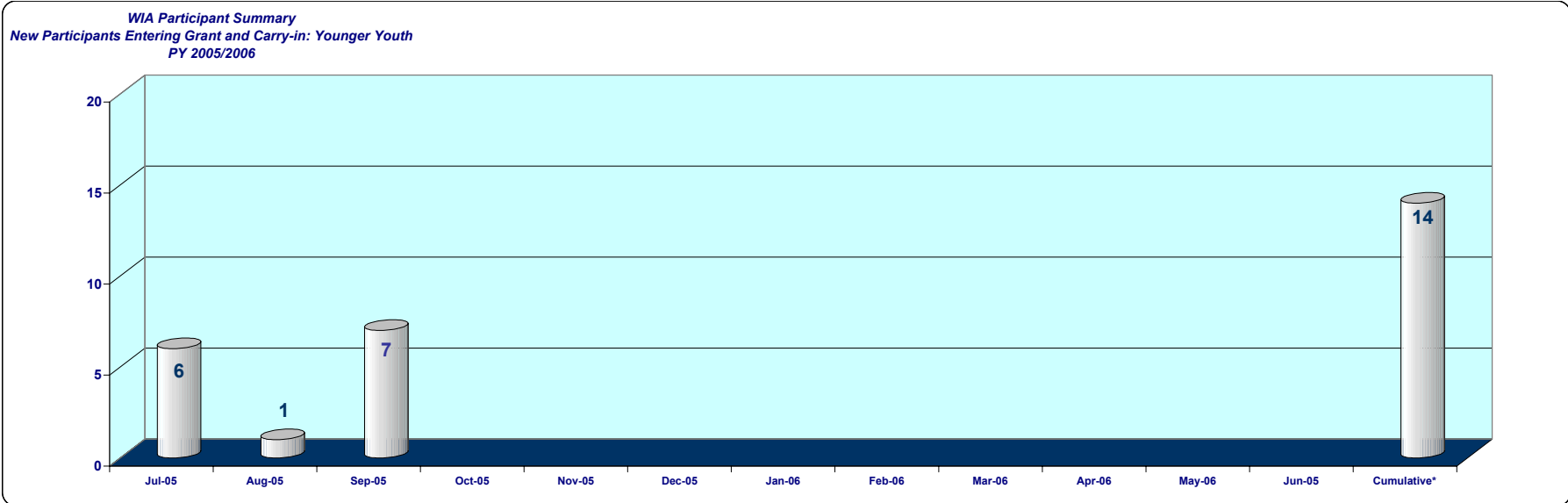
Monthly totals are produced on the 20th of the following month and are not updated on a monthly basis. Late data entry are not updated for previous months, see cumulative totals for current total.

WIA PARTICIPANT SUMMARY REPORT - YOUNGER YOUTH
PY 2005/2006
Report Range 07/2005 to 08/2005

	Jul-05	Aug-05	Sep-05	Oct-05	Nov-05	Dec-05	Jan-06	Feb-06	Mar-06	Apr-06	May-06	Jun-05	Cumulative*	Participant Plan PY 04/05	% of Plan Attained
Total Participants	583	584	591										591	900	65.7%
Participants Carried In	577	583	584										577	618	93.4%
New Participants Entering Grant	6	1	7										14	282	5.0%

Total Participants Exiting WI	Jul-05	Aug-05	Sep-05	Oct-05	Nov-05	Dec-05	Jan-06	Feb-06	Mar-06	Apr-06	May-06	Jun-05	Cumulative*	Participant Plan PY 04/05	% of Plan Attained
Total Participants Exiting WI	0	0	83										83		
Entered Unsubsidized Employment	0	0	8										8	80	10.0%
Training Related	0	0	12										12	20	60.0%
Entered Military Service	0	0	0										0	8	0.0%
Entered Qualified Apprenticeship Program	0	0	0										0	0	0.0%
Entered Post-Secondary Education	0	0	40										40	130	30.8%
Entered Advanced Training	0	0	1										1	5	20.0%
Attained Recognized Certificate/Diploma/Degree	0	0	75										75		
Attained High School Diploma/GED	0	0	75										75	450	16.7%
Returned to Secondary School (Youth Only)	0	0	6										6	15	40.0%
Exits Excluded from Performance	0	0	1										1		
Other Exits	0	0	82										82	40	205.0%

Program Activities/Services Summary	Enrolled														
Core Services (Registered)	0	0	0										0		
Intensive Services	97	99	100										100		
Training Services	79	79	82										82		
Youth Services	582	584	591										591		
Concurrent Program Participants	374	375	382										382		
Individual Training Accounts	0	0	0										0		
Goals Set (Younger Youth Only)	12	17	30										59		



Monthly totals are produced on the 20th of the following month and are not updated on a monthly basis. Late data entry are not updated for previous months, see cumulative totals for current total.

Code	Description	Adult		Youth		Dislocated Worker		Totals		Grand Total
		New	Carry Over	New	Carry Over	New	Carry Over	New	Carry Over	
CORE B	10 FOLLOW UP SRVCS CNSLNG	9	65			7	50	16	115	131
	11 STAFF ASSIST JOB DEVELOP		5				18		23	23
	12 STAFF ASSIST JOB REFER	4	11				28	10	39	49
	13 STAFF ASSIST JOB SRCH	4	42			35	51	39	93	132
	14 STAFF ASSIST WRKSHP		1						1	1
	15 OTHER CORE SERVICES	12	1			3	3	15	4	19
	16 NON WIA FUNDED SERVICES									
	17 CO-ENROLLED CORE SERVICES		1				16		17	17
20 HURRICANE KATRINA										
	30 CASE MGMNT FOR PARTIC	21	101	14	221	34	57	69	379	448
	31 COMPREHENSIVE ASSESSMNTS	8				1	13	9	13	22
	32 DEVELOP INDIV EMPL PLAN	11	3		1	3	7	14	11	25
	33 GROUP COUNSELING									
	34 EMPL EXPERIENCE			2	27			2	27	29
	35 INDIV CNSLNG CAREER PLAN				2				2	2
	36 OUT OF AREA JOB SEARCH									
	37 RELOCATION EXPENSES									
	38 SHORT TERM PREVOC SRVCS									
	39 INTERNSHIPS									
	40 OTHER INTENSIVE SRVCS		2				5		7	7
	41 NONWIA FUND INTENS SRVCS									
	42 CO-ENROLLED INTENSIVE SRVCS									
TRAINING	50 ADULT EDUCATION			1	35			1	35	36
	51 CUSTOMIZED TRAINING		2				1		3	3
	52 ENTREPRENEURIAL TRAINING									
	53 JOB READINESS TRAINING			3	13			3	13	16
	54 OCCUP SKILLS TRAINING	11	40	5	78	2	17	18	135	153
	55 ON THE JOB TRAINING	3	4				1	3	5	8
	56 PRIVATE SECTOR TRAINING									
	57 SKILL UPGRADNG RETRNG									
	58 WRKPLCE TRNG AND COOP ED									
	59 OTHER TRAINING SRVCS									
YOUTH	60 NON-WIA FUNDED TRNG SRVCS	6	26			1	14	7	40	47
	61 CO-ENROLLED TRAINING SRVCS									
	70 SUMMER RELATED				2				2	2
	71 EDUCATNL ACHVMNT SRVCS			29	641			29	641	670
	72 EMPLOYMENT SERVICES			4	270			4	270	274
	73 CITIZEN LEADERSHIP SRVCS				1				1	1
	74 OTHER YOUTH SERVICES									
	75 NONWIA FUNDED YOUTH SRVCS									
MISC.	76 CO-ENROLLED YOUTH SRVCS									
	80 OTHER JTPA									
	81 SUPPORTIVE SERVICES	28	93		16	35	61	63	170	233
	82 NEEDS RELATED PAYMENT									
	83 BREAK IN SERVICE									
	84 NON-WIA FUNDED MISC									
85 CO-ENROLLED MISCELLANEOUS										
86 BRK IN SERV - HEALTH/MED		1						1	1	

WIA Participant Characteristics Summary

Report Period: 7/2005 to 9/2005

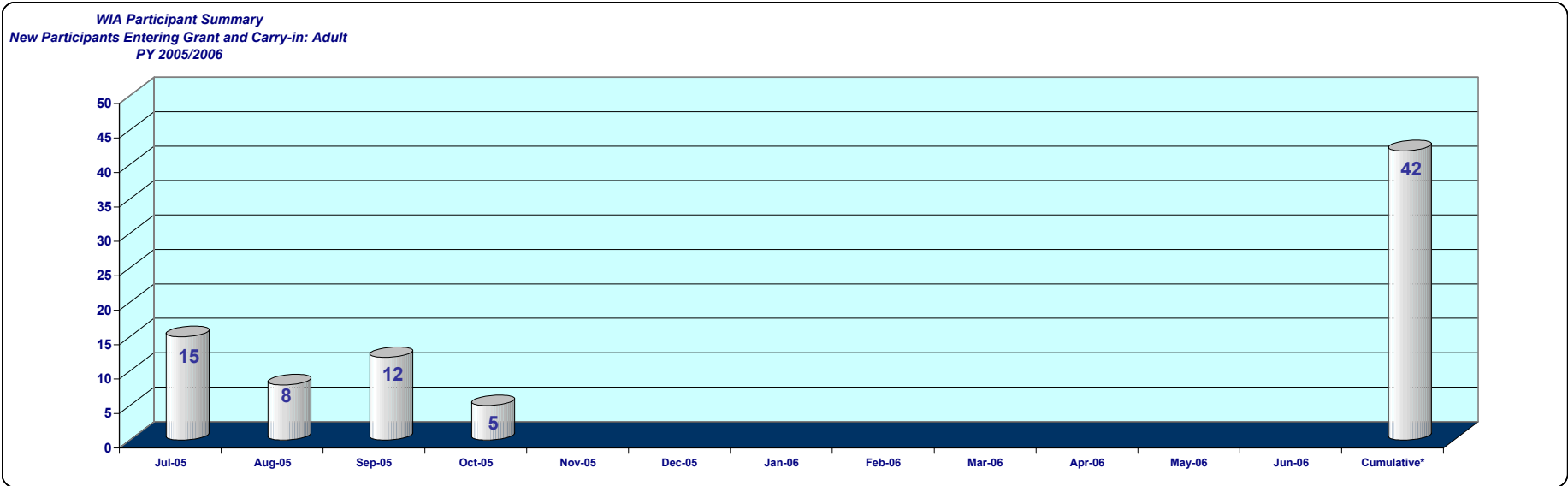
Data as of: 10/20/2005

	Adult		Dislocated Workers		Older Youth		Younger Youth		All Programs	
	Enrolled	% of Tot.	Enrolled	% of Tot.	Enrolled	% of Tot.	Enrolled	% of Tot.	Enrolled	% of Total
Total Participants	206	100.0%	164	100.0%	168	100.0%	591	100.0%	1,129	100.0%
Gender										
Female	157	76.2%	105	64.0%	119	70.8%	311	52.6%	692	61.3%
Male	49	23.8%	59	36.0%	49	29.2%	280	47.4%	437	38.7%
Age										
14 - 18	4	1.9%	0	0.0%	0	0.0%	591	100.0%	595	52.7%
19 - 21	27	13.1%	5	3.0%	168	100.0%	0	0.0%	200	17.7%
22 - 29	68	33.0%	35	21.3%	0	0.0%	0	0.0%	103	9.1%
30 - 44	74	35.9%	63	38.4%	0	0.0%	0	0.0%	137	12.1%
45 - 54	25	12.1%	44	26.8%	0	0.0%	0	0.0%	69	6.1%
55 - 61	7	3.4%	14	8.5%	0	0.0%	0	0.0%	21	1.9%
62 - 64	1	0.5%	2	1.2%	0	0.0%	0	0.0%	3	0.3%
65 and Older	1	0.5%	1	0.6%	0	0.0%	0	0.0%	2	0.2%
Race/Ethnicity										
America Indian/Alaskan Native	4	1.9%	3	1.8%	2	1.2%	8	1.4%	17	1.5%
Asian	24	11.7%	11	6.7%	28	16.7%	120	20.3%	183	16.2%
Black/African American	15	7.3%	9	5.5%	14	8.3%	48	8.1%	86	7.6%
Hawaiian Native/Other Pacific Islander	2	1.0%	5	3.0%	1	0.6%	4	0.7%	12	1.1%
White	75	36.4%	57	34.8%	20	11.9%	94	15.9%	246	21.8%
Ethnicity Hispanic or Lation	89	43.2%	87	53.0%	104	61.9%	346	58.5%	626	55.4%
Veterans Status										
Total Veterans	8	3.9%	15	9.1%	1	0.6%	0	0.0%	24	2.1%
Campaign Veteran	7	3.4%	12	7.3%	0	0.0%	0	0.0%	19	1.7%
Disabled Veteran	0	0.0%	2	1.2%	0	0.0%	0	0.0%	2	0.2%
Recently Separated Veteran	3	1.5%	3	1.8%	1	0.6%	0	0.0%	7	0.6%
Spouse of Veteran	2	1.0%	4	2.4%	0	0.0%	0	0.0%	6	0.5%
Labor Force Status				0.0%						
Employed	82	39.8%	13	7.9%	26	15.5%	22	3.7%	143	12.7%
Unemployed	124	60.2%	150	91.5%	142	84.5%	569	96.3%	985	87.2%
Public Assistance Status										
TANF	11	5.3%	5	3.0%	18	10.7%	209	35.4%	243	21.5%
GA, RCA, or SSI	5	2.4%	2	1.2%	7	4.2%	49	8.3%	63	5.6%
Pell Grant Recipient	17	8.3%	5	3.0%	5	3.0%	3	0.5%	30	2.7%
Food Stamps	46	22.3%	17	10.4%	33	19.6%	237	40.1%	333	29.5%
Education Status										
Student, High School or Less	6	2.9%	4	2.4%	0	0.0%	479	81.0%	489	43.3%
Student, Attending Post High School	57	27.7%	15	9.1%	7	4.2%	4	0.7%	83	7.4%
Out-of-School, High School Dropout	8	3.9%	10	6.1%	38	22.6%	20	3.4%	76	6.7%
Out-of-School, High School Grad, with Employ Difficulty	68	33.0%	71	43.3%	120	71.4%	87	14.7%	346	30.6%
Out-of-School, HSG, No Employ Diff. (Counted as In-School)	67	32.5%	64	39.0%	3	1.8%	1	0.2%	135	12.0%
Unemployment Insurance Status										
UI Claimant	24	11.7%	126	76.8%	3	1.8%	1	0.2%	154	13.6%
UI Exhaustee	11	5.3%	22	13.4%	1	0.6%	0	0.0%	34	3.0%
Barriers To Employment										
Disabled	1	0.5%	1	0.6%	11	6.5%	111	18.8%	124	11.0%
Limited Eng. Proficiency	1	0.5%	6	3.7%	11	6.5%	49	8.3%	67	5.9%
Single Parent	59	28.6%	25	15.2%	27	16.1%	18	3.0%	129	11.4%
Worker Profiling/Reemployment Services Referral	7	3.4%	12	7.3%	0	0.0%	0	0.0%	19	1.7%
Low Income	119	57.8%	55	33.5%	166	98.8%	559	94.6%	899	79.6%
Displaced Homemaker	1	0.5%	0	0.0%	1	0.6%	0	0.0%	2	0.2%
Offender	13	6.3%	3	1.8%	12	7.1%	44	7.4%	72	6.4%
Homeless	3	1.5%	3	1.8%	8	4.8%	9	1.5%	23	2.0%
Runaway Youth	0	0.0%	0	0.0%	4	2.4%	7	1.2%	11	1.0%
Pregnant/Parenting Youth	0	0.0%	0	0.0%	44	26.2%	38	6.4%	82	7.3%
Youth Needing Additional Assistance	0	0.0%	0	0.0%	165	98.2%	585	99.0%	750	66.4%
Basic Literacy Skills Deficient	79	38.3%	81	49.4%	156	92.9%	554	93.7%	870	77.1%
Substance Abuse	0	0.0%	0	0.0%	3	1.8%	20	3.4%	23	2.0%
Foster Youth	0	0.0%	0	0.0%	1	0.6%	22	3.7%	23	2.0%

WIA PARTICIPANT SUMMARY REPORT - ADULT
PY 2005/2006
Report Range 07/2005 to 10/2005

	ADULT												Part. Plan PY 05/06	% of Plan Attained	
	Jul-05	Aug-05	Sep-05	Oct-05	Nov-05	Dec-05	Jan-06	Feb-06	Mar-06	Apr-06	May-06	Jun-06			Cumulative*
Total Participants	186	194	206	182									213	317	67.2%
Participants Carried In	171	186	194	177									171	223	76.7%
New Participants Entering Grant	15	8	12	5									42	94	44.7%
Total Participants Exiting WI	0	0	31	0									31	98	31.6%
Entered Unsubsidized Employment	0	0	20	0									20	63	31.7%
Training Related	0	0	15	0									15		
Entered Military Service	0	0	0	0									0		
Entered Qualified Apprenticeship Program	0	0	0	0									0		
Entered Post-Secondary Education	0	0	0	0									0		
Entered Advanced Training	0	0	0	0									0		
Attained Recognized Certificate/Diploma/Degree	0	0	18	0									18		
Attained High School Diploma/GED	0	0	0	0									0		
Returned to Secondary School (Youth Only)	0	0	0	0									0		
Exits Excluded from Performance	0	0	2	0									2		
Other Exits	0	0	27	0									27	79	34.2%

Program Activities/Services Summary	Enrolled												Part. Plan PY 05/06	% of Plan Attained	
	Jul-05	Aug-05	Sep-05	Oct-05	Nov-05	Dec-05	Jan-06	Feb-06	Mar-06	Apr-06	May-06	Jun-06			Cumulative*
Core Services (Registered)	186	194	206	182									213	317	67.2%
Intensive Services	170	179	190	169									197	170	115.9%
Training Services	76	90	99	89									101	100	101.0%
Youth Services	0	0	0	0									0		
Concurrent Program Participants	9	10	12	10									12		
Individual Training Accounts	5	5	5	5									5		
Goals Set (Younger Youth Only)	0	0	0	0									0		



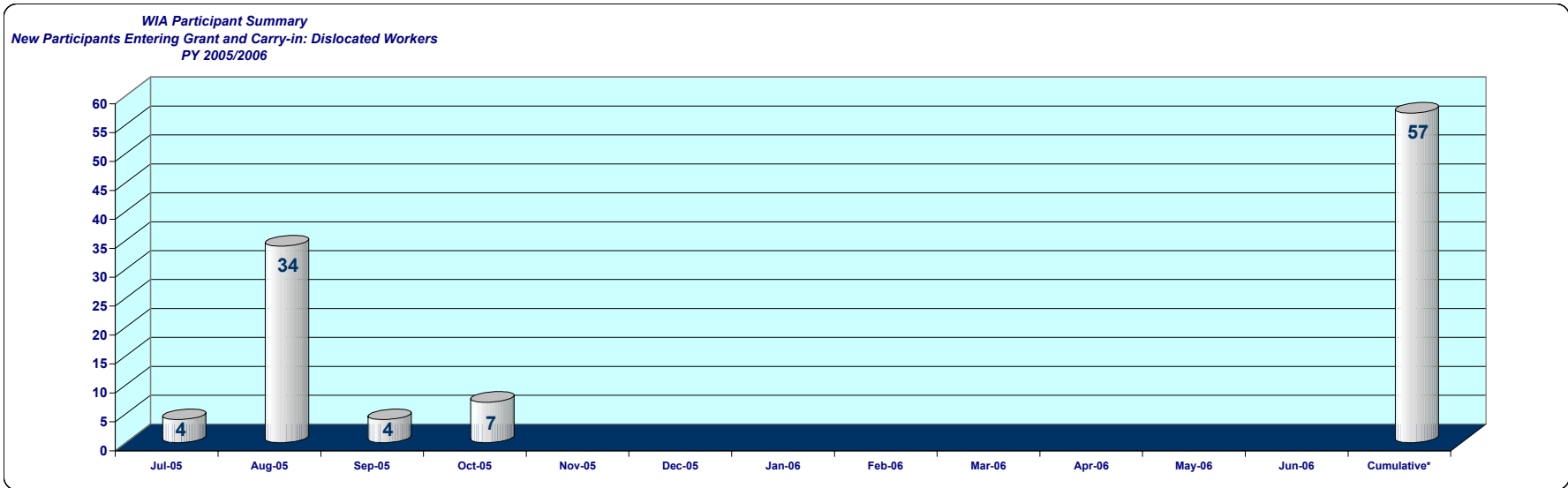
Monthly totals are produced on the 20th of the following month and are not updated on a monthly basis. Late data entry are not updated for previous months, see cumulative totals for current total.

WIA PARTICIPANT SUMMARY REPORT - DISLOCATED WORKER
PY 2005/2006
Report Range 07/2005 to 10/2005

	DISLOCATED WORKER												Cumulative*	Part. Plan PY 05/06	% of Plan Attained	
	Jul-05	Aug-05	Sep-05	Oct-05	Nov-05	Dec-05	Jan-06	Feb-06	Mar-06	Apr-06	May-06	Jun-06				
Total Participants	126	160	164	163										179	224	79.9%
Participants Carried In	122	126	160	156										122	161	75.8%
New Participants Entering Grant	4	34	4	7										57	63	90.48%

	Jul-05	Aug-05	Sep-05	Oct-05	Nov-05	Dec-05	Jan-06	Feb-06	Mar-06	Apr-06	May-06	Jun-06	Cumulative*	Part. Plan PY 05/06	% of Plan Attained
Total Participants Exiting WI	0	0	16	0									16	72	22.2%
Entered Unsubsidized Employment	0	0	14	0									14	54	25.9%
Training Related	0	0	9	0									9	28	32.1%
Entered Military Service	0	0	0	0									0		
Entered Qualified Apprenticeship Program	0	0	0	0									0		
Entered Post-Secondary Education	0	0	0	0									0		
Entered Advanced Training	0	0	0	0									0		
Attained Recognized Certificate/Diploma/Degree	0	0	11	0									11		
Attained High School Diploma/GED	0	0	0	0									0		
Returned to Secondary School (Youth Only)	0	0	0	0									0		
Exits Excluded from Performance	0	0	0	0									0		
Other Exits	0	0	15	0									15	55	27.3%

Program Activities/Services Summary	Enrolled												Cumulative*	Part. Plan PY 05/06	% of Plan Attained	
	Jul-05	Aug-05	Sep-05	Oct-05	Nov-05	Dec-05	Jan-06	Feb-06	Mar-06	Apr-06	May-06	Jun-06				
Core Services (Registered)	126	160	164	163										179	317	56.5%
Intensive Services	110	140	143	142										158	170	92.9%
Training Services	48	49	51	45										53	100	53.0%
Youth Services	0	0	0	0										0		
Concurrent Program Participants	10	36	37	48										49		
Individual Training Accounts	7	7	7	6										7		
Goals Set (Younger Youth Only)	0	0	0	0										0		



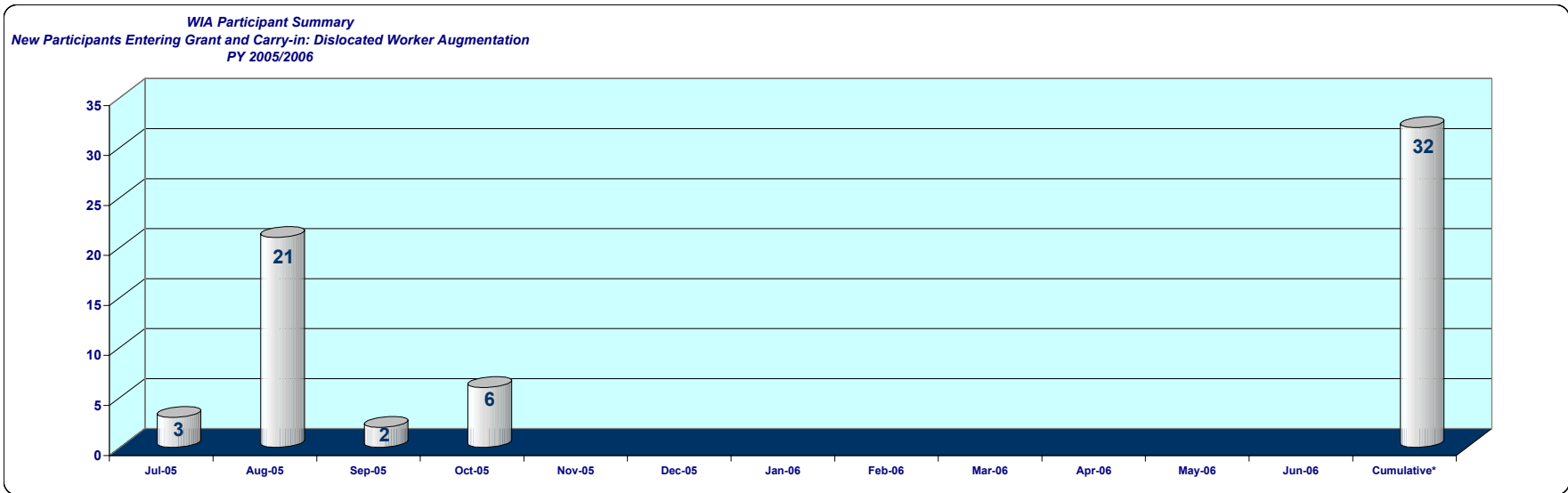
Monthly totals are produced on the 20th of the following month and are not updated on a monthly basis. Late data entry are not updated for previous months, see cumulative totals for current total.

WIA PARTICIPANT SUMMARY REPORT - DISLOCATED WORKER AUGMENTATION
PY 2005/2006
Report Range 07/2005 to 10/2005

	DISLOCATED WORKER												Cumulative*	Part. Plan PY 05/06	% of Plan Attained	
	Jul-05	Aug-05	Sep-05	Oct-05	Nov-05	Dec-05	Jan-06	Feb-06	Mar-06	Apr-06	May-06	Jun-06				
Total Participants	3	24	26	32										32	NA	
Participants Carried In	0	3	24	26										0	NA	
New Participants Entering Grant	3	21	2	6										32	NA	

	Jul-05	Aug-05	Sep-05	Oct-05	Nov-05	Dec-05	Jan-06	Feb-06	Mar-06	Apr-06	May-06	Jun-06	Cumulative*	Part. Plan PY 05/06	% of Plan Attained
Total Participants Exiting WI	0	0	0	0									0	NA	
Entered Unsubsidized Employment	0	0	0	0									0	NA	
Training Related	0	0	0	0									0	NA	
Entered Military Service	0	0	0	0									0		
Entered Qualified Apprenticeship Program	0	0	0	0									0		
Entered Post-Secondary Education	0	0	0	0									0		
Entered Advanced Training	0	0	0	0									0		
Attained Recognized Certificate/Diploma/Degree	0	0	0	0									0		
Attained High School Diploma/GED	0	0	0	0									0		
Returned to Secondary School (Youth Only)	0	0	0	0									0		
Exits Excluded from Performance	0	0	0	0									0		
Other Exits	0	0	0	0									0	NA	

Program Activities/Services Summary	Enrolled												Cumulative*	Part. Plan PY 05/06	% of Plan Attained	
	Jul-05	Aug-05	Sep-05	Oct-05	Nov-05	Dec-05	Jan-06	Feb-06	Mar-06	Apr-06	May-06	Jun-06				
Core Services (Registered)	3	23	25	30										30	NA	
Intensive Services	3	22	24	29										29	NA	
Training Services	0	0	0	0										0	NA	
Youth Services	0	0	0	0										0		
Concurrent Program Participants	3	24	26	32										32		
Individual Training Accounts	0	0	0	0										0		
Goals Set (Younger Youth Only)	0	0	0	0										0		



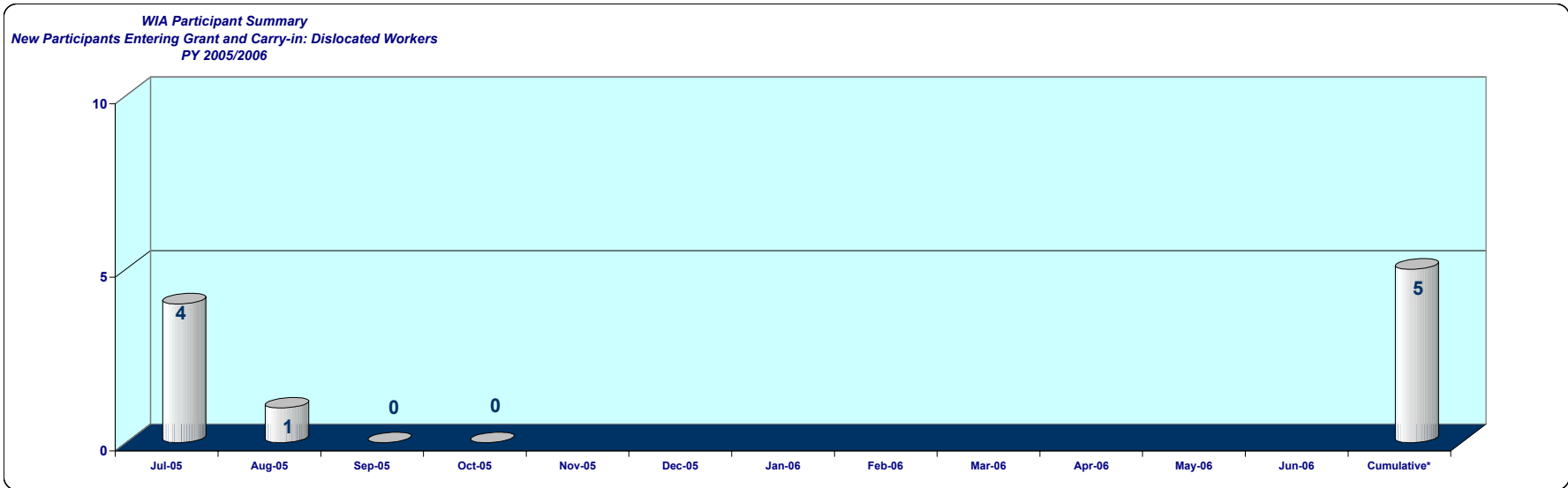
Monthly totals are produced on the 20th of the following month and are not updated on a monthly basis. Late data entry are not updated for previous months, see cumulative totals for current total.

WIA PARTICIPANT SUMMARY REPORT - NURSING PROGRAM
PY 2005/2006
Report Range 07/2005 to 10/2005

	DISLOCATED WORKER												Cumulative*	Part. Plan PY 05/06	% of Plan Attained	
	Jul-05	Aug-05	Sep-05	Oct-05	Nov-05	Dec-05	Jan-06	Feb-06	Mar-06	Apr-06	May-06	Jun-06				
Total Participants	27	28	28	28										28	NA	
Participants Carried In	23	27	28	28										23	NA	
New Participants Entering Grant	4	1	0	0										5	NA	

	Jul-05	Aug-05	Sep-05	Oct-05	Nov-05	Dec-05	Jan-06	Feb-06	Mar-06	Apr-06	May-06	Jun-06	Cumulative*	Part. Plan PY 05/06	% of Plan Attained
Total Participants Exiting WI	0	0	0	0									0	NA	
Entered Unsubsidized Employment	0	0	0	0									0	NA	
Training Related	0	0	0	0									0	NA	
Entered Military Service	0	0	0	0									0		
Entered Qualified Apprenticeship Program	0	0	0	0									0		
Entered Post-Secondary Education	0	0	0	0									0		
Entered Advanced Training	0	0	0	0									0		
Attained Recognized Certificate/Diploma/Degree	0	0	0	0									0		
Attained High School Diploma/GED	0	0	0	0									0		
Returned to Secondary School (Youth Only)	0	0	0	0									0		
Exits Excluded from Performance	0	0	0	0									0		
Other Exits	0	0	0	0									0	NA	

Program Activities/Services Summary	Enrolled												Cumulative*	Part. Plan PY 05/06	% of Plan Attained	
	Jul-05	Aug-05	Sep-05	Oct-05	Nov-05	Dec-05	Jan-06	Feb-06	Mar-06	Apr-06	May-06	Jun-06				
Core Services (Registered)	8	9	9	9										9	NA	
Intensive Services	24	25	25	25										25	NA	
Training Services	16	20	20	20										20	NA	
Youth Services	0	0	0	0										0		
Concurrent Program Participants	5	5	5	5										5		
Individual Training Accounts	0	0	0	0										0		
Goals Set (Younger Youth Only)	0	0	0	0										0		

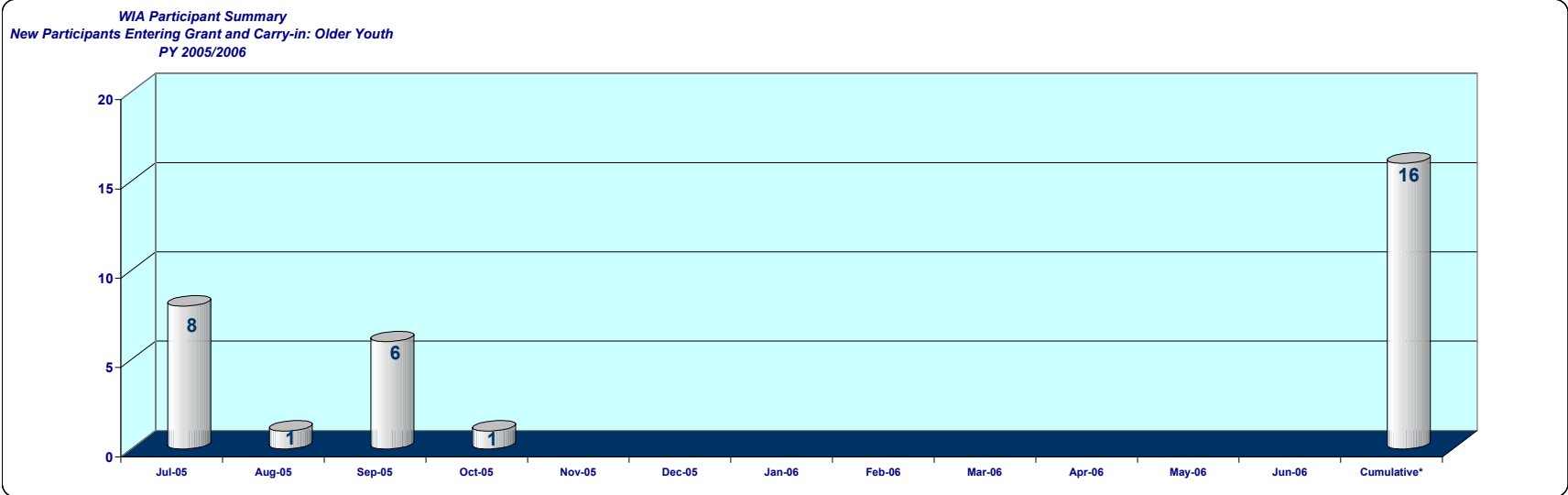


Monthly totals are produced on the 20th of the following month and are not updated on a monthly basis. Late data entry are not updated for previous months, see cumulative totals for current total.

WIA PARTICIPANT SUMMARY REPORT - OLDER YOUTH
PY 2005/2006
Report Range 07/2005 to 10/2005

	OLDER YOUTH												Cumulative*	Part. Plan PY 05/06	% of Plan Attained	
	Jul-05	Aug-05	Sep-05	Oct-05	Nov-05	Dec-05	Jan-06	Feb-06	Mar-06	Apr-06	May-06	Jun-06				
Total Participants	164	165	171	159										172	317	54.3%
Participants Carried In	156	164	165	158										156	378	41.3%
New Participants Entering Grant	8	1	6	1										16	35	45.7%
Total Participants Exiting WI	0	0	13	0										13		
Entered Unsubsidized Employment	0	0	12	0										12	33	36.4%
Training Related	0	0	7	0										7	15	46.7%
Entered Military Service	0	0	0	0										0		
Entered Qualified Apprenticeship Program	0	0	0	0										0		
Entered Post-Secondary Education	0	0	0	0										0	57	0.0%
Entered Advanced Training	0	0	0	0										0	10	0.0%
Attained Recognized Certificate/Diploma/Degree	0	0	10	0										10		
Attained High School Diploma/GED	0	0	0	0										0		
Returned to Secondary School (Youth Only)	0	0	0	0										0		
Exits Excluded from Performance	0	0	0	0										0		
Other Exits	0	0	13	0										13	60	21.7%

Program Activities/Services Summary	Enrolled												Cumulative*	Part. Plan PY 05/06	% of Plan Attained	
	Jul-05	Aug-05	Sep-05	Oct-05	Nov-05	Dec-05	Jan-06	Feb-06	Mar-06	Apr-06	May-06	Jun-06				
Core Services (Registered)	0	0	0	0										0		
Intensive Services	139	139	145	135										142		
Training Services	113	114	117	110										115		
Youth Services	159	160	166	154										163		
Concurrent Program Participants	65	65	70	64										67		
Individual Training Accounts	0	0	0	0										0		
Goals Set (Younger Youth Only)	0	0	0	0										0		

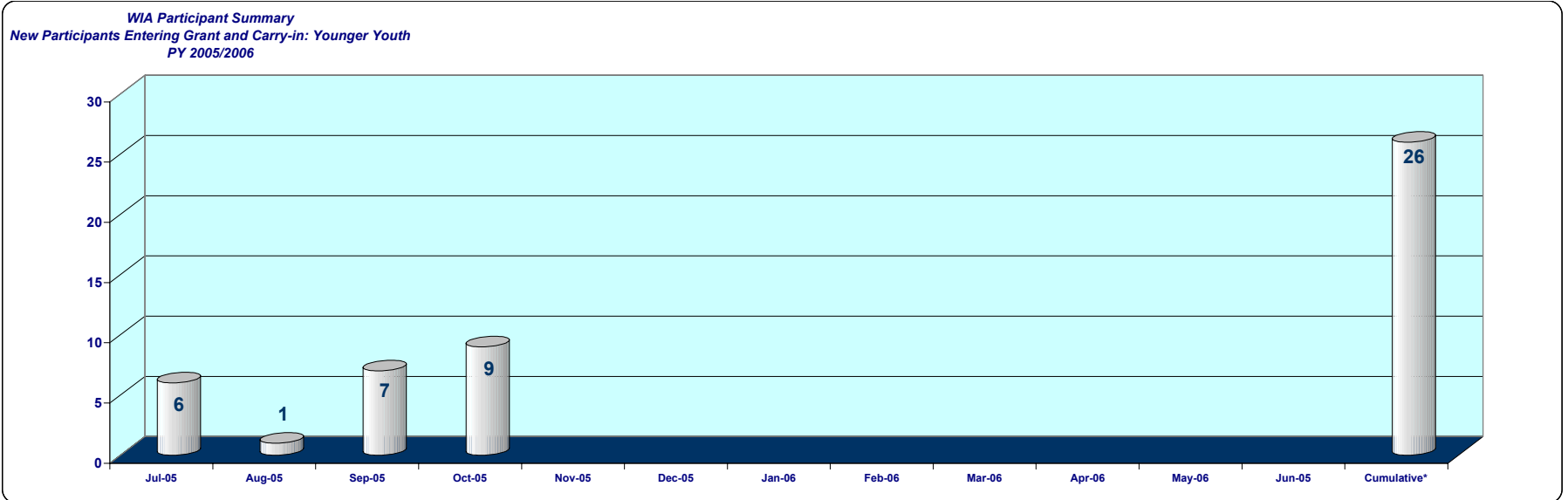


Monthly totals are produced on the 20th of the following month and are not updated on a monthly basis. Late data entry are not updated for previous months, see cumulative totals for current total.

WIA PARTICIPANT SUMMARY REPORT - Younger Youth
PY 2005/2006
Report Range 07/2005 to 10/2005

	Jul-05	Aug-05	Sep-05	Oct-05	Nov-05	Dec-05	Jan-06	Feb-06	Mar-06	Apr-06	May-06	Jun-05	Cumulative*	Participant Plan PY 04/05	% of Plan Attained
Total Participants	583	584	591	478									603	900	67.0%
Participants Carried In	577	583	584	469									577	618	93.4%
New Participants Entering Grant	6	1	7	9									26	282	9.2%
Total Participants Exiting WI	0	0	83	0									125		
Entered Unsubsidized Employment	0	0	8	0									15	80	18.8%
Training Related	0	0	12	0									19	20	95.0%
Entered Military Service	0	0	0	0									0	8	0.0%
Entered Qualified Apprenticeship Program	0	0	0	0									0	0	0.0%
Entered Post-Secondary Education	0	0	40	0									69	130	53.1%
Entered Advanced Training	0	0	1	0									2	5	40.0%
Attained Recognized Certificate/Diploma/Degree	0	0	75	0									109		
Attained High School Diploma/GED	0	0	75	0									107	450	23.8%
Returned to Secondary School (Youth Only)	0	0	6	0									9	15	60.0%
Exits Excluded from Performance	0	0	1	0									1		
Other Exits	0	0	82	0									123	40	307.5%

Program Activities/Services Summary	Enrolled														
Core Services (Registered)	0	0	0	1									1		
Intensive Services	97	99	100	96									103		
Training Services	79	79	82	77									83		
Youth Services	582	584	591	478									603		
Concurrent Program Participants	374	375	382	305									394		
Individual Training Accounts	0	0	0	0									0		
Goals Set (Younger Youth Only)	12	17	30	48									115		



Monthly totals are produced on the 20th of the following month and are not updated on a monthly basis. Late data entry are not updated for previous months, see cumulative totals for current total.

Code	Description	Adult		Youth		Dislocated Worker		Totals		Grand Total
		New	Carry Over	New	Carry Over	New	Carry Over	New	Carry Over	
CORE B	10 FOLLOW UP SRVCS CNSLNG	11	41			13	35	24	76	100
	11 STAFF ASSIST JOB DEVELOP	2	5				13	2	18	20
	12 STAFF ASSIST JOB REFER	5	7		1	6	24	11	32	43
	13 STAFF ASSIST JOB SRCH	7	33			40	44	47	77	124
	14 STAFF ASSIST WRKSH	1						1		1
	15 OTHER CORE SERVICES	7	1			5	2	12	3	15
	16 NON WIA FUNDED SERVICES									
	17 CO-ENROLLED CORE SERVICES									
	20 HURRICANE KATRINA									
INTENSIVE	30 CASE MGMNT FOR PARTIC	28	89	21	205	48	51	97	345	442
	31 COMPREHENSIVE ASSESSMNTS	6				5	10	11	10	21
	32 DEVELOP INDIV EMPL PLAN	10	2		1	6	6	16	9	25
	33 GROUP COUNSELING									
	34 EMPL EXPERIENCE			3	24			3	24	27
	35 INDIV CNSLNG CAREER PLAN				2				2	2
	36 OUT OF AREA JOB SEARCH									
	37 RELOCATION EXPENSES									
	38 SHORT TERM PREVOC SRVCS									
	39 INTERNSHIPS									
	40 OTHER INTENSIVE SRVCS	1	2				3	1	5	6
	41 NONWIA FUND INTENS SRVCS									
	42 CO-ENROLLED INTENSIVE SRVCS									
TRAINING	50 ADULT EDUCATION			1	35			1	35	36
	51 CUSTOMIZED TRAINING		2				1		3	3
	52 ENTREPRENEURIAL TRAINING									
	53 JOB READINESS TRAINING			5	11			5	11	16
	54 OCCUP SKILLS TRAINING	10	37	7	68	3	14	20	119	139
	55 ON THE JOB TRAINING	3	3			1		4	3	7
	56 PRIVATE SECTOR TRAINING									
	57 SKILL UPGRADNG RETRNG									
	58 WRKPLCE TRNG AND COOP ED									
	59 OTHER TRAINING SRVCS									
	60 NON-WIA FUNDED TRNG SRVCS	9	23			3	12	12	35	47
YOUTH	61 CO-ENROLLED TRAINING SRVCS									
	70 SUMMER RELATED				2				2	2
	71 EDUCATNL ACHVMNT SRVCS			45	525			45	525	570
	72 EMPLOYMENT SERVICES			12	227			12	227	239
	73 CITIZEN LEADERSHIP SRVCS				1				1	1
	74 OTHER YOUTH SERVICES									
	75 NONWIA FUNDED YOUTH SRVCS									
MISC.	76 CO-ENROLLED YOUTH SRVCS									
	80 OTHER JTPA									
	81 SUPPORTIVE SERVICES	33	81		15	50	49	83	145	228
	82 NEEDS RELATED PAYMENT									
	83 BREAK IN SERVICE									
	84 NON-WIA FUNDED MISC									
	85 CO-ENROLLED MISCELLANEOUS									
86 BRK IN SERV - HEALTH/MED										

WIA PARTICIPANT SUMMARY REPORT - ADULT

Report Period: 7/2005 to 10/2005

Data as of: 11/20/2005

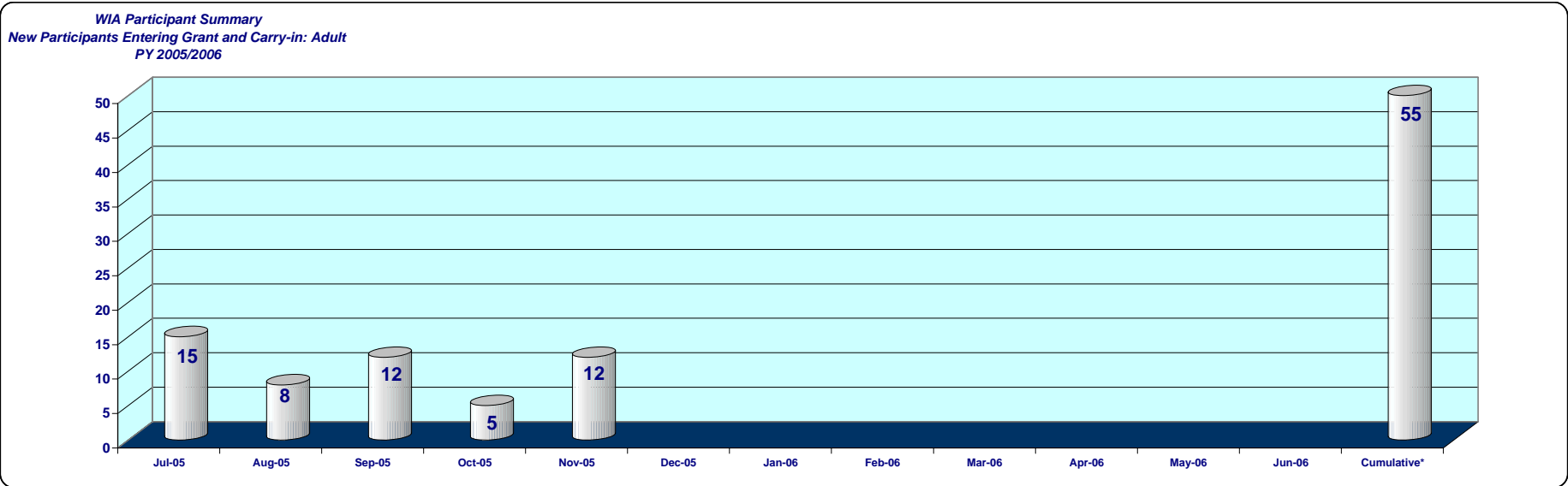
	Adult		Dislocated Workers		DW - Augmentation		Nursing Program		Older Youth		Younger Youth		All Programs	
	Enrolled	% of Tot.	Enrolled	% of Tot.					Enrolled	% of Tot.	Enrolled	% of Tot.	Enrolled	% of Total
Total Participants	206	100.0%	164	100.0%	32	100.0%	28	100.0%	168	100.0%	591	100.0%	1,129	100.0%
Gender														
Female	157	76.2%	105	64.0%	31	96.9%	24	85.7%	119	70.8%	311	52.6%	692	61.3%
Male	49	23.8%	59	36.0%	1	3.1%	1	3.6%	49	29.2%	280	47.4%	437	38.7%
Age														
14 - 18	4	1.9%	0	0.0%	0	0.0%	1	3.6%	0	0.0%	591	100.0%	595	52.7%
19 - 21	27	13.1%	5	3.0%	0	0.0%	3	10.7%	168	100.0%	0	0.0%	200	17.7%
22 - 29	68	33.0%	35	21.3%	3	9.4%	8	28.6%	0	0.0%	0	0.0%	103	9.1%
30 - 44	74	35.9%	63	38.4%	15	46.9%	14	50.0%	0	0.0%	0	0.0%	137	12.1%
45 - 54	25	12.1%	44	26.8%	11	34.4%	2	7.1%	0	0.0%	0	0.0%	69	6.1%
55 - 61	7	3.4%	14	8.5%	2	6.3%	0	0.0%	0	0.0%	0	0.0%	21	1.9%
62 - 64	1	0.5%	2	1.2%	1	3.1%	0	0.0%	0	0.0%	0	0.0%	3	0.3%
65 and Older	1	0.5%	1	0.6%	0	0.0%	0	0.0%	0	0.0%	0	0.0%	2	0.2%
Race/Ethnicity														
America Indian/Alaskan Native	4	1.9%	3	1.8%	2	6.3%	0	0.0%	2	1.2%	8	1.4%	17	1.5%
Asian	24	11.7%	11	6.7%	3	9.4%	2	7.1%	28	16.7%	120	20.3%	183	16.2%
Black/African American	15	7.3%	9	5.5%	1	3.1%	0	0.0%	14	8.3%	48	8.1%	86	7.6%
Hawaiian Native/Other Pacific Islander	2	1.0%	5	3.0%	0	0.0%	0	0.0%	1	0.6%	4	0.7%	12	1.1%
White	75	36.4%	57	34.8%	5	15.6%	16	57.1%	20	11.9%	94	15.9%	246	21.8%
Ethnicity Hispanic or Lation	89	43.2%	87	53.0%	22	68.8%	10	35.7%	104	61.9%	346	58.5%	626	55.4%
Veterans Status														
Total Veterans	8	3.9%	15	9.1%	1	3.1%	3	10.7%	1	0.6%	0	0.0%	24	2.1%
Campaign Veteran	7	3.4%	12	7.3%	1	3.1%	2	7.1%	0	0.0%	0	0.0%	19	1.7%
Disabled Veteran	0	0.0%	2	1.2%	0	0.0%	0	0.0%	0	0.0%	0	0.0%	2	0.2%
Recently Separated Veteran	3	1.5%	3	1.8%	0	0.0%	1	3.6%	1	0.6%	0	0.0%	7	0.6%
Spouse of Veteran	2	1.0%	4	2.4%	1	3.1%	0	0.0%	0	0.0%	0	0.0%	6	0.5%
Labor Force Status								0.0%						
Employed	82	39.8%	13	7.9%	0	0.0%	14	50.0%	26	15.5%	22	3.7%	143	12.7%
Unemployed	124	60.2%	150	91.5%	32	100.0%	14	50.0%	142	84.5%	569	96.3%	985	87.2%
Public Assistance Status														
TANF	11	5.3%	5	3.0%	1	3.1%	3	10.7%	18	10.7%	209	35.4%	243	21.5%
GA, RCA, or SSI	5	2.4%	2	1.2%	0	0.0%	0	0.0%	7	4.2%	49	8.3%	63	5.6%
Pell Grant Recipient	17	8.3%	5	3.0%	0	0.0%	7	25.0%	5	3.0%	3	0.5%	30	2.7%
Food Stamps	46	22.3%	17	10.4%	1	3.1%	6	21.4%	33	19.6%	237	40.1%	333	29.5%
Education Status														
Student, High School or Less	6	2.9%	4	2.4%	1	3.1%	0	0.0%	0	0.0%	479	81.0%	489	43.3%
Student, Attending Post High School	57	27.7%	15	9.1%	4	12.5%	20	71.4%	7	4.2%	4	0.7%	83	7.4%
Out-of-School, High School Dropout	8	3.9%	10	6.1%	0	0.0%	0	0.0%	38	22.6%	20	3.4%	76	6.7%
Out-of-School, High School Grad, with Employ Difficulty	68	33.0%	71	43.3%	27	84.4%	1	3.6%	120	71.4%	87	14.7%	346	30.6%
Out-of-School, HSG, No Employ Diff. (Counted as In-School)	67	32.5%	64	39.0%	0	0.0%	7	25.0%	3	1.8%	1	0.2%	135	12.0%
Unemployment Insurance Status														
UI Claimant	24	11.7%	126	76.8%	29	90.6%	2	7.1%	3	1.8%	1	0.2%	154	13.6%
UI Exhaustee	11	5.3%	22	13.4%	0	0.0%	0	0.0%	1	0.6%	0	0.0%	34	3.0%
Barriers To Employment														
Disabled	1	0.5%	1	0.6%	0	0.0%	0	0.0%	11	6.5%	111	18.8%	124	11.0%
Limited Eng. Proficiency	1	0.5%	6	3.7%	0	0.0%	0	0.0%	11	6.5%	49	8.3%	67	5.9%
Single Parent	59	28.6%	25	15.2%	4	12.5%	15	53.6%	27	16.1%	18	3.0%	129	11.4%
Worker Profiling/Reemployment Services Referral	7	3.4%	12	7.3%	0	0.0%	0	0.0%	0	0.0%	0	0.0%	19	1.7%
Low Income	119	57.8%	55	33.5%	3	9.4%	17	60.7%	166	98.8%	559	94.6%	899	79.6%
Displaced Homemaker	1	0.5%	0	0.0%	0	0.0%	0	0.0%	1	0.6%	0	0.0%	2	0.2%
Offender	13	6.3%	3	1.8%	0	0.0%	1	3.6%	12	7.1%	44	7.4%	72	6.4%
Homeless	3	1.5%	3	1.8%	0	0.0%	0	0.0%	8	4.8%	9	1.5%	23	2.0%
Runaway Youth	0	0.0%	0	0.0%	0	0.0%	0	0.0%	4	2.4%	7	1.2%	11	1.0%
Pregnant/Parenting Youth	0	0.0%	0	0.0%	0	0.0%	0	0.0%	44	26.2%	38	6.4%	82	7.3%
Youth Needing Additional Assistance	0	0.0%	0	0.0%	0	0.0%	0	0.0%	165	98.2%	585	99.0%	750	66.4%
Basic Literacy Skills Deficient	79	38.3%	81	49.4%	0	0.0%	6	21.4%	156	92.9%	554	93.7%	870	77.1%
Substance Abuse	0	0.0%	0	0.0%	0	0.0%	0	0.0%	3	1.8%	20	3.4%	23	2.0%
Foster Youth	0	0.0%	0	0.0%	0	0.0%	0	0.0%	1	0.6%	22	3.7%	23	2.0%

WIA PARTICIPANT SUMMARY REPORT - ADULT
PY 2005/2006
Report Range 07/2005 to 11/2005

	ADULT												Cumulative*	Part. Plan PY 05/06	% of Plan Attained
	Jul-05	Aug-05	Sep-05	Oct-05	Nov-05	Dec-05	Jan-06	Feb-06	Mar-06	Apr-06	May-06	Jun-06			
Total Participants	186	194	206	182	196								227	317	71.6%
Participants Carried In	171	186	194	177	184								172	223	77.1%
New Participants Entering Grant	15	8	12	5	12								55	94	58.5%

Total Participants Exiting WI	Jul-05	Aug-05	Sep-05	Oct-05	Nov-05	Dec-05	Jan-06	Feb-06	Mar-06	Apr-06	May-06	Jun-06	Cumulative*	Part. Plan PY 05/06	% of Plan Attained
Entered Unsubsidized Employment	0	0	31	0	0								31	98	31.6%
Training Related	0	0	20	0	0								20	63	31.7%
Entered Military Service	0	0	15	0	0								15		
Entered Qualified Apprenticeship Program	0	0	0	0	0								0		
Entered Post-Secondary Education	0	0	0	0	0								0		
Entered Advanced Training	0	0	0	0	0								0		
Attained Recognized Certificate/Diploma/Degree	0	0	18	0	0								18		
Attained High School Diploma/GED	0	0	0	0	0								0		
Returned to Secondary School (Youth Only)	0	0	0	0	0								0		
Exits Excluded from Performance	0	0	2	0	0								2		
Other Exits	0	0	27	0	0								27	79	34.2%

Program Activities/Services Summary	Enrolled												Cumulative*	Part. Plan PY 05/06	% of Plan Attained
Core Services (Registered)	186	194	206	182	196								227	317	71.6%
Intensive Services	170	179	190	169	182								210	170	123.5%
Training Services	76	90	99	89	95								107	100	107.0%
Youth Services	0	0	0	0	0								0		
Concurrent Program Participants	9	10	12	10	12								14		
Individual Training Accounts	5	5	5	5	5								5		
Goals Set (Younger Youth Only)	0	0	0	0	0								0		



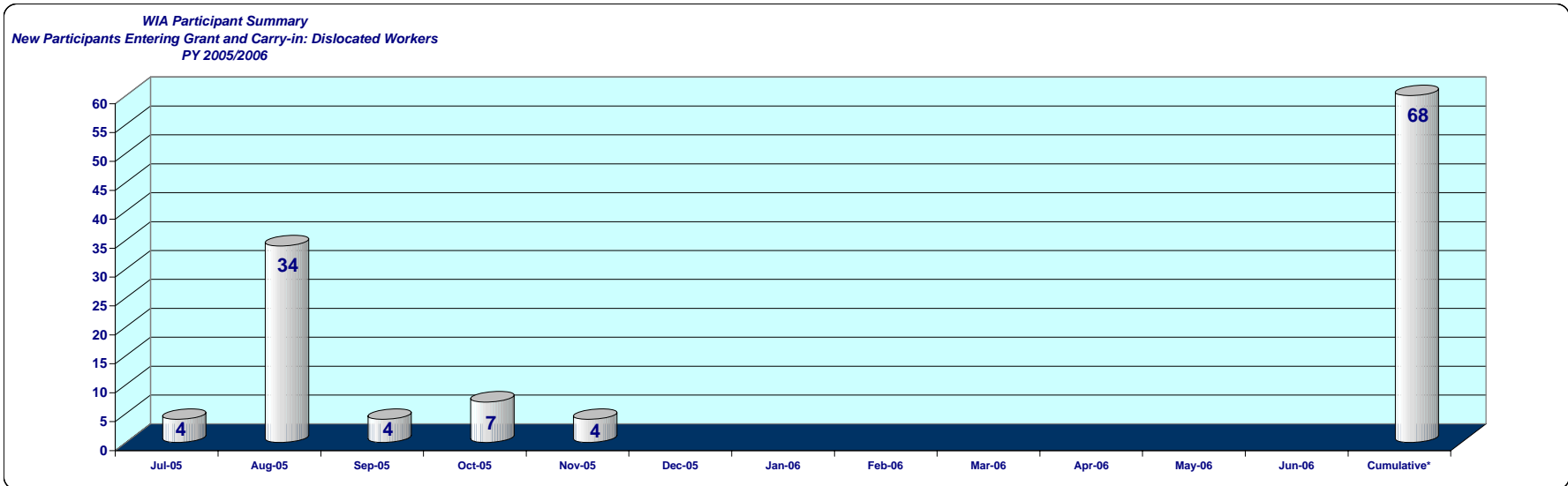
Monthly totals are produced on the 20th of the following month and are not updated on a monthly basis. Late data entry are not updated for previous months, see cumulative totals for current total.

WIA PARTICIPANT SUMMARY REPORT - DISLOCATED WORKER
PY 2005/2006
Report Range 07/2005 to 11/2005

	DISLOCATED WORKER												Cumulative*	Part. Plan PY 05/06	% of Plan Attained	
	Jul-05	Aug-05	Sep-05	Oct-05	Nov-05	Dec-05	Jan-06	Feb-06	Mar-06	Apr-06	May-06	Jun-06				
Total Participants	126	160	164	163	174									190	224	84.8%
Participants Carried In	122	126	160	156	170									122	161	75.8%
New Participants Entering Grant	4	34	4	7	4									68	63	107.94%

	Jul-05	Aug-05	Sep-05	Oct-05	Nov-05	Dec-05	Jan-06	Feb-06	Mar-06	Apr-06	May-06	Jun-06	Cumulative*	Part. Plan PY 05/06	% of Plan Attained
Total Participants Exiting WI	0	0	16	0	0								16	72	22.2%
Entered Unsubsidized Employment	0	0	14	0	0								14	54	25.9%
Training Related	0	0	9	0	0								9	28	32.1%
Entered Military Service	0	0	0	0	0								0		
Entered Qualified Apprenticeship Program	0	0	0	0	0								0		
Entered Post-Secondary Education	0	0	0	0	0								0		
Entered Advanced Training	0	0	0	0	0								0		
Attained Recognized Certificate/Diploma/Degree	0	0	11	0	0								11		
Attained High School Diploma/GED	0	0	0	0	0								0		
Returned to Secondary School (Youth Only)	0	0	0	0	0								0		
Exits Excluded from Performance	0	0	0	0	0								0		
Other Exits	0	0	15	0	0								15	55	27.3%

Program Activities/Services Summary	Enrolled												Cumulative*	Part. Plan PY 05/06	% of Plan Attained	
	Jul-05	Aug-05	Sep-05	Oct-05	Nov-05	Dec-05	Jan-06	Feb-06	Mar-06	Apr-06	May-06	Jun-06				
Core Services (Registered)	126	160	164	163	174									190	317	59.9%
Intensive Services	110	140	143	142	153									169	170	99.4%
Training Services	48	49	51	45	46									54	100	54.0%
Youth Services	0	0	0	0	0									0		
Concurrent Program Participants	10	36	37	48	57									58		
Individual Training Accounts	7	7	7	6	6									7		
Goals Set (Younger Youth Only)	0	0	0	0	0									0		



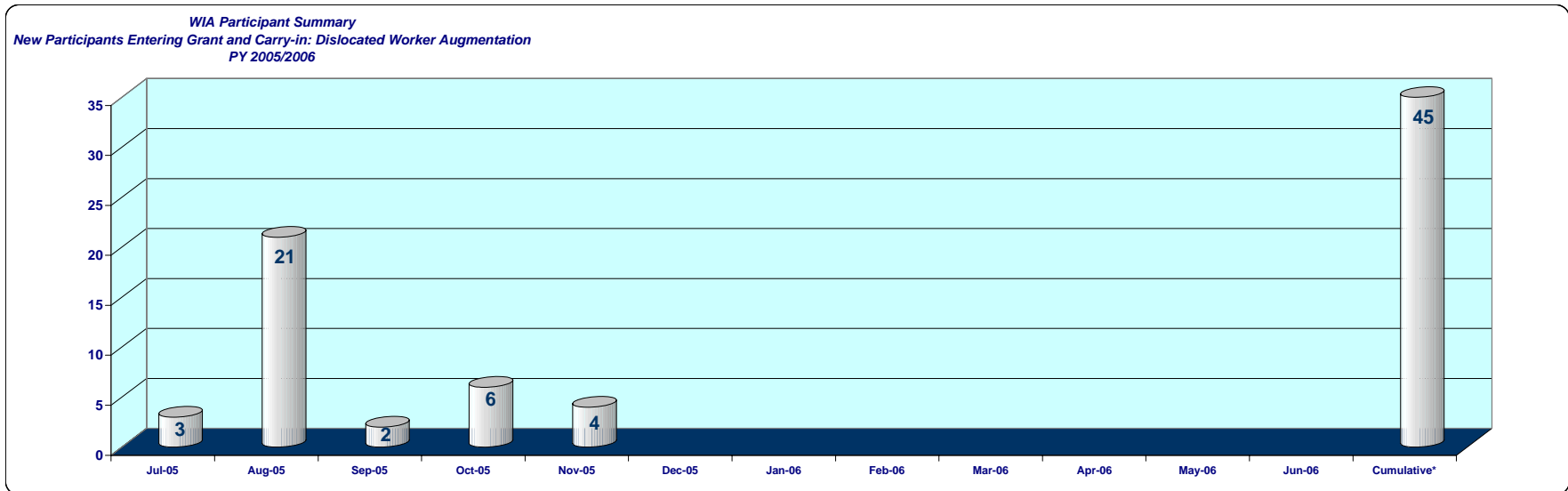
Monthly totals are produced on the 20th of the following month and are not updated on a monthly basis. Late data entry are not updated for previous months, see cumulative totals for current total.

WIA PARTICIPANT SUMMARY REPORT - DISLOCATED WORKER AUGMENTATION
PY 2005/2006
Report Range 07/2005 to 11/2005

	DISLOCATED WORKER												Cumulative*	Part. Plan PY 05/06	% of Plan Attained	
	Jul-05	Aug-05	Sep-05	Oct-05	Nov-05	Dec-05	Jan-06	Feb-06	Mar-06	Apr-06	May-06	Jun-06				
Total Participants	3	24	26	32	45									45	NA	
Participants Carried In	0	3	24	26	41									0	NA	
New Participants Entering Grant	3	21	2	6	4									45	NA	

	Jul-05	Aug-05	Sep-05	Oct-05	Nov-05	Dec-05	Jan-06	Feb-06	Mar-06	Apr-06	May-06	Jun-06	Cumulative*	Part. Plan PY 05/06	% of Plan Attained
Total Participants Exiting WI	0	0	0	0	0								0	NA	
Entered Unsubsidized Employment	0	0	0	0	0								0	NA	
Training Related	0	0	0	0	0								0	NA	
Entered Military Service	0	0	0	0	0								0		
Entered Qualified Apprenticeship Program	0	0	0	0	0								0		
Entered Post-Secondary Education	0	0	0	0	0								0		
Entered Advanced Training	0	0	0	0	0								0		
Attained Recognized Certificate/Diploma/Degree	0	0	0	0	0								0		
Attained High School Diploma/GED	0	0	0	0	0								0		
Returned to Secondary School (Youth Only)	0	0	0	0	0								0		
Exits Excluded from Performance	0	0	0	0	0								0		
Other Exits	0	0	0	0	0								0	NA	

	Enrolled												Cumulative*	Part. Plan PY 05/06	% of Plan Attained	
Program Activities/Services Summary																
Core Services (Registered)	3	23	25	30	40									40	NA	
Intensive Services	3	22	24	29	39									39	NA	
Training Services	0	0	0	0	0									0	NA	
Youth Services	0	0	0	0	0									0		
Concurrent Program Participants	3	24	26	32	44									44		
Individual Training Accounts	0	0	0	0	0									0		
Goals Set (Younger Youth Only)	0	0	0	0	0									0		



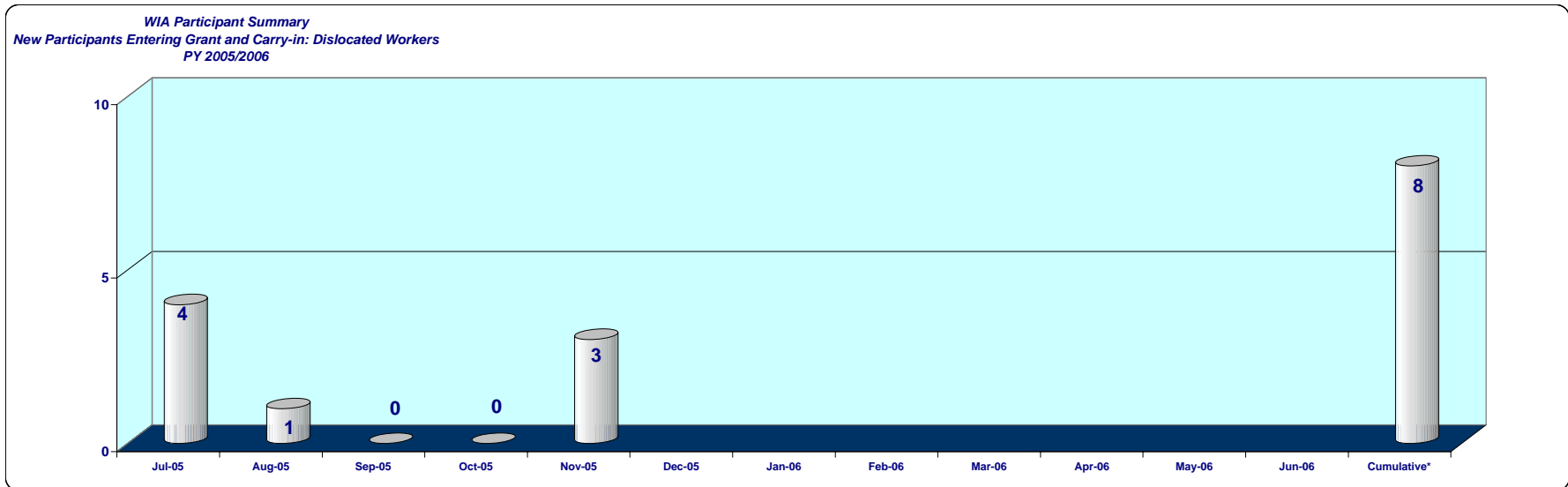
Monthly totals are produced on the 20th of the following month and are not updated on a monthly basis. Late data entry are not updated for previous months, see cumulative totals for current total.

WIA PARTICIPANT SUMMARY REPORT - NURSING PROGRAM
PY 2005/2006
Report Range 07/2005 to 11/2005

	Nursing Program												Part. Plan PY 05/06	% of Plan Attained	
	Jul-05	Aug-05	Sep-05	Oct-05	Nov-05	Dec-05	Jan-06	Feb-06	Mar-06	Apr-06	May-06	Jun-06			Cumulative*
Total Participants	27	28	28	28	32								32	NA	
Participants Carried In	23	27	28	28	29								24	NA	
New Participants Entering Grant	4	1	0	0	3								8	NA	

	Jul-05	Aug-05	Sep-05	Oct-05	Nov-05	Dec-05	Jan-06	Feb-06	Mar-06	Apr-06	May-06	Jun-06	Cumulative*	Part. Plan PY 05/06	% of Plan Attained
Total Participants Exiting WI	0	0	0	0	0								0	NA	
Entered Unsubsidized Employment	0	0	0	0	0								0	NA	
Training Related	0	0	0	0	0								0	NA	
Entered Military Service	0	0	0	0	0								0		
Entered Qualified Apprenticeship Program	0	0	0	0	0								0		
Entered Post-Secondary Education	0	0	0	0	0								0		
Entered Advanced Training	0	0	0	0	0								0		
Attained Recognized Certificate/Diploma/Degree	0	0	0	0	0								0		
Attained High School Diploma/GED	0	0	0	0	0								0		
Returned to Secondary School (Youth Only)	0	0	0	0	0								0		
Exits Excluded from Performance	0	0	0	0	0								0		
Other Exits	0	0	0	0	0								0	NA	

	Enrolled														
Program Activities/Services Summary															
Core Services (Registered)	8	9	9	9	13								13	NA	
Intensive Services	24	25	25	25	29								29	NA	
Training Services	16	20	20	20	20								20	NA	
Youth Services	0	0	0	0	0								0		
Concurrent Program Participants	5	5	5	5	5								5		
Individual Training Accounts	0	0	0	0	0								0		
Goals Set (Younger Youth Only)	0	0	0	0	0								0		

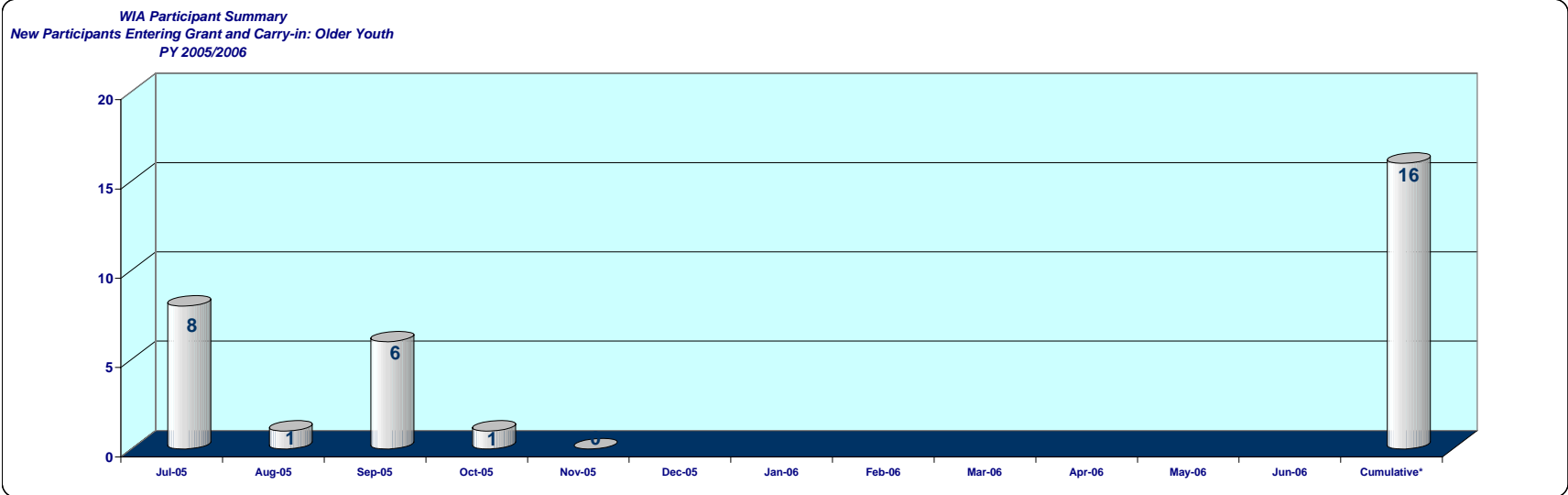


Monthly totals are produced on the 20th of the following month and are not updated on a monthly basis. Late data entry are not updated for previous months, see cumulative totals for current total.

WIA PARTICIPANT SUMMARY REPORT - OLDER YOUTH
PY 2005/2006
Report Range 07/2005 to 11/2005

	OLDER YOUTH												Cumulative*	Part. Plan PY 05/06	% of Plan Attained	
	Jul-05	Aug-05	Sep-05	Oct-05	Nov-05	Dec-05	Jan-06	Feb-06	Mar-06	Apr-06	May-06	Jun-06				
Total Participants	164	165	171	159	159									172	317	54.3%
Participants Carried In	156	164	165	158	159									156	378	41.3%
New Participants Entering Grant	8	1	6	1	0									16	35	45.7%
Total Participants Exiting WI	0	0	13	0	0									13		
Entered Unsubsidized Employment	0	0	12	0	0									12	33	36.4%
Training Related	0	0	7	0	0									7	15	46.7%
Entered Military Service	0	0	0	0	0									0		
Entered Qualified Apprenticeship Program	0	0	0	0	0									0		
Entered Post-Secondary Education	0	0	0	0	0									0	57	0.0%
Entered Advanced Training	0	0	0	0	0									0	10	0.0%
Attained Recognized Certificate/Diploma/Degree	0	0	10	0	0									10		
Attained High School Diploma/GED	0	0	0	0	0									0		
Returned to Secondary School (Youth Only)	0	0	0	0	0									0		
Exits Excluded from Performance	0	0	0	0	0									0		
Other Exits	0	0	13	0	0									13	60	21.7%

Program Activities/Services Summary	Enrolled												Cumulative*	Part. Plan PY 05/06	% of Plan Attained	
	Jul-05	Aug-05	Sep-05	Oct-05	Nov-05	Dec-05	Jan-06	Feb-06	Mar-06	Apr-06	May-06	Jun-06				
Core Services (Registered)	0	0	0	0	0									0		
Intensive Services	139	139	145	135	136									147		
Training Services	113	114	117	110	110									119		
Youth Services	159	160	166	154	154									167		
Concurrent Program Participants	65	65	70	64	64									70		
Individual Training Accounts	0	0	0	0	0									0		
Goals Set (Younger Youth Only)	0	0	0	0	0									0		

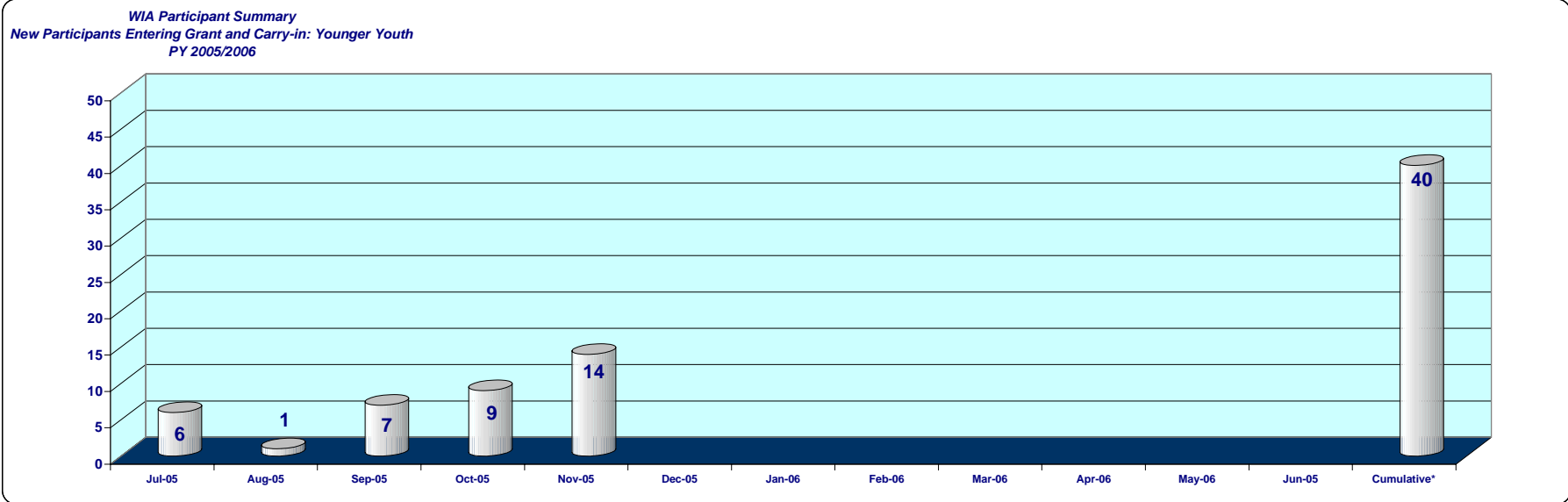


Monthly totals are produced on the 20th of the following month and are not updated on a monthly basis. Late data entry are not updated for previous months, see cumulative totals for current total.

WIA PARTICIPANT SUMMARY REPORT - Younger Youth
PY 2005/2006
Report Range 07/2005 to 11/2005

	Jul-05	Aug-05	Sep-05	Oct-05	Nov-05	Dec-05	Jan-06	Feb-06	Mar-06	Apr-06	May-06	Jun-05	Cumulative*	Participant Plan PY 04/05	% of Plan Attained
Total Participants	583	584	591	478	491								517	900	57.4%
Participants Carried In	577	583	584	469	477								577	618	93.4%
New Participants Entering Grant	6	1	7	9	14								40	282	14.2%
Total Participants Exiting WI	0	0	83	0	0								126		
Entered Unsubsidized Employment	0	0	8	0	0								15	80	18.8%
Training Related	0	0	12	0	0								19	20	95.0%
Entered Military Service	0	0	0	0	0								0	8	0.0%
Entered Qualified Apprenticeship Program	0	0	0	0	0								0	0	0.0%
Entered Post-Secondary Education	0	0	40	0	0								70	130	53.8%
Entered Advanced Training	0	0	1	0	0								2	5	40.0%
Attained Recognized Certificate/Diploma/Degree	0	0	75	0	0								110		
Attained High School Diploma/GED	0	0	75	0	0								108	450	24.0%
Returned to Secondary School (Youth Only)	0	0	6	0	0								9	15	60.0%
Exits Excluded from Performance	0	0	1	0	0								1		
Other Exits	0	0	82	0	0								124	40	310.0%

Program Activities/Services Summary	Enrolled														
Core Services (Registered)	0	0	0	1	1								1		
Intensive Services	97	99	100	96	96								103		
Training Services	79	79	82	77	79								85		
Youth Services	582	584	591	478	491								617		
Concurrent Program Participants	374	375	382	305	312								401		
Individual Training Accounts	0	0	0	0	0								0		
Goals Set (Younger Youth Only)	12	17	30	48	57								172		



Monthly totals are produced on the 20th of the following month and are not updated on a monthly basis. Late data entry are not updated for previous months, see cumulative totals for current total.

Code	Description	Adult		Youth		Dislocated Worker		Totals		Grand Total
		New	Carry Over	New	Carry Over	New	Carry Over	New	Carry Over	
CORE B	10 FOLLOW UP SRVCS CNSLNG	11	45			39	41	50	86	136
	11 STAFF ASSIST JOB DEVELOP	2	4				13	2	17	19
	12 STAFF ASSIST JOB REFER	6	6		1	7	24	13	31	44
	13 STAFF ASSIST JOB SRCH	12	30			40	45	52	75	127
	14 STAFF ASSIST WRKSHHP	1						1		1
	15 OTHER CORE SERVICES	13	2			5	2	18	4	22
	16 NON WIA FUNDED SERVICES									
	17 CO-ENROLLED CORE SERVICES									
	20 HURRICANE KATRINA									
INTENSIVE	30 CASE MGMNT FOR PARTIC	33	93	21	203	60	52	114	348	462
	31 COMPREHENSIVE ASSESSMNTS	9				5	10	14	10	24
	32 DEVELOP INDIV EMPL PLAN	16	3		1	5	6	21	10	31
	33 GROUP COUNSELING									
	34 EMPL EXPERIENCE			3	22			3	22	25
	35 INDIV CNSLNG CAREER PLAN				2				2	2
	36 OUT OF AREA JOB SEARCH									
	37 RELOCATION EXPENSES									
	38 SHORT TERM PREVOC SRVCS									
	39 INTERNSHIPS									
	40 OTHER INTENSIVE SRVCS	2	2			1	3	3	5	8
	41 NONWIA FUND INTENS SRVCS									
TRAINING	42 CO-ENROLLED INTENSIVE SRVCS									
	50 ADULT EDUCATION			1	32			1	32	33
	51 CUSTOMIZED TRAINING		2				1		3	3
	52 ENTREPRENEURIAL TRAINING									
	53 JOB READINESS TRAINING			5	11			5	11	16
	54 OCCUP SKILLS TRAINING	11	37	8	69	3	12	22	118	140
	55 ON THE JOB TRAINING	7	2			1		8	2	10
	56 PRIVATE SECTOR TRAINING									
	57 SKILL UPGRADNG RETRNG									
	58 WRKPLCE TRNG AND COOP ED									
	59 OTHER TRAINING SRVCS									
	60 NON-WIA FUNDED TRNG SRVCS	10	22			4	10	14	32	46
YOUTH	61 CO-ENROLLED TRAINING SRVCS									
	70 SUMMER RELATED			1	2			1	2	3
	71 EDUCATNL ACHVMNT SRVCS			61	486			61	486	547
	72 EMPLOYMENT SERVICES			17	214			17	214	231
	73 CITIZEN LEADERSHIP SRVCS				1				1	1
	74 OTHER YOUTH SERVICES									
	75 NONWIA FUNDED YOUTH SRVCS									
	76 CO-ENROLLED YOUTH SRVCS									
MISC.	80 OTHER JTPA									
	81 SUPPORTIVE SERVICES	39	80		14	58	46	97	140	237
	82 NEEDS RELATED PAYMENT									
	83 BREAK IN SERVICE									
	84 NON-WIA FUNDED MISC									
	85 CO-ENROLLED MISCELLANEOUS									
86 BRK IN SERV - HEALTH/MED										
TOTAL		172	328	117	1058	228	265	517	1651	2168

WIA PARTICIPANT SUMMARY REPORT - ADULT
Report Period: 7/2005 to 11/2005

	Adult		Dislocated Workers		DW - Augmentation		Nursing Program		Older Youth		Younger Youth		All Programs	
	Enrolled	% of Tot.	Enrolled	% of Tot.	Enrolled	% of Tot.	Enrolled	% of Tot.	Enrolled	% of Tot.	Enrolled	% of Tot.	Enrolled	% of Total
Total Participants	227	100.0%	190	100.0%	45	100.0%	32	100.0%	172	100.0%	491	100.0%	1,080	100.0%
Gender														
Female	169	74.4%	127	66.8%	43	95.6%	26	81.3%	121	70.3%	253	51.5%	670	62.0%
Male	58	25.6%	63	33.2%	2	4.4%	6	18.8%	51	29.7%	238	48.5%	410	38.0%
Age														
14 - 18	4	1.8%	0	0.0%	0	0.0%	1	3.1%	0	0.0%	491	100.0%	495	45.8%
19 - 21	30	13.2%	5	2.6%	0	0.0%	3	9.4%	172	100.0%	0	0.0%	207	19.2%
22 - 29	78	34.4%	40	21.1%	4	8.9%	10	31.3%	0	0.0%	0	0.0%	118	10.9%
30 - 44	80	35.2%	75	39.5%	20	44.4%	16	50.0%	0	0.0%	0	0.0%	155	14.4%
45 - 54	27	11.9%	50	26.3%	15	33.3%	2	6.3%	0	0.0%	0	0.0%	77	7.1%
55 - 61	7	3.1%	16	8.4%	4	8.9%	0	0.0%	0	0.0%	0	0.0%	23	2.1%
62 - 64	1	0.4%	2	1.1%	1	2.2%	0	0.0%	0	0.0%	0	0.0%	3	0.3%
65 and Older	0	0.0%	2	1.1%	1	2.2%	0	0.0%	0	0.0%	0	0.0%	2	0.2%
Race/Ethnicity														
America Indian/Alaskan Native	4	1.8%	6	3.2%	2	4.4%	0	0.0%	2	1.2%	8	1.6%	20	1.9%
Asian	25	11.0%	14	7.4%	7	15.6%	2	6.3%	28	16.3%	104	21.2%	171	15.8%
Black/African American	15	6.6%	11	5.8%	2	4.4%	0	0.0%	14	8.1%	42	8.6%	82	7.6%
Hawaiian Native/Other Pacific Islander	2	0.9%	5	2.6%	0	0.0%	0	0.0%	1	0.6%	3	0.6%	11	1.0%
White	86	37.9%	63	33.2%	8	17.8%	19	59.4%	23	13.4%	83	16.9%	255	23.6%
Ethnicity Hispanic or Lation	98	43.2%	101	53.2%	27	60.0%	11	34.4%	106	61.6%	279	56.8%	584	54.1%
Veterans Status														
Total Veterans	9	4.0%	16	8.4%	2	4.4%	4	12.5%	1	0.6%	0	0.0%	26	2.4%
Campaign Veteran	7	3.1%	13	6.8%	2	4.4%	2	6.3%	0	0.0%	0	0.0%	20	1.9%
Disabled Veteran	0	0.0%	2	1.1%	0	0.0%	0	0.0%	0	0.0%	0	0.0%	2	0.2%
Recently Separated Veteran	3	1.3%	3	1.6%	0	0.0%	1	3.1%	1	0.6%	0	0.0%	7	0.6%
Spouse of Veteran	2	0.9%	4	2.1%	1	2.2%	0	0.0%	0	0.0%	0	0.0%	6	0.6%
Labor Force Status								0.0%						
Employed	90	39.6%	13	6.8%	0	0.0%	17	53.1%	26	15.1%	16	3.3%	145	13.4%
Unemployed	137	60.4%	176	92.6%	45	100.0%	15	46.9%	146	84.9%	475	96.7%	934	86.5%
Public Assistance Status														
TANF	12	5.3%	7	3.7%	2	4.4%	3	9.4%	18	10.5%	169	34.4%	206	19.1%
GA, RCA, or SSI	5	2.2%	2	1.1%	0	0.0%	0	0.0%	7	4.1%	41	8.4%	55	5.1%
Pell Grant Recipient	17	7.5%	5	2.6%	0	0.0%	7	21.9%	5	2.9%	3	0.6%	30	2.8%
Food Stamps	50	22.0%	19	10.0%	3	6.7%	7	21.9%	34	19.8%	196	39.9%	299	27.7%
Education Status														
Student, High School or Less	7	3.1%	5	2.6%	1	2.2%	0	0.0%	0	0.0%	382	77.8%	394	36.5%
Student, Attending Post High School	61	26.9%	17	8.9%	4	8.9%	24	75.0%	7	4.1%	5	1.0%	90	8.3%
Out-of-School, High School Dropout	10	4.4%	11	5.8%	0	0.0%	0	0.0%	39	22.7%	18	3.7%	78	7.2%
Out-of-School, High School Grad, with Employ Difficulty	77	33.9%	91	47.9%	39	86.7%	1	3.1%	123	71.5%	85	17.3%	376	34.8%
Out-of-School, HSG, No Employ Diff. (Counted as In-School)	72	31.7%	66	34.7%	1	2.2%	7	21.9%	3	1.7%	1	0.2%	142	13.1%
Unemployment Insurance Status														
UI Claimant	28	12.3%	148	77.9%	40	88.9%	2	6.3%	3	1.7%	1	0.2%	180	16.7%
UI Exhaustee	12	5.3%	22	11.6%	0	0.0%	0	0.0%	1	0.6%	0	0.0%	35	3.2%
Barriers To Employment														
Disabled	3	1.3%	1	0.5%	0	0.0%	1	3.1%	11	6.4%	108	22.0%	123	11.4%
Limited Eng. Proficiency	1	0.4%	6	3.2%	0	0.0%	0	0.0%	11	6.4%	36	7.3%	54	5.0%
Single Parent	65	28.6%	32	16.8%	7	15.6%	16	50.0%	28	16.3%	16	3.3%	141	13.1%
Worker Profiling/Reemployment Services Referral	7	3.1%	12	6.3%	0	0.0%	0	0.0%	0	0.0%	0	0.0%	19	1.8%
Low Income	130	57.3%	61	32.1%	7	15.6%	19	59.4%	170	98.8%	471	95.9%	832	77.0%
Displaced Homemaker	1	0.4%	0	0.0%	0	0.0%	0	0.0%	1	0.6%	0	0.0%	2	0.2%
Offender	14	6.2%	3	1.6%	0	0.0%	1	3.1%	12	7.0%	0	0.0%	29	2.7%
Homeless	3	1.3%	3	1.6%	0	0.0%	0	0.0%	8	4.7%	7	1.4%	21	1.9%
Runaway Youth	0	0.0%	0	0.0%	0	0.0%	0	0.0%	4	2.3%	6	1.2%	10	0.9%
Pregnant/Parenting Youth	0	0.0%	0	0.0%	0	0.0%	0	0.0%	45	26.2%	31	6.3%	76	7.0%
Youth Needing Additional Assistance	0	0.0%	0	0.0%	0	0.0%	0	0.0%	169	98.3%	486	99.0%	655	60.6%
Basic Literacy Skills Deficient	87	38.3%	84	44.2%	1	2.2%	7	21.9%	160	93.0%	457	93.1%	788	73.0%
Substance Abuse	0	0.0%	0	0.0%	0	0.0%	0	0.0%	3	1.7%	17	3.5%	20	1.9%
Foster Youth	0	0.0%	0	0.0%	0	0.0%	0	0.0%	1	0.6%	16	3.3%	17	1.6%