



The Quick Look

A Merced County Labor Market Review - December 2004

Welcome to the Merced County labor market review. The Quick Look has been developed by the Department of Workforce Investment staff for the Merced County Local Workforce Investment Board. The data and information is provided by the California Employment Development Department. Questions can be referred to the Department of Workforce Investment, 1880 West Wardrobe Avenue, Merced, CA 95340. Telephone (209) 724-2042. Email: pitd26@co.merced.ca.us

Labor Force and Industrial Employment						
Merced County	March 2003 Benchmark					
Data not adjusted for Seasonality	Dec 03	Oct 04	Nov 04	Dec 04	Percent	Change
			Revised	Prelim.	Month	Year
Civilian Labor Force (1)	90,000	93,600	93,700	92,800	-1.0%	3.1%
Civilian Employment	76,800	83,100	81,600	80,000	-2.0%	4.2%
Civilian Unemployment	13,200	10,400	12,100	12,800	5.8%	-3.0%
Civilian Unemployment Rate	14.6%	11.2%	12.9%	13.8%		
(CA Unemployment Rate)	6.2%	5.7%	5.7%	5.4%		
(U.S. Unemployment Rate)	5.4%	5.1%	5.2%	5.1%		
Total, All Industries	65,700	71,000	69,200	67,800	-2.0%	3.2%
Total Farm	9,000	12,500	10,500	9,100	-13.3%	1.1%
Total Nonfarm	56,700	58,500	58,700	58,700	0.0%	3.5%
Total Private	43,200	45,400	45,100	45,000	-0.2%	4.2%
Goods Producing	14,300	15,600	15,400	15,400	0.0%	7.7%
Natural Resources, Mining and Construction	3,200	3,600	3,500	3,700	5.7%	15.6%
Manufacturing	11,100	12,000	11,900	11,700	-1.7%	5.4%
Durable Goods	1,600	1,600	1,700	1,800	5.9%	12.5%
Nondurable Goods	9,500	10,400	10,200	9,900	-2.9%	4.2%
Food Man & Beverage & Tobacco	7,600	8,600	8,300	8,000	-3.6%	5.3%
Residual-Textile Mills	1,900	1,800	1,900	1,900	0.0%	0.0%
Service Providing	42,400	42,900	43,300	43,300	0.0%	2.1%
Trade, Transportation and Utilities	11,900	12,300	12,300	12,200	-0.8%	2.5%
Wholesale Trade	1,700	1,900	1,800	1,600	-11.1%	-5.9%
Retail Trade	7,800	7,800	8,000	8,100	1.3%	3.8%
Food and Beverage Stores	1,600	1,600	1,600	1,600	0.0%	0.0%
General Merchandise Stores	1,800	1,900	2,100	2,200	4.8%	22.2%
Residual-Miscellaneous Store Retailers	4,400	4,300	4,300	4,300	0.0%	-2.3%
Transportation, Warehousing and Utilities	2,400	2,600	2,500	2,500	0.0%	4.2%
Information	500	500	500	500	0.0%	0.0%
Financial Activities	1,600	1,600	1,600	1,600	0.0%	0.0%
Finance and Insurance	1,000	1,000	1,000	1,000	0.0%	0.0%
Real Estate and Rental and Leasing	600	600	600	600	0.0%	0.0%
Professional and Business Services	3,100	3,400	3,400	3,400	0.0%	9.7%
Educational and Health Services	5,600	5,500	5,400	5,400	0.0%	-3.6%
Leisure and Hospitality	4,500	4,700	4,700	4,700	0.0%	4.4%
Food Service and Drinking Places	3,700	3,800	3,800	3,800	0.0%	2.7%
Residual-Arts, Entertainment, and Recreation	800	900	900	900	0.0%	12.5%
Other Services	1,700	1,800	1,800	1,800	0.0%	5.9%
Government	13,500	13,100	13,600	13,700	0.7%	1.5%
Federal Government	800	800	800	800	0.0%	0.0%
State and Local Government	12,700	12,300	12,800	12,900	0.8%	1.6%
State Government	600	600	500	500	0.0%	-16.7%
Local Government	12,100	11,700	12,300	12,400	0.8%	2.5%

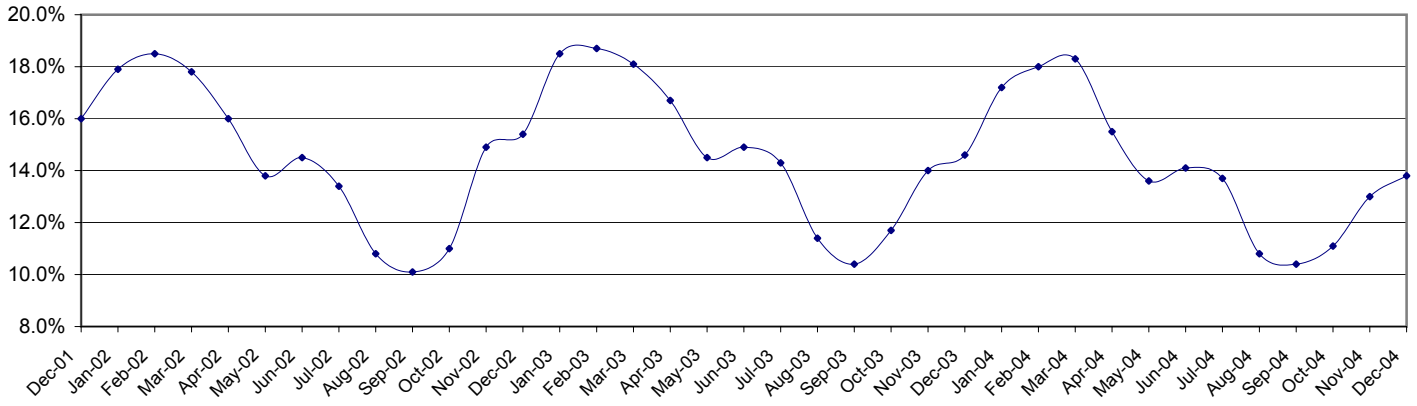
The County continues with one of the highest unemployment rates in the State, ranking 54th out of 58 counties in the Month of November. The preliminary result is an increase of 0.8 percentage point in the unemployment rate from the revised November rate. This preliminary figure is a decrease of 0.8 percentage point from the unemployment rate of one year ago.

Overall, the County's Labor Force decreased by 900 persons over last month's figure. Industrial employment decrease by 1,400 jobs in December over November's figures.

The Quick Look

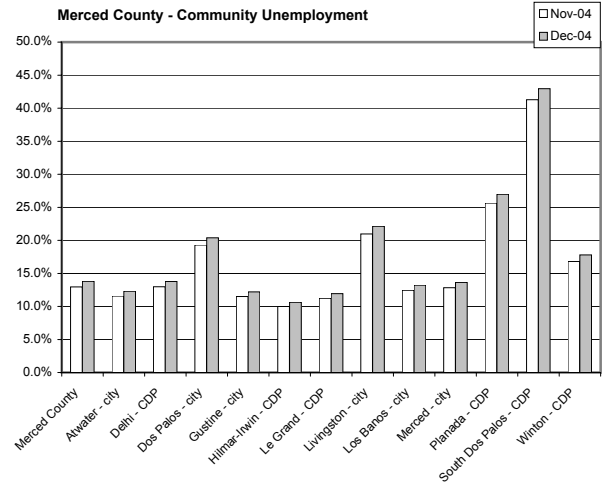
A Merced County Labor Market Review - December 2004

**Merced County Unemployment Rate
Historical Trend**



Sub County average unemployment rates for the county, cities, and municipalities.

Area Name	Labor Force	Employment	Unemployment	
			Number	Rate
Merced County	92,800	80,000	12,800	13.8%
Atwater - city	10,900	9,560	1,340	12.3%
Delhi - CDP	1,690	1,460	230	13.8%
Dos Palos - city	2,110	1,680	430	20.4%
Gustine - city	2,060	1,810	250	12.2%
Hilmar-Irwin - CDP	1,900	1,700	200	10.6%
Le Grand - CDP	560	490	70	11.9%
Livingston - city	4,330	3,370	960	22.1%
Los Banos - city	7,900	6,860	1,040	13.2%
Merced - city	28,180	24,340	3,840	13.6%
Planada - CDP	1,900	1,390	510	27.0%
South Dos Palos - CDP	580	330	250	43.0%
Winton - CDP	3,700	3,040	660	17.8%



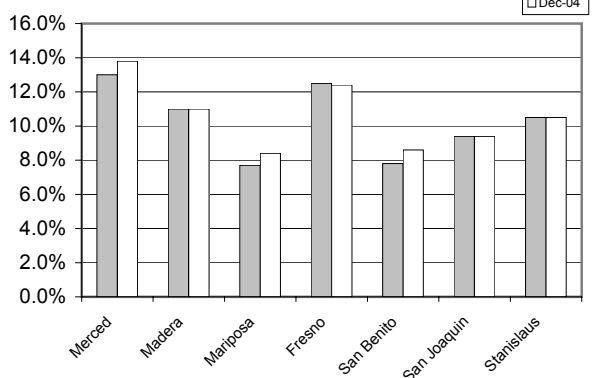
QuickLook at the Seven Counties: Merced County's workforce has grown over the past 20 years reflecting improvement of the County's economic well being; however, unemployment remains a consistent barrier to greater prosperity. Average Unemployment has fluctuated from a yearly low of 12.8 percent to a yearly high of 17.3 percent in 1992. Between the years 1990 to 2003 Merced County's average unemployment was 15.2 percent.

The County's unemployment rate is the fifth highest in the state. Merced County saw an increase in the unemployment rate of 0.8 percentage point above November's revised unemployment rate. Three counties (Merced, Mariposa, and San Benito) saw increases in their unemployment rate. Three counties (Madera, San Joaquin, and Stanislaus) unemployment rate remain stable. Fresno county unemployment rate saw a decrease.

Seven County Quick Look

County	Rank	Labor Force	Employ	Unemploy	Rate
Merced	54	92,800	80,000	12,800	13.8%
Madera	44	56,400	50,200	6,200	11.0%
Mariposa	37	6,970	6,390	590	8.4%
Fresno	49	393,100	344,400	48,700	12.4%
San Benito	39	28,310	25,870	2,440	8.6%
San Joaquin	41	283,600	257,000	26,600	9.4%
Stanislaus	42	215,800	193,100	22,800	10.5%

Seven County Unemployment Rate

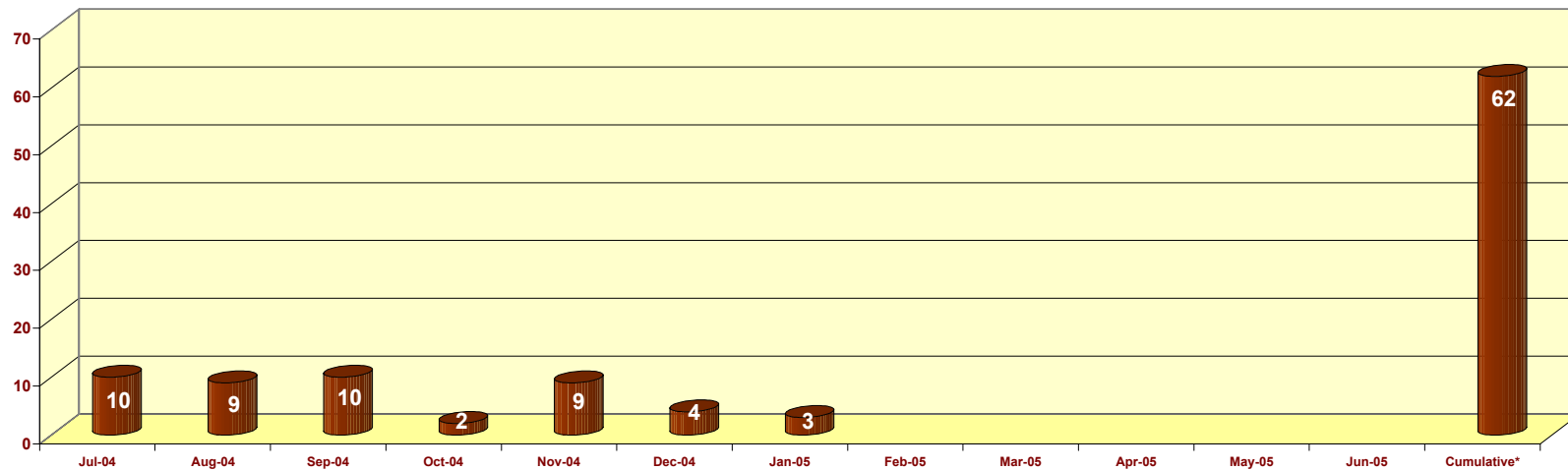


WIA PARTICIPANT SUMMARY REPORT - ADULT
PY 2004/2005
Report Range 07/2004 to 01/2005

	ADULT												Part. Plan	
	Jul-04	Aug-04	Sep-04	Oct-04	Nov-04	Dec-04	Jan-05	Feb-05	Mar-05	Apr-05	May-05	Jun-05		Cumulative*
Total Participants	150	159	173	147	157	166	141						203	783
Participants Carried In	140	150	163	145	148	162	138						141	423
New Participants Entering Grant	10	9	10	2	9	4	3						62	360
Total Participants Exiting WI	0	0	28	0	0	34	2						64	
Entered Unsubsidized Employment	0	0	25	0	0	30	0						55	160
Training Related	0	0	13	0	0	12	0						25	75
Entered Military Service	0	0	0	0	0	0	0						0	
Entered Qualified Apprenticeship Program	0	0	0	0	0	0	0						0	
Entered Post-Secondary Education	0	0	0	0	0	0	0						0	
Entered Advanced Training	0	0	0	0	0	0	0						0	
Attained Recognized Certificate/Diploma/Degree	0	0	16	0	0	13	1						30	
Attained High School Diploma/GED	0	0	0	0	0	0	0						0	
Returned to Secondary School (Youth Only)	0	0	0	0	0	0	0						0	
Exits Excluded from Performance	0	0	0	0	0	2	0						2	
Other Exits	0	0	23	0	0	29	2						54	60

	Enrolled													
	Jul-04	Aug-04	Sep-04	Oct-04	Nov-04	Dec-04	Jan-05	Feb-05	Mar-05	Apr-05	May-05	Jun-05	Cumulative*	
Program Activities/Services Summary														
Core Services (Registered)	149	158	172	147	157	166	141						203	515
Intensive Services	113	120	125	107	115	124	115						152	260
Training Services	68	71	76	64	66	74	63						89	100
Youth Services	0	0	0	0	0	0	0						0	
Concurrent Program Participants	9	9	9	6	6	9	7						12	
Individual Training Accounts	4	4	4	2	2	2	2						4	
Goals Set (Younger Youth Only)	0	0	0	0	0	0	0						0	

WIA Participant Summary
New Participants Entering Grant : Adult
PY 2004/2005

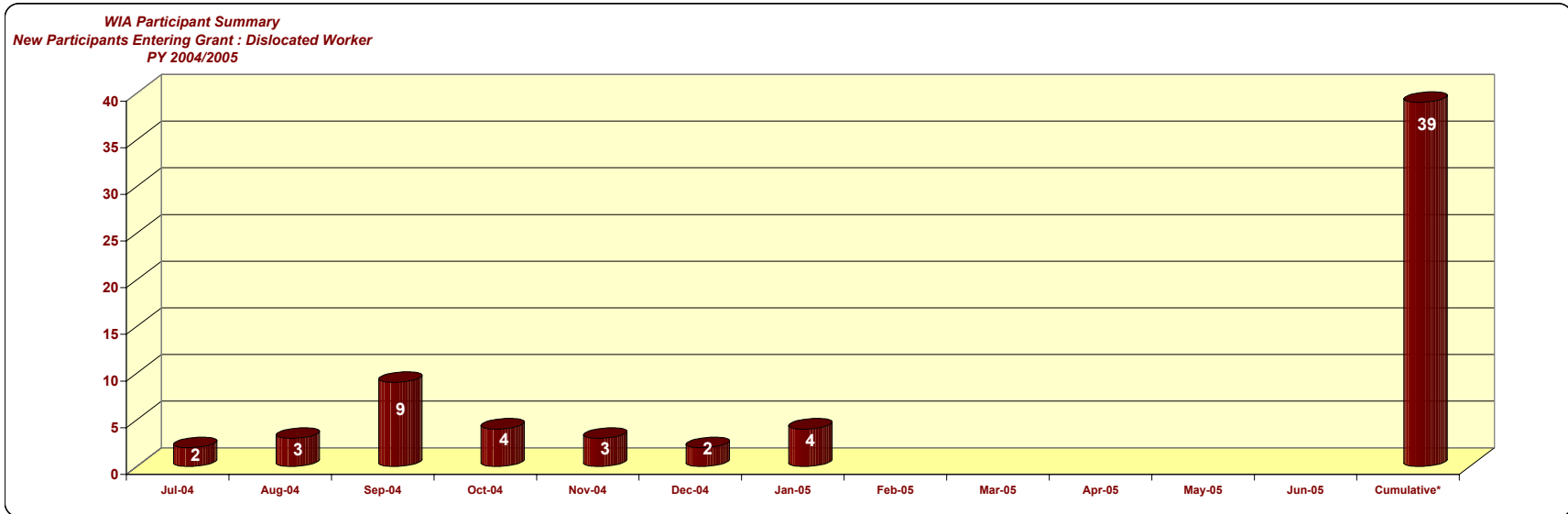


Monthly totals are produced on the 20th of the following month and are not updated on a monthly basis. Late data entry are not updated for previous months, see cumulative totals for current total.

WIA PARTICIPANT SUMMARY REPORT - DISLOCATED WORKER
PY 2004/2005
Report Range 07/2004 to 01/2005

	DISLOCATED WORKER												Cumulative*	Part. Plan PY 04/05	
	Jul-04	Aug-04	Sep-04	Oct-04	Nov-04	Dec-04	Jan-05	Feb-05	Mar-05	Apr-05	May-05	Jun-05			
Total Participants	89	92	104	95	98	102	92							126	671
Participants Carried In	87	89	95	91	95	100	88							87	251
New Participants Entering Grant	2	3	9	4	3	2	4							39	420
Total Participants Exiting WI	0	0	16	0	0	18	0							34	120
Entered Unsubsidized Employment	0	0	12	0	0	14	0							26	65
Training Related	0	0	4	0	0	9	0							13	
Entered Military Service	0	0	0	0	0	0	0							0	
Entered Qualified Apprenticeship Program	0	0	0	0	0	0	0							0	
Entered Post-Secondary Education	0	0	0	0	0	0	0							0	
Entered Advanced Training	0	0	0	0	0	0	0							0	
Attained Recognized Certificate/Diploma/Degree	0	0	7	0	0	13	0							20	
Attained High School Diploma/GED	0	0	0	0	0	0	0							0	
Returned to Secondary School (Youth Only)	0	0	0	0	0	0	0							0	
Exits Excluded from Performance	0	0	0	0	0	1	0							1	
Other Exits	0	0	15	0	0	17	0							32	60

Program Activities/Services Summary	Enrolled												Cumulative*	PY 04/05	
	Jul-04	Aug-04	Sep-04	Oct-04	Nov-04	Dec-04	Jan-05	Feb-05	Mar-05	Apr-05	May-05	Jun-05			
Core Services (Registered)	89	92	104	95	98	102	92							126	500
Intensive Services	62	66	69	64	67	71	66							90	150
Training Services	30	31	33	30	31	31	27							39	80
Youth Services	0	0	0	0	0	0	0							0	
Concurrent Program Participants	13	13	13	12	12	12	8							13	
Individual Training Accounts	5	5	5	4	4	4	3							6	
Goals Set (Younger Youth Only)	0	0	0	0	0	0	0							0	

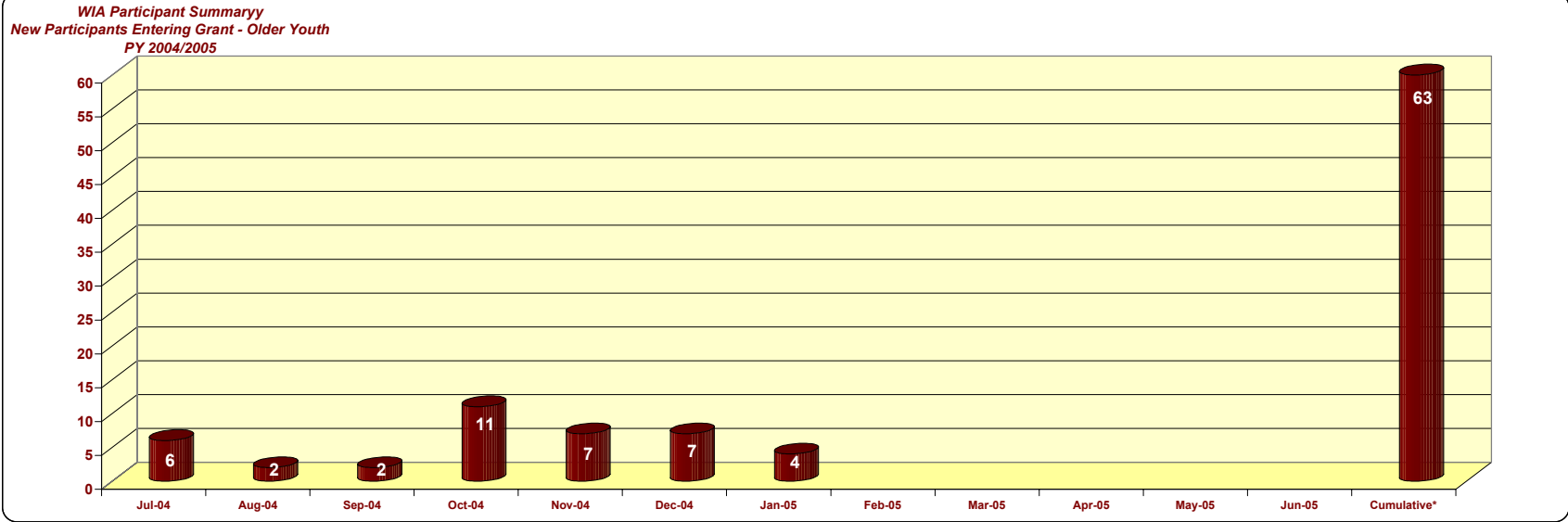


Monthly totals are produced on the 20th of the following month and are not updated on a monthly basis. Late data entry are not updated for previous months, see cumulative totals for current total.

WIA PARTICIPANT SUMMARY REPORT - OLDER YOUTH
PY 2004/2005
Report Range 07/2004 to 01/2005

	OLDER YOUTH												Part. Plan PY 04/05	
	Jul-04	Aug-04	Sep-04	Oct-04	Nov-04	Dec-04	Jan-05	Feb-05	Mar-05	Apr-05	May-05	Jun-05		Cumulative*
Total Participants	130	113	117	122	132	143	150						180	310
Participants Carried In	124	111	115	111	125	136	146						117	234
New Participants Entering Grant	6	2	2	11	7	7	4						63	76
Total Participants Exiting WI	15	0	2	0	0	0	0						30	
Entered Unsubsidized Employment	5	0	1	0	0	0	0						14	10
Training Related	4	0	1	0	0	0	0						7	5
Entered Military Service	0	0	0	0	0	0	0						0	
Entered Qualified Apprenticeship Program	0	0	0	0	0	0	0						0	
Entered Post-Secondary Education	1	0	0	0	0	0	0						2	5
Entered Advanced Training	0	0	0	0	0	0	0						0	
Attained Recognized Certificate/Diploma/Degree	4	0	1	0	0	0	0						8	
Attained High School Diploma/GED	0	0	0	0	0	0	0						0	
Returned to Secondary School (Youth Only)	0	0	0	0	0	0	0						0	
Exits Excluded from Performance	0	0	0	0	0	0	0						0	
Other Exits	9	0	2	0	0	0	0						24	60

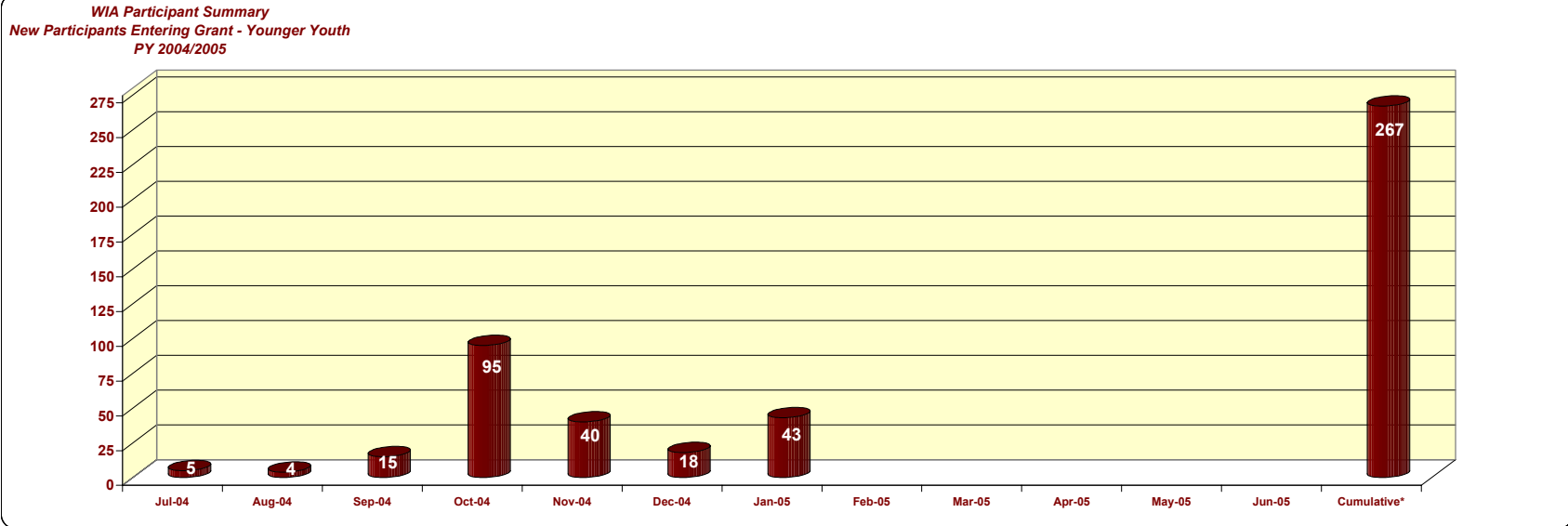
Program Activities/Services Summary	Enrolled												
	Jul-04	Aug-04	Sep-04	Oct-04	Nov-04	Dec-04	Jan-05	Feb-05	Mar-05	Apr-05	May-05	Jun-05	Cumulative*
Core Services (Registered)	0	0	0	0	0	0	0						0
Intensive Services	115	98	100	107	114	119	125						150
Training Services	86	79	83	85	90	97	103						120
Youth Services	118	104	108	117	130	141	148						175
Concurrent Program Participants	94	76	72	65	67	70	72						99
Individual Training Accounts	0	0	0	0	0	0	0						0
Goals Set (Younger Youth Only)	0	0	0	0	0	0	0						0



Monthly totals are produced on the 20th of the following month and are not updated on a monthly basis. Late data entry are not updated for previous months, see cumulative totals for current total.

WIA PARTICIPANT SUMMARY REPORT - YOUNGER YOUTH
PY 2004/2005
Report Range 07/2004 to 01/2005

	Jul-04	Aug-04	Sep-04	Oct-04	Nov-04	Dec-04	Jan-05	Feb-05	Mar-05	Apr-05	May-05	Jun-05	Cumulative*	Participant Plan PY 04/05
Total Participants	455	366	341	436	471	496	549						710	900
Participants Carried In	450	362	326	341	431	478	506						443	618
New Participants Entering Grant	5	4	15	95	40	18	43						267	282
Total Participants Exiting WI	83	42	12	5	2	3	7						168	
Entered Unsubsidized Employment	6	6	3	1	0	0	2						22	80
Training Related	11	4	4	0	0	0	0						24	20
Entered Military Service	0	0	0	0	0	0	0						0	8
Entered Qualified Apprenticeship Program	0	0	0	0	0	0	0						0	0
Entered Post-Secondary Education	30	10	6	0	0	0	0						49	130
Entered Advanced Training	1	1	0	0	0	0	0						2	5
Attained Recognized Certificate/Diploma/Degree	78	40	10	1	2	0	2						142	
Attained High School Diploma/GED	77	40	9	0	2	0	2						136	450
Returned to Secondary School (Youth Only)	1	0	0	1	0	0	0						2	15
Exits Excluded from Performance	0	1	1	0	0	0	0						2	
Other Exits	82	40	12	4	2	3	7						163	40
Program Activities/Services Summary	Enrolled													
Core Services (Registered)	0	0	0	0	0	0	0						0	
Intensive Services	82	74	73	83	84	87	90						105	
Training Services	71	67	65	69	71	73	78						92	
Youth Services	449	362	338	436	470	495	548						707	
Concurrent Program Participants	334	261	250	323	339	355	381						505	
Individual Training Accounts	0	0	0	0	0	0	0						0	
Goals Set (Younger Youth Only)	12	10	31	112	47	41	85						420	



Monthly totals are produced on the 20th of the following month and are not updated on a monthly basis. Late data entry are not updated for previous months, see cumulative totals for current total.

Code	Description	Adult		Youth		Dislocated Worker		Totals		Grand Total
		New	Carry Over	New	Carry Over	New	Carry Over	New	Carry Over	
CORE B	10 FOLLOW UP SRVCS CNSLNG	9	14			2	21	11	35	46
	11 STAFF ASSIST JOB DEVELOP	3	3			2		5	3	8
	12 STAFF ASSIST JOB REFER	7	6			1	7	8	13	21
	13 STAFF ASSIST JOB SRCH	10	24			4	19	14	43	57
	14 STAFF ASSIST WRKSHP	4						4		4
	15 OTHER CORE SERVICES	10	2			7		17	2	19
	16 NON WIA FUNDED SERVICES									
17 CO-ENROLLED CORE SERVICES		3			10	3	10	6	16	
INTENSIVE	30 CASE MGMT FOR PARTIC	11	23	72	127	9	10	92	160	252
	31 COMPREHENSIVE ASSESSMNTS	8	1			5	1	13	2	15
	32 DEVELOP INDIV EMPL PLAN	11	1	1	1	11	2	23	4	27
	33 GROUP COUNSELING									
	34 EMPL EXPERIENCE			12	23			12	23	35
	35 INDIV CNSLNG CAREER PLAN			2				2		2
	36 OUT OF AREA JOB SEARCH									
	37 RELOCATION EXPENSES									
	38 SHORT TERM PREVOC SRVCS									
	39 INTERNSHIPS									
	40 OTHER INTENSIVE SRVCS	5	1			5	2	10	3	13
	41 NONWIA FUND INTENS SRVCS									
42 CO-ENROLLED INTENSIVE SRVCS										
TRAINING	50 ADULT EDUCATION			21	12			21	12	33
	51 CUSTOMIZED TRAINING									
	52 ENTREPRENEURIAL TRAINING				1				1	1
	53 JOB READINESS TRAINING			16	9			16	9	25
	54 OCCUP SKILLS TRAINING	13	27	30	38	6	5	49	70	119
	55 ON THE JOB TRAINING	4				1		5		5
	56 PRIVATE SECTOR TRAINING									
	57 SKILL UPGRADNG RETRNG									
	58 WRKPLCE TRNG AND COOP ED									
	59 OTHER TRAINING SRVCS									
60 NON-WIA FUNDED TRNG SRVCS	13	12			11	9	24	21	45	
61 CO-ENROLLED TRAINING SRVCS										
YOUTH	70 SUMMER RELATED									
	71 EDUCATNL ACHVMNT SRVCS			348	299			348	299	647
	72 EMPLOYMENT SERVICES			129	185			129	185	314
	73 CITIZEN LEADERSHIP SRVCS									
	74 OTHER YOUTH SERVICES									
	75 NONWIA FUNDED YOUTH SRVCS									
76 CO-ENROLLED YOUTH SRVCS										
MISC.	80 OTHER JTPA									
	81 SUPPORTIVE SERVICES	34	48	5	25	27	17	66	90	156
	82 NEEDS RELATED PAYMENT									
	83 BREAK IN SERVICE						1		1	1
	84 NON-WIA FUNDED MISC									
	85 CO-ENROLLED MISCELLANEOUS									
	86 BRK IN SERV - HEALTH/MED									
	TOTAL	142	165	636	720	101	97	879	982	1,861

WIA Participant Characteristics Summary
Report Period: 7/2004 to 01/2005
Data as of: 02/22/2005

	Adult		Dislocated Workers		Older Youth		Younger Youth		All Programs	
	Enrolled	% of Tot.	Enrolled	% of Tot.	Enrolled	% of Tot.	Enrolled	% of Tot.	Enrolled	% of Total
Total Participants	203	100.0%	126	100.0%	180	100.0%	710	100.0%	1,219	100.0%
Gender										
Female	148	72.9%	68	54.0%	120	66.7%	388	54.6%	724	59.4%
Male	55	27.1%	58	46.0%	60	33.3%	322	45.4%	495	40.6%
Age										
14 - 18	3	1.5%	0	0.0%	0	0.0%	710	100.0%	713	58.5%
19 - 21	31	15.3%	2	1.6%	180	100.0%	0	0.0%	213	17.5%
22 - 29	61	30.0%	37	29.4%	0	0.0%	0	0.0%	98	8.0%
30 - 44	85	41.9%	46	36.5%	0	0.0%	0	0.0%	131	10.7%
45 - 54	16	7.9%	30	23.8%	0	0.0%	0	0.0%	46	3.8%
55 - 61	6	3.0%	9	7.1%	0	0.0%	0	0.0%	15	1.2%
62 - 64	1	0.5%	1	0.8%	0	0.0%	0	0.0%	2	0.2%
65 and Older	0	0.0%	1	0.8%	0	0.0%	0	0.0%	1	0.1%
Race/Ethnicity										
America Indian/Alaskan Native	5	2.5%	4	3.2%	1	0.6%	6	0.8%	16	1.3%
Asian	18	8.9%	8	6.3%	32	17.8%	136	19.2%	194	15.9%
Black/African American	15	7.4%	12	9.5%	14	7.8%	43	6.1%	84	6.9%
Hawaiian Native/Other Pacific Islander	3	1.5%	3	2.4%	1	0.6%	9	1.3%	16	1.3%
White	83	40.9%	48	38.1%	19	10.6%	104	14.6%	254	20.8%
Ethnicity Hispanic or Latino	85	41.9%	55	43.7%	115	63.9%	438	61.7%	693	56.8%
Veterans Status										
Total Veterans	11	5.4%	14	11.1%	1	0.6%	0	0.0%	26	2.1%
Campaign Veteran	9	4.4%	10	7.9%	0	0.0%	0	0.0%	19	1.6%
Disabled Veteran	3	1.5%	1	0.8%	0	0.0%	0	0.0%	4	0.3%
Recently Separated Veteran	4	2.0%	3	2.4%	1	0.6%	0	0.0%	8	0.7%
Spouse of Veteran	2	1.0%	2	1.6%	0	0.0%	0	0.0%	4	0.3%
Labor Force Status										
Employed	84	41.4%	6	4.8%	23	12.8%	26	3.7%	139	11.4%
Unemployed	119	58.6%	118	93.7%	157	87.2%	682	96.1%	1,076	88.3%
Public Assistance Status										
TANF	12	5.9%	2	1.6%	15	8.3%	214	30.1%	243	19.9%
GA, RCA, or SSI	3	1.5%	4	3.2%	7	3.9%	54	7.6%	68	5.6%
Pell Grant Recipient	19	9.4%	5	4.0%	7	3.9%	3	0.4%	34	2.8%
Food Stamps	40	19.7%	13	10.3%	26	14.4%	260	36.6%	339	27.8%
Education Status										
Student, High School or Less	2	1.0%	3	2.4%	1	0.6%	592	83.4%	598	49.1%
Student, Attending Post High School	57	28.1%	11	8.7%	10	5.6%	5	0.7%	83	6.8%
Out-of-School, High School Dropout	7	3.4%	6	4.8%	35	19.4%	22	3.1%	70	5.7%
Out-of-School, High School Grad, with Employ Difficulty	43	21.2%	38	30.2%	131	72.8%	90	12.7%	302	24.8%
Out-of-School, HSG, No Employ Diff. (Counted as In-School)	94	46.3%	68	54.0%	3	1.7%	1	0.1%	166	13.6%
Unemployment Insurance Status										
UI Claimant	19	9.4%	89	70.6%	6	3.3%	2	0.3%	116	9.5%
UI Exhaustee	9	4.4%	18	14.3%	2	1.1%	0	0.0%	29	2.4%
Barriers To Employment										
Disabled	5	2.5%	3	2.4%	7	3.9%	135	19.0%	150	12.3%
Limited Eng. Proficiency	3	1.5%	3	2.4%	14	7.8%	81	11.4%	101	8.3%
Single Parent	49	24.1%	19	15.1%	25	13.9%	20	2.8%	113	9.3%
Worker Profiling/Reemployment Services Referral	2	1.0%	4	3.2%	0	0.0%	6	0.8%	12	1.0%
Low Income	104	51.2%	56	44.4%	177	98.3%	665	93.7%	1,002	82.2%
Displaced Homemaker	1	0.5%	0	0.0%	1	0.6%	0	0.0%	2	0.2%
Offender	9	4.4%	7	5.6%	15	8.3%	49	6.9%	80	6.6%
Homeless	1	0.5%	1	0.8%	11	6.1%	9	1.3%	22	1.8%
Runaway Youth	0	0.0%	0	0.0%	4	2.2%	7	1.0%	11	0.9%
Pregnant/Parenting Youth	0	0.0%	0	0.0%	36	20.0%	40	5.6%	76	6.2%
Youth Needing Additional Assistance	0	0.0%	0	0.0%	175	97.2%	700	98.6%	875	71.8%
Basic Literacy Skills Deficient	55	27.1%	58	46.0%	172	95.6%	674	94.9%	959	78.7%
Substance Abuse	1	0.5%	0	0.0%	4	2.2%	22	3.1%	27	2.2%
Foster Youth	0	0.0%	0	0.0%	1	0.6%	22	3.1%	23	1.9%