



The Quick Look

A Merced County Labor Market Review - January 2008

Welcome to the Merced County labor market review. The Quick Look has been developed by the Department of Workforce Investment staff for the Merced County Local Workforce Investment Board. The data and information is provided by the California Employment Development Department. Questions can be referred to the Department of Workforce Investment, 1880 West Wardrobe Avenue, Merced, CA 95340. Telephone (209) 724-2042. Email: pitd26@co.merced.ca.us or to EDD's Labor Market Information Division at (916) 262-2162.

Merced County Data not adjusted for Seasonality	Labor Force and Industrial Employment						
	March 2006 Benchmark					Percent Change	
	Jan 07	Nov 07	Dec 07	Jan 08	Month	Year	
Civilian Labor Force	100,600	103,800	104,900	104,700	-0.2%	4.1%	
Civilian Employment	88,800	93,300	92,400	90,800	-1.7%	2.3%	
Civilian Unemployment	11,800	10,500	12,500	13,900	11.2%	17.8%	
Civilian Unemployment Rate	11.7%	10.1%	11.9%	13.3%			
(CA Unemployment Rate)	5.5%	5.6%	5.9%	6.3%			
(U.S. Unemployment Rate)	5.0%	4.5%	4.8%	5.4%			
Total, All Industries	66,200	72,000	70,800	68,400	-3.4%	3.3%	
Total Farm	8,600	12,400	11,000	10,100	-8.2%	17.4%	
Total Nonfarm	57,600	59,600	59,800	58,300	-2.5%	1.2%	
Total Private	42,500	43,800	43,800	42,600	-2.7%	0.2%	
Goods Producing	12,200	12,400	12,300	11,900	-3.3%	-2.5%	
Natural Resources and Mining and Constuction	3,400	3,000	3,000	2,900	-3.3%	-14.7%	
Construction	3,400	3,000	3,000	2,900	-3.3%	-14.7%	
Manufacturing	8,800	9,400	9,300	9,000	-3.2%	2.3%	
Durable Goods	1,800	1,800	1,800	1,800	0.0%	0.0%	
Nondurable Goods	7,000	7,600	7,500	7,200	-4.0%	2.9%	
Service Providing	45,400	47,200	47,500	46,400	-2.3%	2.2%	
Private Service Producing	30,300	31,400	31,500	30,700	-2.5%	1.3%	
Trade, Transportation and Utilities	11,800	12,200	12,200	11,600	-4.9%	-1.7%	
Wholesale Trade	2,000	1,900	1,900	1,800	-5.3%	-10.0%	
Retail Trade	7,700	8,000	8,100	7,700	-4.9%	0.0%	
Food and Beverage Stores	1,500	1,700	1,700	1,700	0.0%	13.3%	
General Merchandise Stores	1,800	1,900	2,000	1,800	-10.0%	0.0%	
Residual - Miscellaneous Store Retailers	4,400	4,400	4,400	4,200	-4.5%	-4.5%	
Transportation, Warehousing and Utilities	2,100	2,300	2,200	2,100	-4.5%	0.0%	
Information	1,400	1,300	1,300	1,300	0.0%	-7.1%	
Financial Activities	1,900	1,900	1,900	1,900	0.0%	0.0%	
Finance and Insurance	1,200	1,200	1,200	1,200	0.0%	0.0%	
Real Estate and Rental and Leasing	700	700	700	700	0.0%	0.0%	
Professional and Business Services	3,700	4,200	4,200	4,200	0.0%	13.5%	
Educational and Health Services	5,400	5,600	5,600	5,500	-1.8%	1.9%	
Leisure and Hospitality	4,600	4,800	4,900	4,800	-2.0%	4.3%	
Food Services and Drinking Places	3,900	4,100	4,200	4,100	-2.4%	5.1%	
Residual - Arts, Entertainment, and Recreation	700	700	700	700	0.0%	0.0%	
Other Services	1,500	1,400	1,400	1,400	0.0%	-6.7%	
Government	15,100	15,800	16,000	15,700	-1.9%	4.0%	
Federal Government	700	800	800	800	0.0%	14.3%	
State Government	1,400	1,800	1,800	1,800	0.0%	28.6%	
Local Government	13,000	13,200	13,400	13,100	-2.2%	0.8%	

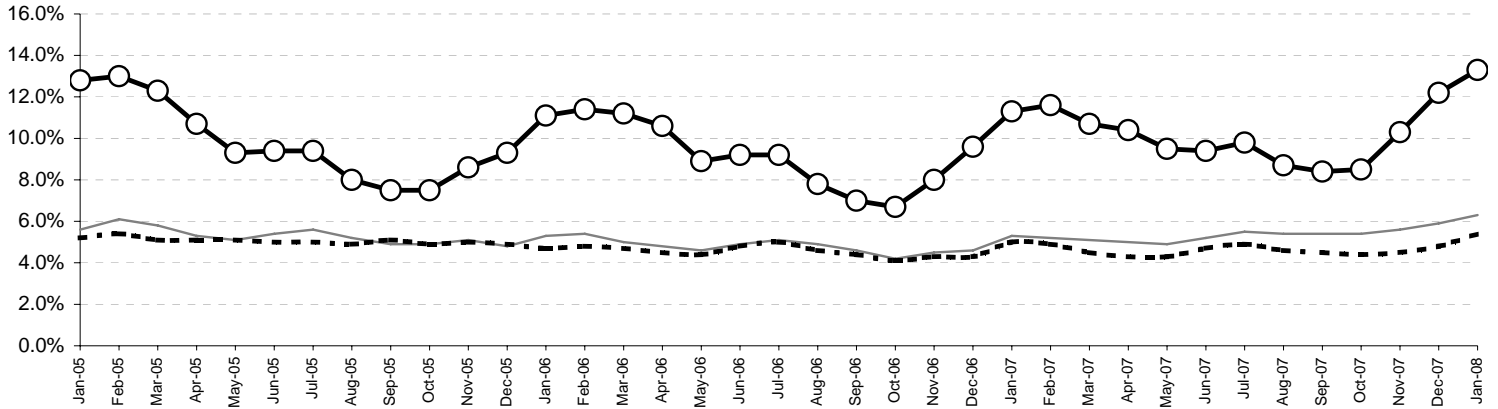
The County continues with one of the highest unemployment rates in the State, ranking 55th out of 58 counties in the month of January. The preliminary result is a increase of 1.4 percentage point in the unemployment rate from the December rate. For year ago data, this preliminary figure is an increase of 1.6 percentage point in the unemployment rate.

Overall, the County's Civilian Labor Force decreased by 200 persons over last month's figure and an increase of 4,100 persons over year ago figure. Industrial employment decreased by 2,400 jobs in January over December's figure and an increase of 2,200 jobs over year ago's figures.

The Quick Look

Nov 2007

Merced County, California, and the United States
Unemployment Rate
Jan 2005 to Jan 2008

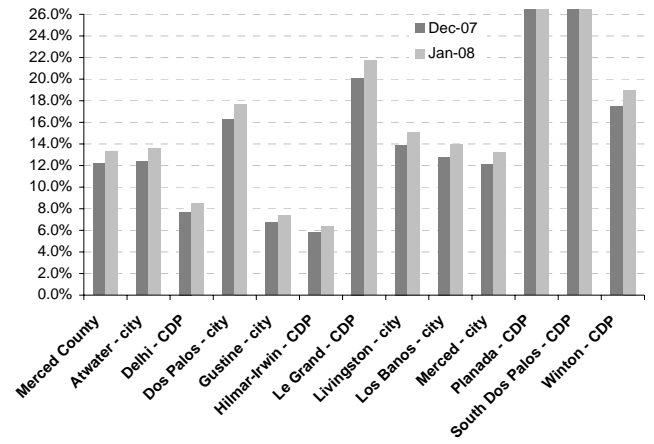


Sub County average unemployment rates for the county, cities, and municipalities.

Area Name	Labor Force	Employment	Unemployment	
			Number	Rate
Merced County	104,700	90,800	13,900	13.3%
Atwater city	12,300	10,600	1,700	13.6%
Delhi CDP	4,000	3,700	300	8.5%
Dos Palos city	2,100	1,700	400	17.7%
Gustine city	2,500	2,300	200	7.4%
Hilmar Irwin CDP	2,800	2,600	200	6.4%
Le Grand CDP	800	600	200	21.7%
Livingston city	5,200	4,400	800	15.1%
Los Banos city	13,000	11,200	1,800	14.0%
Merced city	31,000	26,900	4,100	13.2%
Planada CDP	1,700	1,200	500	30.2%
South Dos Palos CDP	500	300	200	32.5%
Winton CDP	4,000	3,200	800	19.0%

CDP - Census Designated Place

Merced County - Community Unemployment



Merced County's workforce has grown over the past 16 years reflecting improvement of the County's economic well being; however, unemployment remains a consistent barrier to greater prosperity. Average unemployment has fluctuated from an annual low of 9.3 percent to an annual high of 17.5 percent.

Counties in the San Joaquin Valley Quick Look

County	Rank	Labor Force	Employ	Unemployed	Rate
Merced	55	104,700	90,800	13,900	13.3%
Fresno	41	433,800	388,200	45,600	10.5%
Kern	37	354,400	319,500	34,900	9.9%
Kings	45	58,900	52,300	6,600	11.2%
Madera	36	64,800	58,700	6,100	9.4%
San Joaquin	38	300,700	270,600	30,100	10.0%
Stanislaus	44	232,200	207,100	25,100	10.8%
Tulare	47	195,800	173,500	22,300	11.4%
San Joaquin Valley		1,745,300	1,560,700	184,600	10.6%

Counties in the San Joaquin Valley
Unemployment Rates

