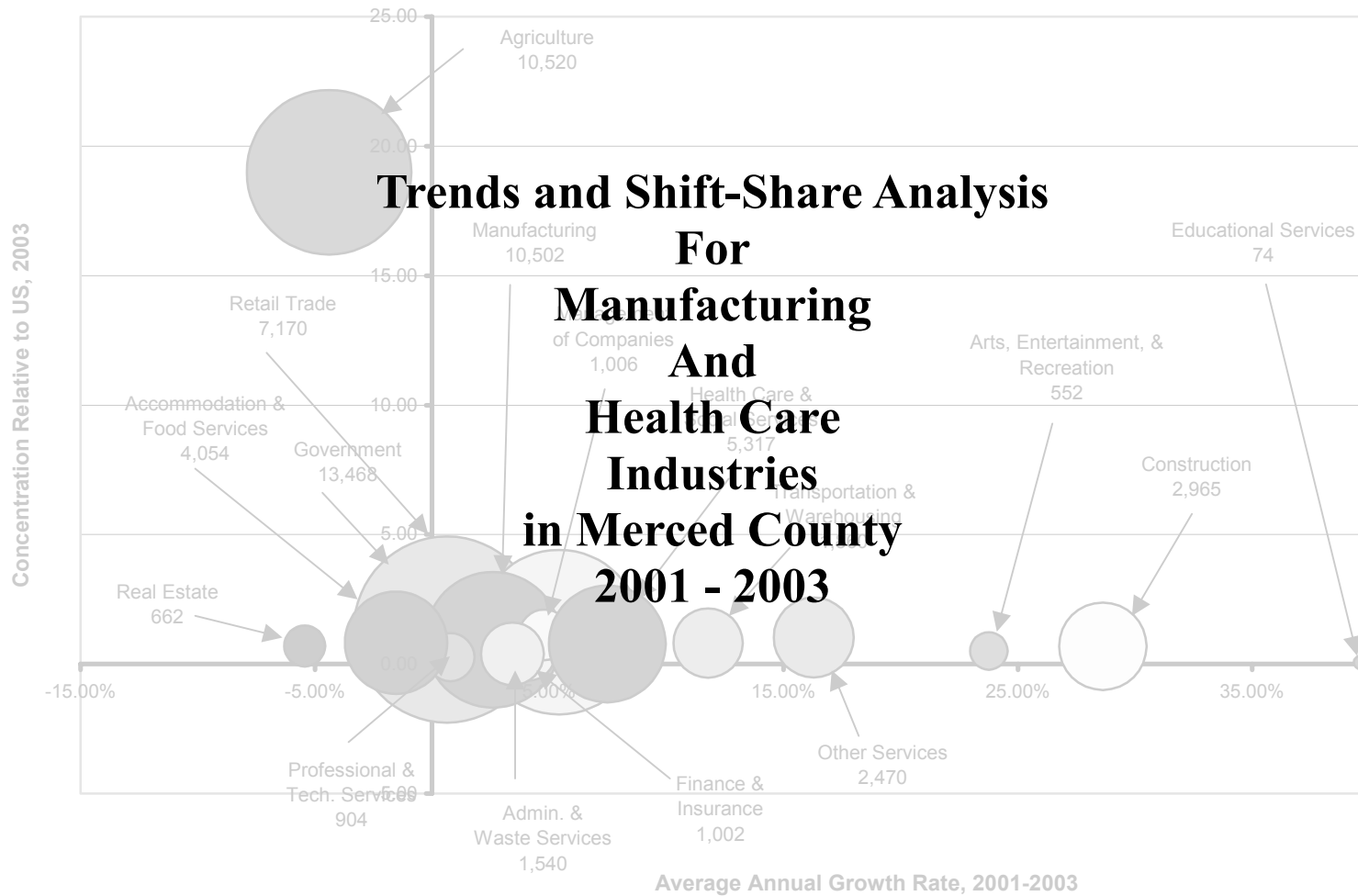


Growth, Employment Size, and Concentration to U.S. (Location Quotient)
for All Sectors, Merced County 2001-2003



Trends and Shift-Share Analysis for Manufacturing and the Health Care and Social Services in Merced County 2001-2003

Manufacturing

Manufacturing employment grew an average 1.3 percent per year and over the 2001-2003 period expanded by 5.4 percent in Merced County. Total employment in this sector was 10,502 in 2003.

This sector is divided into Nondurable Goods and Durable Goods. For Merced County, Nondurable Goods includes the sub-sector Food Manufacturing with industrial groups Fruit and Vegetable Product Manufacturing and Dairy Product Manufacturing with reportable data. An obvious exclusion from this sub-sector is the suppression of data in Animal Slaughtering and Processing due to confidentiality. The sub-sectors within Durable Goods, are Wood Product Manufacturing, Fabricated Metal Product Manufacturing, Machinery Manufacturing, Transportation Equipment Manufacturing, Furniture and Related Product Manufacturing and Miscellaneous Manufacturing.

Employment in Nondurable Goods increased an average 7.5 percent per year and grew by 19 percent, or 1,096 jobs, over the 2001-2003 period. Fruit and Vegetable Product Manufacturing and Dairy Product Manufacturing both showed respectable gains over this time period, with 14.5 and 26.3 percent, respectively.

Durable Goods didn't fair as well as Nondurable goods over the 2001-2003 time period, with employment decreasing an average of -8.5 percent per year or shrinking -11.2 percent over three years. The largest contribution to this decline came from the sub-sectors Fabricated

Metal Product Manufacturing and Machinery Manufacturing with employment dropping 48.8 and 33.5 percent, respectively. The sub-sector, Transportation Equipment showed a gain in employment of 8.3 percent or 33 jobs.

Location quotients (LQ) allow us to categorize our local industries based on their degree of concentration in our county, and whether or not that concentration is growing. It also identifies the industries that are self-sufficient (LQ > 1.00), or exporting industries, (LQ > 1.25), or an importing industry (LQ < 0.75).

LQ low and declining: Relative to the national average, these sub-sectors have a low share of manufacturing employment in Merced County and that share appears to be declining. These are probably the weakest sectors in Manufacturing:

| | LQ | Chg. in LQ 01/03 |
|---------------------------|-----------|---------------------------------|
| Wood Product Manuf | 0.94 | -0.10 |
| Fabricated Metal Products | 0.39 | -0.28 |
| Machinery Manuf. | 0.22 | -0.42 |
| Furniture/Related Manuf. | 0.25 | -0.09 |

LQ low and increasing: These industrial groups have low concentrations of employment, relative to the national share of employment, however their concentration is increasing. Keep an eye on these industries, as they may be important sources of growth and tomorrow's leading sectors.

| | LQ | Chg. in LQ 01/03 |
|------------------------------|-----------|---------------------------------|
| Transportation Equip. Manuf. | .44 | 0.13 |

LQ high and declining: These industries have high employment concentrations relative to the U.S. economy, however their concentrations are declining. While these may have been the former leading sectors of our economy, their decline suggests that they should either be subsidized and strengthened or replaced with new leading industries.

No industries to list.

LQ high and increasing: These are the high flyers of our local manufacturing sector, with high and growing concentrations of employment relative to the national economy. Economic strategy should focus on maintaining a policy environment conducive to continued high performance by these industries

| | LQ | Chg. in LQ 01/03 |
|------------------------------|-----------|---------------------------------|
| Fruit and Vegetable Products | 25.5 | 0.18 |
| Dairy Product Manuf. | 14.6 | 0.21 |

Shift-Share Analysis of employment gives us the ability to separate local employment growth factors from national employment growth factors and gain a better understanding of our local economy. The analysis is primarily used to decompose employment changes within a region over a specific period of time into growth that is attributed to growth of the national economy; growth that is attributed to the mix of faster or

Trends and Shift-Share Analysis for Manufacturing and the Health Care in Merced County 2001-2003

slower than average growing industries; and growth that is attributed to the competitive nature of the local industry. National Growth Share measures the number of jobs created locally due to national economic trends. Industrial Mix Share measures whether the local industry is weighted toward industries that are growing faster or slower than the national average. Local share or Regional shift helps to measure whether local industries are growing faster or slower than similar industries at the national level, or it may answer whether local businesses are more or less competitive than the national average. We will separate the industries in Manufacturing, into two categories, Advantage Industries (competitive) and Disadvantage Industries (uncompetitive) using the Local share.

Advantage Industries in Manufacturing

Food Manufacturing

Fruit and Vegetables Products Manufacturing

Dairy Product Manufacturing

Transportation Equipment Manufacturing

Disadvantage Industries in Manufacturing

Wood Product Manufacturing

Fabricated Metal Product Manufacturing

Machinery Manufacturing

Furniture and Related Product Manufacturing

Over all, as we combine the LQ with the shift-share, we can see that the Food Manufacturing sector, with its industrial groups, and Transportation Equipment Manufacturing have the greatest opportunity of increasing our local employment. Keep in mind, however, that this is a descriptive tool rather than a diagnostic tool. The shift-share analysis does not tell us why

some local industries are more competitive or not. Potential factors could include access to natural resources, local wage rates, workforce productivity or regional transportation networks. Also, adding your own qualitative information to the quantitative data will add to this analysis.

Health Care and Social Services

Health Care employment grew an average 3.8 percent per year and over the 2001-2003 period expanded by 7.48 percent in Merced County. Total employment in this sector was 5,317 in 2003.

For Merced County, Health Care includes the sub-sector Ambulatory Health Care Services with industrial groups Offices of Physicians, Offices of Dentists, Offices of Other Health Practitioners, and Outpatient Care Centers with reportable data. Nursing and Residential Care Facilities is another sub-sector within this sector and includes the industrial groups Nursing Care Facilities, Residential Mental Health Facilities, Community Care Facilities for the Elderly.

Employment in the sub-sector Ambulatory Health Care Services increased an average 4.3 percent per year and grew by 11.6 percent, or 202 jobs, over the 2001-2003 period. This sub-sector has the bulk of sector share with 36.5 percent of employment in 2003. The largest industrial group within this sub-sector is Offices

of Doctors with 907 jobs and an 13.8 percent growth rate over the 2001 - 2003 period. Offices of Dentists holds 7.4 percent sector share and grew 5.3 percent from 2001 to 2003. Offices of Other Health Practitioners out grew all other industrial groups in this sector with an increase of 14.7 percent, although it holds 4.8 percent of sector share. Outpatient Care Centers has a sector share of 2.4 percent and employment grew 5.0 percent during this period.

Nursing and Residential Care Facility's sector share of employment, in this sub-sector, was 23.4 percent in 2003. Growth over the 2001 - 2003 period was 9.6 percent. Nursing Care Facilities holds the largest sector share of employment with 10.8 percent. Data for 2001 was suppressed for this industrial group and growth for this period was not computed. Data was also suppressed for the industrial group Other Residential Care Facilities. Community Care Facilities for the Elderly, with a 5.7 percent sector share, grew 6.4 percent. Residential Mental Health Facilities posted a decline of 48.8 percent over the 2001 - 2003 period, losing 197 jobs.

Location quotients (LQ) definitions of the locations quotient can be found in the Manufacturing section of this report.

LQ low and declining: Relative to the national average, these industrial groups have a low share of Health Care employment in Merced County and that share appears to be declining. These are probably the weakest sectors in Manufacturing:

Trends and Shift-Share Analysis for Manufacturing and the Health Care and Social Services in Merced County 2001-2003

| | LQ | Chg. in LQ 01/03 |
|--------------------------------|------|------------------|
| Outpatient Care Centers | 0.57 | -0.07 |
| Ambulatory Health Care Serv. | 0.78 | -0.01 |
| Residential Mental Health Fac. | 0.83 | -0.54 |

LQ low and increasing: These industrial groups have low concentrations of employment, relative to the national share of employment, however their concentration is increasing. Keep an eye on these industries, as they may be important sources of growth and tomorrow’s leading sectors.

| | LQ | Chg. in LQ 01/03 |
|--------------|----|------------------|
| None to list | | |

LQ high and declining: These industries have high employment concentrations relative to the U.S. economy, however their concentrations are declining. While these may have been the former leading sectors of our economy, their decline suggests that they should either be subsidized and strengthened or replaced with new leading industries.

| | LQ | Chg. in LQ 01/03 |
|---|------|------------------|
| Offices of Dentists | 1.02 | -0.05 |
| Offices of Other Health Pract. | .98 | -0.01 |
| Community Care Facilities for the Elderly | 1.03 | -0.10 |

LQ high and increasing: These are the high

flyers of our local manufacturing sector, with high and growing concentrations of employment relative to the national economy. Economic strategy should focus on maintaining a policy environment conducive to continued high performance by these industries

| | LQ | Chg. in LQ 01/03 |
|-----------------------|------|------------------|
| Offices of Physicians | 0.87 | 0.03 |

Nursing Care Facilities and Other Residential Care Facilities are not listed above. Data was suppressed for those industries.

Shift-Share Analysis of employment gives us the ability to separate local employment growth factors from national employment growth factors, thus gaining a better understanding of our local economy. The analysis is primarily used to decompose employment changes within a region over a specific period of time into growth that is attributed to growth of the national economy; growth that is attributed to the mix of faster or slower than average growing industries; and growth that is attributed to the competitive nature of the local industry. National Growth Share measures the number of jobs created locally due to national economic trends. Industrial Mix Share measures if the local industry is weighted toward industries that are growing faster or slower than the national average. Local share or Regional shift helps to measure whether local industries are growing faster or slower than similar industries at the national level, or it may answer whether local businesses are more or less competitive than the

national average. We will separate the industries in Health Care into to categories Advantage Industries (competitive) and Disadvantage Industries (uncompetitive) using the Local share.

Advantage Industries in Health Care

- Ambulatory Health Care Services
- Office of Physicians
- Offices of Dentists
- Offices of Other Health Practitioners
- Nursing and Residential Care Facilities

Disadvantage Industries in Health Care

- Residential Mental Health Facilities
- Community Care Facilities for the Elderly

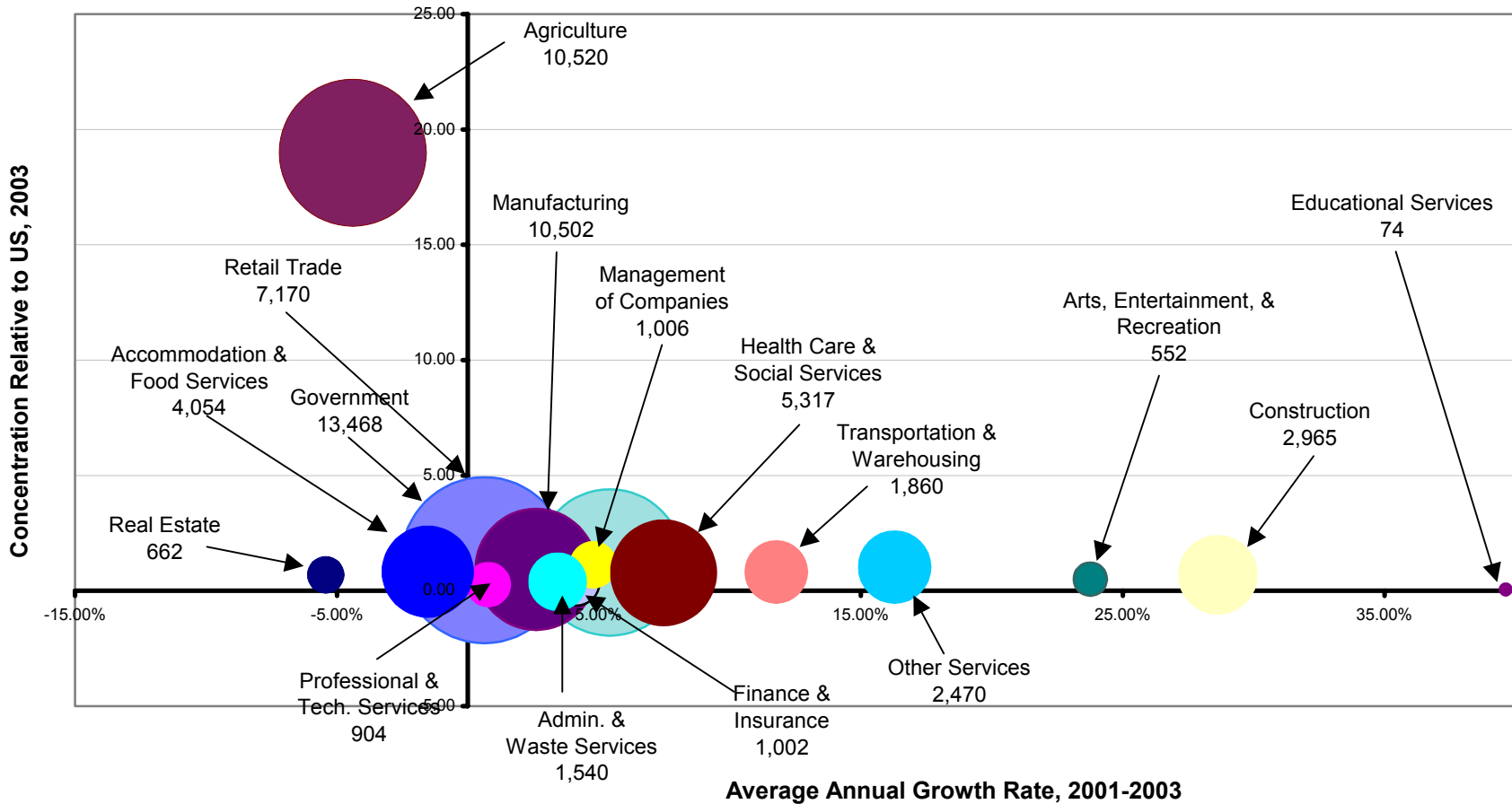
Industries not listed above for Health Care

- Nursing Care Facilities (data suppression)
- Other Residential Care Facilities (data suppression)
- Office of Dentists (border line industry)
- Outpatient Care Centers (border line industry)

Over all, as we combine the LQ with the shift-share, we can see that Residential Mental Health Facilities and Community Care Facilities for the Elderly have the least opportunity of increasing our local employment in the Health Care sector. Offices of Physicians offers Merced County the greatest increase in employment.

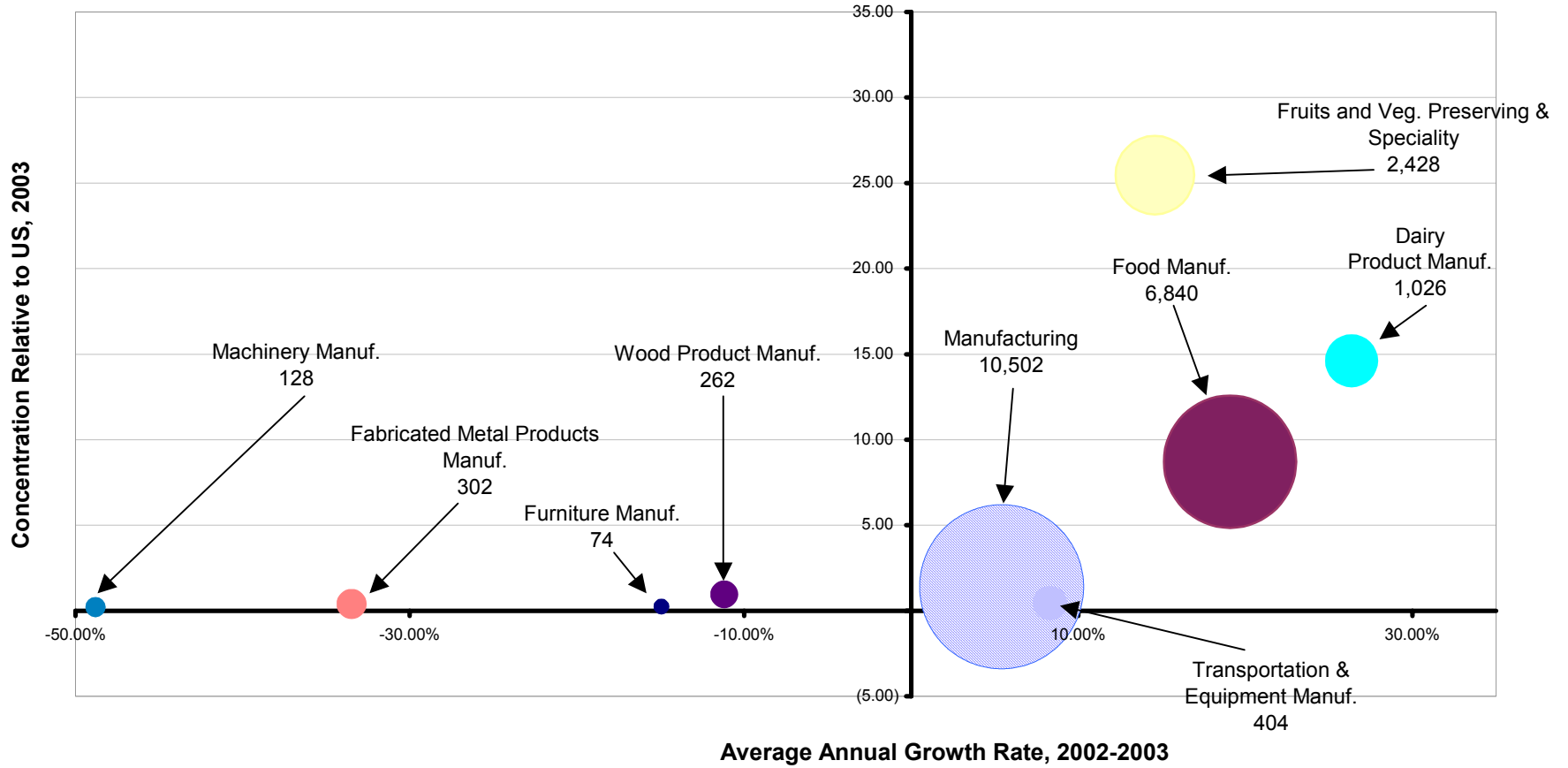
Keep in mind, however, that this is a descriptive tool rather than a diagnostic tool. The shift-share analysis does not tell us why some local industries are more competitive or not. Potential factors could include, local wage rates, workforce productivity. Also, adding in your own qualitative information to the quantitative data will complete the industrial picture.

**Growth, Employment Size, and Concentration to U.S. (Location Quotient)
for All Sectors, Merced County 2001-2003**



- Size: Current Economic Impact - Determines if an industry is a significant component of component of industrial employment in Merced County (Area of Bubble).
- Annual Average Growth: Job Creation - Show how various components have weathered market forces in their subsequent employment generation.
- Concentration: Regional Specialization - A concentration of greater than 1 indicates that the region is more specialized in the industry compared with U.S. or California*. Specialization generally reflects competitiveness and outward orientation.

**Growth, Employment Size, and Concentration to U.S. (Location Quotient)
for Manufacturing Sector/Sub-Sector/Industrial Group, Merced County 2002-2003**



**Growth, Employment Size, and Concentration to U.S. (Location Quotient)
for Health Care and Social Services Sector/Industrial Group, Merced County 2002-2003**

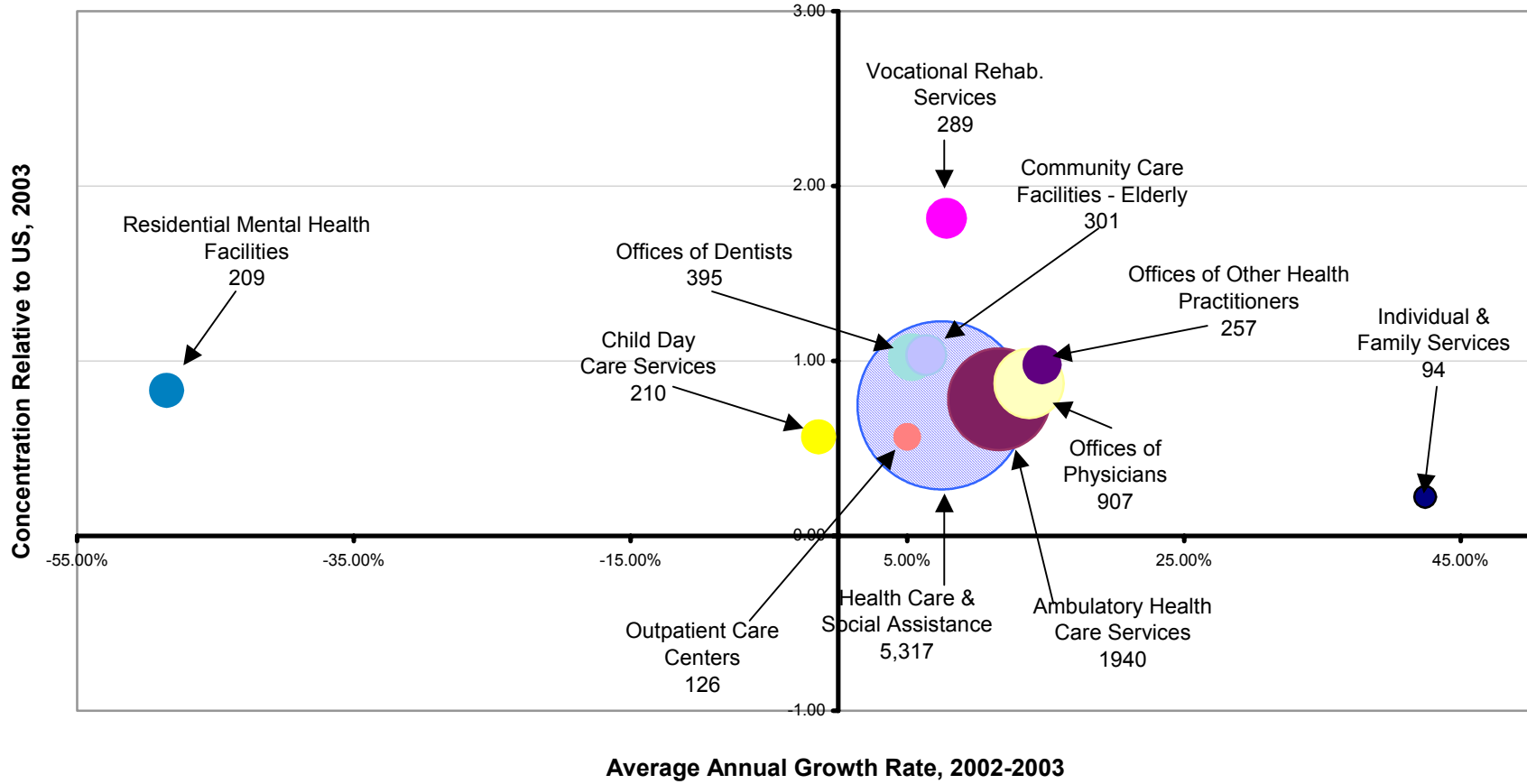


Table 1: EMPLOYMENT TRENDS IN MANUFACTURING - MERCED COUNTY 1994-2000

| Employment, Growth, and Location Quotient, 2001 - 2003 | | | | | | | | | | | |
|---|------------|--------|--------------|--------|--------|--------------|---------|-------|-------------------|-------|-----------------------------|
| Industry Title | Employment | | | | | | Growth | | Location Quotient | | Change in Location Quotient |
| | 2001 | | | 2003 | | | Percent | Net | 2001 | 2003 | 2001-2003 |
| | Level | Share | Sector Share | Level | Share | Sector Share | | | | | |
| Total, All Industries | 64,170 | 100.0% | | 66,359 | 100.0% | | 3.41% | 2,189 | 1.33 | 1.25 | -0.059 |
| NAICS 31-33 Manufacturing | 9,962 | 15.5% | 100.0% | 10,502 | 15.83% | 100.00% | 5.42% | 540 | 1.23 | 1.40 | 0.14 |
| NAICS 311 Food manufacturing | 5,744 | 9.0% | 57.7% | 6,840 | 10.31% | 65.13% | 19.08% | 1,096 | 7.46 | 8.70 | 0.17 |
| NAICS 3114 Fruit and vegetable preserving and specialty | 2,119 | 3.3% | 21.3% | 2,428 | 3.66% | 23.12% | 14.58% | 309 | 21.62 | 25.46 | 0.18 |
| NAICS 3115 Dairy product manufacturing | 812 | 1.3% | 8.2% | 1,026 | 1.55% | 9.77% | 26.35% | 214 | 12.10 | 14.61 | 0.21 |
| NAICS 321 Wood product manufacturing | 295 | 0.5% | 3.0% | 262 | 0.39% | 2.49% | -11.19% | (33) | 1.04 | 0.94 | -0.10 |
| NAICS 332 Fabricated metal product manufacturing | 454 | 0.7% | 4.6% | 302 | 0.46% | 2.88% | -33.48% | (152) | 0.55 | 0.39 | -0.28 |
| NAICS 333 Machinery manufacturing | 250 | 0.4% | 2.5% | 128 | 0.19% | 1.22% | -48.80% | (122) | 0.37 | 0.22 | -0.42 |
| NAICS 336 Transportation equipment manufacturing | 373 | 0.6% | 3.7% | 404 | 0.61% | 3.85% | 8.31% | 31 | 0.39 | 0.44 | 0.13 |
| NAICS 337 Furniture and related product manufacturing | 87 | 0.1% | 0.9% | 74 | 0.11% | 0.70% | -14.94% | (13) | 0.27 | 0.25 | -0.09 |
| NAICS 339 Miscellaneous manufacturing | 58 | 0.1% | 0.6% | 77 | 0.12% | 0.73% | 32.76% | 19 | 0.16 | 0.22 | 0.36 |

EMPLOYMENT TRENDS IN HEALTH CARE AND SOCIAL SERVICES - MERCED COUNTY 1994-2000

Employment, Growth, and Location Quotient, 2001 - 2003

| Industry Title | Employment | | | | | | Growth | | Location Quotient | | Change in Location |
|--|------------|--------|--------------|--------|--------|--------------|---------|-------|-------------------|------|--------------------|
| | 2001 | | | 2003 | | | Percent | Net | 2001 | 2003 | 2001-2003 |
| | Level | Share | Sector Share | Level | Share | Sector Share | | | | | |
| Total, All Industries | 64,170 | 100.0% | | 66,359 | 100.0% | | 3.41% | 2,189 | 1.33 | 1.25 | -0.059 |
| NAICS 62 Health care and social assistance | 4,947 | 7.7% | 100.0% | 5,317 | 8.01% | 100.00% | 7.48% | 370 | 0.77 | 0.75 | -0.03 |
| NAICS 621 Ambulatory health care services | 1,738 | 2.7% | 35.1% | 1,940 | 2.92% | 36.49% | 11.62% | 202 | 0.79 | 0.78 | -0.01 |
| NAICS 6211 Offices of physicians | 797 | 1.2% | 16.1% | 907 | 1.37% | 17.06% | 13.80% | 110 | 0.84 | 0.87 | 0.03 |
| NAICS 6212 Offices of dentists | 375 | 0.6% | 7.6% | 395 | 0.60% | 7.43% | 5.33% | 20 | 1.08 | 1.02 | -0.05 |
| NAICS 6213 Offices of other health practitioners | 224 | 0.3% | 4.5% | 257 | 0.39% | 4.83% | 14.73% | 33 | 0.99 | 0.98 | -0.01 |
| NAICS 6214 Outpatient care centers | 120 | 0.2% | 2.4% | 126 | 0.19% | 2.37% | 5.00% | 6 | 0.61 | 0.57 | -0.07 |
| NAICS 623 Nursing and residential care facilities | 1,135 | 1.8% | 22.9% | 1,244 | 1.87% | 23.40% | 9.60% | 109 | 0.86 | 0.86 | 0.00 |
| NAICS 6231 Nursing care facilities | N | N | N | 575 | 0.87% | 10.81% | N | N | N | 0.71 | N |
| NAICS 6232 Residential mental health facilities | 406 | 0.6% | 8.2% | 209 | 0.31% | 3.93% | -48.52% | (197) | 1.79 | 0.83 | -0.54 |
| NAICS 6233 Community care facilities for the elderly | 283 | 0.4% | 5.7% | 301 | 0.45% | 5.66% | 6.36% | 18 | 1.15 | 1.03 | -0.10 |
| NAICS 6239 Other residential care facilities | N | N | N | 159 | 0.24% | 2.99% | N | N | 0.00 | 1.86 | N |
| NAICS 6241 Individual and family services | 66 | 0.1% | 1.3% | 94 | 0.14% | 1.77% | 42.42% | 28 | 0.18 | 0.22 | 0.21 |
| NAICS 6243 Vocational rehabilitation services | 268 | 0.4% | 5.4% | 289 | 0.44% | 5.44% | 7.84% | 21 | 1.78 | 1.82 | 0.02 |
| NAICS 6244 Child day care services | 213 | 0.3% | 4.3% | 210 | 0.32% | 3.95% | -1.41% | (3) | 0.62 | 0.57 | -0.08 |
| N - Data suppressed due to confidentiality | | | | | | | | | | | |

SHIFT-SHARE ANALYSIS OF MERCED COUNTY—2001-2003

Manufacturing

| Industrial Title | Shift-Share Components of Employment Growth | | | | | |
|---|---|------|--------------|--------|----------------|-------|
| | National Growth | | Industry Mix | | Regional Shift | |
| | Percent | Net | Percent | Net | Percent | Net |
| NAICS 31-33 Manufacturing | -1.41% | -141 | -10.27% | -1,023 | 17.11% | 1,704 |
| NAICS 311 Food manufacturing | -1.41% | -81 | -1.23% | -71 | 21.73% | 1,248 |
| NAICS 3114 Fruit and vegetable preserving and specialty | -1.41% | -30 | -5.82% | -123 | 21.82% | 462 |
| NAICS 3115 Dairy product manufacturing | -1.41% | -11 | 1.21% | 10 | 26.56% | 216 |
| NAICS 321 Wood product manufacturing | -1.41% | -4 | -4.94% | -15 | -4.83% | -14 |
| NAICS 332 Fabricated metal product manufacturing | -1.41% | -6 | -10.09% | -46 | -21.97% | -100 |
| NAICS 333 Machinery manufacturing | -1.41% | -4 | -14.36% | -36 | -33.03% | -83 |
| NAICS 336 Transportation equipment manufacturing | -1.41% | -5 | -6.90% | -26 | 16.63% | 62 |
| NAICS 337 Furniture and related product manufacturing | -1.41% | -1 | -9.86% | -9 | -3.67% | -3 |
| NAICS 339 Miscellaneous manufacturing | -1.41% | -1 | -5.56% | -3 | 39.74% | 23 |

SHIFT-SHARE ANALYSIS OF MERCED COUNTY—2001-2003

Health Care and Social Services

| Industrial Title | Shift-Share Components of Employment Growth | | | | | |
|--|---|-----|--------------|-----|----------------|------|
| | National Growth | | Industry Mix | | Regional Shift | |
| | Percent | Net | Percent | Net | Percent | Net |
| NAICS 62 Health care and social assistance | -1.41% | -70 | 7.23% | 358 | 1.66% | 82 |
| NAICS 621 Ambulatory health care services | -1.41% | -25 | 8.80% | 153 | 4.23% | 74 |
| NAICS 6211 Offices of physicians | -1.41% | -11 | 6.41% | 51 | 8.81% | 70 |
| NAICS 6212 Offices of dentists | -1.41% | -5 | 7.12% | 27 | -0.37% | -1 |
| NAICS 6213 Offices of other health practitioners | -1.41% | -3 | 12.21% | 27 | 3.94% | 9 |
| NAICS 6214 Outpatient care centers | -1.41% | -2 | 8.51% | 10 | -2.10% | -3 |
| NAICS 623 Nursing and residential care facilities | -1.41% | -16 | 5.86% | 67 | 5.15% | 58 |
| NAICS 6231 Nursing care facilities | -1.41% | N | 3.17% | N | N | N |
| NAICS 6232 Residential mental health facilities | -1.41% | -6 | 7.37% | 30 | -54.48% | -221 |
| NAICS 6233 Community care facilities for the elderly | -1.41% | -4 | 13.93% | 39 | -6.15% | -17 |
| NAICS 6239 Other residential care facilities | -1.41% | N | 2.43% | N | N | N |
| NAICS 6241 Individual and family services | -1.41% | -1 | 13.96% | 9 | 29.87% | 20 |
| NAICS 6243 Vocational rehabilitation services | -1.41% | -4 | 2.46% | 7 | 6.78% | 18 |
| NAICS 6244 Child day care services | -1.41% | -3 | 3.64% | 8 | -3.63% | -8 |
| N - Data suppressed due to confidentiality | | | | | | |

| Occupations in Health Care |
|---|
| Occupation Title |
| Accountants and Auditors |
| All other counselors, social and religious workers |
| All other drafters, engineering, and mapping techn |
| All other financial, information, and record clerk |
| All other material recording, scheduling, dispatch |
| All other secretaries, administrative assistants, |
| All other teachers, primary, secondary, and adult |
| Ambulance Drivers and Attendants, Except EMT |
| Anesthesiologists |
| Athletic Trainers |
| Audiologists |
| Bill and Account Collectors |
| Billing and Posting Clerks and Machine Operators |
| Biochemists and Biophysicists |
| Biomedical Engineers |
| Bookkeeping, Accounting, and Auditing Clerks |
| Budget Analysts |
| Business Operations Specialists, All Other |
| Cardiovascular Technologists and Technicians |
| Carpenters |
| Cashiers |
| Chefs and Head Cooks |
| Chief Executives |
| Child Care Workers |
| Child, Family, and School Social Workers |
| Clergy |
| Clinical, Counseling, and School Psychologists |
| Combined Food Preparation and Serving Workers, Including Fast Food |
| Compliance Officers, Except Ag, Constr, Health-Safety, and Transportation |
| Computer Operators |
| Computer Programmers |
| Computer Software Engineers, Applications |
| Computer Specialists, All Other |
| Computer Support Specialists |
| Computer Systems Analysts |
| Cooks, Institution and Cafeteria |
| Cooks, Short Order |
| Counter Attendants, Cafeteria, Food Concession, and Coffee Shop |

| |
|---|
| Couriers and Messengers |
| Credit Authorizers, Checkers, and Clerks |
| Customer Service Representatives |
| Data Entry Keyers |
| Database Administrators |
| Dental Assistants |
| Dentists |
| Diagnostic Medical Sonographers |
| Dietetic Technicians |
| Dietitians and Nutritionists |
| Dining Room and Cafeteria Attendants and Bartender Helpers |
| Dishwashers |
| Dispatchers, Except Police, Fire, and Ambulance |
| Electrical and Electronic Engineering Technicians |
| Electricians |
| Eligibility Interviewers, Government Programs |
| Emergency Medical Technicians and Paramedics |
| Employment, Recruitment, and Placement Specialists |
| Engineers, All Other |
| Environmental Scientists and Specialists, Including Health |
| Executive Secretaries and Administrative Assistants |
| Family and General Practitioners |
| File Clerks |
| Financial Analysts |
| Financial Specialists, All Other |
| First-Line Sup/Mgrs of Construction Trades and Extraction Workers |
| First-Line Sup/Mgrs of Office and Administrative Support Workers |
| First-Line Sup/Mgrs of Trans and Material-Moving Vehicle Operators |
| First-Line Supervisors/Managers of Food Preparation and Serving Workers |
| First-Line Supervisors/Managers of Housekeeping and Janitorial Workers |
| First-Line Supervisors/Managers of Mechanics, Installers, and Repairers |
| First-Line Supervisors/Managers of Production and Operating Workers |
| First-Line Supervisors/Managers of Retail Sales Workers |
| First-Line Supervisors/Managers, Protective Service Workers, All Other |
| Fitness Trainers and Aerobics Instructors |
| Food Preparation and Serving Related Workers, All Other |
| Food Preparation Workers |
| General and Operations Managers |
| Graphic Designers |

| Occupations in Health Care - Continued |
|---|
| Occupational Title |
| Health Diagnosing and Treating Practitioners, All Other |
| Health Educators |
| Health professionals and technicians, all other |
| Healthcare Support Workers, All Other |
| Heating, Air Conditioning, and Refrigeration Mechanics and Installers |
| Home Health Aides |
| Hosts and Hostesses, Restaurant, Lounge, and Coffee Shop |
| Human Resources Assistants, Except Payroll and Timekeeping |
| Industrial Machinery Mechanics |
| Instructional Coordinators |
| Insurance Claims and Policy Processing Clerks |
| Insurance Underwriters |
| Internists, General |
| Interpreters and Translators |
| Interviewers, Except Eligibility and Loan |
| Janitors and Cleaners, Except Maids and Housekeeping Cleaners |
| Laborers and Freight, Stock, and Material Movers, Hand |
| Landscaping and Groundskeeping Workers |
| Laundry and Dry-Cleaning Workers |
| Librarians |
| Library Technicians |
| Licensed Practical and Licensed Vocational Nurses |
| Life Scientists, All Other |
| Life, Physical, and Social Science Technicians, All Other |
| Maids and Housekeeping Cleaners |
| Mail Clerks and Mail Machine Operators, Except Postal Service |
| Maintenance and Repair Workers, General |
| Maintenance Workers, Machinery |
| Management Analysts |
| Market Research Analysts |
| Marriage and Family Therapists |
| Media and Communication Workers, All Other |
| Medical and Clinical Laboratory Technicians |
| Medical and Clinical Laboratory Technologists |
| Medical and Public Health Social Workers |
| Medical Assistants |
| Medical Equipment Preparers |
| Medical Equipment Repairers |

| |
|--|
| Medical Records and Health Information Technicians |
| Medical Scientists, Except Epidemiologists |
| Medical Secretaries |
| Medical Transcriptionists |
| Meeting and Convention Planners |
| Mental Health and Substance Abuse Social Workers |
| Mental Health Counselors |
| Microbiologists |
| Network and Computer Systems Administrators |
| Network Systems and Data Communications Analysts |
| Nuclear Medicine Technologists |
| Nursing Aides, Orderlies, and Attendants |
| Nursing Instructors and Teachers, Postsecondary |
| Obstetricians and Gynecologists |
| Occupational Health and Safety Specialists and Technicians |
| Occupational Therapist Aides |
| Occupational Therapist Assistants |
| Occupational Therapists |
| Office Clerks, General |
| Office Machine Operators, Except Computer |
| Operations Research Analysts |
| Opticians, Dispensing |
| Order Clerks |
| Orthotists and Prosthetists |
| Parking Lot Attendants |
| Payroll and Timekeeping Clerks |
| Pediatricians, General |
| Personal and Home Care Aides |
| Personal Care and Service Workers, All Other |
| Pharmacists |
| Pharmacy Aides |
| Pharmacy Technicians |
| Physical Therapist Aides |
| Physical Therapist Assistants |
| Physical Therapists |
| Physician Assistants |
| Physicians and Surgeons, All Other |
| Physicists |

| Occupations in Health Care (Continued) |
|--|
| Occupational Title |
| Podiatrists |
| Police, Fire, and Ambulance Dispatchers |
| Preschool Teachers, Except Special Education |
| Procurement Clerks |
| Production, Planning, and Expediting Clerks |
| Protective Service Workers, All Other |
| Psychiatric Aides |
| Public Relations Specialists |
| Purchasing Agents, Except Wholesale, Retail, and Farm Products |
| Radiation Therapists |
| Radiologic Technologists and Technicians |
| Receptionists and Information Clerks |
| Recreation Workers |
| Registered Nurses |
| Respiratory Therapists |
| Respiratory Therapy Technicians |
| Sales and Related Workers, All Other |
| Secretaries, Except Legal, Medical, and Executive |
| Security Guards |
| Shipping, Receiving, and Traffic Clerks |
| Social and Human Service Assistants |
| Speech-Language Pathologists |
| Stationary Engineers and Boiler Operators |
| Statistical Assistants |
| Stock Clerks and Order Fillers |
| Substance Abuse and Behavioral Disorder Counselors |
| Surgical Technologists |
| Switchboard Operators, Including Answering Service |
| Taxi Drivers and Chauffeurs |
| Training and Development Specialists |
| Truck Drivers, Light or Delivery Services |
| Word Processors and Typists |

| Occupations in Manufacturing - Food Manufacturing |
|---|
| Occupation Title |
| Accountants and Auditors |
| Agricultural and Food Science Technicians |
| Agricultural and Food Scientists |
| All other food processing workers |
| Billing and Posting Clerks and Machine Operators |
| Biological Technicians |
| Bookkeeping, Accounting, and Auditing Clerks |
| Cashiers |
| Chemical Technicians |
| Chemists |
| Chief Executives |
| Cleaners of Vehicles and Equipment |
| Cleaning, Washing, and Metal Pickling Equipment Operators and Tenders |
| Cooling and Freezing Equipment Operators and Tenders |
| Customer Service Representatives |
| Cutting and Slicing Machine Setters, Operators, and Tenders |
| Driver/Sales Workers |
| Executive Secretaries and Administrative Assistants |
| Extruding, Forming, Pressing, and Compacting Machine Operators |
| Financial Managers |
| First-Line Sup/Mgrs of Helpers, Laborers, and Material Movers, Hand |
| First-Line Sup/Mgrs of Office and Administrative Support Workers |
| First-Line Sup/Mgrs of Trans and Material-Moving Vehicle Operators |
| First-Line Supervisors/Managers of Mechanics, Installers, and Repairers |
| First-Line Supervisors/Managers of Production and Operating Workers |
| Food and Tobacco Roasting, Baking, and Drying Machine Operators and Tenders |
| Food Batchmakers |
| Food Cooking Machine Operators and Tenders |
| General and Operations Managers |
| Helpers--Production Workers |
| Industrial Engineers |
| Industrial Machinery Mechanics |
| Industrial Production Managers |
| Industrial Truck and Tractor Operators |
| Inspectors, Testers, Sorters, Samplers, and Weighers |
| Janitors and Cleaners, Except Maids and Housekeeping Cleaners |
| Laborers and Freight, Stock, and Material Movers, Hand |
| Machine Feeders and Offbearers |
| Maintenance and Repair Workers, General |
| Mixing and Blending Machine Setters, Operators, and Tenders |
| Office Clerks, General |

| |
|--|
| Order Clerks |
| Packaging and Filling Machine Operators and Tenders |
| Packers and Packagers, Hand |
| Production Workers, All Other |
| Production, Planning, and Expediting Clerks |
| Purchasing Agents, Except Wholesale, Retail, and Farm Products |
| Sales Managers |
| Sales Rep, Wholesale and Manuf, Except Technical and Scientific Products |
| Separating, Filtering, Machine Setters, Operators, and Tenders |
| Shipping, Receiving, and Traffic Clerks |
| Stationary Engineers and Boiler Operators |
| Stock Clerks and Order Fillers |
| Team Assemblers |
| Transportation, Storage, and Distribution Managers |
| Truck Drivers, Heavy and Tractor-Trailer |
| Truck Drivers, Light or Delivery Services |

| Occupations in Manufacturing - Transportation Equipment Manufacturing |
|--|
| Occupation Title |
| Assemblers and Fabricators, All Other |
| Automotive Service Technicians and Mechanics |
| Billing and Posting Clerks and Machine Operators |
| Bookkeeping, Accounting, and Auditing Clerks |
| Bus and Truck Mechanics and Diesel Engine Specialists |
| Cementing and Gluing Machine Operators and Tenders |
| Coating, Painting, and Spraying Machine Setters, Operators, and Tenders |
| Computer-Controlled Machine Tool Operators, Metal and Plastic |
| Crushing, Grinding, and Polishing Machine Setters, Operators, and Tenders |
| Customer Service Representatives |
| Cutting, Punching, and Press Machine Operators, Metal and Plastic |
| Drilling and Boring Machine Tool Operators, Metal and Plastic |
| Electrical and Electronic Engineering Technicians |
| Electrical and Electronic Equipment Assemblers |
| Electricians |
| Electromechanical Equipment Assemblers |
| Engine and Other Machine Assemblers |
| Executive Secretaries and Administrative Assistants |
| Extruding and Drawing Machine Operators, Metal and Plastic |
| Fiberglass Laminators and Fabricators |
| Financial Managers |
| First-Line Sup/Mgrs of Office and Administrative Support Workers |
| First-Line Supervisors/Managers of Mechanics, Installers, and Repairers |
| First-Line Supervisors/Managers of Production and Operating Workers |
| Forging Machine Setters, Operators, and Tenders, Metal and Plastic |
| Foundry Mold and Coremakers |
| Grinding and Polishing Workers, Hand |
| Grinding, Lapping, Polishing, Buffing Machine Operators, Metal and Plastic |
| Helpers--Production Workers |
| Industrial Engineering Technicians |
| Industrial Machinery Mechanics |
| Industrial Production Managers |
| Industrial Truck and Tractor Operators |
| Inspectors, Testers, Sorters, Samplers, and Weighers |
| Janitors and Cleaners, Except Maids and Housekeeping Cleaners |
| Laborers and Freight, Stock, and Material Movers, Hand |
| Lathe and Turning Machine Tool Operators, Metal and Plastic |
| Machinists |
| Maintenance and Repair Workers, General |
| Maintenance Workers, Machinery |
| Metal Workers and Plastic Workers, All Other |
| Metal-Refining Furnace Operators and Tenders |
| Milling and Planing Machine Operators, Metal and Plastic |

| |
|--|
| Molding, Coremaking, and Casting Machine Operators, Metal and Plastic |
| Multiple Machine Tool Setters, Operators, and Tenders, Metal and Plastic |
| Numerical Tool and Process Control Programmers |
| Office Clerks, General |
| Order Clerks |
| Packers and Packagers, Hand |
| Production Workers, All Other |
| Production, Planning, and Expediting Clerks |
| Sales Rep, Wholesale and Manuf, Except Technical and Scientific Products |
| Secretaries, Except Legal, Medical, and Executive |
| Sewing Machine Operators |
| Shipping, Receiving, and Traffic Clerks |
| Stock Clerks and Order Fillers |
| Structural Metal Fabricators and Fitters |
| Team Assemblers |
| Tool and Die Makers |
| Truck Drivers, Light or Delivery Services |
| Welders, Cutters, Solderers, and Brazers |