



The Quick Look

A Merced County Labor Market Review - March 2008

Welcome to the Merced County labor market review. The Quick Look has been developed by the Department of Workforce Investment staff for the Merced County Local Workforce Investment Board. The data and information is provided by the California Employment Development Department. Questions can be referred to the Department of Workforce Investment, 1880 West Wardrobe Avenue, Merced, CA 95340. Telephone (209) 724-2042. Email: pitd26@co.merced.ca.us or to EDD's Labor Market Information Division at (916) 262-2162.

Merced County Data not adjusted for Seasonality	Labor Force and Industrial Employment					
	March 2006 Benchmark				Percent Change	
	Mar 07	Jan 08	Feb 08	Mar 08	Month	Year
Civilian Labor Force	100,100	105,100	105,300	105,700	0.4%	5.6%
Civilian Employment	88,900	91,300	91,200	91,200	0.0%	2.6%
Civilian Unemployment	11,200	13,800	14,100	14,500	2.8%	29.5%
Civilian Unemployment Rate	11.2%	13.2%	13.4%	13.7%		
(CA Unemployment Rate)	5.1%	6.4%	6.1%	6.4%		
(U.S. Unemployment Rate)	4.5%	5.4%	5.2%	5.2%		
Total, All Industries	66,900	68,400	68,800	69,200	0.6%	3.4%
Total Farm	8,600	10,000	10,100	10,200	1.0%	18.6%
Total Nonfarm	58,300	58,400	58,700	59,000	0.5%	1.2%
Total Private	43,000	42,700	42,800	42,900	0.2%	-0.2%
Goods Producing	12,300	11,800	11,800	11,800	0.0%	-4.1%
Natural Resources and Mining and Constuction	3,300	2,800	2,800	2,800	0.0%	-15.2%
Construction	3,300	2,800	2,800	2,800	0.0%	-15.2%
Manufacturing	9,000	9,000	9,000	9,000	0.0%	0.0%
Durable Goods	1,900	1,700	1,800	1,800	0.0%	-5.3%
Nondurable Goods	7,100	7,300	7,200	7,200	0.0%	1.4%
Service Providing	46,000	46,600	46,900	47,200	0.6%	2.6%
Private Service Producing	30,700	30,900	31,000	31,100	0.3%	1.3%
Trade, Transportation and Utilities	11,700	11,800	11,700	11,800	0.9%	0.9%
Wholesale Trade	1,800	1,800	1,800	1,800	0.0%	0.0%
Retail Trade	7,700	7,900	7,800	7,900	1.3%	2.6%
Food and Beverage Stores	1,600	1,700	1,700	1,700	0.0%	6.3%
General Merchandise Stores	1,700	1,900	1,800	1,800	0.0%	5.9%
Residual - Miscellaneous Store Retailers	4,400	4,300	4,300	4,400	2.3%	0.0%
Transportation, Warehousing and Utilities	2,200	2,100	2,100	2,100	0.0%	-4.5%
Information	1,400	1,300	1,300	1,300	0.0%	-7.1%
Financial Activities	1,900	1,900	1,900	1,900	0.0%	0.0%
Finance and Insurance	1,200	1,200	1,200	1,200	0.0%	0.0%
Real Estate and Rental and Leasing	700	700	700	700	0.0%	0.0%
Professional and Business Services	3,800	4,200	4,300	4,300	0.0%	13.2%
Educational and Health Services	5,500	5,500	5,500	5,500	0.0%	0.0%
Leisure and Hospitality	4,800	4,800	4,900	4,900	0.0%	2.1%
Food Services and Drinking Places	4,100	4,100	4,200	4,200	0.0%	2.4%
Residual - Arts, Entertainment, and Recreation	700	700	700	700	0.0%	0.0%
Other Services	1,600	1,400	1,400	1,400	0.0%	-12.5%
Government	15,300	15,700	15,900	16,100	1.3%	5.2%
Federal Government	800	800	800	800	0.0%	0.0%
State Government	1,400	1,800	1,800	1,800	0.0%	28.6%
Local Government	13,100	13,100	13,300	13,500	1.5%	3.1%

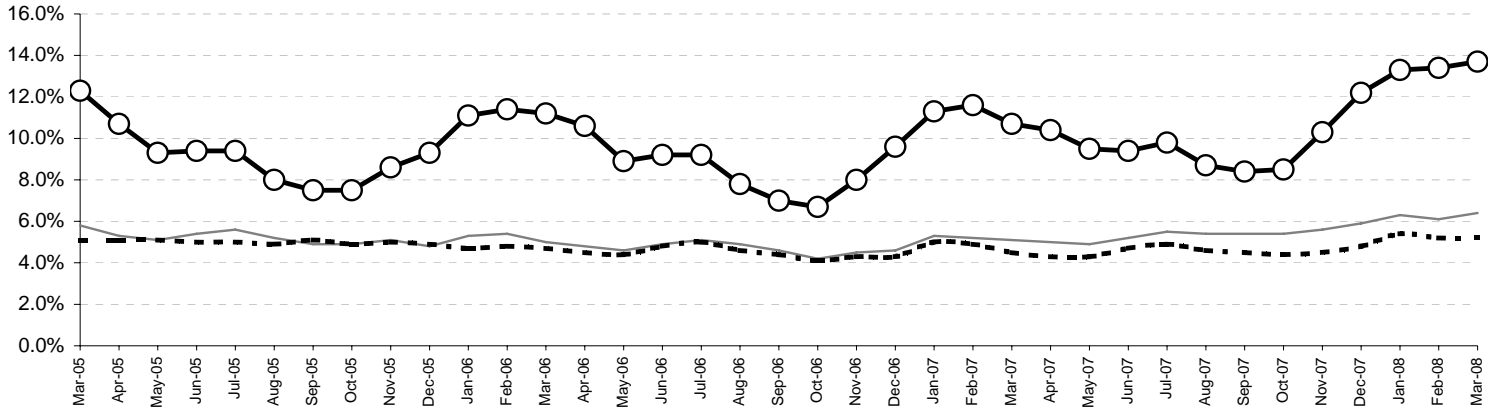
The County continues with one of the highest unemployment rates in the State, ranking 55th out of 58 counties in the month of March. The preliminary result is a increase of .3 percentage point in the unemployment rate from the January rate. For year ago data, this preliminary figure is an increase of 2.5 percentage point in the unemployment rate.

Overall, the County's Civilian Labor Force increased by 400 persons over last month's figure and an increase of 5,600 persons over year ago figure. Industrial employment increased by 400 jobs in February over January's figure and an increase of 2,300 jobs over year ago's figures.

The Quick Look

Nov 2007

**Merced County, California, and the United States
Unemployment Rate
Mar 2005 to Mar 2008**

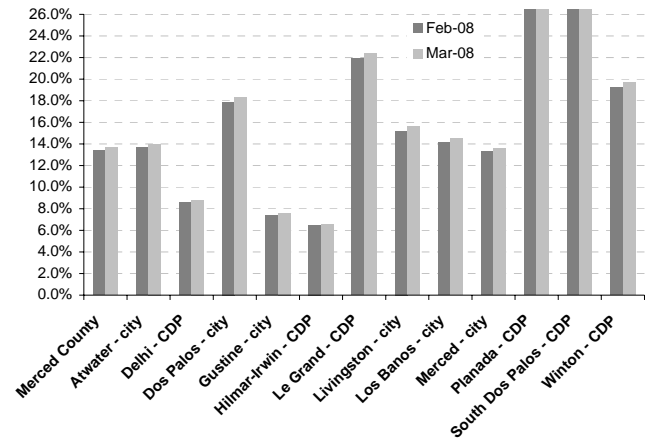


Sub County average unemployment rates for the county, cities, and municipalities.

Area Name	Labor Force	Employment	Unemployment	
			Number	Rate
Merced County	105,700	91,200	14,500	13.7%
Atwater city	12,400	10,700	1,700	14.0%
Delhi CDP	4,100	3,700	400	8.8%
Dos Palos city	2,100	1,700	400	18.3%
Gustine city	2,500	2,300	200	7.6%
Hilmar Irwin CDP	2,800	2,600	200	6.6%
Le Grand CDP	800	600	200	22.4%
Livingston city	5,200	4,400	800	15.6%
Los Banos city	13,200	11,300	1,900	14.5%
Merced city	31,300	27,000	4,300	13.6%
Planada CDP	1,900	1,300	600	31.0%
South Dos Palos CDP	500	300	200	33.3%
Winton CDP	4,000	3,200	800	19.7%

CDP - Census Designated Place

Merced County - Community Unemployment



Merced County's workforce has grown over the past 16 years reflecting improvement of the County's economic well being; however, unemployment remains a consistent barrier to greater prosperity. Average unemployment has fluctuated from an annual low of 9.3 percent to an annual high of 17.5 percent.

Counties in the San Joaquin Valley Quick Look

County	Rank	Labor Force	Employ	Unemployed	Rate
Merced	55	105,700	91,200	14,500	13.7%
Fresno	42	433,300	385,100	48,200	11.1%
Kern	41	352,600	314,500	38,100	10.8%
Kings	46	59,600	52,800	6,800	11.4%
Madera	39	63,400	56,700	6,700	10.6%
San Joaquin	38	301,100	270,200	30,900	10.3%
Stanislaus	45	235,100	208,400	26,700	11.3%
Tulare	49	194,000	170,500	23,500	12.1%
San Joaquin Valley		1,744,800	1,549,400	195,400	11.2%

**Counties in the San Joaquin Valley
Unemployment Rates**

