



The Quick Look

A Merced County Labor Market Review - March 2005

Welcome to the Merced County labor market review. The Quick Look has been developed by the Department of Workforce Investment staff for the Merced County Local Workforce Investment Board. The data and information is provided by the California Employment Development Department. Questions can be referred to the Department of Workforce Investment, 1880 West Wardrobe Avenue, Merced, CA 95340. Telephone (209) 724-2042. Email: pitd26@co.merced.ca.us

Labor Force and Industrial Employment

Merced County Data not adjusted for Seasonality	March 2004 Benchmark					
	Mar 04	Jan 05	Feb 05	Mar 05	Percent Change	
			Revised	Prelim.	Month	Year
Civilian Labor Force	96,600	98,100	99,000	98,300	-0.7%	1.8%
Civilian Employment	82,800	85,600	86,100	86,600	0.6%	4.6%
Civilian Unemployment	13,800	12,500	12,900	11,700	-9.3%	-15.2%
Civilian Unemployment Rate	14.3%	12.7%	13.0%	11.9%		
(CA Unemployment Rate)	7.0%	6.3%	6.2%	5.7%		
(U.S. Unemployment Rate)	6.0%	5.7%	5.8%	5.4%		
Total, All Industries	63,500	65,000	65,000	66,200	1.8%	4.3%
Total Farm	8,000	7,700	7,600	7,900	3.9%	-1.3%
Total Nonfarm	55,500	57,300	57,400	58,300	1.6%	5.0%
Total Private	42,000	43,900	43,600	44,200	1.4%	5.2%
Goods Producing	13,200	14,900	14,700	14,800	0.7%	12.1%
Construction	3,100	3,600	3,500	3,600	2.9%	16.1%
Manufacturing	10,100	11,300	11,200	11,200	0.0%	10.9%
Durable Goods	1,700	1,600	1,600	1,600	0.0%	-5.9%
Nondurable Goods	8,400	9,700	9,600	9,600	0.0%	14.3%
Food Man & Beverage & Tobacco	6,700	8,100	8,000	8,000	0.0%	19.4%
Residual - Textile Mills	1,700	1,600	1,600	1,600	0.0%	-5.9%
Service Providing	42,300	42,400	42,700	43,500	1.9%	2.8%
Private Service Producing	2,880	29,000	28,900	29,400	1.7%	2.1%
Trade, Transportation and Utilities	10,600	10,900	10,800	10,900	0.9%	2.8%
Wholesale Trade	1,300	1,400	1,400	1,400	0.0%	7.7%
Retail Trade	7,300	7,700	7,600	7,600	0.0%	4.1%
Food and Beverage Stores	1,500	1,500	1,500	1,600	6.7%	6.7%
General Merchandise Stores	1,500	1,700	1,700	1,600	-5.9%	6.7%
Residual - Miscellaneous Store Retailers	4,300	4,500	4,400	4,400	0.0%	2.3%
Transportation, Warehousing and Utilities	2,000	1,800	1,800	1,900	5.6%	-5.0%
Information	1,500	1,400	1,400	1,400	0.0%	-6.7%
Financial Activities	1,600	1,800	1,800	1,800	0.0%	12.5%
Finance and Insurance	1,000	1,000	1,000	1,000	0.0%	0.0%
Real Estate and Rental and Leasing	600	800	800	800	0.0%	33.3%
Professional and Business Services	3,300	3,300	3,400	3,600	5.9%	9.1%
Educational and Health Services	5,500	5,500	5,400	5,400	0.0%	-1.8%
Leisure and Hospitality	4,600	4,500	4,500	4,700	4.4%	2.2%
Food Services and Drinking Places	3,900	3,900	3,900	4,000	2.6%	2.6%
Residual - Arts, Entertainment, and Recreation	700	600	600	700	16.7%	0.0%
Other Services	1,700	1,600	1,600	1,600	0.0%	-5.9%
Government	13,500	13,400	13,800	14,100	2.2%	4.4%
Federal Government	800	800	800	800	0.0%	0.0%
State Government	500	500	700	700	0.0%	40.0%
Local Government	12,200	12,100	12,300	12,600	2.4%	3.3%

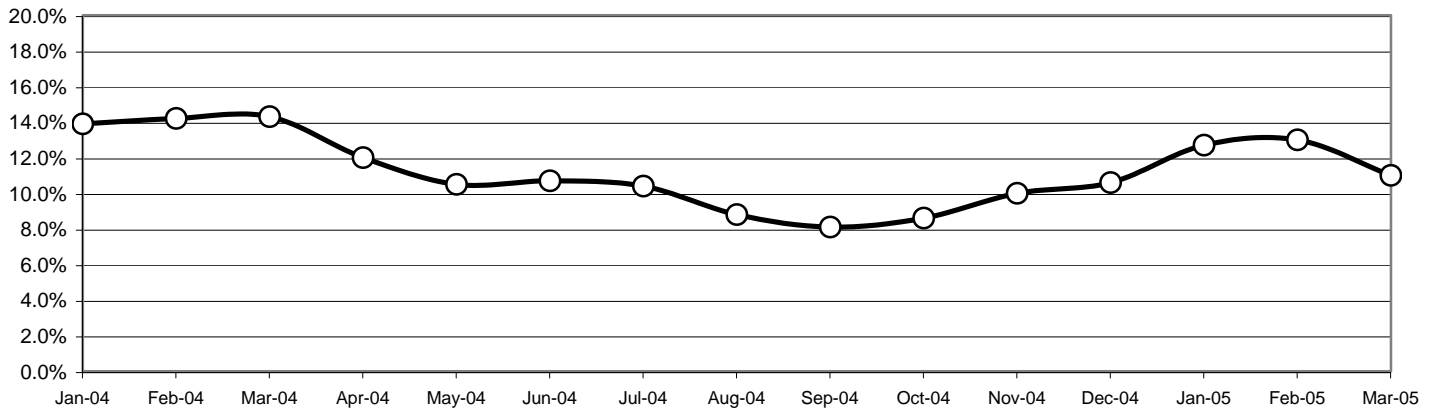
The County continues with one of the highest unemployment rates in the State, ranking 56th out of 58 counties in the Month of March. The preliminary result is a decrease of 1.1 percentage point in the unemployment rate from the revised February rate. This preliminary figure is a decrease of 2.4 percentage point from the unemployment rate of one year ago.

Overall, the County's Civilian Labor Force decreased by 700 persons over last month's figure. Industrial employment increased by 1,200 jobs in March over February's figures.

The Quick Look

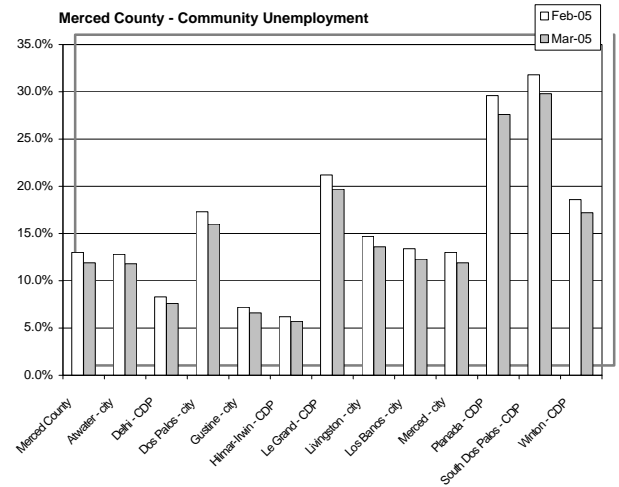
A Merced County Labor Market Review - March 2005

Merced County Unemployment Rate
2004 - 2005



Sub County average unemployment rates for the county, cities, and municipalities.

Area Name	Labor Force	Employment	Unemployment	
			Number	Rate
Merced County	98,300	86,600	11,700	11.9%
Atwater City	11,600	10,200	1,400	11.8%
Delhi CDP	3,800	3,500	300	7.6%
Dos Palos City	1,900	1,600	300	16.0%
Gustine City	2,400	2,200	200	6.6%
Hilmar-Irwin CDP	2,600	2,500	100	5.7%
Le Grand CDP	600	500	100	19.7%
Livingston City	4,900	4,200	700	13.6%
Los Banos City	12,200	10,700	1,500	12.3%
Merced City	29,100	25,600	3,500	11.9%
Planada CDP	1,700	1,200	500	27.6%
South Dos Palos CDP	400	300	100	29.8%
Winton CDP	3,700	3,100	600	17.2%



CDP - Census Designated Place

Merced County's workforce has grown over the past 20 years reflecting improvement of the County's economic well being; however, unemployment remains a consistent barrier to greater prosperity. Average Unemployment has fluctuated from a yearly low of 11.0 percent to a yearly high of 17.3 percent in 1992.

The County's unemployment rate is the third highest in the state. Merced County saw a decrease in the unemployment rate of 2.4 percentage point below February's revised unemployment rate. All seven counties (Merced, Mariposa, Madera, Fresno, San Benito, San Joaquin, and Stanislaus) saw decreases in their unemployment rate.

Seven County Quick Look

County	Rank	Labor Force	Employ	Unemployed	Rate
Merced	56	98,300	86,600	11,700	11.9%
Madera	40	59,600	54,200	5,400	9.1%
Mariposa	35	8,060	7,410	650	8.0%
Fresno	49	393,700	351,500	42,200	10.7%
San Benito	48	25,600	23,000	2,700	10.4%
San Joaquin	38	282,900	259,200	23,700	8.4%
Stanislaus	41	226,600	205,500	21,100	9.3%

Seven County Unemployment Rate

