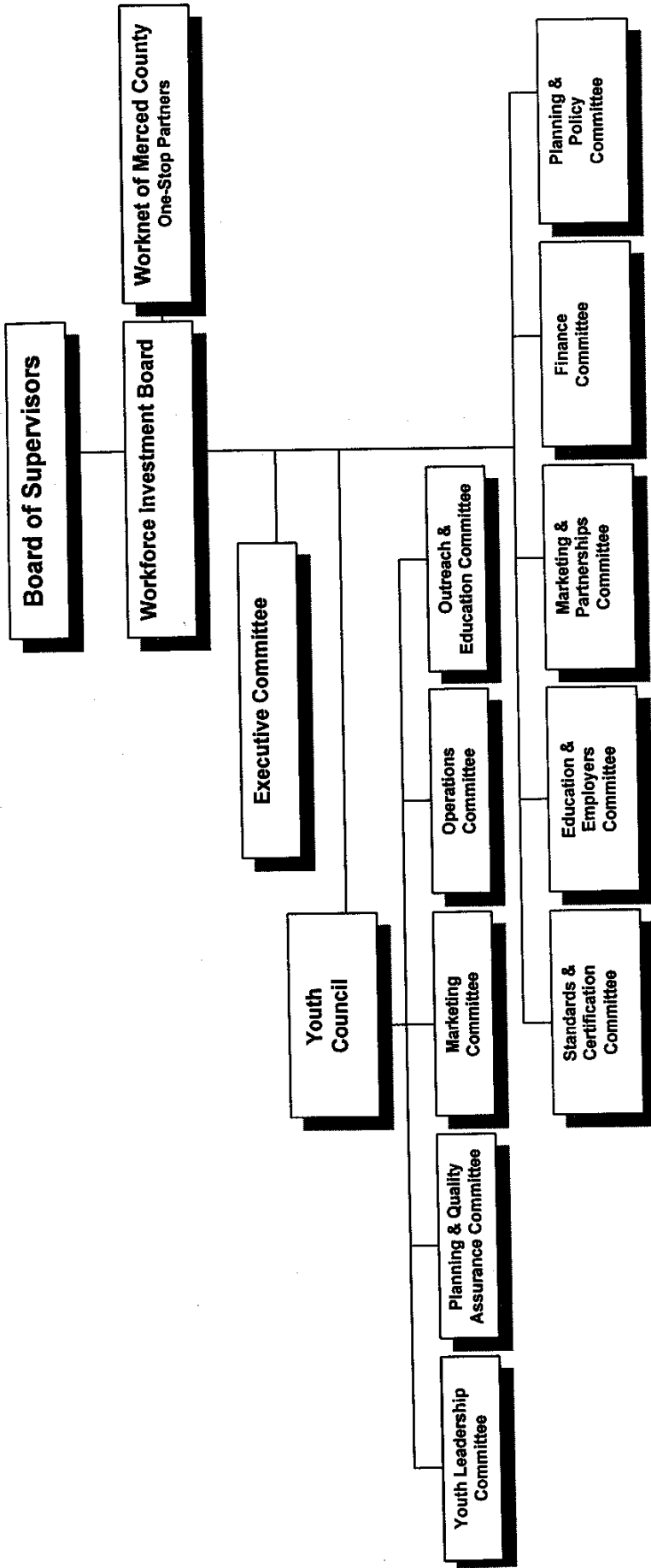
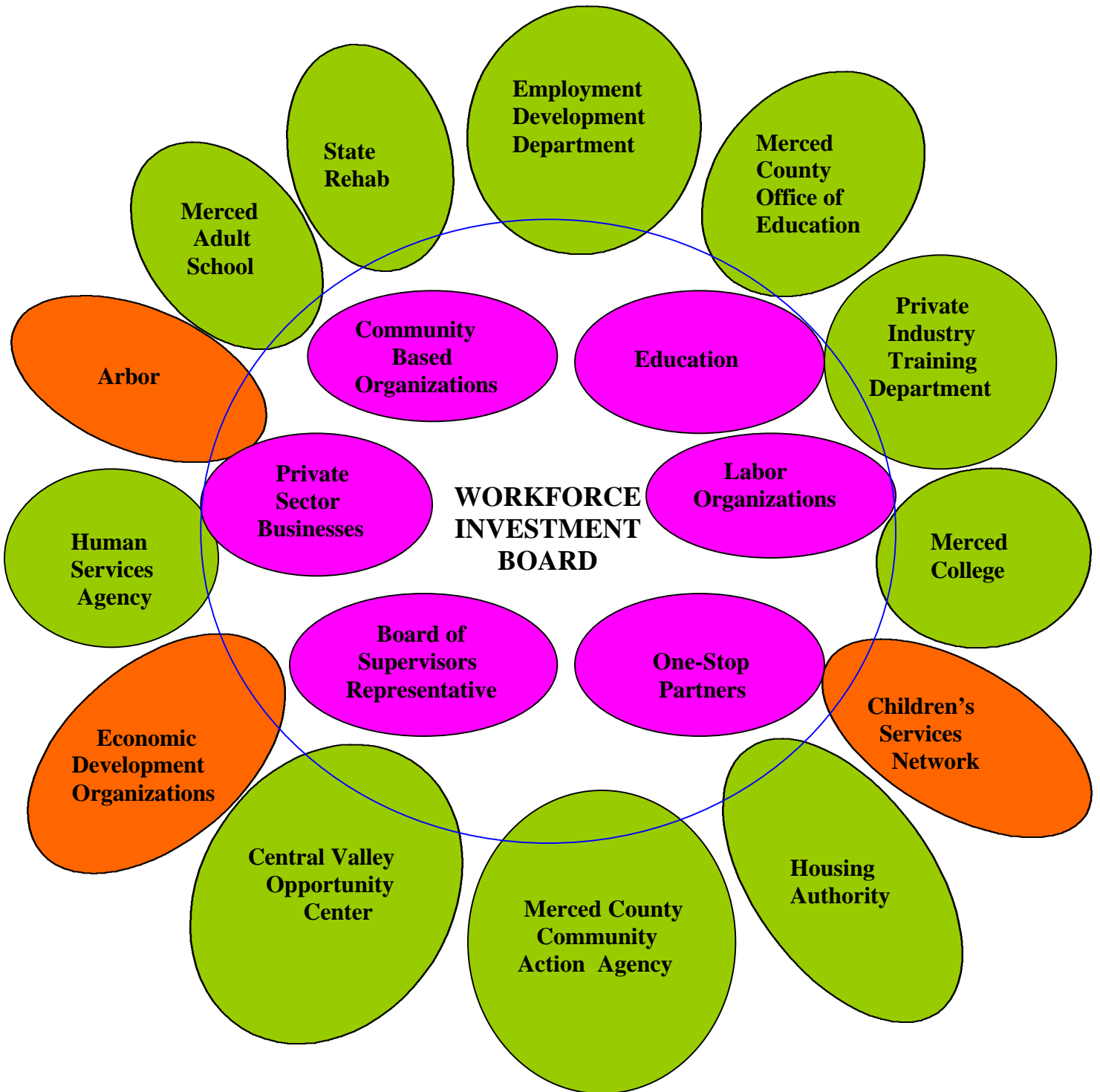


WORKFORCE INVESTMENT BOARD ORGANIZATIONAL CHART



WORKFORCE INVESTMENT BOARD/ONE-STOP CAREER CENTER ORGANIZATIONAL CHART



Mandatory One-Stop Partners - ●
Other Partners - ●
WIB Member Categories - ●

Who is the Workforce Investment Board?

The Merced County Workforce Investment Board is a team of private and public sector partners who share a common goal — promoting the economic prosperity and long-term growth in Merced County.

Our vision is to keep pace with new growth, the emerging economy, and the ever changing needs of the employers by creating a better educated, highly skilled workforce, that is capable, prepared and thoroughly knowledgeable.

The Merced County Workforce Investment Board does this by:

- Being the convener (coordinator, facilitator, influencer) of the workforce system and the standard setter.
- Establishing and promoting education and skill standards.
- Serving the needs of Merced County employers by asking what they need and responding to it.
- Generating new resources (dollars) to the community for innovative programs and services.



WORKFORCE INVESTMENT BOARD MEMBERS

PRIVATE SECTOR

Kathy Andrade - Sierra Beverage Company
Susan Armstrong - County Bank
Don Bergman - Greater Merced Chamber of Commerce
Bob Carpenter - Leap/Carpenter/Kemps Insurance
Sharon Cresswell - Buckley Radio - Merced
Peter Fluetsch - Fluetsch & Busby Insurance
Don Gormly - Anberry Rehabilitation Hospital
Carol Greenburg - Foster Poultry Farms
Robert Harmon - Harmon Insurance Service
John Headding - Mercy Medical Centers, Merced
Diana Ingram - Analytical & Construction Services
Jeff Knapp - J.R. Woods, Inc.
Leo Lamb - Horizon Plastic Products, Inc.
Gisela Malone - Codding Investments/Merced Mall
Tom May - TEMCO, Inc.
Nellie McGarry - Western Motors
Ned Miller - Bloss Memorial Healthcare District
Jack Mobley - Service Master of Merced
Rick Osorio - Osorio Financial/Intervalley Insurance Services
Leslie Peeler - Quebecor World Merced
Alfonse Peterson - Omni Concepts
Al Romero - Valley Auto Wreckers
Mike Smith - Smith & Ransom, CPAs
Mike Sullivan - Golden Valley Health Center
Steve Tinetti - Tinetti Realty Group

COMMUNITY-BASED ORGANIZATIONS

George Brown - American Legion, Merced Post 83
Doreen Crawford - Kings View Work Experience Center
Brian Griffin - National Association for Uniformed Services
David Riordan - Community Social Model Advocates

ECONOMIC DEVELOPMENT ORGANIZATIONS

Bill Cahill - City of Merced Economic Development
John Fowler - Merced County Business-Economic Opportunities
Elaine Trevino - Merced County Economic Development Corp.

EDUCATION

Elaine Craig - Chapman University
Anne Newins - Merced College, Los Banos Campus
Helen Sullivan - University of California, Merced

LABOR ORGANIZATIONS

Richard Becker - Communications Workers of America
Charlie Lambert - Carpenters Local, Union #25
Judy Steinke - ASFCME Council 57

ONE-STOP PARTNERS

Andrea Baker - Merced County Private Industry Training Dept.
Nicolas Benjamin - Merced County Housing Authority
Bob Bittner - State of California, Employment Development Dept.
Harry Dull - Merced County Community Action Agency
Ben Duran - Merced Community College
Ernie Flores - Central Valley Opportunity Center
Grover Omyer - Merced County Human Services Agency
Carole Roberds - Merced Adult School
Dick Shipley - California State Department of Rehabilitation
James White - Merced County Office of Education

OTHER

Kathleen Crookham - Merced County Board of Supervisors


The Merced County

Workforce Investment Board

Merced County
Workforce Investment Board
1880 W. Wardrobe Avenue
Merced, CA 95340
Phone: (209) 385-7324
Fax: (209) 722-3592
Website: www.co.merced.ca.us

Why should you care about:

Workforce Investment?



In Merced County and beyond, we are witnessing a profound change in the way the world does business. New advances in technology continue to fuel our growing global market place and, now more than ever before, we must all work smarter to stay competitive.

Merced County's workforce investment system is an integrated network made up of many groups—businesses, current and future employees, organized labor, education and training institutions, community support organizations, and public employment services—who are dedicated to making our community stronger. This network is collaborating to anticipate and prepare for these significant workforce trends and realities.



How do we work for you?

The Merced County Workforce Investment Board, through our Worknet Career System, and affiliate sites offer a wealth of smart resources for anyone looking to stay ahead of the competition. Whether you are a large business or a first-time job seeker; an educator or community service organization, we are your one stop source for workforce solutions.

The services provided by the Worknet partnership helps:

- Employers recruit and train highly skilled employees, access cutting-edge labor market information, and find community resources and training services.
- Job seekers gain marketable skills, access employer networks and job search tools, and get hired.
- Our entire community to remain competitive in economic advancement and long-term prosperity.

Worknet provides services For job seekers...

We offer access to career opportunities through our extensive employer networks, job listing and resume posting services.

- Connections to career development services—on-the-job skills training, employment workshops, and job placement services.
- Access to comprehensive labor market and wage-rate data.
- Self-assessment tools to explore career interests.
- Valuable information for youth and entrepreneurs.
- Support services, including transportation and child care.
- A variety of other valuable resources.

For Businesses and Employers...

A highly skilled workforce is vital in maintaining our strong business base in Merced County and integral in attracting new high-growth, high-technology businesses to our area. That means a greater demand for our products and services, increased profits, a broader tax-base, and a stronger business voice in public policy.

The Board through Worknet offers businesses and employers the opportunity to post their open positions, search a resume bank of skilled candidates, and access extensive labor market information. Our resources and services include:

- Skilled candidates for your available jobs.
- Recruitment and placement assistance.
- Information on applying employer tax credits.
- Labor market data that is accurate and up-to-date.
- Incentives for providing on-the-job training to employees, including partial salary reimbursement.
- Referrals to community resources and training services.

Maximize your profitability by investing in your local workforce investment initiatives. We can help you hire—and retain—a skilled, high performance workforce that will keep your business competitive.

Your Source for Training

The Merced County Workforce Investment Board serves as your source for all training and development resources to ensure that Merced County remains a growing and prosperous community.