



A Merced County Labor Market Review

The QuickLook: Welcome to the Merced County labor market summary. The QuickLook has been developed by the Department of Workforce Investment staff for the Merced County Local Workforce Investment Board. The data and information is provided by the California Employment Development Department. Questions can be referred to the Department of Workforce Investment, 1880 W. Wardrobe Ave., Merced, CA 95340. Telephone (209) 724-2042. Email: pitd26@co.merced.ca.us

Merced County

Industry Employment & Labor Force March 2003 Benchmark

Data Not Adjusted for Seasonality

	May 03	Mar 04	Apr 04 Revised	May 04 Prelim.	PercentChange Month Year	
Civilian Labor Force (1)	88,100	93,500	91,700	92,000	0.3%	4.4%
Civilian Employment	75,200	76,400	77,400	79,500	2.7%	5.7%
Civilian Unemployment	12,800	17,100	14,200	12,500	(12.0%)	(2.3%)
Civilian Unemployment Rate	14.5%	18.3%	15.5%	13.6%		
(CA Unemployment Rate)	6.5%	6.7%	6.2%	5.8%		
(U.S. Unemployment Rate)	5.8%	6.0%	5.4%	5.3%		
Total, All Industries (2)	65,700	64,700	66,200	68,400	3.3%	4.1%
Total Farm	10,600	8,400	9,500	10,800	13.7%	1.9%
Total Nonfarm	55,100	56,300	56,700	57,600	1.6%	4.5%
Total Private	41,400	42,700	43,100	43,900	1.9%	6.0%
Goods Producing	13,400	14,200	14,400	14,800	2.8%	10.4%
Natural Resources, Mining and Construction	3,000	3,200	3,300	3,400	3.0%	13.3%
Manufacturing	10,400	11,100	11,100	11,400	2.7%	9.6%
Durable Goods	1,700	1,700	1,800	1,700	(5.6%)	0.0%
Nondurable Goods	8,700	9,300	9,300	9,700	4.3%	11.5%
Food Man & Beverage & Tobacco	7,000	7,400	7,500	7,900	5.3%	12.9%
Residual-Textile Mills	1,700	1,900	1,800	1,800	0.0%	5.9%
Service Providing	41,700	42,100	42,300	42,800	1.2%	2.6%
Trade, Transportation and Utilities	10,600	11,200	11,300	11,400	0.9%	7.5%
Wholesale Trade	1,400	1,700	1,700	1,700	0.0%	21.4%
Retail Trade	7,000	7,200	7,300	7,400	1.4%	5.7%
Food and Beverage Stores	1,500	1,500	1,500	1,600	6.7%	6.7%
General Merchandise Stores	1,500	1,600	1,700	1,700	0.0%	13.3%
Residual-Miscellaneous Store Retailers	4,000	4,100	4,100	4,100	0.0%	2.5%
Transportation, Warehousing and Utilities	2,200	2,300	2,300	2,300	0.0%	4.5%
Information	500	500	500	500	0.0%	0.0%
Financial Activities	1,700	1,600	1,600	1,600	0.0%	(5.9%)
Finance and Insurance	1,000	1,000	1,000	1,000	0.0%	0.0%
Real Estate and Rental and Leasing	700	600	600	600	0.0%	(14.3%)
Professional and Business Services	3,300	3,300	3,400	3,400	0.0%	3.0%
Educational and Health Services	5,500	5,600	5,500	5,500	0.0%	0.0%
Leisure and Hospitality	4,700	4,500	4,600	4,800	4.3%	2.1%
Food Services and Drinking Places	3,800	3,700	3,800	3,900	2.6%	2.6%
Residual-Arts, Entertainment, and Recreation	900	800	800	900	12.5%	0.0%
Other Services	1,700	1,800	1,800	1,900	5.6%	11.8%
Government	13,700	13,600	13,600	13,700	0.7%	0.0%
Federal Government	800	800	800	800	0.0%	0.0%
State and Local Government	12,900	12,800	12,800	12,900	0.8%	0.0%
State Government	600	600	600	600	0.0%	0.0%
Local Government	12,300	12,200	12,200	12,300	0.8%	0.0%

The QuickLook: The County continues with one of the highest unemployment rates in the State, ranking 54th out of 58 counties in the month of May. The preliminary result is a decrease of 1.9 percentage point in the unemployment rate from the revised April rate. This preliminary figure is a decrease of 0.9 percentage point in the unemployment rate of one year ago.

Overall, the County saw an increase of 2,200 jobs in May following a 1,500 job increase in April. The increase was a result of Total Farm with a 1,300 job gain. Total Nonfarm industries realized an increase of 900 jobs, from the Goods Producing industries (400 jobs in: Natural Resources, Mining and Construction; and Food Manufacturing, Durable Goods) and the Service Providing industries (500 jobs in: Food and Beverage Stores, Leisure and Hospitality, Food Services and Drinking Places, and Residual-Arts, Entertainment).

Merced County Current Labor Force and Industry Employment

The QuickLook At: California's unemployment rate was 6.2 percent in May, unchanged from the 6.2 percent announced in April, the state Employment Development Department (EDD) reported. A year ago, in May 2003, California's unemployment rate was 6.8 percent.

EDD's report on payroll employment (wage and salary jobs) in the nonfarm industries of California totaled 14,501,200 in May, a net gain of 23,600 jobs since the April survey. This followed a gain of 15,700 jobs (as revised) in April.

Nine of the categories (**construction; manufacturing; trade, transportation and utilities; information; financial activities; professional and business services; educational and health services; leisure and hospitality; and other services**) added jobs over the month, gaining 33,600 jobs. Two categories (**natural resources and mining and government**) reported job declines this month, down 10,000 jobs.

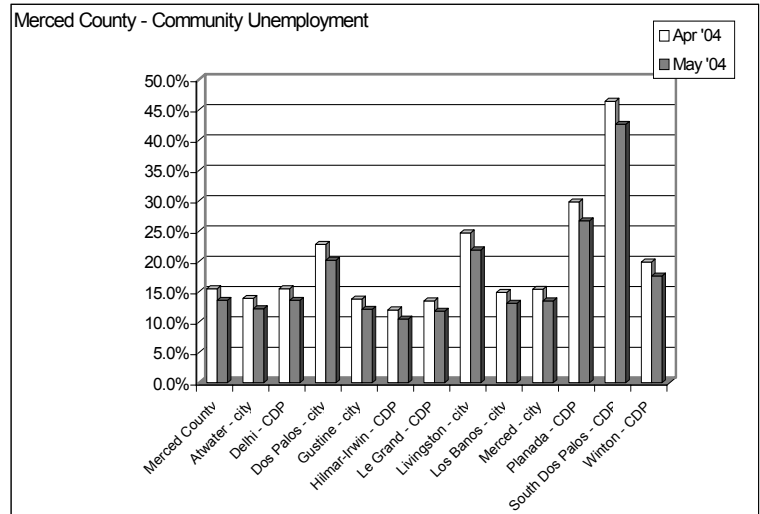
In a year-over-year comparison (May 2003 to May 2004), nonfarm payroll employment in California increased by 110,200 jobs (up 0.8 percent).

Seven industry divisions (**natural resources and mining; construction; trade, transportation and utilities; financial activities; professional and business services; educational and health services; and leisure and hospitality**) posted job gains over the year, adding 188,600 jobs. On a numerical basis, employment growth in professional and business services showed the strongest gain, up by 62,500 jobs (an increase of 3.0 percent). On a percentage basis, employment in construction recorded the strongest growth, up 3.5 percent (an increase of 27,500 jobs).

Four categories (**manufacturing; information; other services; and government**) posted job declines over the year, down 78,400 jobs. On a numerical basis, jobs in government showed the largest decline, down 46,700 (a decline of 1.9 percent), followed by manufacturing, down 21,800 (a 1.4 percent decline).

The QuickLook At: Sub County average unemployment rates for the county, cities and municipalities.

Area Name	Unemployment			
	Labor Force	Employment	Number	Rate
Merced County	92,000	79,500	12,250	13.6%
Atwater - city	10,810	9,500	1,310	12.2%
Delhi - CDP	1,680	1,450	230	13.6%
Dos Palos - city	2,090	1,670	420	20.2%
Gustine - city	2,040	1,790	250	12.1%
Hilmar-Irwin - CDP	1,890	1,690	200	10.5%
Le Grand - CDP	560	490	70	11.8%
Livingston - city	4,290	3,350	940	21.9%
Los Banos - city	7,830	6,810	1,020	13.1%
Merced - city	27,940	24,180	3,760	13.5%
Planada - CDP	1,880	1,380	500	26.7%
South Dos Palos - CDP	570	330	240	42.6%
Winton - CDP	3,670	3,020	650	17.6%



The QuickLook At The Seven Counties: Merced County's workforce has grown over the past 20 years reflecting improvement of the County's economic well being; however, unemployment remains a consistent barrier to greater prosperity. Average Unemployment has fluctuated from a yearly low of 11.1 percent in 1988 to a yearly high of 17.1 percent in 1995. Between the years 1983 to 2002 Merced County's average unemployment was 14.3 percent.

The county's unemployment rate is the fifth highest in the state. Merced County saw a decrease in unemployment at 1.9 percentage point below April's unemployment rate. All seven counties' unemployment rate decreased in month-over average unemployment (Merced, Fresno, Madera, San Benito, and Stanislaus, Mariposa and San Joaquin).

COUNTY	RANK	LABOR FORCE	EMPLOYMENT	UNEMPLOYMENT	RATE
MERCED	54	92,000	79,500	12,500	13.6%
MADERA	48	58,100	51,200	6,900	11.8%
MARIPOSA	25	6,960	6,550	410	5.9%
FRESNO	50	399,200	351,100	48,100	12.1%
SAN BENITO	40	28,610	26,060	2,550	8.9%
SAN JOAQUIN	41	284,200	258,600	25,600	9.0%
STANISLAUS	46	217,500	193,000	24,500	11.3%

