



The Quick Look

A Merced County Labor Market Review - May 2008

Welcome to the Merced County labor market review. The Quick Look has been developed by the Department of Workforce Investment staff for the Merced County Local Workforce Investment Board. The data and information is provided by the California Employment Development Department. Questions can be referred to the Department of Workforce Investment, 1880 West Wardrobe Avenue, Merced, CA 95340. Telephone (209) 724-2145. Email: pitd131@co.merced.ca.us or to EDD's Labor Market Information Division at (916) 262-2162.

Merced County Data not adjusted for Seasonality	Labor Force and Industrial Employment					
	March 2006 Benchmark				Percent Change	
	May 07	Mar 08	Apr 08	May 08	Month	Year
Civilian Labor Force	101,500	105,800	105,000	106,400	1.3%	4.8%
Civilian Employment	91,900	91,400	92,200	94,000	2.0%	2.3%
Civilian Unemployment	9,600	14,400	12,800	12,400	-3.1%	29.2%
Civilian Unemployment Rate	9.5%	13.6%	12.2%	11.7%		
(CA Unemployment Rate)	4.9%	6.5%	6.1%	6.5%		
(U.S. Unemployment Rate)	4.3%	5.2%	4.8%	5.2%		
Total, All Industries	71,000	69,500	70,700	72,700	2.8%	2.4%
Total Farm	11,400	10,200	11,000	12,500	13.6%	9.6%
Total Nonfarm	59,600	59,300	59,700	60,200	0.8%	1.0%
Total Private	43,900	43,300	43,600	44,000	0.9%	0.2%
Goods Producing	12,400	12,000	12,200	12,500	2.5%	0.8%
Natural Resources and Mining and Constuction	3,300	2,900	2,900	3,000	3.4%	-9.1%
Construction	3,300	2,900	2,900	3,000	3.4%	-9.1%
Manufacturing	9,100	9,100	9,300	9,500	2.2%	4.4%
Durable Goods	1,800	1,900	2,000	2,000	0.0%	11.1%
Nondurable Goods	7,300	7,200	7,300	7,500	2.7%	2.7%
Service Providing	47,200	47,300	47,500	47,700	0.4%	1.1%
Private Service Producing	31,500	31,300	31,400	31,500	0.3%	0.0%
Trade, Transportation and Utilities	11,900	11,800	11,800	11,900	0.8%	0.0%
Wholesale Trade	1,800	1,800	1,800	1,800	0.0%	0.0%
Retail Trade	7,800	7,900	7,900	8,000	1.3%	2.6%
Food and Beverage Stores	1,700	1,700	1,700	1,800	5.9%	5.9%
General Merchandise Stores	1,700	1,800	1,800	1,800	0.0%	5.9%
Residual - Miscellaneous Store Retailers	4,400	4,400	4,400	4,400	0.0%	0.0%
Transportation, Warehousing and Utilities	2,300	2,100	2,100	2,100	0.0%	-8.7%
Information	1,400	1,300	1,300	1,300	0.0%	-7.1%
Financial Activities	1,900	1,900	1,900	1,900	0.0%	0.0%
Finance and Insurance	1,200	1,200	1,200	1,200	0.0%	0.0%
Real Estate and Rental and Leasing	700	700	700	700	0.0%	0.0%
Professional and Business Services	4,100	4,300	4,300	4,300	0.0%	4.9%
Educational and Health Services	5,600	5,500	5,500	5,500	0.0%	-1.8%
Leisure and Hospitality	5,000	5,000	5,100	5,100	0.0%	2.0%
Food Services and Drinking Places	4,200	4,300	4,300	4,300	0.0%	2.4%
Residual - Arts, Entertainment, and Recreation	800	700	800	800	0.0%	0.0%
Other Services	1,600	1,500	1,500	1,500	0.0%	-6.3%
Government	15,700	16,000	16,100	16,200	0.6%	3.2%
Federal Government	800	800	800	800	0.0%	0.0%
State Government	1,600	1,800	1,800	1,800	0.0%	12.5%
Local Government	13,300	13,400	13,500	13,600	0.7%	2.3%

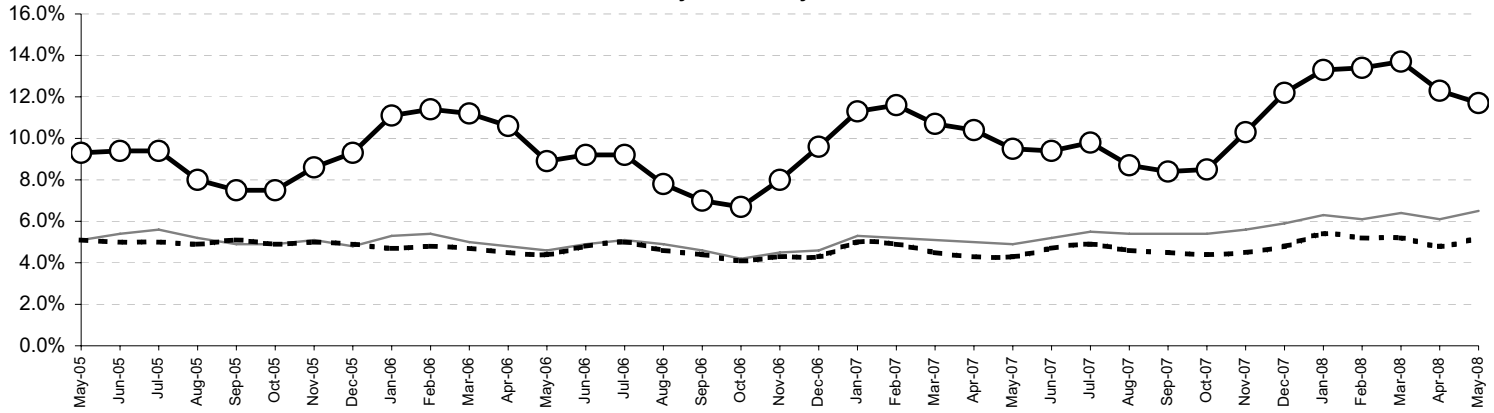
The County continues with one of the highest unemployment rates in the State, ranking 55th out of 58 counties in the month of May. The preliminary result is a decrease of 0.5 percentage points in the unemployment rate from the April rate. For year ago data, this preliminary figure is an increase of 2.2 percentage points in the unemployment rate.

Overall, the County's Civilian Labor Force increased by 1400 persons over last month's figure and an increase of 4,900 persons over year ago figure. Industrial employment increased by 2000 jobs in May over April's figure and an increase of 1,700 jobs over year ago's figures.

The Quick Look

May 2008

Merced County, California, and the United States
Unemployment Rate
May 2005 to May 2008

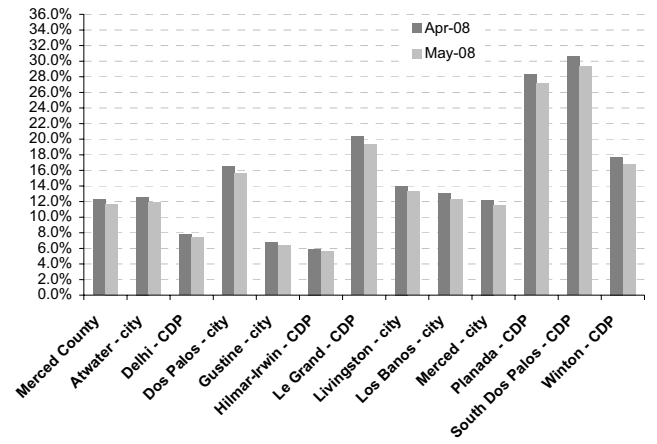


Sub County average unemployment rates for the county, cities, and municipalities.

Area Name	Labor Force	Employment	Unemployment	
			Number	Rate
Merced County	106,400	94,000	12,400	11.7%
Atwater city	12,500	11,000	1,500	11.9%
Delhi CDP	4,100	3,800	300	7.4%
Dos Palos city	2,000	1,700	300	15.6%
Gustine city	2,600	2,400	200	6.4%
Hilmar Irwin CDP	2,900	2,700	200	5.6%
Le Grand CDP	700	600	100	19.3%
Livingston city	5,200	4,500	700	13.3%
Los Banos city	13,200	11,600	1,600	12.3%
Merced city	31,500	27,900	3,600	11.5%
Planada CDP	1,800	1,300	500	27.1%
South Dos Palos CDP	400	300	100	29.3%
Winton CDP	4,000	3,300	700	16.8%

CDP - Census Designated Place

Merced County - Community Unemployment



Merced County's workforce has grown over the past 16 years reflecting improvement of the County's economic well being; however, unemployment remains a consistent barrier to greater prosperity. Average unemployment has fluctuated from an annual low of 9.3 percent to an annual high of 17.5 percent.

Counties in the San Joaquin Valley Quick Look

County	Rank	Labor Force	Employ	Unemployed	Rate
Merced	55	106,400	94,000	12,400	11.7%
Fresno	49	440,700	398,200	42,500	9.7%
Kern	45	356,700	322,900	33,800	9.5%
Kings	45	60,000	54,300	5,700	9.5%
Madera	41	65,500	59,500	6,000	9.1%
San Joaquin	45	306,100	277,100	29,000	9.5%
Stanislaus	51	236,000	210,600	25,400	10.8%
Tulare	45	202,100	182,900	19,200	9.5%
San Joaquin Valley		1,773,500	1,599,500	174,000	9.8%

Counties in the San Joaquin Valley
Unemployment Rates

