



The Quick Look

A Merced County Labor Market Review - June 2007

Welcome to the Merced County labor market review. The Quick Look has been developed by the Department of Workforce Investment staff for the Merced County Local Workforce Investment Board. The data and information is provided by the California Employment Development Department. Questions can be referred to the Department of Workforce Investment, 1880 West Wardrobe Avenue, Merced, CA 95340. Telephone (209) 724-2042. Email: pitd26@co.merced.ca.us or to EDD's Labor Market Information Division at (916) 262-2162.

| Merced County Data not adjusted for Seasonality | Labor Force and Industrial Employment | | | | | |
|--|---------------------------------------|---------|---------|---------|----------------|--------|
| | March 2006 Benchmark | | | | Percent Change | |
| | Jun 06 | Apr 07 | May 07 | Jun 07 | Month | Year |
| Civilian Labor Force | 101,600 | 102,300 | 102,100 | 103,400 | 1.3% | 1.8% |
| Civilian Employment | 92,400 | 91,700 | 92,400 | 93,600 | 1.3% | 1.3% |
| Civilian Unemployment | 9,200 | 10,600 | 9,700 | 9,800 | 1.0% | 6.5% |
| Civilian Unemployment Rate | 9.0% | 10.4% | 9.5% | 9.4% | | |
| (CA Unemployment Rate) | 4.9% | 5.0% | 4.9% | 5.2% | | |
| (U.S. Unemployment Rate) | 4.8% | 4.3% | 4.3% | 4.7% | | |
| Total, All Industries | 72,400 | 70,100 | 72,100 | 73,200 | 1.5% | 1.1% |
| Total Farm | 12,700 | 10,200 | 11,600 | 12,500 | 7.8% | -1.6% |
| Total Nonfarm | 59,700 | 69,900 | 60,500 | 60,700 | 0.3% | 1.7% |
| Total Private | 44,200 | 44,500 | 44,800 | 44,700 | -0.2% | 1.1% |
| Goods Producing | 14,000 | 13,600 | 13,700 | 13,900 | 1.5% | -0.7% |
| Natural Resources and Mining and Constuction | 3,800 | 3,400 | 3,300 | 3,300 | 0.0% | -13.2% |
| Construction | 3,800 | 3,400 | 3,300 | 3,300 | 0.0% | -13.2% |
| Manufacturing | 10,200 | 10,200 | 10,400 | 10,600 | 1.9% | 3.9% |
| Durable Goods | 1,900 | 2,000 | 2,000 | 2,000 | 0.0% | 5.3% |
| Nondurable Goods | 8,300 | 8,200 | 8,400 | 8,600 | 2.4% | 3.6% |
| Service Providing | 45,700 | 46,300 | 46,800 | 46,800 | 0.0% | 2.4% |
| Private Service Producing | 30,200 | 30,900 | 31,100 | 30,800 | -1.0% | 2.0% |
| Trade, Transportation and Utilities | 11,100 | 11,100 | 11,100 | 10,900 | -1.8% | -1.8% |
| Wholesale Trade | 1,500 | 1,700 | 1,700 | 1,700 | 0.0% | 13.3% |
| Retail Trade | 7,500 | 7,300 | 7,300 | 7,100 | -2.7% | -5.3% |
| Food and Beverage Stores | 1,500 | 1,500 | 1,500 | 1,500 | 0.0% | 0.0% |
| General Merchandise Stores | 1,700 | 1,700 | 1,700 | 1,600 | -5.9% | -5.9% |
| Residual - Miscellaneous Store Retailers | 4,300 | 4,100 | 4,100 | 4,000 | -2.4% | -7.0% |
| Transportation, Warehousing and Utilities | 2,100 | 2,100 | 2,100 | 2,100 | 0.0% | 0.0% |
| Information | 1,400 | 1,400 | 1,400 | 1,400 | 0.0% | 0.0% |
| Financial Activities | 1,900 | 2,000 | 2,100 | 2,100 | 0.0% | 10.5% |
| Finance and Insurance | 1,200 | 1,200 | 1,300 | 1,300 | 0.0% | 8.3% |
| Real Estate and Rental and Leasing | 700 | 800 | 800 | 800 | 0.0% | 14.3% |
| Professional and Business Services | 4,000 | 3,900 | 3,900 | 3,900 | 0.0% | -2.5% |
| Educational and Health Services | 5,300 | 5,900 | 5,900 | 5,900 | 0.0% | 11.3% |
| Leisure and Hospitality | 5,000 | 5,000 | 5,100 | 5,000 | -2.0% | 0.0% |
| Food Services and Drinking Places | 4,200 | 4,200 | 4,300 | 4,300 | 0.0% | 2.4% |
| Residual - Arts, Entertainment, and Recreation | 800 | 800 | 800 | 700 | -12.5% | -12.5% |
| Other Services | 1,500 | 1,600 | 1,600 | 1,600 | 0.0% | 6.7% |
| Government | 15,500 | 15,400 | 15,700 | 16,000 | 1.9% | 3.2% |
| Federal Government | 700 | 800 | 800 | 800 | 0.0% | 14.3% |
| State Government | 1,400 | 1,600 | 1,600 | 1,800 | 12.5% | 28.6% |
| Local Government | 13,400 | 13,000 | 13,300 | 13,400 | 0.8% | 0.0% |

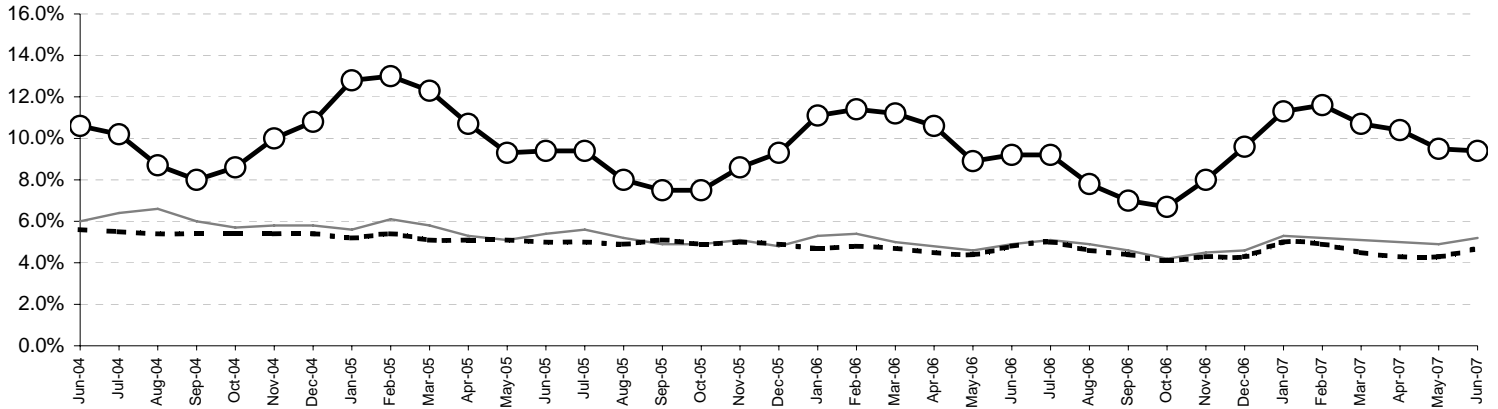
The County continues with one of the highest unemployment rates in the State, ranking 54rd out of 58 counties in the month of June. The preliminary result is a decrease of 0.1 percentage point in the unemployment rate from the May rate. For year ago data, this preliminary figure is an increase of 0.4 percentage point in the unemployment rate.

Overall, the County's Civilian Labor Force increased by 1,300 persons over last month's figure and an increase of 1,800 persons over year ago figure. Industrial employment increased by 1,100 jobs in June over May's figure and increased by 800 jobs over year ago figures.

The Quick Look

Jun 2007

**Merced County, California, and the United States
Unemployment Rate
June 2004 to June 2007**

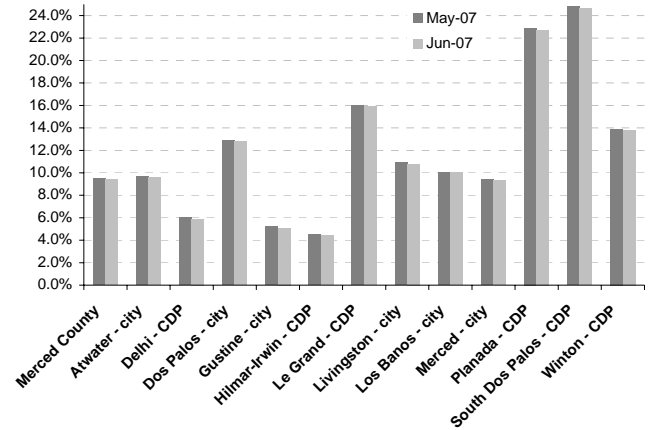


Sub County average unemployment rates for the county, cities, and municipalities.

| Area Name | Labor Force | Employment | Unemployment | |
|---------------------|-------------|------------|--------------|-------|
| | | | Number | Rate |
| Merced County | 103,400 | 93,600 | 9,800 | 9.4% |
| Atwater City | 12,100 | 10,900 | 1,200 | 9.6% |
| Delhi CDP | 4,000 | 3,800 | 200 | 5.9% |
| Dos Palos City | 1,900 | 1,700 | 200 | 12.8% |
| Gustine City | 2,500 | 2,400 | 100 | 5.1% |
| Hilmar-Irwin CDP | 2,800 | 2,700 | 100 | 4.4% |
| Le Grand CDP | 700 | 600 | 100 | 15.9% |
| Livingston City | 5,000 | 4,500 | 500 | 10.8% |
| Los Banos City | 12,900 | 11,600 | 1,300 | 10.0% |
| Merced City | 30,700 | 27,800 | 2,900 | 9.3% |
| Planada CDP | 1,700 | 1,300 | 400 | 22.7% |
| South Dos Palos CDP | 400 | 300 | 100 | 24.6% |
| Winton CDP | 3,800 | 3,300 | 500 | 13.8% |

CDP - Census Designated Place

Merced County - Community Unemployment

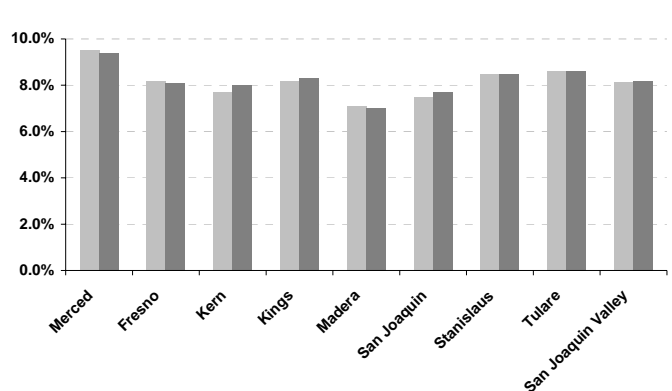


Merced County's workforce has grown over the past 16 years reflecting improvement of the County's economic well being; however, unemployment remains a consistent barrier to greater prosperity. Average unemployment has fluctuated from an annual low of 9.3 percent to an annual high of 17.5 percent.

Counties in the San Joaquin Valley Quick Look

| County | Rank | Labor Force | Employ | Unemployed | Rate |
|--------------------|------|-------------|-----------|------------|------|
| Merced | 54 | 103,400 | 93,600 | 9,800 | 9.4% |
| Fresno | 47 | 424,700 | 390,100 | 34,600 | 8.1% |
| Kern | 46 | 350,600 | 322,600 | 28,000 | 8.0% |
| Kings | 48 | 59,000 | 54,100 | 4,900 | 8.3% |
| Madera | 39 | 65,900 | 61,300 | 4,600 | 7.0% |
| San Joaquin | 45 | 295,900 | 273,100 | 22,800 | 7.7% |
| Stanislaus | 49 | 231,100 | 211,400 | 19,700 | 8.5% |
| Tulare | 50 | 196,600 | 179,700 | 16,900 | 8.6% |
| San Joaquin Valley | | 1,727,200 | 1,585,900 | 141,300 | 8.2% |

**Counties in the San Joaquin Valley
Unemployment Rates**





The Quick Look

A Merced County Labor Market Review - July 2007

Welcome to the Merced County labor market review. The Quick Look has been developed by the Department of Workforce Investment staff for the Merced County Local Workforce Investment Board. The data and information is provided by the California Employment Development Department. Questions can be referred to the Department of Workforce Investment, 1880 West Wardrobe Avenue, Merced, CA 95340. Telephone (209) 724-2042. Email: pitd26@co.merced.ca.us or to EDD's Labor Market Information Division at (916) 262-2162.

| Merced County Data not adjusted for Seasonality | Labor Force and Industrial Employment | | | | | |
|--|---------------------------------------|---------|---------|---------|----------------|--------|
| | March 2006 Benchmark | | | | Percent Change | |
| | Jul 06 | May 07 | Jun 07 | Jul 07 | Month | Year |
| Civilian Labor Force | 99,600 | 102,100 | 103,400 | 100,900 | -2.4% | 1.3% |
| Civilian Employment | 90,300 | 92,400 | 93,600 | 91,100 | -2.8% | 0.8% |
| Civilian Unemployment | 9,300 | 9,700 | 9,800 | 9,900 | 1.0% | 6.5% |
| Civilian Unemployment Rate | 9.3% | 9.5% | 9.4% | 9.8% | | |
| (CA Unemployment Rate) | 5.3% | 4.9% | 5.2% | 5.5% | | |
| (U.S. Unemployment Rate) | 5.0% | 4.3% | 4.7% | 4.9% | | |
| Total, All Industries | 69,000 | 72,100 | 73,300 | 70,200 | -4.2% | 1.7% |
| Total Farm | 12,800 | 11,600 | 12,500 | 12,800 | 2.4% | 0.0% |
| Total Nonfarm | 56,200 | 60,500 | 60,800 | 57,400 | -5.6% | 2.1% |
| Total Private | 43,900 | 44,800 | 44,900 | 44,700 | -0.4% | 1.8% |
| Goods Producing | 13,700 | 13,700 | 13,900 | 13,900 | 0.0% | 1.5% |
| Natural Resources and Mining and Constuction | 3,600 | 3,300 | 3,400 | 3,400 | 0.0% | -5.6% |
| Construction | 3,600 | 3,300 | 3,400 | 3,400 | 0.0% | -5.6% |
| Manufacturing | 10,100 | 10,400 | 10,500 | 10,500 | 0.0% | 4.0% |
| Durable Goods | 1,900 | 2,000 | 2,000 | 1,900 | -5.0% | 0.0% |
| Nondurable Goods | 8,200 | 8,400 | 8,500 | 8,600 | 1.2% | 4.9% |
| Service Providing | 42,500 | 46,800 | 46,900 | 43,500 | -7.2% | 2.4% |
| Private Service Producing | 30,200 | 31,100 | 31,000 | 30,800 | -0.6% | 2.0% |
| Trade, Transportation and Utilities | 11,100 | 11,100 | 11,000 | 11,100 | 0.9% | 0.0% |
| Wholesale Trade | 1,700 | 1,700 | 1,700 | 1,700 | 0.0% | 0.0% |
| Retail Trade | 7,300 | 7,300 | 7,200 | 7,200 | 0.0% | -1.4% |
| Food and Beverage Stores | 1,500 | 1,500 | 1,500 | 1,500 | 0.0% | 0.0% |
| General Merchandise Stores | 1,700 | 1,700 | 1,700 | 1,600 | -5.9% | -5.9% |
| Residual - Miscellaneous Store Retailers | 4,100 | 4,100 | 4,000 | 4,100 | 2.5% | 0.0% |
| Transportation, Warehousing and Utilities | 2,100 | 2,100 | 2,100 | 2,200 | 4.8% | 4.8% |
| Information | 1,500 | 1,400 | 1,400 | 1,400 | 0.0% | -6.7% |
| Financial Activities | 1,900 | 2,100 | 2,100 | 2,100 | 0.0% | 10.5% |
| Finance and Insurance | 1,200 | 1,300 | 1,300 | 1,300 | 0.0% | 8.3% |
| Real Estate and Rental and Leasing | 700 | 800 | 800 | 800 | 0.0% | 14.3% |
| Professional and Business Services | 3,800 | 3,900 | 4,000 | 3,900 | -2.5% | 2.6% |
| Educational and Health Services | 5,500 | 5,900 | 5,900 | 5,900 | 0.0% | 7.3% |
| Leisure and Hospitality | 4,900 | 5,100 | 5,000 | 4,900 | -2.0% | 0.0% |
| Food Services and Drinking Places | 4,100 | 4,300 | 4,300 | 4,200 | -2.3% | 2.4% |
| Residual - Arts, Entertainment, and Recreation | 800 | 800 | 700 | 700 | 0.0% | -12.5% |
| Other Services | 1,500 | 1,600 | 1,600 | 1,500 | -6.3% | 0.0% |
| Government | 12,300 | 15,700 | 15,900 | 12,700 | -20.1% | 3.3% |
| Federal Government | 700 | 800 | 800 | 800 | 0.0% | 14.3% |
| State Government | 1,400 | 1,600 | 1,700 | 1,700 | 0.0% | 21.4% |
| Local Government | 10,200 | 13,300 | 13,400 | 10,200 | -23.9% | 0.0% |

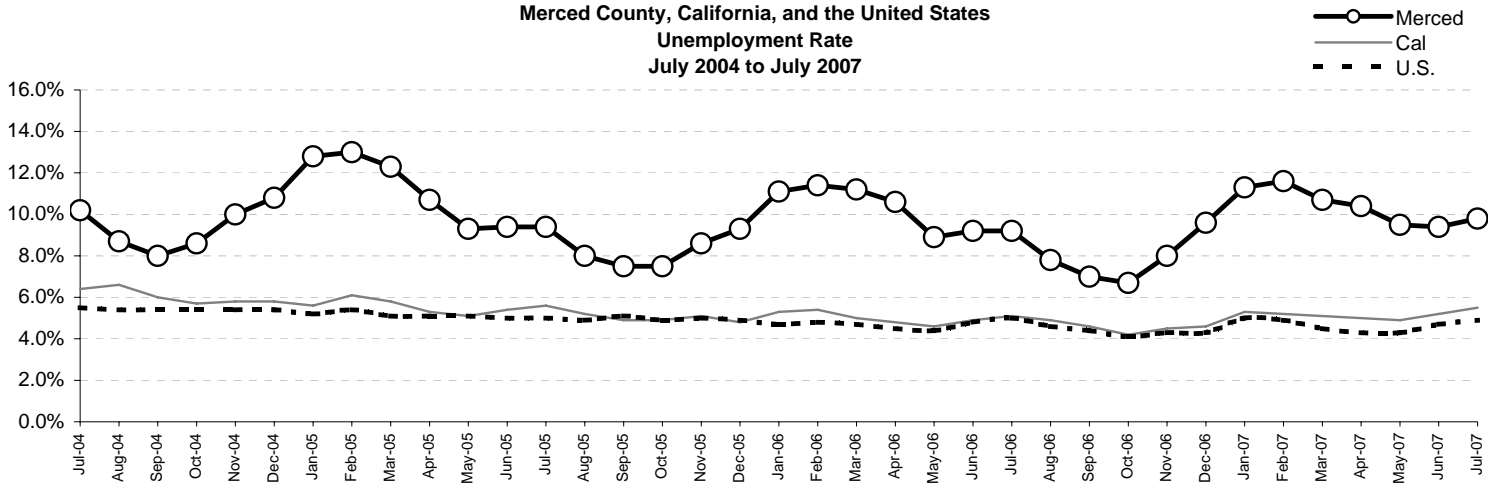
The County continues with one of the highest unemployment rates in the State, ranking 57th out of 58 counties in the month of July. The preliminary result is an increase of 0.4 percentage point in the unemployment rate from the June rate. For year ago data, this preliminary figure is an increase of 0.5 percentage point in the unemployment rate.

Overall, the County's Civilian Labor Force decreased by 2,500 persons over last month's figure and an increase of 1,300 persons over year ago figure. Industrial employment decreased by 3,100 jobs in July over June's figure and increased by 1,200 jobs over year ago figures.

The Quick Look

Jul 2007

**Merced County, California, and the United States
Unemployment Rate
July 2004 to July 2007**

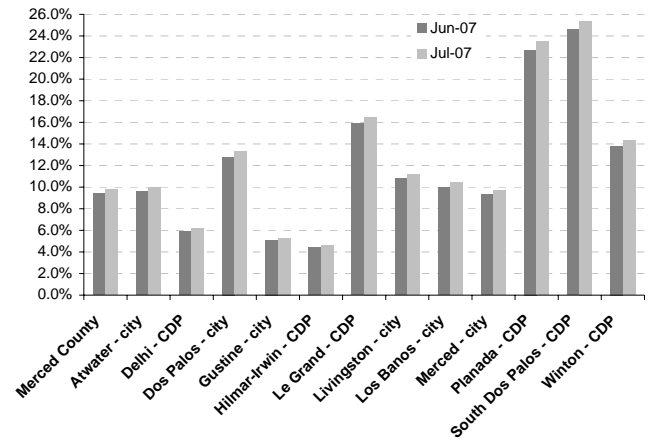


Sub County average unemployment rates for the county, cities, and municipalities.

| Area Name | Labor Force | Employment | Unemployment | |
|---------------------|-------------|------------|--------------|-------|
| | | | Number | Rate |
| Merced County | 100,900 | 91,000 | 9,900 | 9.8% |
| Atwater City | 11,800 | 10,600 | 1,200 | 10.0% |
| Delhi CDP | 3,900 | 3,700 | 200 | 6.2% |
| Dos Palos City | 2,000 | 1,700 | 300 | 13.3% |
| Gustine City | 2,400 | 2,300 | 100 | 5.3% |
| Hilmar-Irwin CDP | 2,700 | 2,600 | 100 | 4.6% |
| Le Grand CDP | 700 | 600 | 100 | 16.5% |
| Livingston City | 5,000 | 4,400 | 600 | 11.2% |
| Los Banos City | 12,600 | 11,300 | 1,300 | 10.4% |
| Merced City | 29,900 | 27,000 | 2,900 | 9.7% |
| Planada CDP | 1,700 | 1,300 | 400 | 23.5% |
| South Dos Palos CDP | 400 | 300 | 100 | 25.4% |
| Winton CDP | 3,700 | 3,200 | 500 | 14.3% |

CDP - Census Designated Place

Merced County - Community Unemployment



Merced County's workforce has grown over the past 16 years reflecting improvement of the County's economic well being; however, unemployment remains a consistent barrier to greater prosperity. Average unemployment has fluctuated from an annual low of 9.3 percent to an annual high of 17.5 percent.

Counties in the San Joaquin Valley Quick Look

| County | Rank | Labor Force | Employ | Unemployed | Rate |
|--------------------|------|-------------|-----------|------------|------|
| Merced | 57 | 100,900 | 91,000 | 9,900 | 9.8% |
| Fresno | 47 | 427,000 | 392,000 | 35,000 | 8.2% |
| Kern | 45 | 352,100 | 324,300 | 27,800 | 7.9% |
| Kings | 46 | 58,900 | 54,200 | 4,700 | 8.0% |
| Madera | 38 | 66,100 | 61,300 | 4,800 | 7.3% |
| San Joaquin | 48 | 290,400 | 266,200 | 24,200 | 8.3% |
| Stanislaus | 49 | 233,300 | 213,100 | 20,200 | 8.7% |
| Tulare | 51 | 193,500 | 176,300 | 17,200 | 8.9% |
| San Joaquin Valley | | 1,722,200 | 1,578,400 | 143,800 | 8.3% |

**Counties in the San Joaquin Valley
Unemployment Rates**

