



# The Quick Look

## A Merced County Labor Market Review - July 2008

Welcome to the Merced County labor market review. The Quick Look has been developed by the Department of Workforce Investment staff for the Merced County Local Workforce Investment Board. The data and information is provided by the California Employment Development Department. Questions can be referred to the Department of Workforce Investment, 1880 West Wardrobe Avenue, Merced, CA 95340. Telephone (209) 724-2145. Email: [pitd131@co.merced.ca.us](mailto:pitd131@co.merced.ca.us) or to EDD's Labor Market Information Division at (916) 262-2162.

Merced County Data not adjusted for Seasonality	Labor Force and Industrial Employment					
	March 2006 Benchmark				Percent Change	
	Jul 07	May 08	Jun 08	Jul 08	Month	Year
Civilian Labor Force	101,900	106,200	107,800	106,300	-1.4%	4.3%
Civilian Employment	91,800	93,900	95,100	93,500	-1.7%	1.9%
Civilian Unemployment	10,100	12,300	12,700	12,800	0.8%	26.7%
Civilian Unemployment Rate	9.9%	11.6%	11.8%	12.1%		
(CA Unemployment Rate)	5.7%	6.5%	7.0%	7.6%		
(U.S. Unemployment Rate)	4.9%	5.2%	5.7%	6.0%		
Total, All Industries	70,500	72,700	74,100	72,300	-2.4%	2.6%
Total Farm	12,400	12,500	13,500	13,500	0.0%	8.9%
Total Nonfarm	58,100	60,200	60,600	58,800	-3.0%	1.2%
Total Private	44,500	43,900	44,200	44,800	1.4%	0.7%
Goods Producing	13,200	12,500	12,700	13,300	4.7%	0.8%
Natural Resources and Mining and Constuction	3,400	3,000	3,000	3,100	3.3%	-8.8%
Construction	3,400	3,000	3,000	3,100	3.3%	-8.8%
Manufacturing	9,800	9,500	9,700	10,200	5.2%	4.1%
Durable Goods	1,800	2,000	2,000	2,000	0.0%	11.1%
Nondurable Goods	8,000	7,500	7,700	8,200	6.5%	2.5%
Service Providing	44,900	47,700	47,900	45,500	-5.0%	1.3%
Private Service Producing	31,300	31,400	31,500	31,500	0.0%	0.6%
Trade, Transportation and Utilities	11,800	11,800	11,900	12,000	0.8%	1.7%
Wholesale Trade	1,800	1,800	1,900	2,000	5.3%	11.1%
Retail Trade	7,700	7,900	7,900	7,900	0.0%	2.6%
Food and Beverage Stores	1,700	1,700	1,700	1,700	0.0%	0.0%
General Merchandise Stores	1,700	1,800	1,800	1,800	0.0%	5.9%
Residual - Miscellaneous Store Retailers	4,300	4,400	4,400	4,400	0.0%	2.3%
Transportation, Warehousing and Utilities	2,300	2,100	2,100	2,100	0.0%	-8.7%
Information	1,300	1,300	1,300	1,300	0.0%	0.0%
Financial Activities	1,900	1,900	1,900	1,900	0.0%	0.0%
Finance and Insurance	1,200	1,200	1,200	1,200	0.0%	0.0%
Real Estate and Rental and Leasing	700	700	700	700	0.0%	0.0%
Professional and Business Services	4,200	4,300	4,300	4,300	0.0%	2.4%
Educational and Health Services	5,600	5,500	5,500	5,500	0.0%	-1.8%
Leisure and Hospitality	5,000	5,100	5,100	5,000	-2.0%	0.0%
Food Services and Drinking Places	4,200	4,300	4,300	4,200	-2.3%	0.0%
Residual - Arts, Entertainment, and Recreation	800	800	800	800	0.0%	0.0%
Other Services	1,500	1,500	1,500	1,500	0.0%	0.0%
Government	13,600	16,300	16,400	14,000	-14.6%	2.9%
Federal Government	800	800	800	800	0.0%	0.0%
State Government	1,700	1,800	1,800	1,800	0.0%	5.9%
Local Government	11,100	13,700	13,800	11,400	-17.4%	2.7%

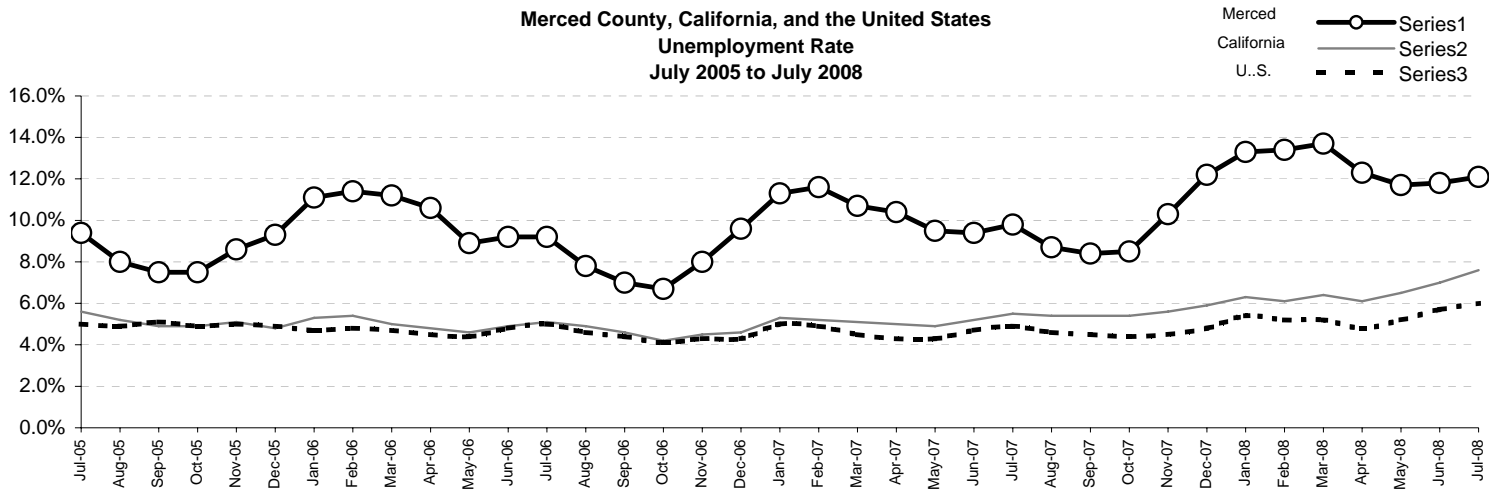
The County continues with one of the highest unemployment rates in the State, ranking 55th out of 58 counties in the month of July. The preliminary result is an increase of 0.3 percentage points in the unemployment rate from the May rate. For year ago data, this preliminary figure is an increase of 2.2 percentage points in the unemployment rate.

Overall, the County's Civilian Labor Force decreased by 1,500 persons over last month's figure and an increase of 4,400 persons over year ago figure. Industrial employment decreased by 1,800 jobs in June over May's figure and an increase of 1,800 jobs over year ago's figures.

## The Quick Look

Jun 2008

Merced County, California, and the United States  
Unemployment Rate  
July 2005 to July 2008

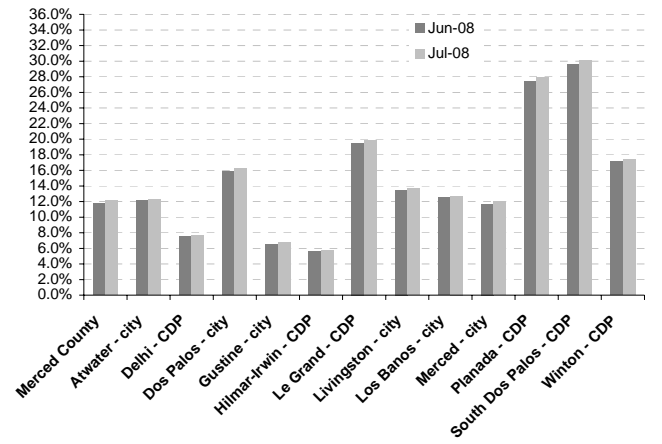


### Sub County average unemployment rates for the county, cities, and municipalities.

Area Name	Labor Force	Employment	Unemployment	
			Number	Rate
Merced County	106,300	93,500	12,800	12.1%
Atwater city	12,400	10,900	1,500	12.3%
Delhi CDP	4,100	3,800	300	7.7%
Dos Palos city	2,000	1,700	300	16.2%
Gustine city	2,600	2,400	200	6.7%
Hilmar Irwin CDP	2,900	2,700	200	5.8%
Le Grand CDP	700	600	100	19.9%
Livingston city	5,200	4,500	700	13.7%
Los Banos city	13,300	11,600	1,700	12.7%
Merced city	31,500	27,700	3,800	12.0%
Planada CDP	1,800	1,300	500	27.9%
South Dos Palos CDP	400	300	100	30.1%
Winton CDP	4,000	3,300	700	17.4%

CDP - Census Designated Place

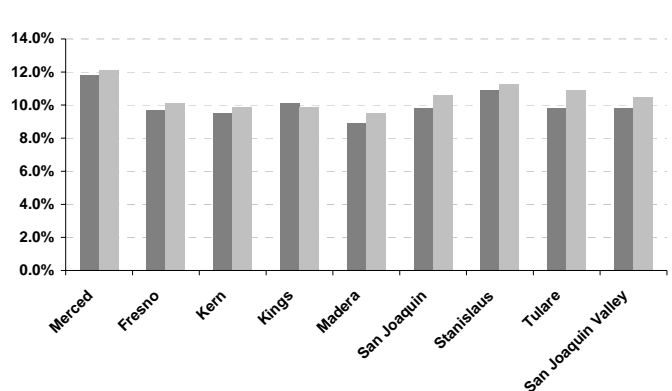
Merced County - Community Unemployment



### Counties in the San Joaquin Valley Quick Look

County	Rank	Labor Force	Employ	Unemployed	Rate
Merced	55	106,300	93,500	12,800	12.1%
Fresno	46	445,400	400,400	45,000	10.1%
Kern	43	368,700	332,100	36,600	9.9%
Kings	43	61,700	55,600	6,100	9.9%
Madera	41	66,700	60,400	6,300	9.5%
San Joaquin	49	302,500	270,500	32,000	10.6%
Stanislaus	53	239,600	212,400	27,200	11.3%
Tulare	51	200,300	178,400	21,900	10.9%
San Joaquin Valley		1,791,200	1,603,300	187,900	10.5%

Counties in the San Joaquin Valley  
Unemployment Rates



**MONTHLY CIVILIAN LABOR FORCE DATA FOR COUNTIES**  
**July 2008, and June 2008 and July 2007 (Revised); Not Seasonally Adjusted**  
**2007 Benchmark**

AREA / COUNTY	RANK	LABOR FORCE	EMPLOYMENT	UNEMPLOYMENT	RATE (%)	Jun 2008	Jul 2007
						Month-Ago	Year-Ago
<b>CALIFORNIA</b>	<b>--</b>	<b>18,555,800</b>	<b>17,146,800</b>	<b>1,409,000</b>	<b>7.6%</b>	<b>7.0%</b>	<b>5.7%</b>
ALAMEDA	14	765,100	713,800	51,300	6.7%	6.2%	5.2%
ALPINE	55	490	430	60	12.1%	12.6%	10.6%
AMADOR	28	18,970	17,490	1,480	7.8%	7.4%	5.9%
BUTTE	36	107,100	97,600	9,500	8.9%	8.2%	7.2%
CALAVERAS	32	21,710	19,850	1,860	8.6%	8.0%	6.7%
COLUSA	48	11,250	10,070	1,180	10.5%	11.0%	8.4%
CONTRA COSTA	14	532,900	497,300	35,600	6.7%	6.3%	5.1%
DEL NORTE	37	11,600	10,540	1,060	9.1%	8.5%	7.8%
EL DORADO	17	96,000	89,500	6,500	6.8%	6.6%	5.2%
FRESNO	46	445,400	400,400	45,000	10.1%	9.7%	8.3%
GLENN	50	13,050	11,640	1,410	10.8%	9.8%	9.7%
HUMBOLDT	23	60,800	56,300	4,500	7.3%	6.8%	5.9%
IMPERIAL	58	72,700	55,800	16,900	23.3%	22.5%	20.7%
INYO	21	9,320	8,670	650	7.0%	6.4%	5.2%
KERN	43	368,700	332,100	36,600	9.9%	9.5%	8.1%
KINGS	43	61,700	55,600	6,100	9.9%	10.1%	8.1%
LAKE	47	26,370	23,680	2,690	10.2%	9.5%	8.3%
LASSEN	35	13,360	12,180	1,180	8.8%	8.4%	7.5%
LOS ANGELES	30	4,995,200	4,592,900	402,300	8.1%	7.1%	5.6%
MADERA	41	66,700	60,400	6,300	9.5%	8.9%	7.5%
MARIN	1	140,300	133,300	7,000	5.0%	4.6%	3.9%
MARIPOSA	12	10,450	9,770	680	6.5%	6.4%	5.1%
MENDOCINO	13	44,970	41,990	2,980	6.6%	6.4%	5.4%
MERCED	55	106,300	93,500	12,800	12.1%	11.8%	9.9%
MODOC	34	4,020	3,670	350	8.7%	8.5%	7.4%
MONO	23	7,650	7,090	560	7.3%	7.9%	5.5%
MONTEREY	17	221,400	206,400	15,000	6.8%	6.6%	5.5%
NAPA	3	76,500	72,600	3,900	5.2%	4.9%	4.0%
NEVADA	20	51,780	48,220	3,560	6.9%	6.7%	5.0%
ORANGE	5	1,647,400	1,553,900	93,500	5.7%	5.3%	4.3%
PLACER	17	177,900	165,800	12,100	6.8%	6.4%	5.1%
PLUMAS	27	11,590	10,700	890	7.6%	7.5%	6.8%
RIVERSIDE	40	926,500	840,100	86,400	9.3%	8.4%	6.8%
SACRAMENTO	26	705,100	652,500	52,600	7.5%	7.0%	5.8%
SAN BENITO	32	25,700	23,500	2,200	8.6%	8.9%	6.1%
SAN BERNARDINO	31	897,700	821,800	75,900	8.5%	7.9%	6.2%
SAN DIEGO	9	1,577,300	1,476,300	101,000	6.4%	6.0%	4.9%
SAN FRANCISCO	6	447,100	421,400	25,700	5.8%	5.4%	4.7%
SAN JOAQUIN	49	302,500	270,500	32,000	10.6%	9.8%	8.4%
SAN LUIS OBISPO	8	139,100	130,500	8,600	6.2%	5.7%	4.7%
SAN MATEO	2	390,900	371,000	19,900	5.1%	4.7%	4.1%
SANTA BARBARA	4	222,700	210,500	12,200	5.5%	5.1%	4.4%
SANTA CLARA	9	878,400	822,300	56,100	6.4%	6.0%	5.1%
SANTA CRUZ	9	155,000	145,100	9,900	6.4%	6.1%	5.2%
SHASTA	43	86,200	77,700	8,500	9.9%	9.2%	7.5%
SIERRA	39	1,690	1,530	160	9.2%	8.6%	6.7%
SISKIYOU	37	20,070	18,250	1,820	9.1%	8.6%	7.7%
SOLANO	23	215,100	199,400	15,700	7.3%	6.9%	5.7%
SONOMA	7	267,900	251,700	16,200	6.1%	5.6%	4.7%
STANISLAUS	53	239,600	212,400	27,200	11.3%	10.9%	8.8%
SUTTER	54	42,600	37,600	5,000	11.8%	11.9%	8.8%
TEHAMA	42	25,740	23,270	2,470	9.6%	8.8%	7.7%
TRINITY	52	5,400	4,800	600	11.1%	10.8%	9.0%
TULARE	51	200,300	178,400	21,900	10.9%	9.8%	8.9%
TUOLUMNE	28	26,950	24,840	2,110	7.8%	7.3%	6.2%
VENTURA	14	431,900	402,900	29,000	6.7%	6.1%	5.3%
YOLO	22	97,900	90,900	7,000	7.1%	6.9%	5.6%
YUBA	57	28,100	24,700	3,400	12.2%	11.6%	9.5%

**NOTE:** Unemployment rates are calculated from unrounded labor force and unemployment level data.

**NOTE:** The 'RANK' assigned to each county is a whole number based on the ascending order of unemployment rates for the current month (e.g., the county with the lowest unemployment rate is assigned a 'RANK' of 1; conversely, the county with the highest rate is assigned a 'RANK' of 58).

SOURCE: EDD, Labor Market Information Division, Current Economic Statistics Group.