



The Quick Look

A Merced County Labor Market Review - August 2004

Welcome to the Merced County labor market review. The Quick Look has been developed by the Department of Workforce Investment staff for the Merced County Local Workforce Investment Board. The data and information is provided by the California Employment Development Department. Questions can be referred to the Department of Workforce Investment, 1880 West Wardrobe Avenue, Merced, CA 95340. Telephone (209) 724-2042. Email: pitd26@co.merced.ca.us

Merced County	Labor Force and Industrial Employment					
	March 2003 Benchmark					
	Aug 03	Jun 04	Jul 04	Aug 04	Percent	Change
Data not adjusted for Seasonality			Revised	Prelim.	Month	Year
Civilian Labor Force (1)	91,900	95,600	92,700	94,500	1.9%	2.8%
Civilian Employment	81,400	82,100	80,100	84,300	5.2%	3.6%
Civilian Unemployment	10,500	13,500	12,600	10,200	-19.0%	-2.9%
Civilian Unemployment Rate	11.4%	14.1%	13.6%	10.8%		
(CA Unemployment Rate)	6.7%	6.4%	6.6%	5.7%		
(U.S. Unemployment Rate)	6.0%	5.8%	5.7%	5.4%		
Total, All Industries (2)	70,400	70,900	68,600	71,800	4.7%	2.0%
Total Farm	13,000	12,200	13,100	13,300	1.5%	2.3%
Total Nonfarm	57,400	58,700	55,500	58,500	5.4%	1.9%
Total Private	44,700	44,700	45,000	46,100	2.4%	3.1%
Goods Producing	15,600	15,100	15,400	16,000	3.9%	2.6%
Natural Resources, Mining and Construction	3,200	3,500	3,500	3,500	0.0%	9.4%
Manufacturing	12,400	11,600	11,900	12,500	5.0%	0.8%
Durable Goods	1,700	1,800	1,700	1,700	0.0%	0.0%
Nondurable Goods	10,700	9,800	10,200	10,800	5.9%	0.9%
Food Man & Beverage & Tobacco	8,900	8,000	8,300	9,200	10.8%	3.4%
Residual-Textile Mills	1,800	1,800	1,900	1,900	0.0%	5.6%
Service Providing	41,800	43,600	40,100	42,500	6.0%	1.7%
Trade, Transportation and Utilities	11,600	11,800	11,900	12,100	1.7%	4.3%
Wholesale Trade	1,800	1,900	1,900	1,900	0.0%	5.6%
Retail Trade	7,300	7,500	7,600	7,600	0.0%	4.1%
Food and Beverage Stores	1,600	1,600	1,600	1,600	0.0%	0.0%
General Merchandise Stores	1,700	1,700	1,800	1,800	0.0%	5.9%
Residual-Miscellaneous Store Retailers	4,000	4,200	4,200	4,200	0.0%	5.0%
Transportation, Warehousing and Utilities	2,500	2,400	2,400	2,600	8.3%	4.0%
Information	500	500	500	500	0.0%	0.0%
Financial Activities	1,700	1,600	1,600	1,600	0.0%	-5.9%
Finance and Insurance	1,000	1,000	1,000	1,000	0.0%	0.0%
Real Estate and Rental and Leasing	700	600	600	600	0.0%	-14.3%
Educational and Health Services	3,400	3,300	3,400	3,500	2.9%	2.9%
Leisure and Hospitality	5,500	5,600	5,600	5,700	1.8%	3.6%
Food Services and Drinking Places	4,700	4,900	4,800	4,900	2.1%	4.3%
Residual-Arts, Entertainment, and Recreation	3,800	3,900	3,800	3,900	2.6%	2.6%
Other Services	900	1,000	1,000	1,000	0.0%	11.1%
Government	1,700	1,900	1,800	1,800	0.0%	5.9%
Federal Government	12,700	14,000	10,500	12,400	18.1%	-2.4%
State and Local Government	800	800	800	800	0.0%	0.0%
State Government	11,900	13,200	9,700	11,600	19.6%	-2.5%
Educational and Health Services	600	600	600	600	0.0%	0.0%

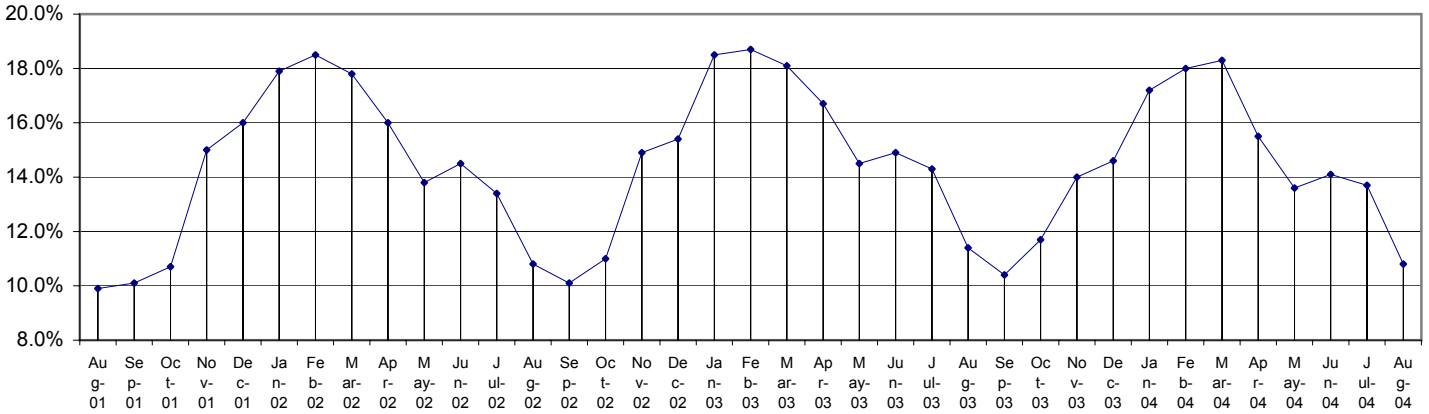
The County continues with one of the highest unemployment rates in the State, ranking 53rd out of 58 counties in the Month of August. The preliminary result is a decrease of 2.9 percentage points in the unemployment rate from the revised July rate. This preliminary figure is a decrease of 0.6 percentage point in the unemployment rate of one year ago.

Overall, the County saw an increase of 3,200 jobs in August following a 2,300 job decrease in July. The increase was a result of Total Farm with a 200 job gain, and Total NonFarm industries with an increase of 3,000 jobs. The Goods Producing industries increased by 600 jobs and the Service Providing industries increased by 2,400 jobs.

The Quick Look

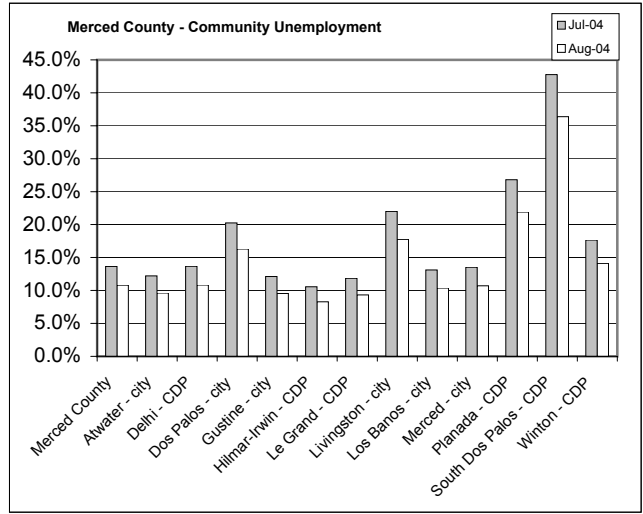
A Merced County Labor Market Review - August 2004

Unemployment Rate Historical Trend



Sub County average unemployment rates for the county, cities, and municipalities.

Area Name	Labor Force	Employment	Unemployment	
			Number	Rate
Merced County	94,500	84,300	10,200	10.8%
Atwater - city	11,150	10,080	1,070	9.6%
Winton - CDP	1,730	1,540	190	10.8%
Dos Palos - city	2,120	1,770	350	16.3%
Gustine - city	2,100	1,900	200	9.6%
Hilmar-Irwin - CDP	1,960	1,800	160	8.3%
Le Grand - CDP	570	520	50	9.3%
Livingston - city	4,320	3,550	770	17.7%
Los Banos - city	8,070	7,230	840	10.4%
Merced - city	28,720	25,650	3,070	10.7%
Planada - CDP	1,870	1,460	410	21.9%
South Dos Palos - CDP	550	350	200	36.4%
Winton - CDP	3,740	3,210	530	14.1%



QuickLook at the Seven Counties: Merced County's workforce has grown over the past 20 years reflecting improvement of the County's economic well being; however, unemployment remains a consistent barrier to greater prosperity. Average Unemployment has fluctuated from a yearly low of 12.8 percent to a yearly high of 17.3 percent in 1992. Between the years 1990 to 2003 Merced County's average unemployment was 15.2 percent

The County's unemployment rate is the sixth highest in the state. Merced County saw a decrease in the unemployment rate of 2.9 percentage point below July's unemployment rate. All seven counties' unemployment rate decreased in month-over average unemployment (Merced, Fresno, Madera, Stanislaus, San Benito, Mariposa, and San Joaquin).

County	Rank	Labor Force	Employ	Unemploy	Rate
Merced	53	94,500	84,300	10,200	10.8%
Madera	46	58,800	53,600	5,100	8.8%
Mariposa	16	8,400	8,010	390	4.7%
Fresno	51	410,000	367,900	42,100	10.3%
San Benito	39	30,550	28,400	2,160	7.1%
San Joaquin	44	286,900	262,400	24,500	8.5%
Stanislaus	45	227,200	207,500	19,700	8.7%

