



# The Quick Look

## A Merced County Labor Market Review - September 2007

Welcome to the Merced County labor market review. The Quick Look has been developed by the Department of Workforce Investment staff for the Merced County Local Workforce Investment Board. The data and information is provided by the California Employment Development Department. Questions can be referred to EDD's Labor Market Information Division at (916) 262-2162.

Merced County Data not adjusted for Seasonality	Labor Force and Industrial Employment					
	March 2006 Benchmark				Percent Change	
	Sep 06	Jul 07	Aug 07	Sep 07	Month	Year
Civilian Labor Force	101,500	100,900	103,100	102,600	-0.5%	1.1%
Civilian Employment	94,300	91,000	94,100	94,000	-0.1%	-0.3%
Civilian Unemployment	7,200	9,900	9,000	8,600	-4.4%	19.4%
Civilian Unemployment Rate	7.1%	9.8%	8.7%	8.4%		
(CA Unemployment Rate)	4.6%	5.5%	5.4%	5.4%		
(U.S. Unemployment Rate)	4.4%	4.9%	4.6%	4.5%		
Total, All Industries	73,800	71,700	72,700	73,600	1.2%	-0.3%
Total Farm	13,700	12,900	12,700	13,100	3.1%	-4.4%
Total Nonfarm	60,100	58,800	60,000	60,500	0.8%	0.7%
Total Private	45,400	45,200	45,300	45,400	0.2%	0.0%
Goods Producing	14,600	14,300	14,400	14,500	0.7%	-0.7%
Natural Resources and Mining and Constuction	3,600	3,300	3,300	3,300	0.0%	-8.3%
Construction	3,600	3,300	3,300	3,300	0.0%	-8.3%
Manufacturing	11,000	11,000	11,100	11,200	0.9%	1.8%
Durable Goods	1,900	2,000	2,000	2,000	0.0%	5.3%
Nondurable Goods	9,100	9,000	9,100	9,200	1.1%	1.1%
Service Providing	45,500	44,500	45,600	46,000	0.9%	1.1%
Private Service Producing	30,800	30,900	30,900	30,900	0.0%	0.3%
Trade, Transportation and Utilities	11,300	11,100	11,100	11,100	0.0%	-1.8%
Wholesale Trade	1,700	1,700	1,700	1,700	0.0%	0.0%
Retail Trade	7,400	7,200	7,200	7,200	0.0%	-2.7%
Food and Beverage Stores	1,500	1,500	1,500	1,500	0.0%	0.0%
General Merchandise Stores	1,700	1,600	1,600	1,600	0.0%	-5.9%
Residual - Miscellaneous Store Retailers	4,200	4,100	4,100	4,100	0.0%	-2.4%
Transportation, Warehousing and Utilities	2,200	2,200	2,200	2,200	0.0%	0.0%
Information	1,400	1,400	1,400	1,400	0.0%	0.0%
Financial Activities	1,900	2,100	2,100	2,100	0.0%	10.5%
Finance and Insurance	1,200	1,300	1,300	1,300	0.0%	8.3%
Real Estate and Rental and Leasing	700	800	800	800	0.0%	14.3%
Professional and Business Services	3,900	3,900	3,900	3,900	0.0%	0.0%
Educational and Health Services	5,800	5,900	5,900	5,900	0.0%	1.7%
Leisure and Hospitality	4,900	4,900	4,900	4,900	0.0%	0.0%
Food Services and Drinking Places	4,100	4,200	4,200	4,200	0.0%	2.4%
Residual - Arts, Entertainment, and Recreation	800	700	700	700	0.0%	-12.5%
Other Services	1,600	1,600	1,600	1,600	0.0%	0.0%
Government	14,700	13,600	14,700	15,100	2.7%	2.7%
Federal Government	700	800	800	800	0.0%	14.3%
State Government	1,600	1,700	1,700	1,800	5.9%	12.5%
Local Government	12,400	11,100	12,200	12,500	2.5%	0.8%

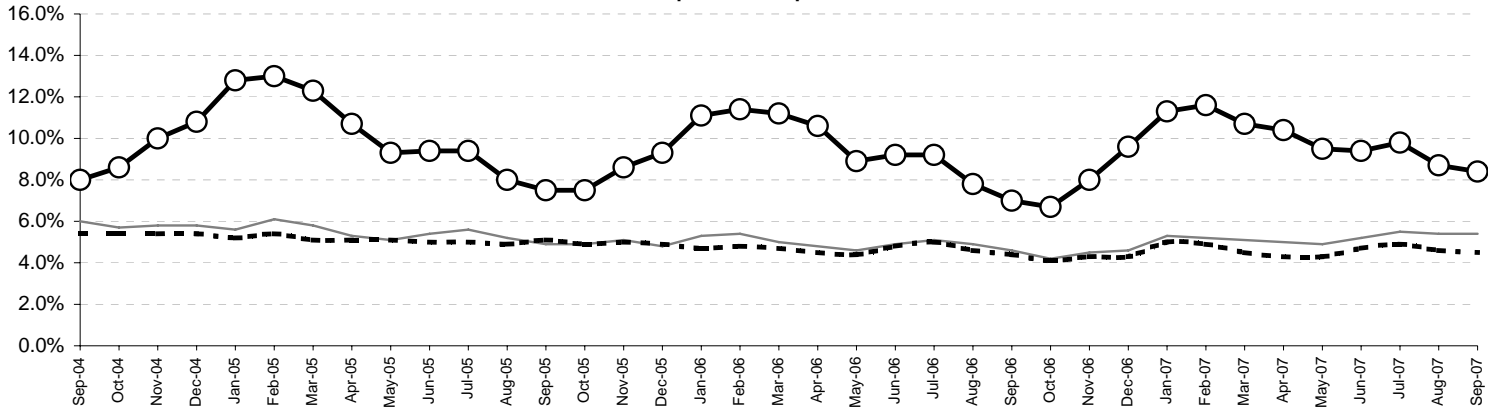
The County continues with one of the highest unemployment rates in the State, ranking 55th out of 58 counties in the month of September. The preliminary result is a decrease of .3 percentage point in the unemployment rate from the September rate. For year ago data, this preliminary figure is an increase of 1.3 percentage point in the unemployment rate.

Overall, the County's Civilian Labor Force decreased by 500 persons over last month's figure and an increase of 1100 persons over year ago figure. Industrial employment increased by 900 jobs in September over August's figure and an decreased of 200 jobs over year ago figures.

## The Quick Look

Sep 2007

Merced County, California, and the United States  
Unemployment Rate  
Sep 2004 to Sep 2007

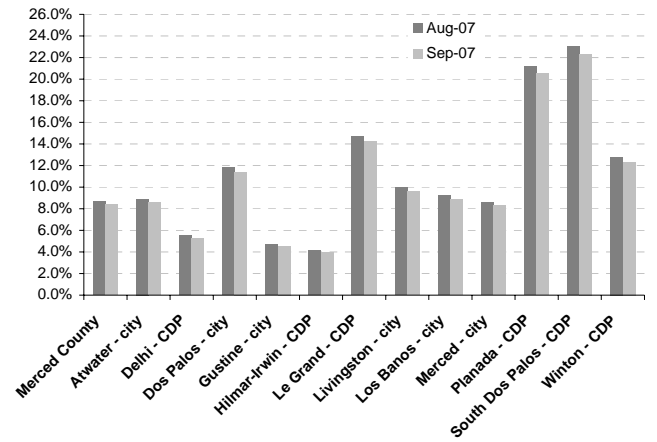


### Sub County average unemployment rates for the county, cities, and municipalities.

Area Name	Labor Force	Employment	Unemployment	
			Number	Rate
Merced County	102,600	94,100	8,600	8.4%
Atwater City	12,000	11,000	1,000	8.6%
Delhi CDP	4,000	3,800	200	5.2%
Dos Palos City	1,900	1,700	200	11.4%
Gustine City	2,500	2,400	100	4.5%
Hilmar-Irwin CDP	2,800	2,700	100	3.9%
Le Grand CDP	700	600	100	14.2%
Livingston City	5,000	4,500	500	9.6%
Los Banos City	12,700	11,700	1,100	8.9%
Merced City	30,400	27,900	2,500	8.3%
Planada CDP	1,600	1,300	300	20.5%
South Dos Palos CDP	400	300	100	22.3%
Winton CDP	3,800	3,300	500	12.3%

CDP - Census Designated Place

### Merced County - Community Unemployment



Merced County's workforce has grown over the past 16 years reflecting improvement of the County's economic well being; however, unemployment remains a consistent barrier to greater prosperity. Average unemployment has fluctuated from an annual low of 9.3 percent to an annual high of 17.5 percent.

### Counties in the San Joaquin Valley Quick Look

County	Rank	Labor Force	Employ	Unemployed	Rate
Merced	55	102,600	94,000	8,600	8.4%
Fresno	47	429,100	396,800	32,300	7.5%
Kern	47	352,200	325,900	26,300	7.5%
Kings	44	58,100	53,800	4,300	7.3%
Madera	34	68,700	64,500	4,200	6.1%
San Joaquin	49	292,800	269,900	22,900	7.8%
Stanislaus	52	233,200	214,600	18,600	8.0%
Tulare	53	195,000	179,000	16,000	8.2%
San Joaquin Valley		1,731,700	1,598,500	133,200	7.7%

### Counties in the San Joaquin Valley Unemployment Rates

