



The Quick Look

A Merced County Labor Market Review - August 2005

Welcome to the Merced County labor market review. The Quick Look has been developed by the Department of Workforce Investment staff for the Merced County Local Workforce Investment Board. The data and information is provided by the California Employment Development Department. Questions can be referred to the Department of Workforce Investment, 1880 West Wardrobe Avenue, Merced, CA 95340. Telephone (209) 724-2042. Email: pitd26@co.merced.ca.us

Merced County Data not adjusted for Seasonality	Labor Force and Industrial Employment					
	March 2004 Benchmark				Percent Change	
	Aug 04	Jun 05	Jul 05 Revised	Aug 05 Prelim.	Month	Year
Civilian Labor Force	99,400	101,500	99,700	102,400	2.7%	3.0%
Civilian Employment	90,800	92,100	90,600	94,000	3.8%	3.5%
Civilian Unemployment	8,600	9,500	9,100	8,400	-7.7%	-2.3%
Civilian Unemployment Rate	8.6%	9.3%	9.1%	8.2%		
(CA Unemployment Rate)	5.9%	5.4%	5.4%	5.1%		
(U.S. Unemployment Rate)	5.4%	5.2%	5.2%	4.9%		
Total, All Industries	69,000	70,400	68,000	70,500	3.7%	2.2%
Total Farm	11,700	11,300	11,700	12,100	3.4%	3.4%
Total Nonfarm	57,300	59,100	56,300	58,400	3.7%	1.9%
Total Private	45,000	44,900	45,400	45,700	0.7%	1.6%
Goods Producing	15,700	15,600	16,500	16,800	1.8%	7.0%
Natural Resources and Mining	0	100	100	100	0.0%	
Construction	3,500	3,900	4,000	4,000	0.0%	14.3%
Manufacturing	12,200	11,600	12,400	12,700	2.4%	4.1%
Durable Goods	1,700	1,600	1,600	1,600	0.0%	-5.9%
Nondurable Goods	10,500	10,000	10,800	11,100	2.8%	5.7%
Food Man & Beverage & Tobacco	8,800	8,500	9,300	9,500	2.2%	8.0%
Residual - Textile Mills	1,700	1,500	1,500	1,600	-6.7%	5.9%
Service Providing	41,600	43,500	39,800	41,600	4.5%	0.0%
Private Service Producing	29,300	29,300	28,900	28,900	0.0%	-1.4%
Trade, Transportation and Utilities	11,000	11,000	11,000	11,000	0.0%	0.0%
Wholesale Trade	1,500	1,400	1,400	1,400	0.0%	-6.7%
Retail Trade	7,600	7,700	7,700	7,700	0.0%	1.3%
Food and Beverage Stores	1,500	1,500	1,500	1,500	0.0%	0.0%
General Merchandise Stores	1,600	1,700	1,800	1,800	0.0%	12.5%
Residual - Miscellaneous Store Retailers	4,500	4,500	4,400	4,400	0.0%	-2.2%
Transportation, Warehousing and Utilities	1,900	1,900	1,900	1,900	0.0%	0.0%
Information	1,400	1,300	1,300	1,300	0.0%	-7.1%
Financial Activities	1,800	1,700	1,700	1,700	0.0%	-5.6%
Finance and Insurance	1,100	1,000	1,000	1,000	0.0%	-9.1%
Real Estate and Rental and Leasing	700	700	700	700	0.0%	0.0%
Professional and Business Services	3,500	3,400	3,300	3,300	0.0%	-5.7%
Educational and Health Services	5,300	5,400	5,300	5,300	0.0%	0.0%
Leisure and Hospitality	4,700	4,900	4,700	4,700	0.0%	0.0%
Food Services and Drinking Places	4,000	4,100	3,900	3,900	0.0%	-2.5%
Residual - Arts, Entertainment, and Recreation	700	800	800	800	0.0%	14.3%
Other Services	1,600	1,600	1,600	1,600	0.0%	0.0%
Government	12,300	14,200	10,900	12,700	16.5%	3.3%
Federal Government	800	800	800	800	0.0%	0.0%
State Government	500	700	800	900	12.5%	80.0%
Local Government	11,000	12,700	9,300	11,000	18.3%	0.0%

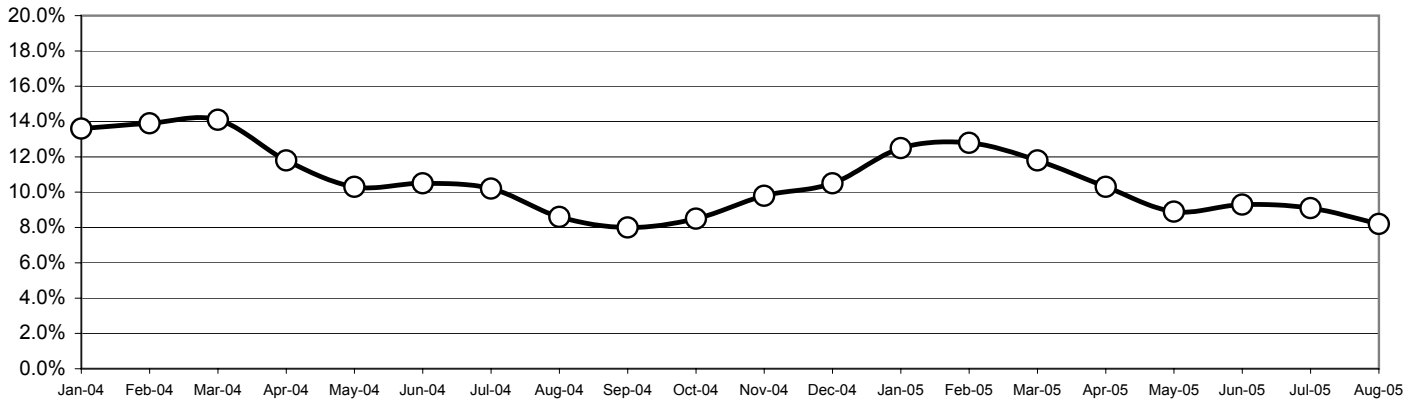
The County continues with one of the highest unemployment rates in the State, ranking 54th out of 58 counties in the Month of August. The preliminary result is a decrease of 0.9 percentage point in the unemployment rate from the revised July rate. This preliminary figure is a decrease of 0.4 percentage point from the unemployment rate of one year ago.

Overall, the County's Civilian Labor Force increased by 2,700 persons over last month's figure and an increase over year ago figures. Industrial employment increased by 2,500 jobs in August over July's figures and showed an increase of 1,500 over year ago figures.

The Quick Look

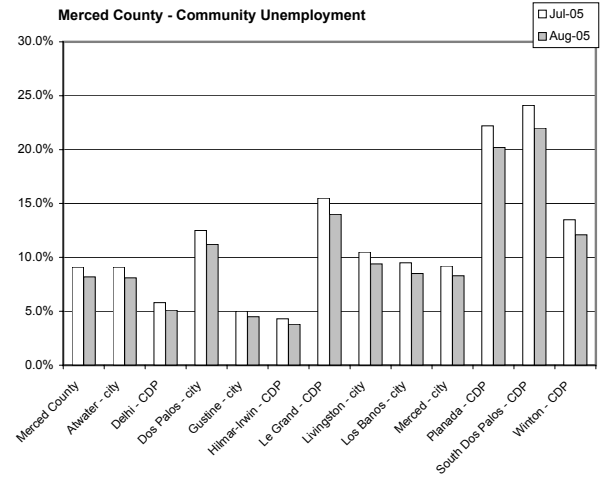
A Merced County Labor Market Review - August 2005

**Merced County Unemployment Rate
2004 - 2005**



Sub County average unemployment rates for the county, cities, and municipalities.

Area Name	Labor Force	Employment	Unemployment	
			Number	Rate
Merced County	102,400	94,000	8,400	8.2%
Atwater City	12,100	11,100	1,000	8.1%
Delhi CDP	4,000	3,800	200	5.1%
Dos Palos City	1,900	1,700	200	11.2%
Gustine City	2,500	2,400	100	4.5%
Hilmar-Irwin CDP	2,800	2,700	100	3.8%
Le Grand CDP	700	600	100	14.0%
Livingston City	5,000	4,500	500	9.4%
Los Banos City	12,700	11,600	1,100	8.5%
Merced City	30,300	27,800	2,500	8.3%
Planada CDP	1,600	1,300	300	20.2%
South Dos Palos CDP	400	300	100	22.0%
Winton CDP	3,800	3,300	500	12.1%



CDP - Census Designated Place

Merced County's workforce has grown over the past 15 years reflecting improvement of the County's economic well being; however, unemployment remains a consistent barrier to greater prosperity. Average unemployment has fluctuated from an annual low of 9.6 percent to an annual high of 17.5 percent.

The County's unemployment rate is the fifth highest in the state. Merced County saw a decrease in the unemployment rate of 0.9 percentage point from July's revised unemployment rate. All seven counties saw decreases in their unemployment rate, ranging from a high of 0.9 percentage point to a low of 0.3 percentage point..

Seven County Quick Look

County	Rank	Labor Force	Employ	Unemployed	Rate
Merced	54	102,400	94,000	8,400	8.2%
Madera	38	67,900	63,700	4,300	6.3%
Mariposa	14	9,440	8,980	460	4.8%
Fresno	48	426,900	394,900	32,000	7.5%
San Benito	34	25,100	23,600	1,400	5.7%
San Joaquin	43	293,500	273,200	20,300	6.9%
Stanislaus	44	240,400	223,600	16,800	7.0%

Seven County Unemployment Rate

