



The Quick Look

A Merced County Labor Market Review - December 2004

Welcome to the Merced County labor market review. The Quick Look has been developed by the Department of Workforce Investment staff for the Merced County Local Workforce Investment Board. The data and information is provided by the California Employment Development Department. Questions can be referred to the Department of Workforce Investment, 1880 West Wardrobe Avenue, Merced, CA 95340. Telephone (209) 724-2042. Email: pitd26@co.merced.ca.us

Labor Force and Industrial Employment						
Merced County	March 2003 Benchmark					
Data not adjusted for Seasonality	Dec 03	Oct 04	Nov 04	Dec 04	Percent	Change
			Revised	Prelim.	Month	Year
Civilian Labor Force (1)	90,000	93,600	93,700	92,800	-1.0%	3.1%
Civilian Employment	76,800	83,100	81,600	80,000	-2.0%	4.2%
Civilian Unemployment	13,200	10,400	12,100	12,800	5.8%	-3.0%
Civilian Unemployment Rate	14.6%	11.2%	12.9%	13.8%		
(CA Unemployment Rate)	6.2%	5.7%	5.7%	5.4%		
(U.S. Unemployment Rate)	5.4%	5.1%	5.2%	5.1%		
Total, All Industries	65,700	71,000	69,200	67,800	-2.0%	3.2%
Total Farm	9,000	12,500	10,500	9,100	-13.3%	1.1%
Total Nonfarm	56,700	58,500	58,700	58,700	0.0%	3.5%
Total Private	43,200	45,400	45,100	45,000	-0.2%	4.2%
Goods Producing	14,300	15,600	15,400	15,400	0.0%	7.7%
Natural Resources, Mining and Construction	3,200	3,600	3,500	3,700	5.7%	15.6%
Manufacturing	11,100	12,000	11,900	11,700	-1.7%	5.4%
Durable Goods	1,600	1,600	1,700	1,800	5.9%	12.5%
Nondurable Goods	9,500	10,400	10,200	9,900	-2.9%	4.2%
Food Man & Beverage & Tobacco	7,600	8,600	8,300	8,000	-3.6%	5.3%
Residual-Textile Mills	1,900	1,800	1,900	1,900	0.0%	0.0%
Service Providing	42,400	42,900	43,300	43,300	0.0%	2.1%
Trade, Transportation and Utilities	11,900	12,300	12,300	12,200	-0.8%	2.5%
Wholesale Trade	1,700	1,900	1,800	1,600	-11.1%	-5.9%
Retail Trade	7,800	7,800	8,000	8,100	1.3%	3.8%
Food and Beverage Stores	1,600	1,600	1,600	1,600	0.0%	0.0%
General Merchandise Stores	1,800	1,900	2,100	2,200	4.8%	22.2%
Residual-Miscellaneous Store Retailers	4,400	4,300	4,300	4,300	0.0%	-2.3%
Transportation, Warehousing and Utilities	2,400	2,600	2,500	2,500	0.0%	4.2%
Information	500	500	500	500	0.0%	0.0%
Financial Activities	1,600	1,600	1,600	1,600	0.0%	0.0%
Finance and Insurance	1,000	1,000	1,000	1,000	0.0%	0.0%
Real Estate and Rental and Leasing	600	600	600	600	0.0%	0.0%
Professional and Business Services	3,100	3,400	3,400	3,400	0.0%	9.7%
Educational and Health Services	5,600	5,500	5,400	5,400	0.0%	-3.6%
Leisure and Hospitality	4,500	4,700	4,700	4,700	0.0%	4.4%
Food Service and Drinking Places	3,700	3,800	3,800	3,800	0.0%	2.7%
Residual-Arts, Entertainment, and Recreation	800	900	900	900	0.0%	12.5%
Other Services	1,700	1,800	1,800	1,800	0.0%	5.9%
Government	13,500	13,100	13,600	13,700	0.7%	1.5%
Federal Government	800	800	800	800	0.0%	0.0%
State and Local Government	12,700	12,300	12,800	12,900	0.8%	1.6%
State Government	600	600	500	500	0.0%	-16.7%
Local Government	12,100	11,700	12,300	12,400	0.8%	2.5%

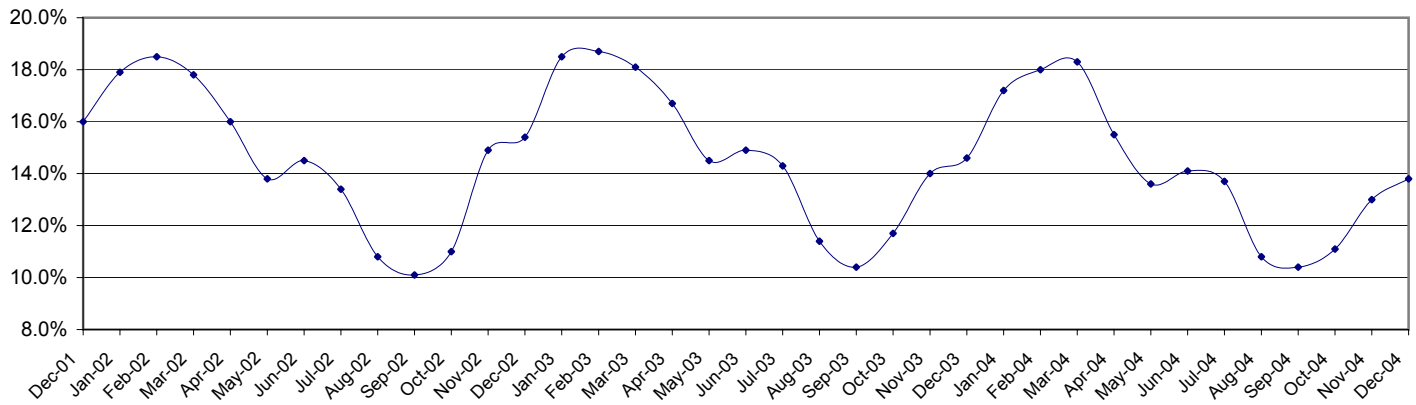
The County continues with one of the highest unemployment rates in the State, ranking 54th out of 58 counties in the Month of November. The preliminary result is an increase of 0.8 percentage point in the unemployment rate from the revised November rate. This preliminary figure is a decrease of 0.8 percentage point from the unemployment rate of one year ago.

Overall, the County's Labor Force decreased by 900 persons over last month's figure. Industrial employment decrease by 1,400 jobs in December over November's figures.

The Quick Look

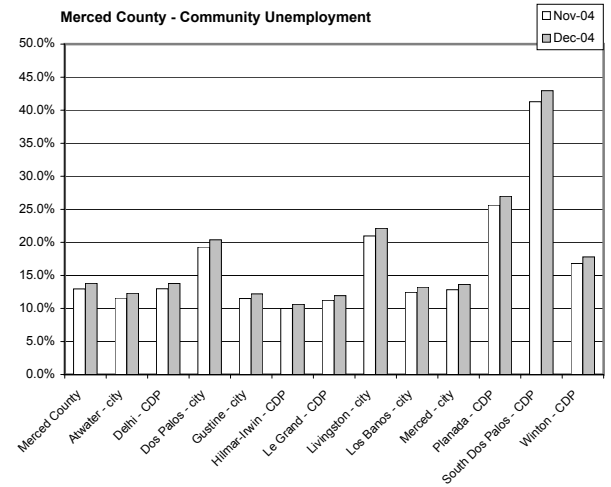
A Merced County Labor Market Review - December 2004

**Merced County Unemployment Rate
Historical Trend**



Sub County average unemployment rates for the county, cities, and municipalities.

Area Name	Labor Force	Employment	Unemployment	
			Number	Rate
Merced County	92,800	80,000	12,800	13.8%
Atwater - city	10,900	9,560	1,340	12.3%
Delhi - CDP	1,690	1,460	230	13.8%
Dos Palos - city	2,110	1,680	430	20.4%
Gustine - city	2,060	1,810	250	12.2%
Hilmar-Irwin - CDP	1,900	1,700	200	10.6%
Le Grand - CDP	560	490	70	11.9%
Livingston - city	4,330	3,370	960	22.1%
Los Banos - city	7,900	6,860	1,040	13.2%
Merced - city	28,180	24,340	3,840	13.6%
Planada - CDP	1,900	1,390	510	27.0%
South Dos Palos - CDP	580	330	250	43.0%
Winton - CDP	3,700	3,040	660	17.8%



QuickLook at the Seven Counties: Merced County's workforce has grown over the past 20 years reflecting improvement of the County's economic well being; however, unemployment remains a consistent barrier to greater prosperity. Average Unemployment has fluctuated from a yearly low of 12.8 percent to a yearly high of 17.3 percent in 1992. Between the years 1990 to 2003 Merced County's average unemployment was 15.2 percent.

The County's unemployment rate is the fifth highest in the state. Merced County saw an increase in the unemployment rate of 0.8 percentage point above November's revised unemployment rate. Three counties (Merced, Mariposa, and San Benito) saw increases in their unemployment rate. Three counties (Madera, San Joaquin, and Stanislaus) unemployment rate remain stable. Fresno county unemployment rate saw a decrease.

Seven County Quick Look

County	Rank	Labor Force	Employ	Unemploy	Rate
Merced	54	92,800	80,000	12,800	13.8%
Madera	44	56,400	50,200	6,200	11.0%
Mariposa	37	6,970	6,390	590	8.4%
Fresno	49	393,100	344,400	48,700	12.4%
San Benito	39	28,310	25,870	2,440	8.6%
San Joaquin	41	283,600	257,000	26,600	9.4%
Stanislaus	42	215,800	193,100	22,800	10.5%

Seven County Unemployment Rate

