



The Quick Look

A Merced County Labor Market Review - May 2009

Welcome to the Merced County labor market review. The Quick Look has been developed by the Department of Workforce Investment staff for the Merced County Local Workforce Investment Board. The data and information is provided by the California Employment Development Department. Questions can be referred to the Department of Workforce Investment, 1880 West Wardrobe Avenue, Merced, CA 95341. Telephone (209) 724-2055. Email: pitd131@co.merced.ca.us or to EDD's Labor Market Information Division at (916) 262-2162.

Merced County Data not adjusted for Seasonality	Labor Force and Industrial Employment					
	March 2006 Benchmark				Percent Change	
	May 08	Mar 09	Apr 09	May 09	Month	Year
Civilian Labor Force	102,100	107,800	106,600	105,800	-0.8%	3.6%
Civilian Employment	90,200	86,000	87,300	87,500	0.2%	-3.0%
Civilian Unemployment	11,900	21,800	19,300	18,300	-5.2%	53.8%
Civilian Unemployment Rate	11.7%	20.2%	18.1%	17.3%		
(CA Unemployment Rate)	6.5%	11.5%	11.0%	11.2%		
(U.S. Unemployment Rate)	5.2%	9.0%	8.6%	9.1%		
Total, All Industries	69,400	64,500	65,800	67,400	2.4%	-2.9%
Total Farm	11,400	8,700	9,500	11,100	16.8%	-2.6%
Total Nonfarm	58,000	55,800	56,300	56,300	0.0%	-2.9%
Total Private	42,000	40,000	40,300	40,300	0.0%	-4.0%
Goods Producing	11,800	10,500	10,800	10,900	0.9%	-7.6%
Natural Resources and Mining and Constuction	2,500	1,900	1,900	1,900	0.0%	-24.0%
Construction	2,500	1,900	1,900	1,900	0.0%	-24.0%
Manufacturing	9,300	8,600	8,900	9,000	1.1%	-3.2%
Durable Goods	1,900	1,700	1,700	1,700	0.0%	-10.5%
Nondurable Goods	7,400	6,900	7,200	7,300	1.4%	-1.4%
Service Providing	46,200	45,300	45,500	45,400	-0.2%	-1.7%
Private Service Producing	30,200	29,500	29,500	29,400	-0.3%	-2.6%
Trade, Transportation and Utilities	11,200	11,000	11,000	10,900	-0.9%	-2.7%
Wholesale Trade	1,700	1,700	1,700	1,600	-5.9%	-5.9%
Retail Trade	7,300	7,000	7,000	7,000	0.0%	-4.1%
Food and Beverage Stores	1,600	1,600	1,600	1,600	0.0%	0.0%
General Merchandise Stores	1,700	1,800	1,800	1,800	0.0%	5.9%
Residual - Miscellaneous Store Retailers	4,000	3,600	3,600	3,600	0.0%	-10.0%
Transportation, Warehousing and Utilities	2,200	2,300	2,300	2,300	0.0%	4.5%
Information	1,300	1,200	1,200	1,200	0.0%	-7.7%
Financial Activities	1,700	1,700	1,700	1,700	0.0%	0.0%
Finance and Insurance	1,100	1,100	1,100	1,100	0.0%	0.0%
Real Estate and Rental and Leasing	600	600	600	600	0.0%	0.0%
Professional and Business Services	3,900	4,000	4,000	4,000	0.0%	2.6%
Educational and Health Services	5,500	5,500	5,500	5,500	0.0%	0.0%
Leisure and Hospitality	5,100	4,700	4,700	4,700	0.0%	-7.8%
Food Services and Drinking Places	4,400	4,100	4,100	4,100	0.0%	-6.8%
Residual - Arts, Entertainment, and Recreation	700	600	600	600	0.0%	-14.3%
Other Services	1,500	1,400	1,400	1,400	0.0%	-6.7%
Government	16,000	15,800	16,000	16,000	0.0%	0.0%
Federal Government	800	800	900	800	-11.1%	0.0%
State Government	1,600	1,600	1,600	1,600	0.0%	0.0%
Local Government	13,600	13,400	13,500	13,600	0.7%	0.0%

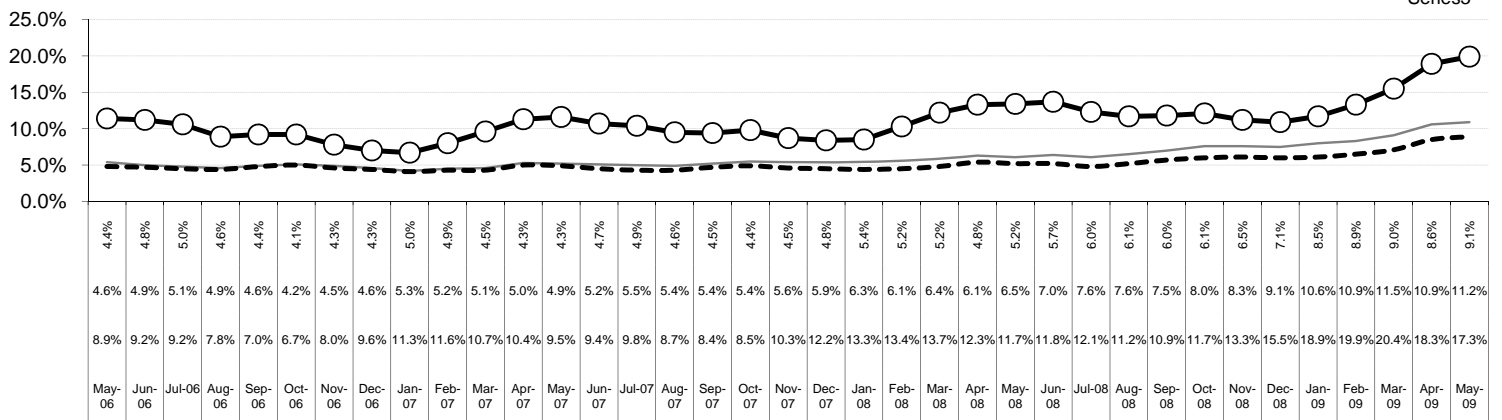
The County continues with one of the highest unemployment rates in the State, ranking 53rd out of 58 counties in the month of May. The preliminary result is an decrease of .8 percentage points in the unemployment rate from the April rate. For year ago data, this preliminary figure is an increase of 5.6 percentage points in the unemployment rate.

Overall, the County's Civilian Labor Force decreased by 800 persons over last month's figure and an increase of 3,700 persons over year ago figure. Industrial employment increased by 1,600 jobs in May over April's figure and an decrease of 2,000 jobs over year ago's figures.

The Quick Look

May 2009

Merced County, California, and the United States Unemployment Rate May 2006 to May 2009

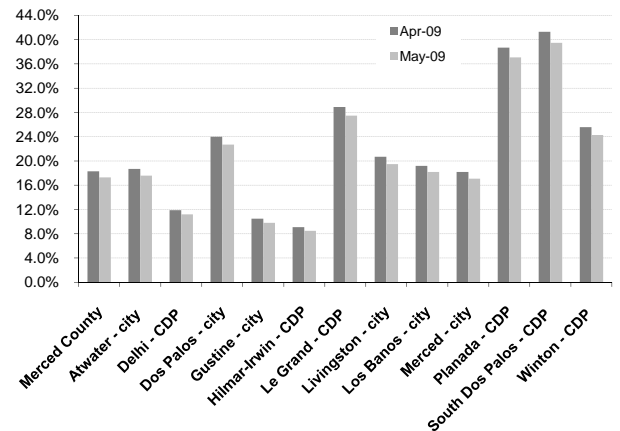


Sub County average unemployment rates for the county, cities, and municipalities.

Area Name	Labor Force	Employment	Unemployment	
			Number	Rate
Merced County	105,800	87,500	18,300	17.3%
Atwater city	12,400	10,200	2,200	17.6%
Delhi CDP	4,000	3,500	400	11.2%
Dos Palos city	2,100	1,600	500	22.7%
Gustine city	2,500	2,200	200	9.8%
Hilmar Irwin CDP	2,700	2,500	200	8.5%
Le Grand CDP	800	600	200	27.5%
Livingston city	5,200	4,200	1,000	19.5%
Los Banos city	13,200	10,800	2,400	18.2%
Merced city	31,300	25,900	5,400	17.1%
Planada CDP	1,900	1,200	700	37.1%
South Dos Palos CDP	500	300	200	39.5%
Winton CDP	4,100	3,100	1,000	24.3%

CDP - Census Designated Place

Merced County - Community Unemployment



Merced County's workforce has grown over the past 16 years reflecting improvement of the County's economic well being; however, unemployment remains a consistent barrier to greater prosperity. Average unemployment has fluctuated from an annual low of 9.3 percent to an annual high of 17.5 percent.

Counties in the San Joaquin Valley Quick Look

County	Rank	Labor Force	Employ	Unemployed	Rate
Merced	53	105,800	87,500	18,300	17.3%
Fresno	47	439,100	371,500	67,700	15.4%
Kern	40	379,500	325,600	53,900	14.2%
Kings	42	61,100	52,300	8,800	14.4%
Madera	37	68,600	59,200	9,400	13.7%
San Joaquin	45	310,100	263,500	46,500	15.0%
Stanislaus	50	240,400	201,200	39,200	16.3%
Tulare	41	216,800	185,800	31,000	14.3%
San Joaquin Valley		1,821,400	1,546,600	274,800	15.1%

Counties in the San Joaquin Valley Unemployment Rates

