



The Quick Look

A Merced County Labor Market Review - September 2009

Welcome to the Merced County labor market review. The Quick Look has been developed by the Department of Workforce Investment staff for the Merced County Local Workforce Investment Board. The data and information is provided by the California Employment Development Department. Questions can be referred to the Department of Workforce Investment, 1880 West Wardrobe Avenue, Merced, CA 95341. Telephone (209) 724-2055. Email: pitd131@co.merced.ca.us or to EDD's Labor Market Information Division at (916) 262-2162.

Merced County Data not adjusted for Seasonality	Labor Force and Industrial Employment					
	March 2006 Benchmark				Percent Change	
	Sep 08	Jul 09	Aug 09	Sep 09	Month	Year
Civilian Labor Force	104,200	104,800	106,300	106,700	0.4%	2.4%
Civilian Employment	92,800	86,400	88,700	89,900	1.4%	-3.1%
Civilian Unemployment	11,400	18,400	17,700	16,700	-5.6%	46.5%
Civilian Unemployment Rate	10.9%	17.6%	16.6%	15.7%		
(CA Unemployment Rate)	7.6%	12.1%	12.2%	12.0%		
(U.S. Unemployment Rate)	6.0%	9.7%	9.6%	9.5%		
Total, All Industries	71,700	65,900	68,200	69,800	2.3%	-2.6%
Total Farm	13,400	12,100	12,800	13,300	3.9%	-0.7%
Total Nonfarm	58,300	53,800	55,400	56,600	2.2%	-2.9%
Total Private	43,100	40,700	40,800	40,800	0.0%	-5.3%
Goods Producing	12,200	11,200	11,300	11,100	-1.8%	-9.0%
Natural Resources and Mining and Constuction	2,200	2,000	2,000	1,900	-5.0%	-13.6%
Construction	2,200	2,000	2,000	1,900	-5.0%	-13.6%
Manufacturing	10,000	9,200	9,300	9,200	-1.1%	-8.0%
Durable Goods	1,800	1,700	1,700	1,700	0.0%	-5.6%
Nondurable Goods	8,200	7,500	7,600	7,500	-1.3%	-8.5%
Service Providing	46,100	42,600	44,100	45,500	3.2%	-1.3%
Private Service Producing	30,900	29,500	29,500	29,700	0.7%	-3.9%
Trade, Transportation and Utilities	11,900	10,800	10,800	11,000	1.9%	-7.6%
Wholesale Trade	1,900	1,600	1,600	1,700	6.3%	-10.5%
Retail Trade	7,600	6,900	6,900	7,000	1.4%	-7.9%
Food and Beverage Stores	1,600	1,600	1,600	1,600	0.0%	0.0%
General Merchandise Stores	2,000	1,800	1,800	1,900	5.6%	-5.0%
Residual - Miscellaneous Store Retailers	4,000	3,500	3,500	3,500	0.0%	-12.5%
Transportation, Warehousing and Utilities	2,400	2,300	2,300	2,300	0.0%	-4.2%
Information	1,200	1,200	1,200	1,200	0.0%	0.0%
Financial Activities	1,700	1,700	1,700	1,700	0.0%	0.0%
Finance and Insurance	1,100	1,100	1,100	1,100	0.0%	0.0%
Real Estate and Rental and Leasing	600	600	600	600	0.0%	0.0%
Professional and Business Services	4,100	4,000	4,000	4,000	0.0%	-2.4%
Educational and Health Services	5,500	5,500	5,500	5,500	0.0%	0.0%
Leisure and Hospitality	5,000	4,900	4,900	4,900	0.0%	-2.0%
Food Services and Drinking Places	1,500	1,400	1,400	1,400	0.0%	-6.7%
Residual - Arts, Entertainment, and Recreation	15,200	13,100	14,600	15,800	8.2%	3.9%
Other Services	800	800	800	800	0.0%	0.0%
Government	14,400	12,300	13,800	15,000	8.7%	4.2%
Federal Government	1,600	1,600	1,600	1,900	18.8%	18.8%
State Government	600	600	600	600	0.0%	0.0%
Local Government	0	0	0	0	0.0%	0.0%

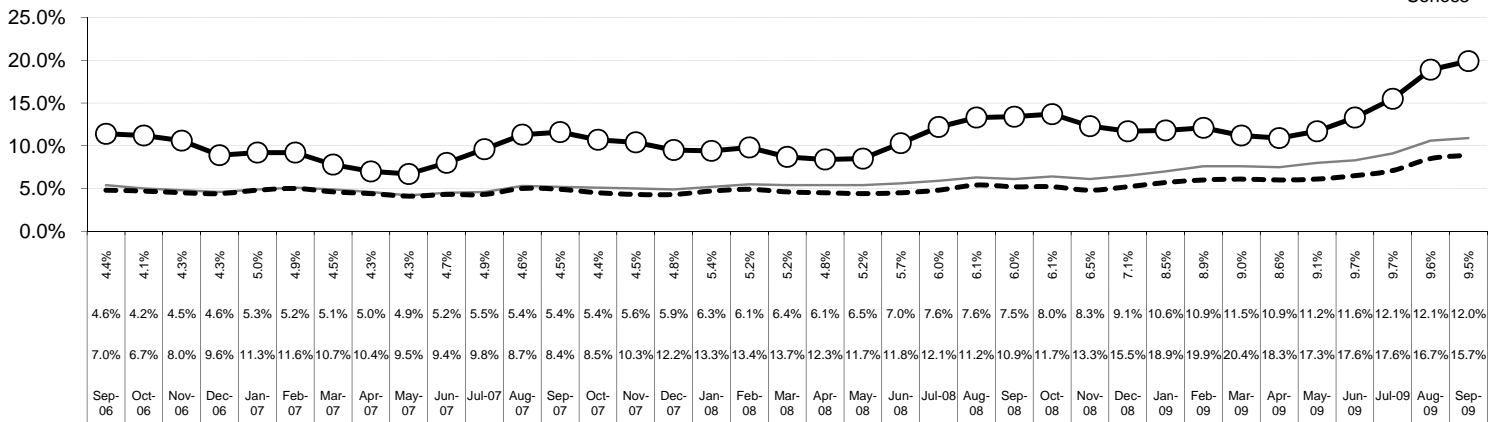
The County continues with one of the highest unemployment rates in the State, ranking 55th out of 58 counties in the month of September. The preliminary result is an decrease of .9 percentage points in the unemployment rate from the August rate. For year ago data, this preliminary figure is an increase of 4.8 percentage points in the unemployment rate.

Overall, the County's Civilian Labor Force increased by 400 persons over last month's figure and an increase of 2,500 persons over year ago figure. Industrial employment increased by 1,600 jobs in September over August's figure and an decrease of 1,900 jobs over year ago's figures.

The Quick Look

Sep 2009

Merced County, California, and the United States Unemployment Rate September 2006 to September 2009

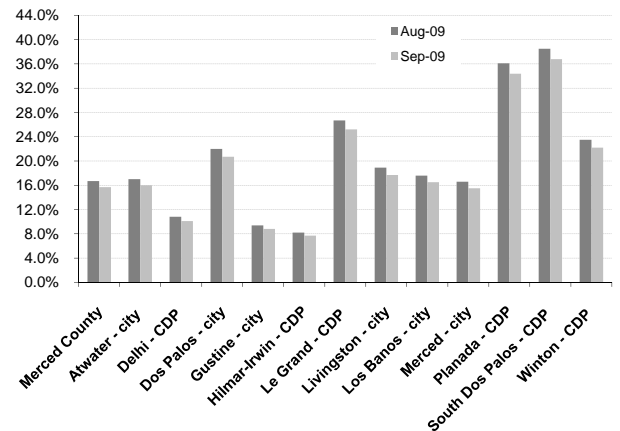


Sub County average unemployment rates for the county, cities, and municipalities.

Area Name	Labor Force	Employment	Unemployment	
			Number	Rate
Merced County	106,700	89,900	16,700	15.7%
Atwater city	12,500	10,500	2,000	16.0%
Delhi CDP	4,000	3,600	400	10.1%
Dos Palos city	2,100	1,600	400	20.7%
Gustine city	2,500	2,300	200	8.8%
Hilmar Irwin CDP	2,800	2,600	200	7.7%
Le Grand CDP	800	600	200	25.2%
Livingston city	5,300	4,300	900	17.7%
Los Banos city	13,300	11,100	2,200	16.5%
Merced city	31,600	26,700	4,900	15.5%
Planada CDP	1,900	1,200	600	34.4%
South Dos Palos CDP	500	300	200	36.8%
Winton CDP	4,100	3,200	900	22.2%

CDP - Census Designated Place

Merced County - Community Unemployment



Merced County's workforce has grown over the past 16 years reflecting improvement of the County's economic well being; however, unemployment remains a consistent barrier to greater prosperity. Average unemployment has fluctuated from an annual low of 9.3 percent to an annual high of 17.5 percent.

Counties in the San Joaquin Valley Quick Look

County	Rank	Labor Force	Employ	Unemployed	Rate
Merced	55	106,700	89,900	16,700	15.7%
Fresno	44	452,200	388,600	63,500	14.1%
Kern	41	377,400	325,100	52,300	13.9%
Kings	41	59,700	51,400	8,300	13.9%
Madera	32	70,400	61,700	8,700	12.3%
San Joaquin	54	304,600	257,400	47,100	15.5%
Stanislaus	53	243,200	206,000	37,200	15.3%
Tulare	50	206,300	175,600	30,700	14.9%
San Joaquin Valley		1,820,500	1,555,700	264,500	14.5%

Counties in the San Joaquin Valley Unemployment Rates

