



# The Quick Look

## A Merced County Labor Market Review - October 2009

Welcome to the Merced County labor market review. The Quick Look has been developed by the Department of Workforce Investment staff for the Merced County Local Workforce Investment Board. The data and information is provided by the California Employment Development Department. Questions can be referred to the Department of Workforce Investment, 1880 West Wardrobe Avenue, Merced, CA 95341. Telephone (209) 724-2055. Email: [pitd131@co.merced.ca.us](mailto:pitd131@co.merced.ca.us) or to EDD's Labor Market Information Division at (916) 262-2162.

Merced County Data not adjusted for Seasonality	Labor Force and Industrial Employment					
	March 2006 Benchmark				Percent Change	
	Oct 08	Aug 09	Sep 09	Oct 09	Month	Year
Civilian Labor Force	105,500	106,300	107,000	107,000	0.0%	1.4%
Civilian Employment	93,300	88,700	90,400	89,400	-1.1%	-4.2%
Civilian Unemployment	12,200	17,700	16,600	17,600	6.0%	44.3%
Civilian Unemployment Rate	11.5%	16.6%	15.5%	16.4%		
(CA Unemployment Rate)	7.9%	12.2%	12.0%	12.3%		
(U.S. Unemployment Rate)	6.1%	9.6%	9.5%	9.5%		
<b>Total, All Industries</b>	<b>71,900</b>	<b>68,200</b>	<b>69,900</b>	<b>69,700</b>	<b>-0.3%</b>	<b>-3.1%</b>
Total Farm	13,400	12,800	13,300	13,000	-2.3%	-3.0%
Total Nonfarm	58,500	55,400	56,800	56,800	0.0%	-2.9%
Total Private	42,900	40,800	41,000	40,900	-0.2%	-4.7%
Goods Producing	12,100	11,300	11,100	11,000	-0.9%	-9.1%
Natural Resources and Mining and Constuction	2,200	2,000	1,900	1,900	0.0%	-13.6%
Construction	2,200	2,000	1,900	1,900	0.0%	-13.6%
Manufacturing	9,900	9,300	9,200	9,100	-1.1%	-8.1%
Durable Goods	1,800	1,700	1,700	1,700	0.0%	-5.6%
Nondurable Goods	8,100	7,600	7,500	7,400	-1.3%	-8.6%
Service Providing	46,400	44,100	45,700	45,800	0.2%	-1.3%
Private Service Producing	30,800	29,500	29,900	29,900	0.0%	-2.9%
Trade, Transportation and Utilities	12,000	10,800	11,100	11,200	0.9%	-6.7%
Wholesale Trade	2,000	1,600	1,700	1,800	5.9%	-10.0%
Retail Trade	7,600	6,900	7,000	7,000	0.0%	-7.9%
Food and Beverage Stores	1,600	1,600	1,600	1,600	0.0%	0.0%
General Merchandise Stores	2,000	1,800	1,900	1,900	0.0%	-5.0%
Residual - Miscellaneous Store Retailers	4,000	3,500	3,500	3,500	0.0%	-12.5%
Transportation, Warehousing and Utilities	2,400	2,300	2,400	2,400	0.0%	0.0%
Information	1,200	1,200	1,200	1,200	0.0%	0.0%
Financial Activities	1,700	1,700	1,700	1,700	0.0%	0.0%
Finance and Insurance	1,100	1,100	1,100	1,100	0.0%	0.0%
Real Estate and Rental and Leasing	600	600	600	600	0.0%	0.0%
Professional and Business Services	4,100	4,000	4,100	4,100	0.0%	0.0%
Educational and Health Services	5,500	5,500	5,500	5,500	0.0%	0.0%
Leisure and Hospitality	4,900	4,900	4,900	4,800	-2.0%	-2.0%
Food Services and Drinking Places	1,400	1,400	1,400	1,400	0.0%	0.0%
Residual - Arts, Entertainment, and Recreation	15,600	14,600	15,800	15,900	0.6%	1.9%
Other Services	800	800	800	800	0.0%	0.0%
Government	14,800	13,800	15,000	15,100	0.7%	2.0%
Federal Government	1,600	1,600	1,900	1,900	0.0%	18.8%
State Government	600	600	600	600	0.0%	0.0%
Local Government	0	0	0	0	0.0%	0.0%

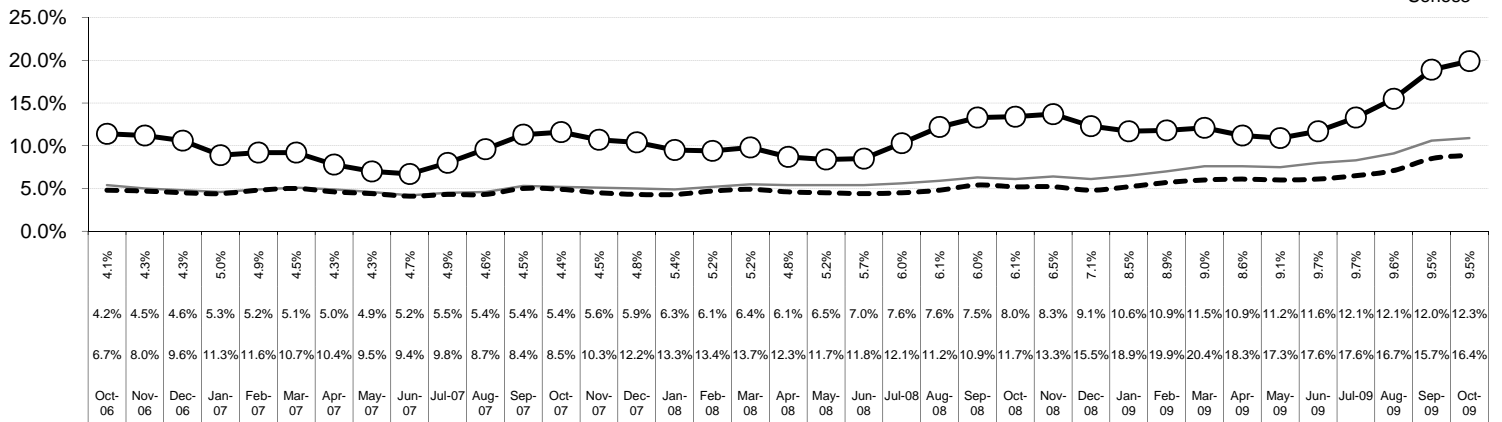
The County continues with one of the highest unemployment rates in the State, ranking 51st out of 58 counties in the month of October. The preliminary result is an increase of .9 percentage points in the unemployment rate from the September rate. For year ago data, this preliminary figure is an increase of 4.9 percentage points in the unemployment rate.

Overall, the County's Civilian Labor Force was unchanged over last month's figure and an increase of 1,500 persons over year ago figure. Industrial employment decreased by 200 jobs in October over September's figure and an decrease of 2,200 jobs over year ago's figures.

## The Quick Look

Oct 2009

### Merced County, California, and the United States Unemployment Rate October 2006 to October 2009

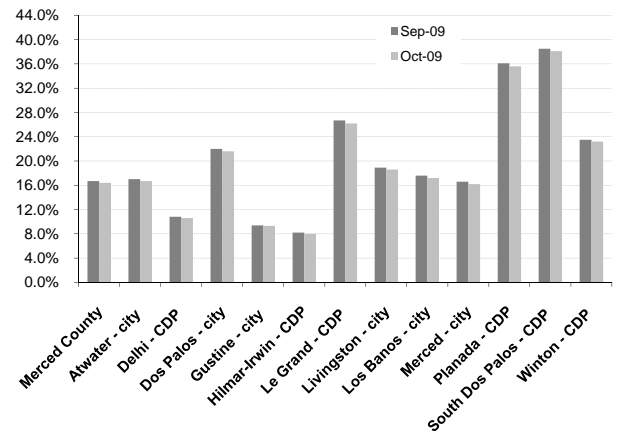


### Sub County average unemployment rates for the county, cities, and municipalities.

Area Name	Labor Force	Employment	Unemployment	
			Number	Rate
Merced County	107,000	89,400	17,600	16.4%
Atwater city	12,600	10,500	2,100	16.7%
Delhi CDP	4,000	3,600	400	10.6%
Dos Palos city	2,100	1,600	400	21.6%
Gustine city	2,500	2,300	200	9.3%
Hilmar Irwin CDP	2,800	2,600	200	8.0%
Le Grand CDP	800	600	200	26.2%
Livingston city	5,300	4,300	1,000	18.6%
Los Banos city	13,400	11,100	2,300	17.2%
Merced city	31,700	26,500	5,100	16.2%
Planada CDP	1,900	1,200	700	35.6%
South Dos Palos CDP	500	300	200	38.1%
Winton CDP	4,100	3,200	1,000	23.2%

CDP - Census Designated Place

### Merced County - Community Unemployment



Merced County's workforce has grown over the past 16 years reflecting improvement of the County's economic well being; however, unemployment remains a consistent barrier to greater prosperity. Average unemployment has fluctuated from an annual low of 9.3 percent to an annual high of 17.5 percent.

### Counties in the San Joaquin Valley Quick Look

County	Rank	Labor Force	Employ	Unemployed	Rate
Merced	51	107,000	89,400	17,600	16.4%
Fresno	47	444,900	374,800	70,100	15.8%
Kern	39	377,700	323,100	54,600	14.5%
Kings	46	59,900	50,600	9,300	15.5%
Madera	35	68,000	58,600	9,400	13.8%
San Joaquin	49	304,900	255,700	49,200	16.1%
Stanislaus	52	240,000	200,100	39,800	16.6%
Tulare	48	207,400	174,300	33,000	15.9%
San Joaquin Valley		1,809,800	1,526,600	283,000	15.6%

### Counties in the San Joaquin Valley Unemployment Rates

